

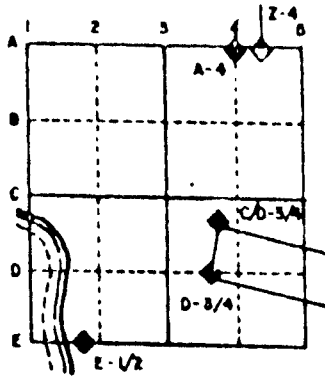
# U.S. PUBLIC LAND SURVEY MONUMENT RECORD

For Public Land Survey Corners in the  
T. 2 N., R. 12 E.  
**CORNER CODE INDEX**

	1	2	3	4	5	6	7	8	9	10	11	12	13	14	15	16	17	18	19	20	21	22	23	24	25
A																									
B																									
C																									
D																									
E																									
F																									
G																									
H																									
I																									
J																									
K																									
L																									
M																									
N																									
O																									
P																									
Q																									
R																									
S																									
T																									
U																									
V																									
W																									
X																									
Y																									
Z																									

PLACE MONUMENT SYMBOL (◆) AT PROPER LOCATION ON ABOVE INDEX

**EXAMPLE**



ROCK TWP  
 ROCK COUNTY WI

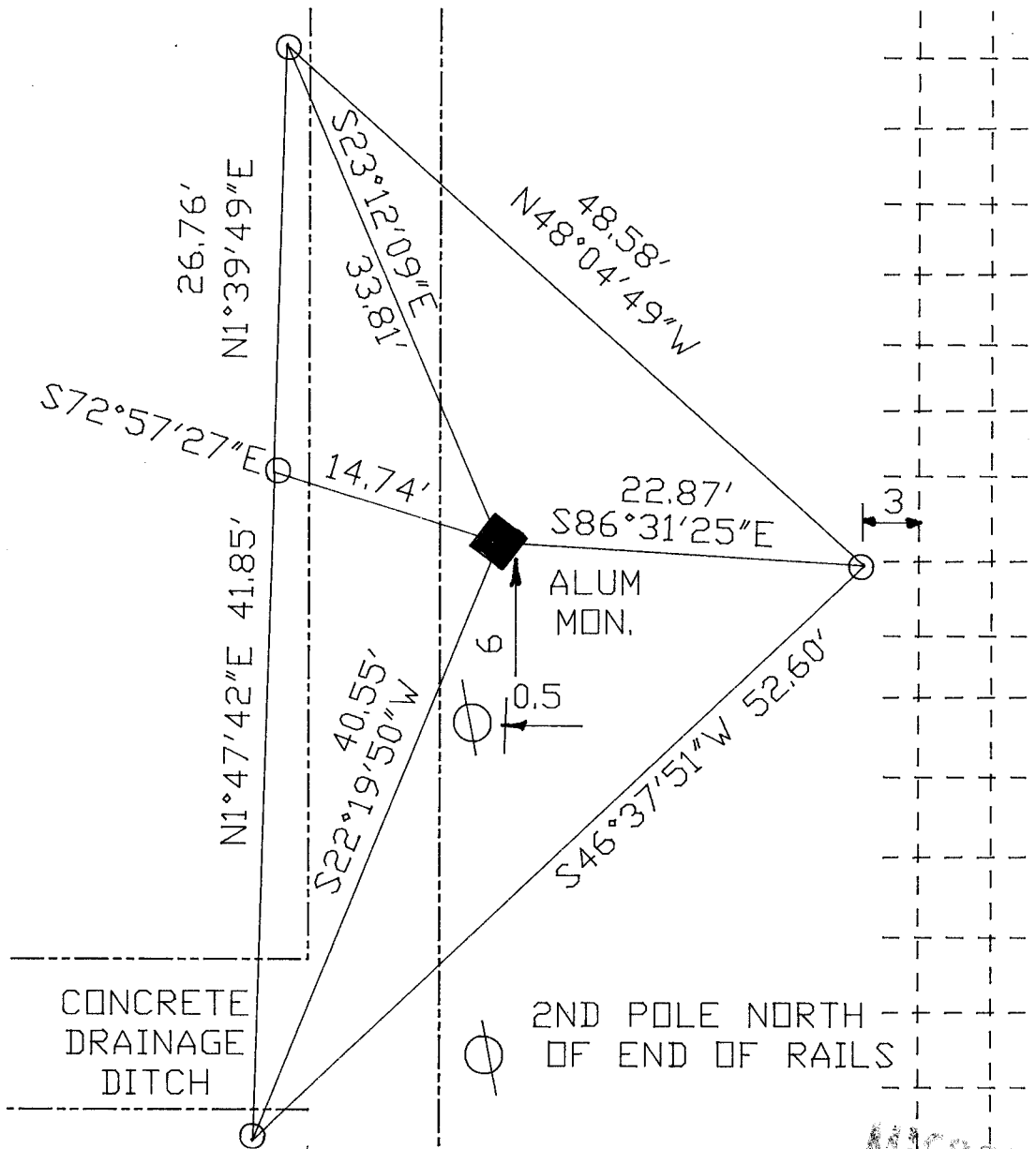
IF AVAILABLE  
 STATE PLANE COORDINATES

North (Y) \_\_\_\_\_ Elev. (Z) \_\_\_\_\_  
 East (X) \_\_\_\_\_ Zone \_\_\_\_\_  
 Hor. Datum \_\_\_\_\_ Vert. Datum \_\_\_\_\_

◆ CORNER MONUMENT

○ WITNESS MONUMENT

BEARINGS ARE BASED ON: Imp project



FIELD BK#3 PG 51

○ 3/4X24 REROD WITH PLASTIC CAP  
 SHEET \_\_\_ OF \_\_\_

MICROFILMED

CORNER CODE: E 23

(B) Describe any record evidence, monument evidence, occupational evidence, testimonial evidence or any other material evidence you considered, and whether the monument was found or placed.

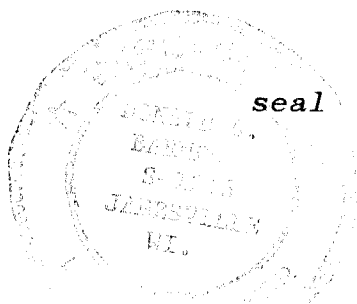
- 1836 LYON ORIGINAL GOVERNMENT SURVEYOR. FIELD NOTES - SET QUARTER SECTION POST & MADE MOUND OF EARTH AND SOD 4 FEET SQUARE & 2 /12 FEET HIGH. MEASURED 2533.08 TO SE CORNER OF SECTION 1 AND 2640 TO SW CORNER OF SECTION 1.
- 1877 RUGER VOL 2 PG 40. FOUND OLD STAKE. SET LIMESTONE 17X6X4 AND SURROUNDED IT WITH SEVERAL SMALL LIMESTONES. CORNER IS 1.98' WEST OF N/S BOARD FENCE-CUT BOARDS TO SHOW THE LINE. SHOWS A DISTANCE OF 2636.7 TO SW CORNER OF SECTION 2 AND 2548.92 TO SE CORNER OF SECTION 2.
- 1891 BLEEDORN VOL 2 PG 454 FOUND CORNER AND SHOWS A DISTANCE OF 2644.84 TO THE SW CORNER OF SECTION 1.
- 1920 KERCH PLAT OF SURVEY. CALLS FOR AN ANGLE OF 91-32 FROM THE E 1/4 CORNER TO THE N 1/4 CORNER OF SECTION 12 AT THE NE CORNER.
- 1937 SUNNY WILCOX SUBDIVISION CALLS FOR AN ANGLE OF 91-36-00 FROM THE E 1/4 CORNER TO THE N 1/4 CORNER OF SECTION 12 AT THE NE CORNER OF SECTION 12.
- 1937 SUNNY PLAT OF SURVEY. CALLS FOR THE CORNER AND A DISTANCE OF 1323.0 TO THE N 1/16TH CORNER OF THE NW 1/4 OF SECTION 12.
- 1943 SUNNY PLAT OF SURVEY FOUND CUT STONE MONUMENT. CALLS FOR 2651.6 TO THE CENTER OF SECTION 12.
- 1944 SUNNY PLAT OF SURVEY FOUND STONE. CALLS FOR AN ANGLE OF 88-33-00 FROM THE NE TO CENTER OF SECTION 12 AT THE N 1/4 CORNER.
- 1956 SUNNY PLAT OF SURVEY FOUND 6X6X30 STONE MONUMENT AT THE N 1/4 CORNER AND N 1/16TH CORNER OF THE NW 1/4 OF SECTION 12. CALLS FOR 331 TO THE PIPE THAT IS EAST OF THE CORNER.
- 1956 SUNNY PLAT OF SURVEY FOUND 6X6X30 STONE MONUMENT AT THE N 1/4 CORNER AND N 1/16TH CORNER OF THE NW 1/4 OF SECTION 12. CALLS FOR 2653.4 TO THE CENTER OF SECTION 12.
- 1962 THOM FOUND CUT STONE AT THE N 1/4 CORNER AND N1/16TH CORNER OF THE NW 1/4 OF SECTION 12.
- 1970 LEE PLAT OF SURVEY. CALLS FOR AN ANGLE OF 91-32-30 FROM THE E 1/4 CORNER TO THE N 1/4 CORNER OF SECTION 12 AT THE NE CORNER OF SECTION 12.
- 1985 LUENBURGER PLAT OF SURVEY. STARTS AT THE CORNER BUT STATES NOTHING ABOUT IT.
- 1989 COMBS PLAT OF SURVEY. CALLS FOR 1322.97 FROM THE NW COR TO THE N 1/16TH CORNER OF THE NW 1/4 OF SECTION 12.

IT IS APPARENT FROM THE IMPROVEMENTS THAT THE CORNER WAS EITHER DESTROYED OR BURIED MANY YEARS AGO. DUG AND FOUND FILL. PLACED ALUMINUM MONUMENT. CORNER IS IN ASPHALT PAVEMENT. USED THOM'S SURVEY TO RESTORE THE CORNER. THE LOCATION IS IN HARMONY WITH ALL ANGLES AND DISTANCES IN THE SURVEY.

C) Was the corner restored through acceptance of (1) an obliterated evidence location, or, (2) a found perpetuated location?

RESTORED CORNER THROUGH ACCEPTANCE OF FOUND PERPETUATED LOCATION.

I, Donald Barnes, hereby certify that the corner points as identified by the corner code index were, in a field survey on, SEPTEMBER 12, 1991 established, re-established, monumented, re-monumented, recovered or restored as expressed below and in conformance with the regulations and rules as required in the current manual of survey instructions of the United States Department of Interior, Bureau of Land Management.



COUNTY SURVEYOR FILING DATA

Date of computer entry \_\_\_\_\_

Date microfilmed \_\_\_\_\_

Number of included sheets \_\_\_\_\_

10F3

E23

RESTORED CORNER

1/16th  
COR

S88°59'51"E 1323.38'

NW COR  
SEC 12

FD CONCRETE MONUMENT

THOM 1323.38  
CITY MAP 1323.04  
SUNNY 1323.16  
S88°58'04"E 1323.55'

N 1/4 COR  
SEC 12

S88°49'41"E 330.21'

REC 88-19-00  
88-07-48

REC 160.34  
S0°41'53"E 160.53'

FD 1" PIPE LEANING

REC 91-41-00  
91-45-04

S88°56'50"E 2223.82'

NE COR  
SEC 12

FD 1" PIPE



THOM 2651.67  
N0-26-27W 2652.48

THOM 88-31-30  
88-15-37

THOM 91-26-45  
91-25-19 NW COR 1/16TH COR  
THOM 2652.74  
S0°24'16"E 2652.43'

THOM 88-33-00 (NE COR TO CENTER)  
88-34-38 (NE COR TO S 1/4 COR)  
88-25-25 (FD PIPE TO CENTER)

THOM 91-28-22  
91-28-28-30

THOM 88-33-48  
88-33-15

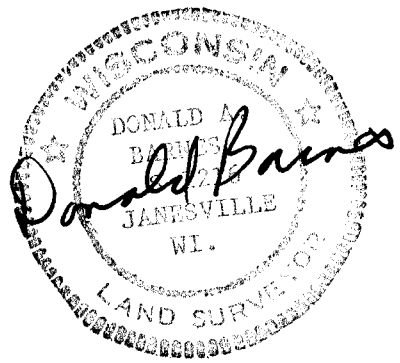
REC 33.00  
N0°05'50"W 32.99'

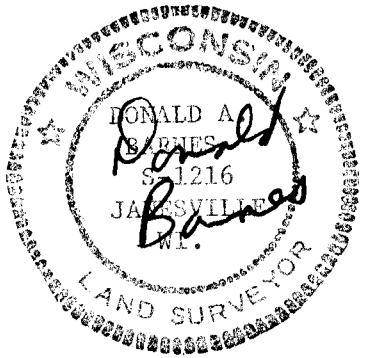
FD 1 1/2" PIPE

THOM 1322.20  
S88-58-04E 1321.86

FD PK  
CENTER

COMPUTED POSITION  
1/16th  
COR





SEC 2

W 1/4 CDR

S89-58-05E 5215.08  
RUGER 1882 2513.34

CENTER

E 1/4 CDR

SEC 1

30P 3  
E 23

NW CDR

REC 91-108  
REC 91-104-04

S0-26-14E 2672.96  
CDHBS 1989 2673.00  
SUB 2671.48  
ELY 1920 1671.80  
ELY 1920 2673.00  
REC 2671.80

REC 88-42-38  
REC 88-48-48

91-16-24  
REC 91-16-21-25

S89-19-02E 2667.47  
RUGER 1871 2665.74  
RUGER 1870 2665.74

KUKUSKE 1959 1334.07

89-37-39  
REC 89-37-39

S89-15-26E 2673.73  
CDHBS 1987 2673.74  
RUGER 1889 2673.74  
LOCKE 1863 2663.70

NE CDR

SUNNY 1937.22

N0-51-34W 2650.64  
MILLER 2655.18  
RUGER 2649.90  
LOCKE 2649.57

N 1/4 CDR

CITY MAP 1322.50  
BATTERMAN 1957 2669.33  
SUNNY #06349 2613.00  
BLEEDHORN 1891 2644.84  
RUGER 1877 2636.70  
SUNNY 1290.0 CENTER OF P.W.M.

89-99-51E 1323.38 1381  
S88-58-04E 1323.55  
CITY MAP 1322.50  
SUNNY 1323.04  
SUNNY 1323.6

115 OFF NW/NE LINE  
55 OFF 1/16-NE LINE

S88-55-54E 2554.04  
RUGER 1877 2548.92  
RUGER 1870 2548.92  
RUGER 2548.92

SUNNY 1337.22

NE CDR

BATTERMAN 1962 2649.98  
BARNES S0-29-17E 2650.05  
SUNNY 1939 2759.68  
RUGER 1871 2649.57

W 1/4 CDR

89-31-53  
REC 89-31-53

S0-17-29E 2643.57  
RUGER 1883 2641.98

RHD 1322.88

REC 90-42-29

89-15-17(CENTER)  
REC 89-17

REC 90-51-30  
90-53-28 CENTER

S89-32-45E 2662.85  
REC 2661.10

.22 OFF N/S LINE  
.148 OFF E/W LINE

CENTER

KAKUSKE 1960 5332.81  
N0-19-45W 2662.23  
MAP 3865 1331.8

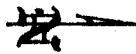
SEC 11

COMMONS SOUTH  
BIAGI 1972 1324.40  
N0-19-11W 2644.68

REC 89-09-30  
REC 179-5-9-45  
180-00-00-33

REC 90-50-49  
90-50-50-15

KANDLER 2680.72  
KAKUSKI 1965 2679.68  
S89-28-56E 2680.25



W 1/4 CDR

S0-0-25E 2642.61  
RUGER 1883 2641.98  
RUGER 1870 2636.87

BATTERMAN 1957 2669.33  
SUNNY 1937.22  
S0-28-26E 2651.83  
SUNNY 1929 2650.8

RUGER 2644.37  
SUNNY 2650.8

91-29-20  
BATTERMAN 1959  
91-29-22  
91-30-30-21(CENTER)

BATTERMAN 1959 1321.50  
S88-58-04E 2643.73

REC 91-28-30  
91-28-22  
COMPUTED POSITION

REC 88-33-48  
88-33-48

S0-24-16E 2651.88  
SUNNY 1956 2652.44  
SUNNY 1944 2651.6

SEC 12

CDHBS 1976 1321.22  
S0-00-21E 1321.51

S0-00-28E 1321.11

S0-17-36E 2639.14

2.56 OFF N/S LINE  
.44 OFF E/W LINE

CENTER

S88-59-14E 2557.83



S0-26-30E 2646.28  
RUGER 1871 2647.26  
LOCKE 1865 2640.92  
LOCKE 1865 2641.58

E 1/4 CDR

SW CDR

S89-31-21E 2663.60  
BATTERMAN 1947 2634.95  
RUGER 1883 2648.80  
LOCKE 1867 2630.56

S 1/4 CDR

S89-31-23E 2663.79  
LEE 1880 2656.30  
LOCKE 1867 2664.75

SE CDR

S89-02-53E 2656.87  
KANDLER 1964 2657.85

S 1/4 CDR

LEE 1869 2647.92  
S88-49-54E 2564.85

SE CDR