

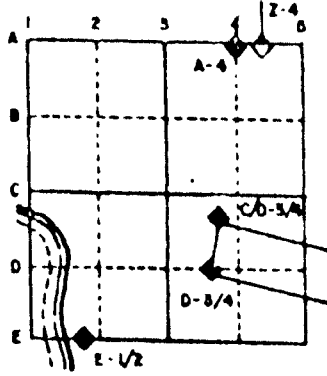
# U. S. PUBLIC LAND SURVEY MONUMENT RECORD

For Public Land Survey Corners in the  
T. 2 N., R. 12 E.  
CORNER CODE INDEX

	1	2	3	4	5	6	7	8	9	10	11	12	13	14	15	16	17	18	19	20	21	22	23	24	25
A																									
B																									
C	6																								
D		5																							
E			4																						
F				3																					
G					2																				
H																									
I	7																								
J		8																							
K			9																						
L				10																					
M					11																				
N						12																			
O	18																								
P		17																							
Q			16																						
R				15																					
S					14																				
T						13																			
U	19																								
V		20																							
W			21																						
X				22																					
Y					23																				
Z						24																			
							25																		
								26																	
									27																
										28															
											29														
												30													
													31												
														32											
															33										
																34									
																	35								
																		36							

PLACE MONUMENT SYMBOL (◆) AT PROPER LOCATION ON ABOVE INDEX

EXAMPLE



ROCK TWP  
ROCK COUNTY WI

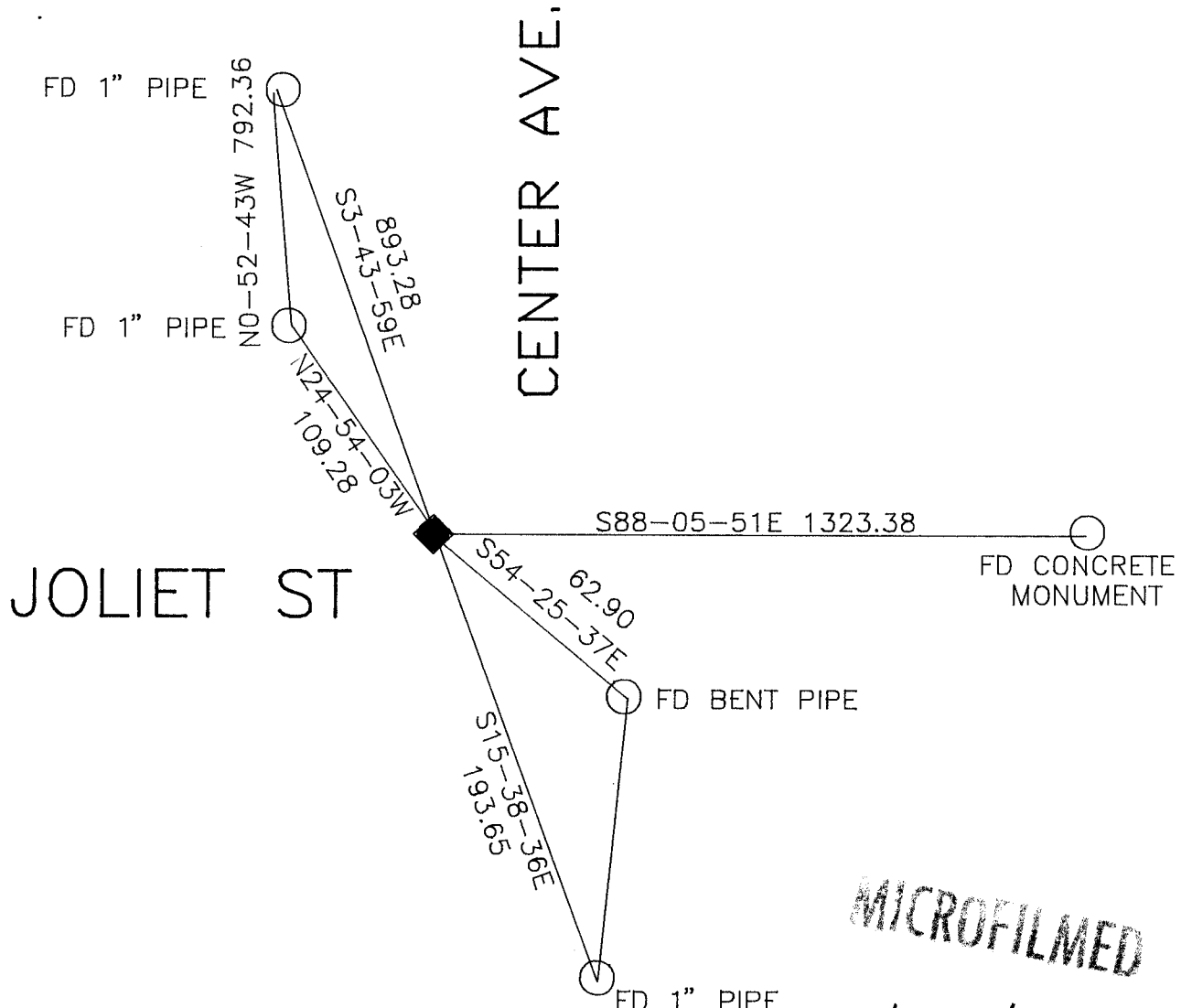
IF AVAILABLE  
STATE PLANE COORDINATES

North (Y) \_\_\_\_\_ Eleve. (Z) \_\_\_\_\_  
 East (X) \_\_\_\_\_ Zone \_\_\_\_\_  
 Hor. Datum \_\_\_\_\_ Vert. Datum \_\_\_\_\_

◆ CORNER MONUMENT

○ WITNESS MONUMENT

BEARINGS ARE BASED ON: Top project



MICROFILMED

SHEET 1 OF 6

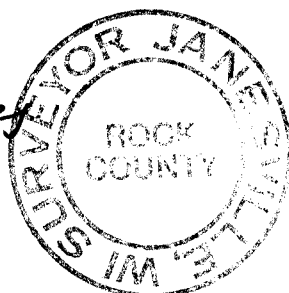
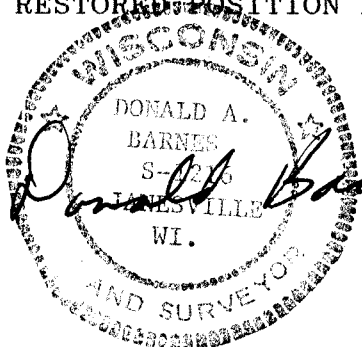
CORNER CODE: E 21

(B) Describe any record evidence, monument evidence, occupational evidence, testimonial evidence or any other material evidence you considered, and whether the monument was found or placed.

- 1859 RUGER VOL 1 PG 86 SHOWS CORNER BUT STATE NOTHING ABOUT IT. USED IT TO SUBDIVIDE THE WEST HALF OF THE SW QUARTER OF SECTION 1.
- 1865 LOCKE VOL 1 PG 246 FOUND STUMPS OF B. TREES & OLD STAKE AND SURROUNDED IT BY THREE LIMESTONES. SHOWS A DISTANCE OF 2649.57 TO THE WEST QUARTER CORNER OF SECTION 1 AND 2669.70 TO THE SOUTH QUARTER CORNER OF SECTION 2.
- 1869 RUGER VOL 2 PG 15 STAKE SURROUNDED BY 3 LIMESTONES. SHOWS A DISTANCE OF 2649.9 TO THE EAST QUARTER CORNER OF SECTION 2 AND 2672.12 TO THE SOUTH QUARTER CORNER OF SECTION 2
- 1870 RUGER VOL 2 PG 41 SEE SECTION 2 ROCK. SHOWS A DISTANCE OF 2636.70 TO THE NORTH QUARTER CORNER OF SECTION 12 AND 2644.37 TO THE WEST QUARTER CORNER OF SECTION 12.
- 1877 RUGER VOL 2 PG 40 SEE PLAT OF SURVEY SECTION 2. SHOWS A DISTANCE OF 2636.70 TO THE SOUTH QUARTER CORNER OF SECTION 1 AND 2649.57 TO THE WEST QUARTER CORNER OF SECTION 1.
- 1883 RUGER VOL 2 PG 379 FOUND STAKE. SET ON TOP LIMESTONE 16X7X6 AND SURROUNDED BY 4 LIMESTONES.
- 1883 RUGER FIELD NOTES BOOK K PG 73 SHOWS A DISTANCE OF 2643.96 TO THE WEST QUARTER CORNER OF SECTION 12.
- 1884 RUGER VOL 2 PG 378 STATES NOTHING ABOUT CORNER BUT USED IT TO PLACE THE S 1/6th CORNER OF THE SE QUARTER OF SECTION 2.
- 1908 KERCH BOOK K4 PG 9 STATES THAT HE FOUND A STONE MONUMENT AND CALLS FOR A DISTANCE OF 2657.9 TO THE EAST QUARTER CORNER OF SECTION 2. THE TENTHS WAS VERY DIFFICULT TO READ AND MAY BE IN ERROR.
- 1919 BATTERMAN VOL 3 PG 91 FOUND LIMESTONE WITH CROSS NOTCH CUT IN TOP. REFERENCED CORNER FOR CONSTRUCTION PROJECT. ALSO FOUND AND REFERENCED THE W 1/16th CORNER OF THE NW 1/4 OF SECTION 12
- 1929 SUNNY PLAT OF SURVEY STATES THAT HE FOUND A IRON PIPE. SHOWS A DISTANCE OF 1322.5 TO THE 1/16th CORNER TO THE EAST AND 2650.8 TO THE WEST QUARTER CORNER OF SECTION 12 WHICH IS A IRON PIPE.
- 1937 SUNNY VOL 3 PG 336 FOUND C.I. MONUMENT. USED TO ESTABLISH THE WEST LINE OF SECTION 12 FOR A PLAT OF SURVEY. FOUND A C.I. AT THE W 1/6th CORNER OF THE NW QUARTER OF SECTION 12.
- 1938 SUNNY VOL 3 PG 388 FOUND A 2" C.I. MONUMENT. ALSO FOUND A 2" C.I. MONUMENT AT THE WEST QUARTER CORNER AND THE W 1/16th CORNER OF THE SW 1/4 OF SECTION 12.
- 1959 BATTERMAN - PLAT OF SURVEY - FOUND C.I. 2.2 EAST OF CENTER OF PAVEMENT.
- 1964 SHIMEAL - PLAT OF SURVEY IN COMBS'S OFFICE - FOUND PLUG.
- 1964 KAKUSKE "NICOLET SOUTH ADDITION" BK 22 PG 15. CALLS FOR A IRON MONUMENT AND AN ANGLE OF 88-23-30 AT THE CORNER. ALSO CALLS FOR A R/W OF 45.02 ON THE WEST SIDE OF CENTER AT THE CORNER.
- 1977 COMBS CSM VOL 7 PG 43 STARTS AT THE CORNER BUT DOES NOT STATE THE TYPE OF MONUMENT.
- 1980 COMBS LAFAYETTE PARK CALLS FOR A 1" PIPE.
- 1986 COMBS C.S.M VOL 12 PG 445. STARTS AT THE CORNER BUT DOES NOT STATE THE TYPE OF MONUMENT.

DUG AND FOUND NOTHING. PLACED ALUMINUM MONUMENT. RESTORED CORNER BY USING THE FOLLOWING:

- 1) BATTERMAN ANGLE OF 88-23-30 FROM THE N 1/4 CORNER TO THE W 1/4 CORNER OF SECTION 12 IS IN HARMONY WITH THE RESTORED POSITION ANGLE OF 88-23-52.
- 2) KAKUSKE'S ANGLE OF 88-23-30 FROM THE N 1/4 CORNER OF SECTION 11 TO THE W 1/4 CORNER OF SECTION 1 IS IN HARMONY WITH THE RESTORED POSITION ANGLE OF 88-23-52.



1 OF 6

E21

3) THIS POSITION IS SUCH THAT THE MONUMENT AT THE S 1/16TH CORNER OF THE SW 1/4 OF SECTION 1 IS .34' NORTH OF A LINE BETWEEN THE NW AND N 1/4 CORNERS OF SECTION 12.

4) THE DISTANCE OF 1323.38 TO THE ABOVE MENTIONED 1/16TH CORNER IS IN HARMONY WITH THE 1323.55 DISTANCE TO THE N 1/4 CORNER OF SECTION 12.

5) THIS POSITION IS IN HARMONY WITH "NICOLET SOUTH ADDITION".

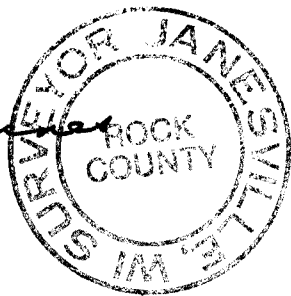
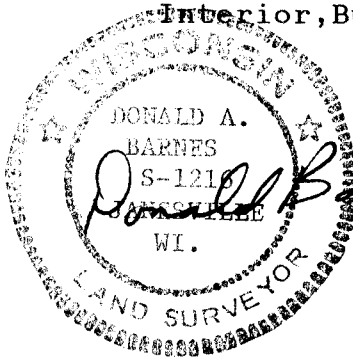
6) THIS POSITION IS IN HARMONY WITH BATTERMAN'S ANGLE OF 91-29-20 FROM THE NW CORNER TO THE EAST QUARTER CORNER OF SECTION 12 AT THE WEST QUARTER CORNER OF SECTION 12. THAT ANGLE IS 91-29-47.

C) Was the corner restored through acceptance of (1) an obliterated evidence location, or, (2) a found perpetuated location?  
RESTORED CORNER THROUGH ACCEPTANCE OF OBLITERATED EVIDENCE LOCATION.

(D) Describe any material discrepancy between the location of the corner as restored or reestablished and the location of that corner as previously restored or reestablished by distance and direction. Show the discrepancy on the plan view drawing under (a), above. Show the distances between the corner as previously restored or reestablished and (1) the corner as restored or reestablished, and (2) to at least 4 or the witness monuments shown on the drawing in (a), above.

THERE IS A DISCREPANCY WITH THE POSITION AS DETERMINED FROM CSM VOL 12 PG 445 (1989). THAT COMPUTED POSITION IS ABOUT 0.62' SOUTH AND ABOUT 0.75 EAST OF THE POSITION THAT I RESTORED.

I, Donald Barnes, hereby certify that the corner points as identified by the corner code index were, in a field survey on September 4, 1991, established, reestablished, monumented, re-monumented, recovered or restored as expressed below and in conformance with the regulations and rules as required in the current manual of survey instructions of the United States Department of Interior, Bureau of Land Management.;



COUNTY SURVEYOR FILING DATA

Date of computer entry \_\_\_\_\_

Date microfilmed \_\_\_\_\_

Number of included sheets \_\_\_\_\_

CORNER CODE

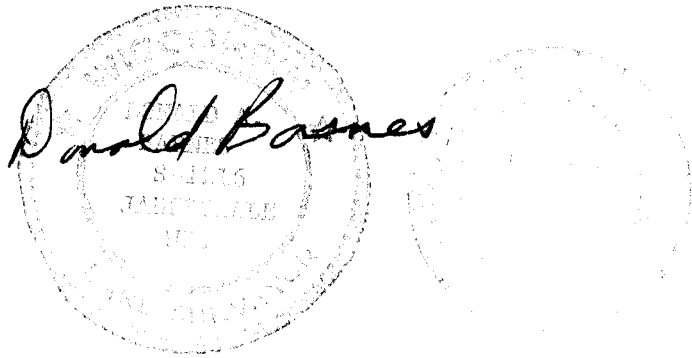
AFFIX YOUR LAND SURVEYOR SEAL

2 OF 6

E 21







W 1/4 COR  
SEC 1

FD 1 1/2" PIPE

REC 100 122.10' S0°54'48"E 44.73

FD SPIKE NAIL

REC 192 200.09' S1°09'25"E 44.62

FD PIPE

REC 203.00 207.86' S0°33'32"E 43.58

FD PIPE 44.67

MITCHEL ST

FD PIN

REC 252 N89-0-27E 251.91

90-01-34

HOLDING REC DIST 90-00-18 REC 90

REC 50.00 50.01' S0°50'48"E 45.41

FD PIPE

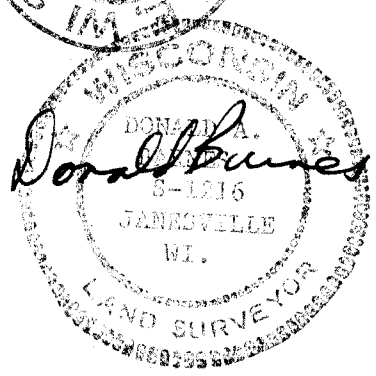
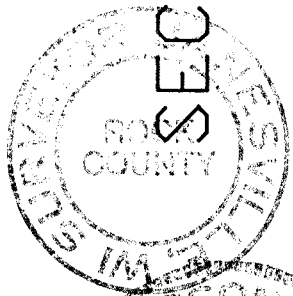
OVERLOOK HEIGHTS ADD NO#2  
HULL 1929 BK 7 PG 63

OVERLOOK HEIGHTS ADD NO#2  
HULL 1929 BK 7 PG 63



5 OF 6

E 21

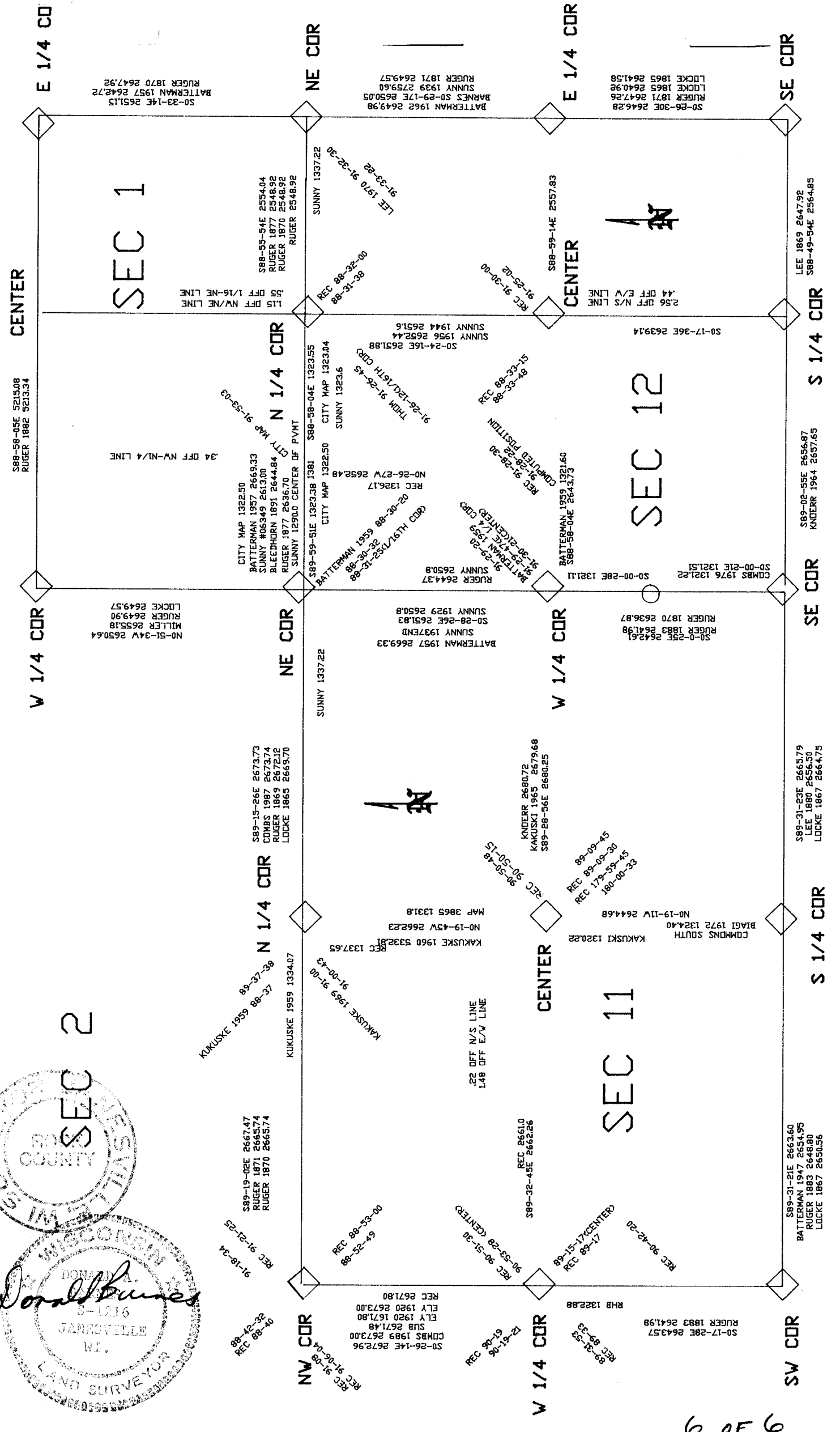


SEC 2

SEC 1

SEC 11

SEC 12



6 OF 6  
E 21