



- 1847 BINNEY - MILTIMORE'S ADDITION BK 1 PG 13 STATES NOTHING ABOUT THE CORNER BUT STATES THAT THERE IS A STONE ON THE TOWNSHIP LINE AT LINN ST. AND THE DISTANCE BETWEEN THE TWO IS 340.66. ALSO STATES THAT THE CORNER IS 66' EAST OF THE WEST EDGE OF CENTERWAY AND 43.56 WEST OF THE EAST EDGE OF CENTERWAY. ALSO STATES THAT THE CORNER IS 33' NORTH OF THE SOUTH EDGE OF ROCKPORT RD AND 36.96 SOUTH OF THE NORTH EDGE OF ROCKPORT RD. ROCKPORT ROAD ALSO RUNS PARALLEL TO THE TOWNSHIP LINE.
- 1860 RUGER- STONES ADDITION BK 3 PG 44 STATES NOTHING ABOUT THE CORNER EXCEPT THAT THE CENTER OF LYNN ST IS 346.5 FROM THE CORNER.
- 1877 RUGER VOL 2 PG 40 VERY LARGE LIMESTONE SET AT CORNER IN A FORMER SURVEY. SHOWS A IRON PIN ON THE SECTION LINE TO THE SOUTH. SHOWS A DISTANCE OF 2652.38 TO THE NORTH QUARTER CORNER OF SECTION 1.
- 1929 STATE HIGHWAY PLANS. SHOWS A DISTANCE BETWEEN THE NW AND W 1/4 CORNERS OF SECTION 1 AS 2869

THE AREA CONTAINS MANY DIFFERENT TYPES OF UNDERGROUND IMPROVEMENTS. I DID NOT FIND ANY SURFACE MONUMENT. I ALSO DID NOT ATTEMPT TO DIG FOR THE CORNER BECAUSE OF THE NUMBER AND LOCATION OF THOSE IMPROVEMENTS. THE MONUMENT WAS PROBABLY DESTROYED. I ESTABLISHED THE CORNER BY USING THE MONUMENTS THAT I FOUND IN MILTIMORE SUB. ALL THESE MONUMENTS AND THE TOWNSHIP LINE ARE IN HARMONY AS THE FOLLOWING DATA DEMONSTRATES.

LINE 1073 - 1095

POINT	OFF SET DISTANCE
1073	.00
1071	.54
1096	.35
1095	.00

LINE NE COR 2 TO N 1/4 COR SEC 2

POINT	OFF SET DISTANCE	
	REC DISTANCE	COMPUTED DISTANCE
1085	33	33.09
1073	33	32.97
1074	36.96	36.73
1088	36.96	36.87
1076	36.96	36.97
1089	33	32.29
1071	33	32.99

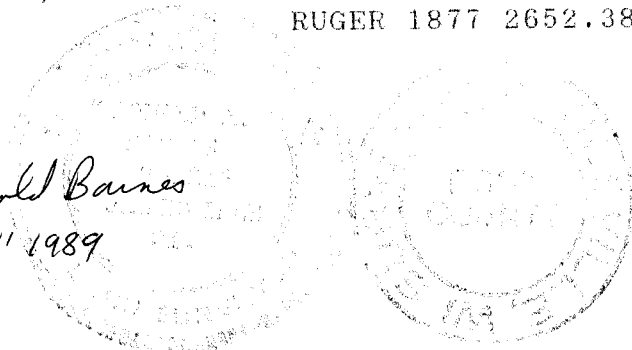
LINE NE COR 2 TO N 1/4 COR SEC 1

POINT	OFF SET DISTANCE	
	REC DISTANCE	COMPUTED DISTANCE
1096	33	33.08
1095	33	33.07
1083	26	26.96

1083-PALMER & SOUTHERLAND SUB BK 1 PG 11,11A

1053 TO 1071 REC 66 COMPUTED 66.03  
 N 1/4 COR SEC 2 TO NE COR SEC 2 N88-23-15E 2662.10  
 NW COR SEC 1 TO N 1/4 COR SEC 1 N88-08-11E 2656.36  
 RUGER 1877 2652.38

*Donald Barnes*  
 May 11 1989



**20F3**  
**A 21**

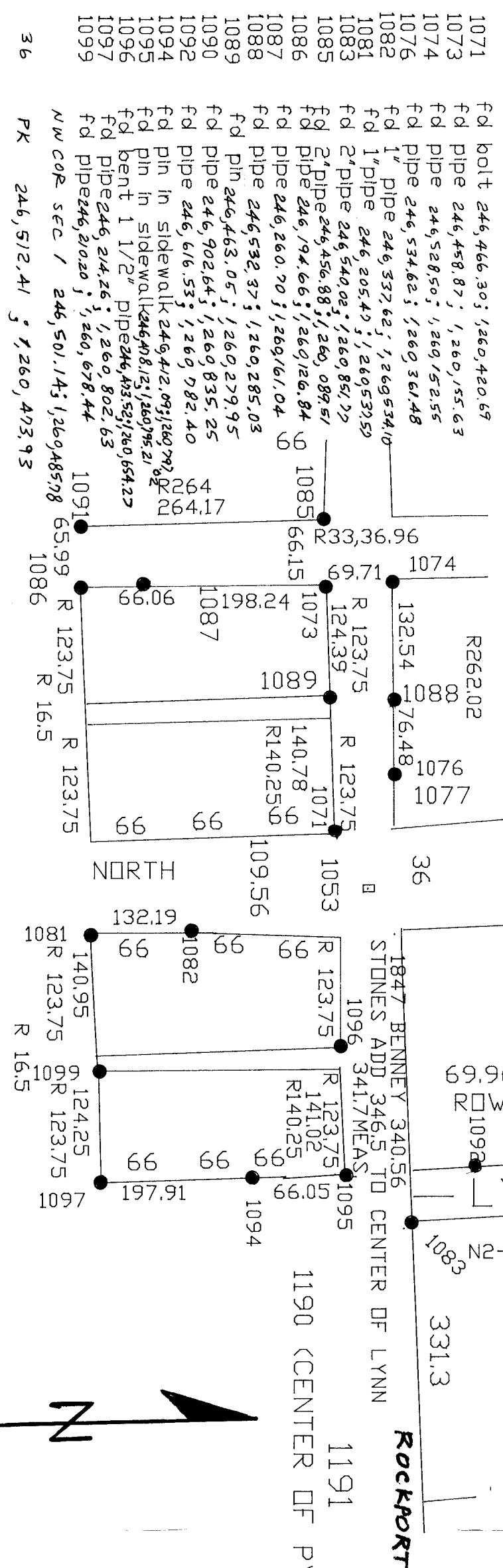
Donald Barnes  
May 11 1989



MILTIMORE SUB CAPTION-COR 66' EAST OF WEST EDGE OF CENTERWAY &  
43.56 WEST OF EAST EDGE OF CENTERWAY  
CORNER ON LINE OF INTERSECTION OF ROCKPORT (WESTERN)  
WESTERN AVE. RUNS PARALLEL WITH TOWN LINE

1073-1095 R637.56, FM639.87  
1073-1053 R330, PROPORTIONATE MEAS 331.20  
1071-1053 R66, COMPUTED 66.02

NW COR SEC 1-511



CAPTION STATES NORTH RD LINE IS 39.96' NORTH OF TOWN LINE & SOUTH ROW LINE IS 33' SOUTH OF TOWN LINE