

U.S. PUBLIC LAND SURVEY MONUMENT RECORD

For Public Land Survey Corners in the

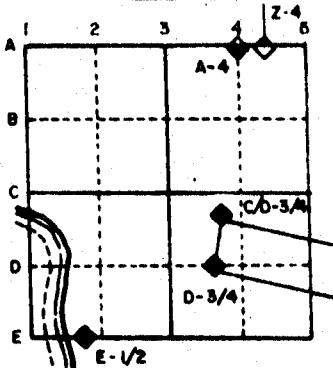
T. 2 N., R. 12 E.

CORNER CODE INDEX

	1	2	3	4	5	6	7	8	9	10	11	12	13	14	15	16	17	18	19	20	21	22	23	24	25
A																									
B																									
C	6	5	4	3	2																				
D																									
E																									
F																									
G	7	8	9	10	11	12																			
H																									
I																									
J																									
K	18	17	16	15	14	13																			
L																									
M																									
N																									
O																									
P	19	20	21	22	23	24																			
Q																									
R																									
S																									
T	30	29	28	27	26	25																			
U																									
V																									
W																									
X																									
Y	31	32	33	34	35	36																			
Z																									

PLACE MONUMENT SYMBOL (◆) AT PROPER LOCATION ON ABOVE INDEX

EXAMPLE



ROCK TWP
ROCK COUNTY WI

IF AVAILABLE
STATE PLANE COORDINATES

North (Y) _____ Eleve. (Z) _____
 East (X) _____ Zone _____
 Hor. Datum _____ Vert. Datum _____

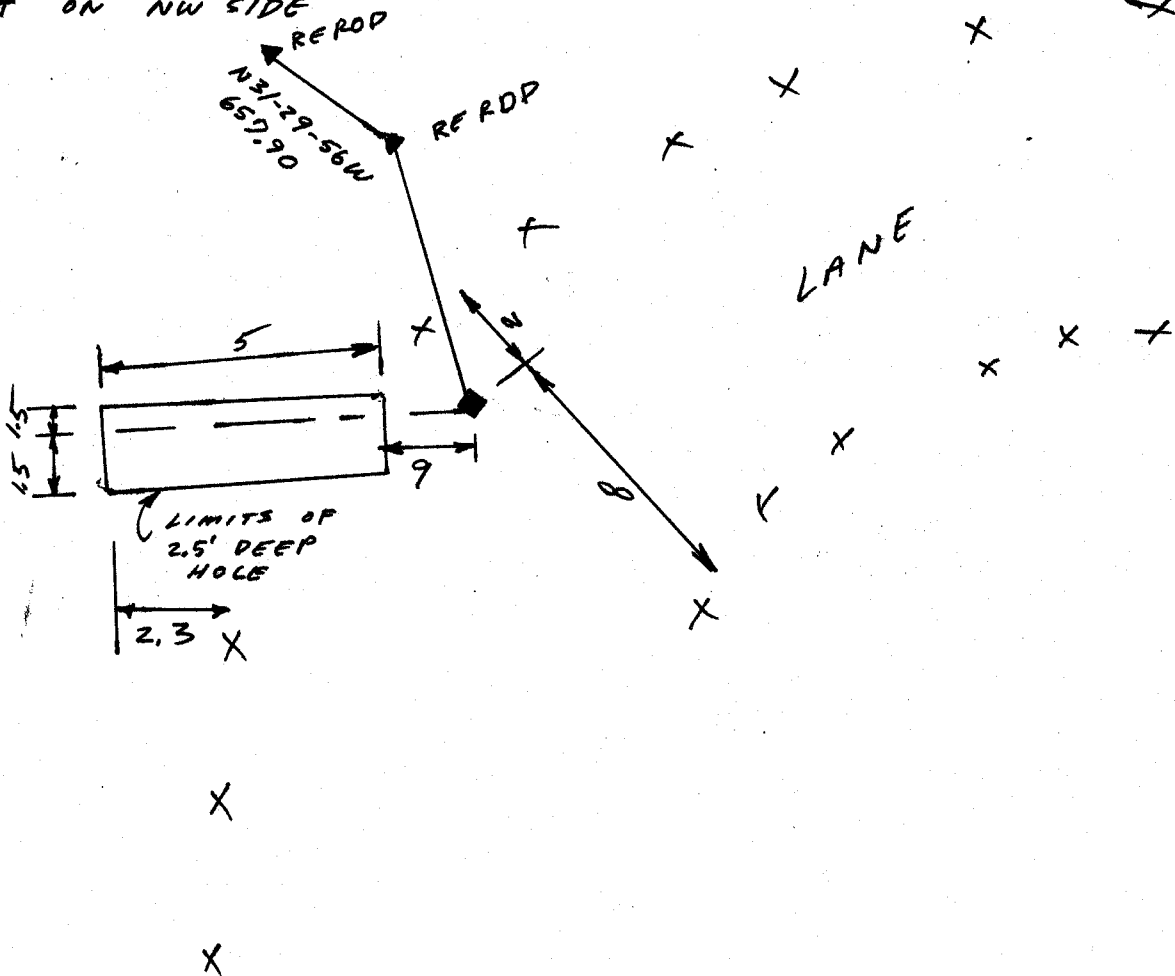
(a.)

◆ CORNER MONUMENT

○ WITNESS MONUMENT

2" PIPE 6' WHITE
PLASTIC POST ON NW SIDE

BEARINGS ARE BASED ON: STATE PLANE



FIELD BOOK 2 PAGE # 36

MICROFILMED

SHOW A PLAN VIEW DRAWING DEPICTING THE CORNER MONUMENT AND SURROUNDING PHYSICAL FEATURES, INCLUDING THE EXCAVATION AREA AND DEPTH. THE CORNER MONUMENT SHALL HAVE THE FOLLOWING CHARACTERISTICS: 1) HAVE AT LEAST TWO PREDETERMINED BREAK-OFF POINTS. 2) IF BROKEN, LEAVE A PERMANENTLY MAGNETIZED REMNANT AT THE ORIGINAL POINT. 3) MUST BE EXTENDABLE. 4) THE CAP IS INSCRIBED: ROCK COUNTY SURVEY MONUMENT - PENALTY FOR DISTURBING MARKER. 5) OR AN EXISTING CUT LIMESTONE. AN IRON PIPE 1 1/2" x 4'0" (MINIMUM) MAY BE USED IN AREAS WHERE GROUND WATER IS WITHIN ONE FOOT OF THE SURFACE. IF THE CORNER IS OCCUPIED BY AN IMPROVEMENT (MANHOLE, BURIED CABLE, ETC.) ANY DURABLE, DISTINCT MONUMENT MAY BE USED. CORNERS SHALL BE REFERENCED WITH AT LEAST 4 DURABLE WITNESS MONUMENTS. WITNESS MONUMENTS SHALL BE MADE OF CONCRETE, NATURAL STONE, IRON OR OTHER EQUALLY DURABLE MATERIAL, EXCEPT WOOD. DESCRIBE THE CORNER AND THE WITNESS MONUMENTS.

CORNER CODE:
T 23

(b.) Describe any record evidence, monument evidence, occupational evidence, testimonial evidence or any other material evidence you considered, and whether the monument was found or placed.

1873 LEE VOL 2 PG 95 PLACED A LIMESTONE SURROUNDED BY 4 LIMESTONES AT THE INTERSECTION OF THE QUARTER LINES.

1908 KERCH FIELD BOOK K3 PG 134,135 THE SECTION NUMBER WAS
CROSSED AND ANOTHER NUMBER WRITTEN IN BY SHIMEALL. KERCH'S
DISTANCE FROM THE SW CORNER OF SECTION 25 TO THE SOUTH
QUARTER CORNER AND EAST QUARTER CORNERS ARE IN HARMONY WITH
MY DISTANCES. HIS DISTANCES TO THE CENTER OF 25 ARE NOT IN
HARMONY WITH MY DISTANCES. HE STATES NOTHING ABOUT THE
CORNER.

(c.) Was the corner restored through acceptance of (1) an obliterated evidence location, or (2) a found perpetuated location?

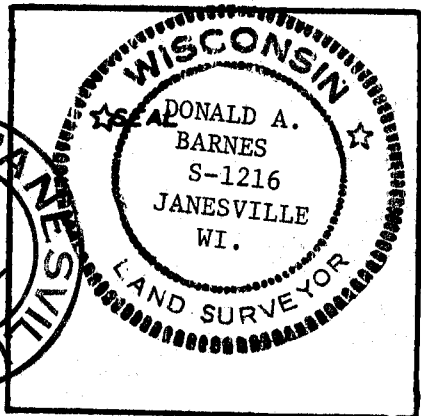
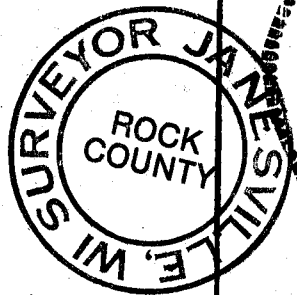
FOUND 2" PIPE AND PLACED WHITE PLASTIC POST ON NW SIDE. ALSO DUG
AT LEE'S RECORD DISTANCE FOR HIS LIMESTONE AND FOUND NOTHING.
THE PIPE IS .10 NORTH OF THE E/W QUARTER LINE AND .02 EAST OF THE
N/S QUARTER LINE.

(d.) Describe any material discrepancy between the location of the corner as restored or reestablished and the location of that corner as previously restored or reestablished by distance and direction. Show the discrepancy on the plan view drawing under (a), above. Show the distances between the corner as previously restored or reestablished and (1) the corner as restored or reestablished, and (2) to at least 4 of the witness monuments shown on the drawing in (a), above.

ACCEPTED FOUND PIPE AS THE CENTER OF SECTION

(e.) Was the corner reestablished through lost corner proportionate methods? If so, show the method, including the directions and distances to other public land survey corners used as evidence or used for proportioning in determining the corner location.

I, Donald Barnes, hereby certify that the corner points
as identified by the corner code index were, in a field survey on
JANUARY 24, 1989, established, re-established, monumented, re-monumented,
recovered or restored as expressed below and in conformance with the
regulations and rules as required in the current manual of survey
instructions of the United States Department of Interior, Bureau
of Land Management.



COUNTY SURVEYOR FILING DATA

Date of Computer Entry _____

Date Received _____

Date Microfilmed _____

Treasurer's Receipt No. _____

Number of Included Sheets _____

AFFIX YOUR LAND SURVEYOR SEAL. CORNER CODE T 23