

U.S. PUBLIC LAND SURVEY MONUMENT RECORD

For Public Land Survey Corners in the

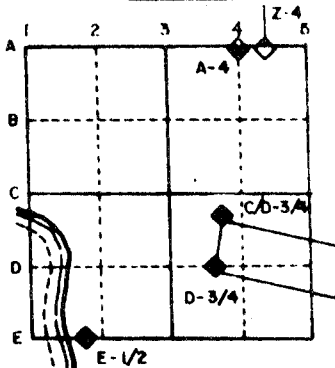
T. 2 N., R. 12 E.

CORNER CODE INDEX

	1	2	3	4	5	6	7	8	9	10	11	12	13	14	15	16	17	18	19	20	21	22	23	24	25
A																									
B																									
C	6																								
D		5																							
E			4																						
F				3																					
G					2																				
H																									
I	7																								
J		8																							
K			9																						
L				10																					
M					11																				
N						12																			
O							13																		
P	18																								
Q		17																							
R			16																						
S				15																					
T					14																				
U						13																			
V							12																		
W								11																	
X									10																
Y										9															
Z											8														

PLACE MONUMENT SYMBOL (◆) AT PROPER LOCATION ON ABOVE INDEX

EXAMPLE



ROCK TWP
ROCK COUNTY WI

IF AVAILABLE
STATE PLANE COORDINATES

North (Y) _____ Eleve. (Z) _____
 East (X) _____ Zone _____
 Hor. Datum _____ Vert. Datum _____

(a) ◆ CORNER MONUMENT

○ WITNESS MONUMENT

SEE SHEET 2

BEARINGS ARE BASED ON:

FIELD BOOK 2 PAGE # 38

SHOW A PLAN VIEW DRAWING DEPICTING THE CORNER MONUMENT AND SURROUNDING PHYSICAL FEATURES, INCLUDING THE EXCAVATION AREA AND DEPTH. THE CORNER MONUMENT SHALL HAVE THE FOLLOWING CHARACTERISTICS: 1) HAVE AT LEAST TWO PREDETERMINED BREAK-OFF POINTS. 2) IF BROKEN, LEAVE A PERMANENTLY MAGNETIZED REMNANT AT THE ORIGINAL POINT. 3) MUST BE EXTENDABLE. 4) THE CAP IS INSCRIBED: ROCK COUNTY SURVEY MONUMENT - PENALTY FOR DISTURBING MARKER. 5) OR AN EXISTING CUT LIMESTONE. AN IRON PIPE 1 1/2" x 4'0" (MINIMUM) MAY BE USED IN AREAS WHERE GROUND WATER IS WITHIN ONE FOOT OF THE SURFACE. IF THE CORNER IS OCCUPIED BY AN IMPROVEMENT (MANHOLE, BURIED CABLE, ETC.) ANY DURABLE, DISTINCT MONUMENT MAY BE USED. CORNERS SHALL BE REFERENCED WITH AT LEAST 4 DURABLE WITNESS MONUMENTS. WITNESS MONUMENTS SHALL BE MADE OF CONCRETE, NATURAL STONE, IRON OR OTHER EQUALLY DURABLE MATERIAL, EXCEPT WOOD. DESCRIBE THE CORNER AND THE WITNESS MONUMENTS.

CORNER CODE:
2 23

(b.) Describe any record evidence, monument evidence, occupational evidence, testimonial evidence or any other material evidence you considered, and whether the monument was found or placed.

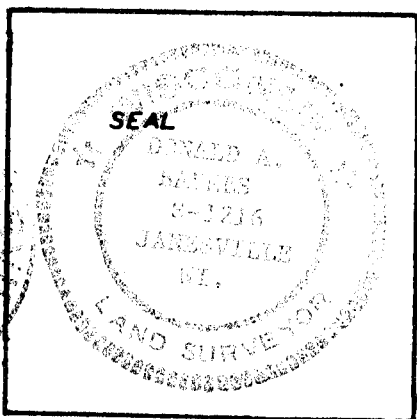
SEE SHEET 2

(c.) Was the corner restored through acceptance of (1) an obliterated evidence location, or, (2) a found perpetuated location?

(d.) Describe any material discrepancy between the location of the corner as restored or reestablished and the location of that corner as previously restored or reestablished by distance and direction. Show the discrepancy on the plan view drawing under (a), above. Show the distances between the corner as previously restored or reestablished and (1) the corner as restored or reestablished, and (2) to at least 4 of the witness monuments shown on the drawing in (a), above.

(e.) Was the corner reestablished through lost corner proportionate methods? If so, show the method, including the directions and distances to other public land survey corners used as evidence or used for proportioning in determining the corner location.

I, Donald Barnes, hereby certify that the corner points as identified by the corner code index were, in a field survey on January 20 1989 established, re-established, monumented, re-monumented, recovered or restored as expressed below and in conformance with the regulations and rules as required in the current manual of survey instructions of the United States Department of Interior, Bureau of Land Management.



COUNTY SURVEYOR FILING DATA

Date of Computer Entry _____

Date Received _____

Date Microfilmed _____

Treasurer's Receipt No. _____

Number of Included Sheets 1

AFFIX YOUR LAND SURVEYOR SEAL. CORNER CODE 223

U.S. PUBLIC LAND SURVEY MONUMENT RECORD

For Public Land Survey Corners in the

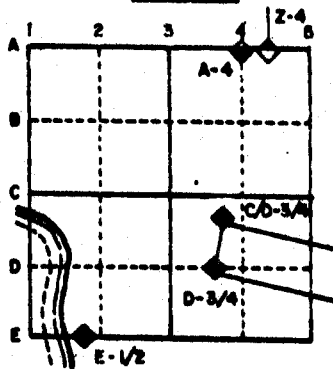
T. 2 N., R. 12 E.

CORNER CODE INDEX

	1	2	3	4	5	6	7	8	9	10	11	12	13	14	15	16	17	18	19	20	21	22	23	24	25
A																									
B	6																								
C		5																							
D			4																						
E				3																					
F					2																				
G																									
H	7																								
I		6																							
J			5																						
K				4																					
L					3																				
M	8																								
N		7																							
O			6																						
P				5																					
Q					4																				
R						3																			
S							2																		
T	9																								
U		8																							
V			7																						
W				6																					
X					5																				
Y						4																			
Z							3																		

PLACE MONUMENT SYMBOL (◆) AT PROPER LOCATION ON ABOVE INDEX

EXAMPLE



Rock TWP
ROCK COUNTY WI

IF AVAILABLE STATE PLANE COORDINATES

North (Y) _____ Eleve. (Z) _____
 East (X) _____ Zone _____
 Hor. Datum _____ Vert. Datum _____

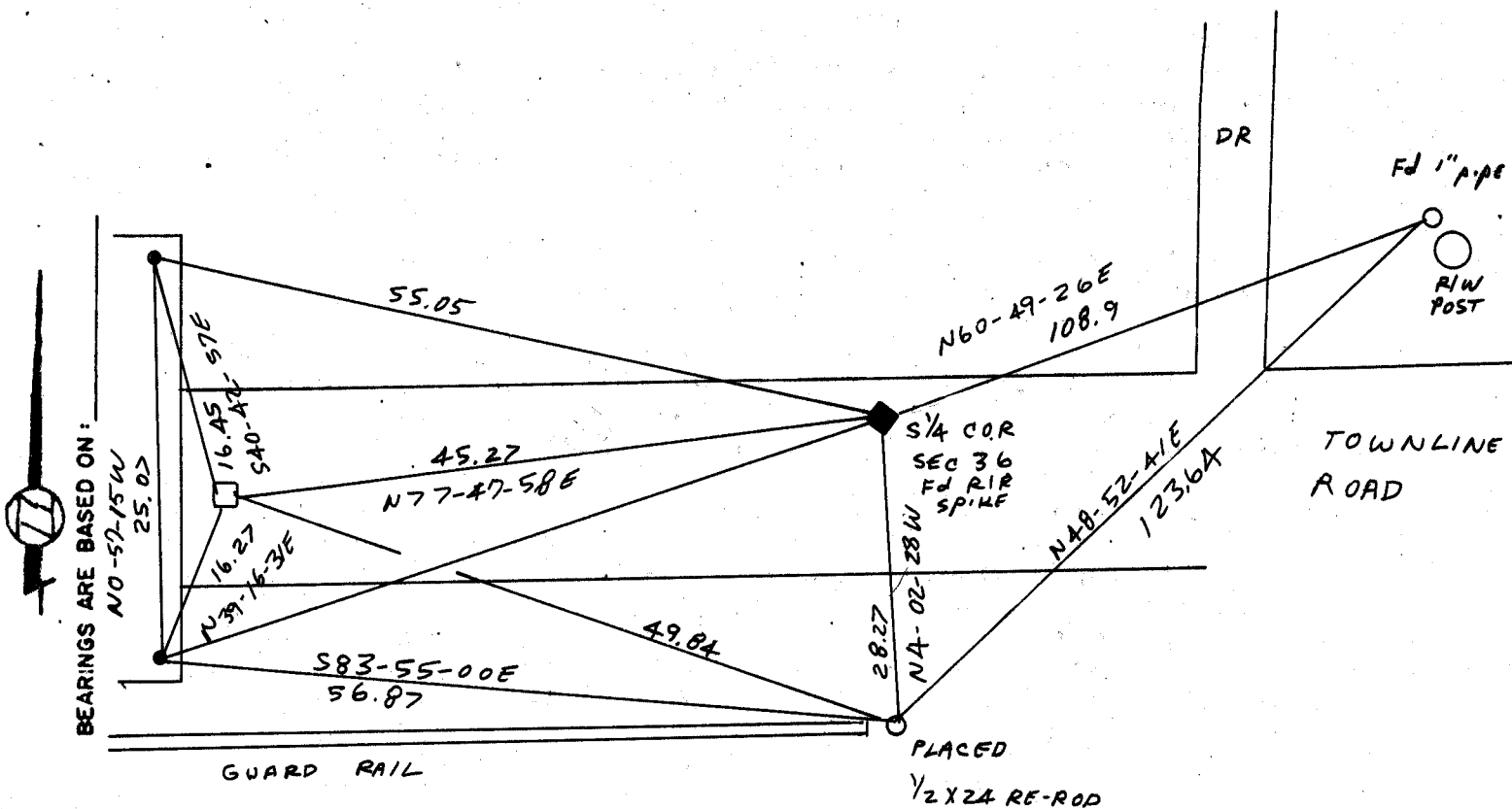
d.)

◆ CORNER MONUMENT
R/R SPIKE

○ WITNESS MONUMENT

● Fd CUT "X" IN CONCRETE

□ Fd PIPE IN MON BOX



REPLACED R/R SPIKE WITH
ALUMINUM MONUMENT,
NO. 28, 1989

FIELD BOOK 2 PG 38
3 PG 2

MICROFILMED

SHEET 2 OF 2

CORNER CODE: 2 23

(B) Describe any record evidence, monument evidence, occupational evidence, testimonial evidence or any other material evidence you considered, and whether the monument was found or placed.

- 1873 LEE VOL 2 PG 101 FOUND REMAINS OF OLD STAKE. SET CEDAR STAKE.
- 1876 RUGER VOL 2 PG 216 FOUND STAKE. PUT IN ITS PLACE LIMESTONE 15 x 8 X 2 1/2" & LIMESTONE ON NORTH & SOUTH SIDES. SHOWS A DISTANCE OF 2596.11' TO THE SE CORNER.
- 1945 SUNNY SHOWS A DISTANCE OF 285.0 TO THE CENTER OF U.S.H. 51 BUT STATES NOTHING ABOUT CORNER.
- 1948 SHIMEALL FIELD NOTES. DUG A 4 x 8 HOLE 7' DEEP AND FOUND NOTHING. HE ESTABLISHED THE CORNER AT THE INTERSECTION OF THE N/S CENTER LINE OF SECTION 36 AND THE TOWN LINE. HE PLACED A 2 X 36 GAS PIPE. HIS FIELD NOTES SHOWS AN ANGLE 87-15 WITH THE EAST LINE OF THE SE 1/4 OF SECTION 36 AND SHOWS THAT SUNNY'S ANGLE WAS 87-00. HE SHOWS A DISTANCE OF 2594 TO THE SE CORNER OF SECTION 36.
- 195? BATTERMAN VOL 3 PG 527 SHOWS THE NORTH QUARTER CORNER OF SECTION 1 AS A RR SPIKE AND A DISTANCE OF 2637.97 TO THE SE CORNER OF SECTION 36. ALSO SHOWS TIES BUT DOES NOT STATE HOW THE CORNER WAS ESTABLISHED.
- 1965 D.O.T. PRESERVATION OF LANDMARK FORM. AT THE NORTH QUARTER CORNER OF SECTION 1 THEY SHOW A 1" PIPE IN A MONUMENT BOX WITH REFERENCE TIES.
- 1971 LEE CSM VOL 2 PG 41 SHOWS THE NORTH QUARTER CORNER OF SECTION 1 AND A DISTANCE OF 270.14 TO THE CENTER OF U.S.H. 51.
- 1977 LEE CSM VOL 6 PG 256 SHOWS THE CORNER ON THE SURVEY.
- 1979 BARNES VOL 5 PG 576 SHOWS A DISTANCE OF 2638.43 FROM THE NORTH QUARTER CORNER OF SECTION 1 TO THE SE CORNER OF SECTION 36.
- 1984 D.O.T. PROJECT 5351-00-21 SHOWS A 1" PIPE AND THE COORDINATES 214,533.21 AND 2,263,713.85.
- 1985 COMBS PLAT OF SURVEY. PLACED A R/R SPIKE AT THE LOCATION THAT SHIMEALL ESTABLISHED.
- 1986 BARNES VOL 6 PG 335 SHOWS RECORD DISTANCES IN SECTION 36 AND A TRUE AND CORRECT COPY OF SHIMEALL.'S 1948 FIELD NOTES.

(c) Was the corner restored through acceptance of (1) an obliterated evidence location, or, (2) a found perpetuated location?

THE CORNER WAS ACCEPTED THROUGH ACCEPTANCE OF FOUND PERPETUATED LOCATION. I ACCEPTED THE CORNER AS ESTABLISHED BY SHIMEALL. THIS POSITION IS IN HARMONY WITH RUGER'S DISTANCES.

(d) Describe any material discrepancy between the location of the corner as restored or reestablished and the location of that corner as previously restored or reestablished by distance and direction. Show the discrepancy on the plan view drawing under (a) above. Show the distances between the corner as previously restored or reestablished and (1) the corner as restored or reestablished, and (2) to at least 4 of the witness monuments shown on the drawing in (a), above.
THERE IS A DISCREPANCY. SEE SKETCH.

