

U.S. PUBLIC LAND SURVEY MONUMENT RECORD

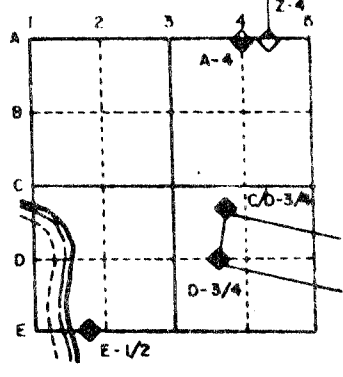
For Public Land Survey Corners in the
T. 2 N., R. 12 E.

CORNER CODE INDEX

	1	2	3	4	5	6	7	8	9	10	11	12	13	14	15	16	17	18	19	20	21	22	23	24	25
A																									
B																									
C	6																								
D																									
E																									
F																									
G	7																								
H																									
I																									
J																									
K																									
L	18																								
M																									
N																									
O																									
P	19																								
Q																									
R																									
S																									
T	30																								
U																									
V																									
W																									
X	31																								
Y																									
Z																									

PLACE MONUMENT SYMBOL (⊕) AT PROPER LOCATION ON ABOVE INDEX

EXAMPLE



Rock TWP
Rock County WI

IF AVAILABLE
STATE PLANE COORDINATES

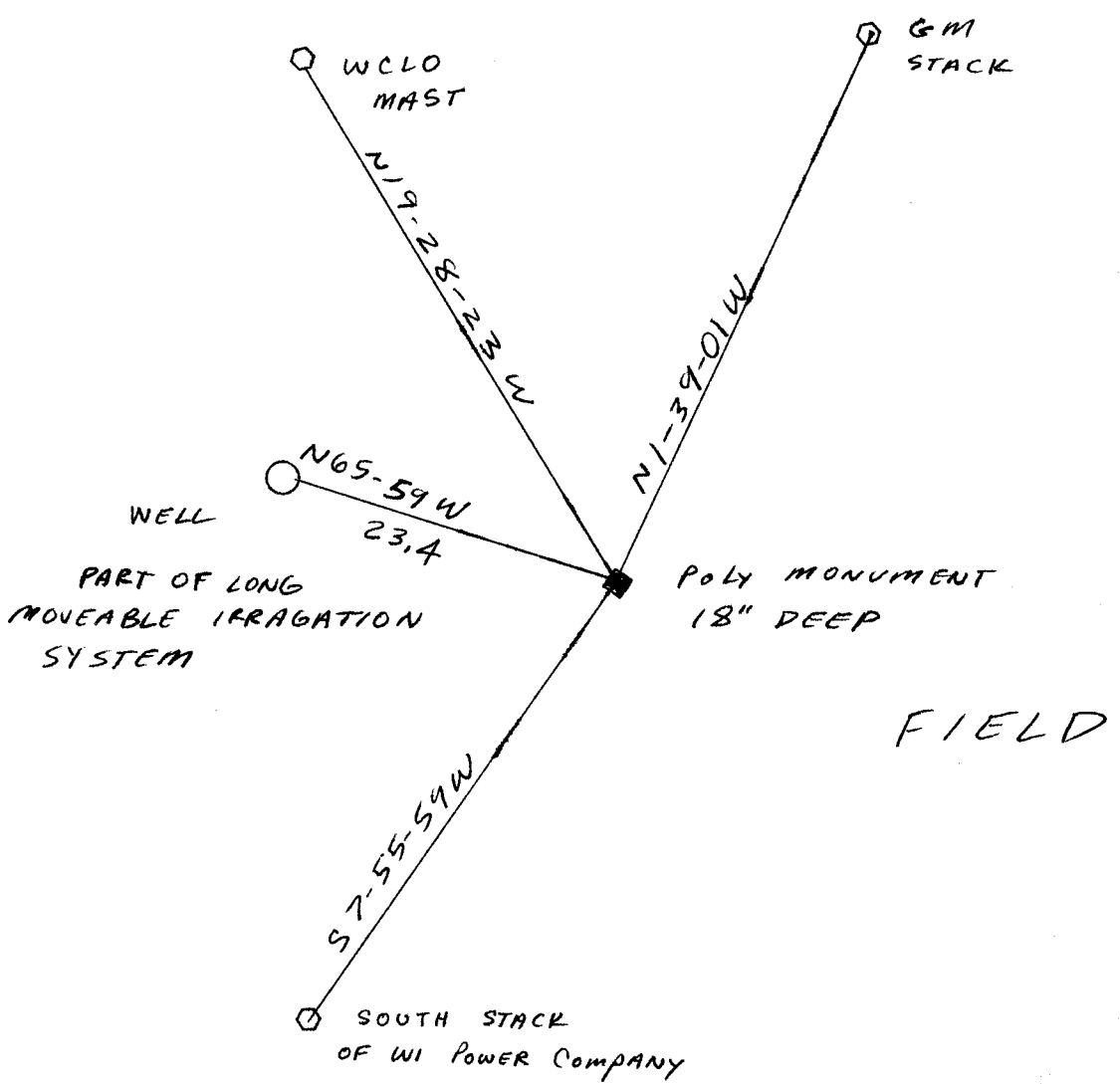
North (Y) _____ Eleve. (Z) _____
 East (X) _____ Zone _____
 Hor. Datum _____ Vert. Datum _____

(0.)

⊕ CORNER MONUMENT

○ WITNESS MONUMENT

BEARINGS ARE BASED ON STATE PLANE



FIELD BOOK 2 PAGE # 37

SHOW A PLAN VIEW DRAWING DEPICTING THE CORNER MONUMENT AND SURROUNDING PHYSICAL FEATURES, INCLUDING THE EXCAVATION AREA AND DEPTH. THE CORNER MONUMENT SHALL HAVE THE FOLLOWING CHARACTERISTICS: 1) HAVE AT LEAST TWO PREDETERMINED BREAK-OFF POINTS. 2) IF BROKEN, LEAVE A PERMANENTLY MAGNETIZED REMNANT AT THE ORIGINAL POINT. 3) MUST BE EXTENDABLE. 4) THE CAP IS INSCRIBED ROCK COUNTY SURVEY MONUMENT - PENALTY FOR DISTURBING MARKER. 5) OR AN EXISTING CUT LIMESTONE. AN IRON PIPE 1 1/2" x 4'0" (MINIMUM) MAY BE USED IN AREAS WHERE GROUND WATER IS WITHIN ONE FOOT OF THE SURFACE. IF THE CORNER IS OCCUPIED BY AN IMPROVEMENT (MANHOLE, BURIED CABLE, ETC.) ANY DURABLE, DISTINCT MONUMENT MAY BE USED. CORNERS SHALL BE REFERENCED WITH AT LEAST 4 DURABLE WITNESS MONUMENTS. WITNESS MONUMENTS SHALL BE MADE OF CONCRETE, NATURAL STONE, IRON OR OTHER EQUALLY DURABLE MATERIAL, EXCEPT WOOD. DESCRIBE THE CORNER AND THE WITNESS MONUMENTS.

CORNER CODE: R 23

(b.) Describe any record evidence, monument evidence, occupational evidence, testimonial evidence or any other material evidence you considered, and whether the monument was found or placed.

SEE ENCLOSED SHEET

(c.) Was the corner restored through acceptance of (1) an obliterated evidence location, or, (2) a found perpetuated location?

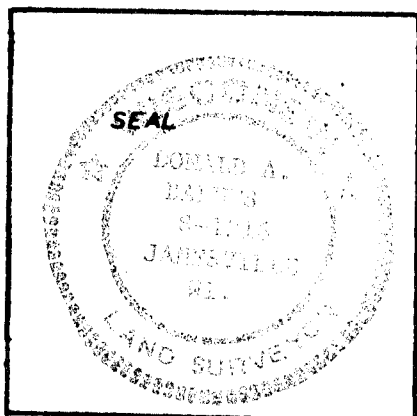
SEE ENCLOSED SHEET

(d.) Describe any material discrepancy between the location of the corner as restored or reestablished and the location of that corner as previously restored or reestablished by distance and direction. Show the discrepancy on the plan view drawing under (a), above. Show the distances between the corner as previously restored or reestablished and (1) the corner as restored or reestablished, and (2) to at least 4 of the witness monuments shown on the drawing in (a), above.

(e.) Was the corner reestablished through lost corner proportionate methods? If so, show the method, including the directions and distances to other public land survey corners used as evidence or used for proportioning in determining the corner location.

NO

I, Donald Barnes, hereby certify that the corner points as identified by the corner code index were, in a field survey on JANUARY 23 1989, established, re-established, monumented, re-monumented, recovered or restored as expressed below and in conformance with the regulations and rules as required in the current manual of survey instructions of the United States Department of Interior, Bureau of Land Management.



COUNTY SURVEYOR FILING DATA

Date of Computer Entry _____

Date Received _____

Date Microfilmed _____

Treasurer's Receipt No. _____

Number of Included Sheets 1

AFFIX YOUR LAND SURVEYOR SEAL. CORNER CODE R23

U.S. PUBLIC LAND SURVEY MONUMENT RECORD

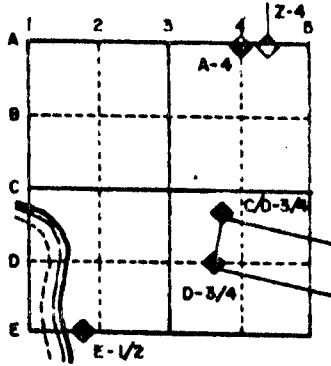
For Public Land Survey Corners in the
T. 2 N., R. 12 E.

CORNER CODE INDEX

	1	2	3	4	5	6	7	8	9	10	11	12	13	14	15	16	17	18	19	20	21	22	23	24	25
A																									
B																									
C	6																								
D		5																							
E			4																						
F				3																					
G					2																				
H																									
I																									
J																									
K																									
L																									
M																									
N																									
O																									
P																									
Q																									
R																									
S																									
T																									
U																									
V																									
W																									
X																									
Y																									
Z																									

PLACE MONUMENT SYMBOL (◆) AT PROPER LOCATION ON ABOVE INDEX

EXAMPLE



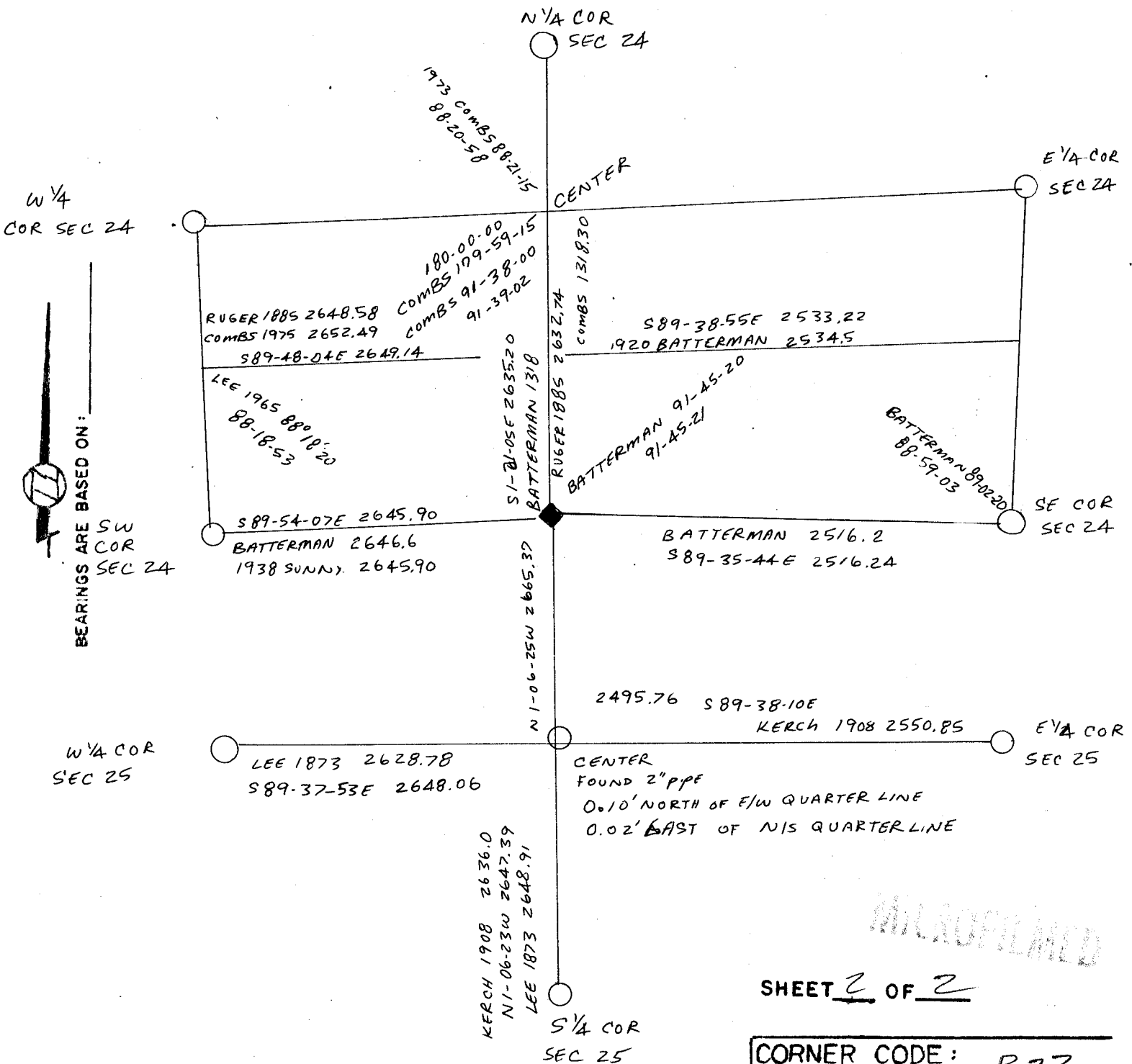
ROCK TWP
ROCK COUNTY WI

IF AVAILABLE STATE PLANE COORDINATES

North (Y) _____ Eleve. (Z) _____
 East (X) _____ Zone _____
 Hor. Datum _____ Vert. Datum _____

a.)

◆ CORNER MONUMENT ○ WITNESS MONUMENT



SHEET 2 OF 2

CORNER CODE: R23

(B) Describe any record evidence, monument, evidence, occupational evidence, testimonial evidence or any other material evidence you considered, and whether the monument was found or placed.

- 1873 LEE VOL 2 PG 95 FOUND OLD STAKE AT CROSSING OF FENCES.
- 1885 RUGER VOL 2 PG 279 FOUND STAKE SURROUNDED BY 4 LIMESTONES & ON TOP OF LIMESTONE 16 1/2" X 15" X 9 1/2".
- 1920 BATTERMAN VOL 3 PG 95 SHOWS A GAS PIPE. SHOWS AN ANGLE TO THE SE CORNER AND CENTER OF SECTION 24 WITH A DISTANCE TO BOTH.
- 1938 SUNNY-PLAT OF SURVEY- SHOWS A DISTANCE OF 2645.9 TO THE SW CORNER OF SECTION 24.
- 1961 BATTERMAN-PLAT OF SURVEY-SHOWS A DISTANCE OF 2646.6 TO THE SW CORNER OF SECTION 24.
- 1965 LEE-PLAT OF SURVEY-LEGEND SHOWS THAT AN IRON PIPE WAS FOUND.
- 1975 COMBS-PLAT OF SURVEY-SHOWS A DISTANCE FROM THE CENTER OF SECTION 24 TO THE SOUTH QUARTER CORNER OF SECTION 24 AND THE ANGLE.

ALL FENCES AND CORNER WERE REMOVED. AREA IS NOW A FARM FIELD WITH A LARGE IRRIGATION SYSTEM WELL CLOSE TO THE CORNER. I PLACED THE CORNER IN HARMONY WITH RECORD DISTANCES AND ANGLES. PLACED A POLY MONUMENT 15" DEEP.

(c) Was the corner restored through acceptance of (1) an obliterated evidence location, or, (2) a found perpetuated location?

THE CORNER WAS RESTORED THROUGH ACCEPTANCE OF OBLITERATED EVIDENCE LOCATION.

(D) Describe any material discrepancy between the location of the corner as restored or reestablished and the location of that corner as previously restored or reestablished by distance and direction. Show the discrepancy in the plan view drawing under (a), above. Show the distances between the corner as previously restored or reestablished and (1) the corner as restored or reestablished, and (2) to at least 4 of the witness monuments shown on the drawing in (a), above.

THERE WERE NO DISCREPANCIES

