

U.S. PUBLIC LAND SURVEY MONUMENT RECORD

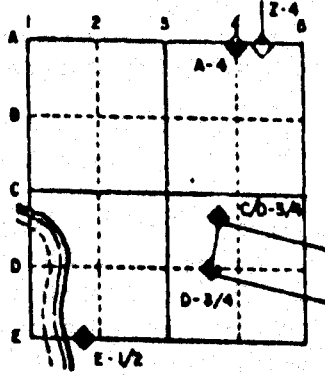
For Public Land Survey Corners in the
T. 2N., R. 12E.

CORNER CODE INDEX

	1	2	3	4	5	6	7	8	9	10	11	12	13	14	15	16	17	18	19	20	21	22	23	24	25
A																									
B																									
C	6																								
D																									
E																									
F																									
G	7	8	9	10	11	12																			
H																									
I																									
J																									
K																									
L	16	17	18	19	20	21	22	23	24																
M																									
N																									
O																									
P	19	20	21	22	23	24																			
Q																									
R																									
S	30	29	28	27	26	25																			
T																									
U																									
V																									
W																									
X																									
Y	31	32	33	34	35	36																			
Z																									

PLACE MONUMENT SYMBOL (◆) AT PROPER LOCATION ON ABOVE INDEX

EXAMPLE



ROCK TWP
ROCK COUNTY WI

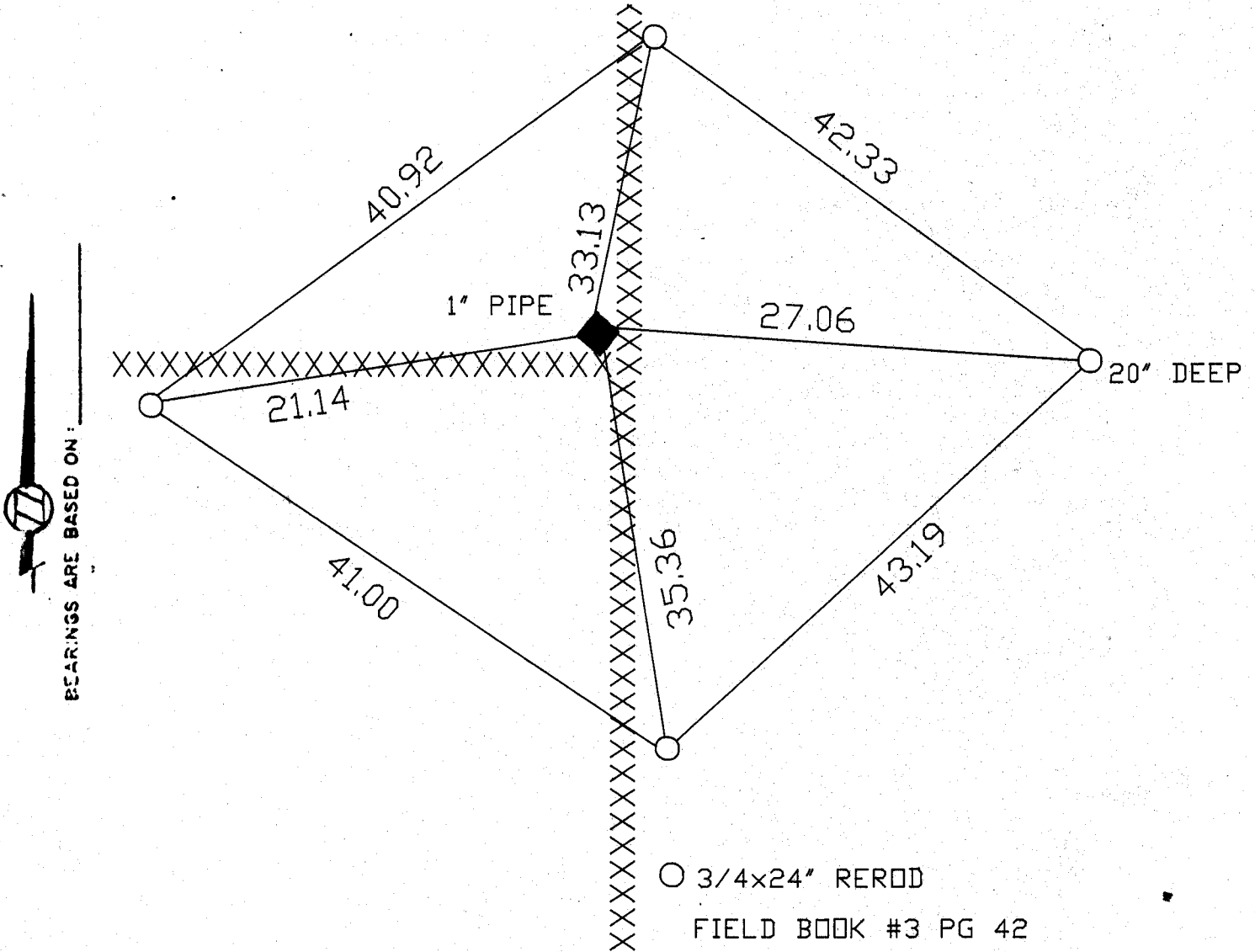
IF AVAILABLE STATE PLANE COORDINATES

North (Y) _____ Eleve. (Z) _____
 East (X) _____ Zone _____
 Hor. Datum _____ Vert. Datum _____

◆ CORNER MONUMENT

○ WITNESS MONUMENT

Replaced with Poly Monument



BEARINGS ARE BASED ON:

○ 3/4x24" REROD

FIELD BOOK #3 PG 42

MICROFILMED

SHEET ___ OF ___

CORNER CODE: J 23

(B) Describe any record evidence, monument evidence, occupational evidence, testimonial evidence or any other material evidence you considered, and whether the monument was found or placed.

1869 LEE VOL 1 PG 346 SET OAK STAKE SURROUNDED BY 3 HARD HEADS. FOUND OLD STAKE. SHOWS A DISTANCE OF 2647.92' TO CENTER OF SECTION 13.

1869 LEE VOL 2 PG 4. FOUND CORNER SET BY SELF. SHOWS A DISTANCE OF 2564.10' TO SE CORNER OF SECTION 12.

1870 RUGER VOL 2 PG 41 FOUND CORNER ESTABLISHED BY LEE. STAKE SURROUNDED BY 3 HARD HEAD STONES. SHOWS A DISTANCE OF 2633.40. TO CENTER OF SECTION 12.

1877 RUGER VOL 2 PG 237. FOUND CORNER SET BY LOCKE. SHOWS A DISTANCE OF 2560.14' TO THE SE CORNER OF SECTION 12.

1964 KNOERR PLAT BOOK #22 PG 30 "BURBANK PARK" PLACED PIPE AT CORNER. SHOWS 2657.65 TO SW CORNER OF SECTION 12.

1989 BARNES VOL 6 PG 395. SHOWS LEE'S 1869 DISTANCE OF 2647.92' TO THE CENTER OF SECTION 13.

FOUND 1" IRON PIPE.

C) Was the corner restored through acceptance of (1) an obliterated evidence location, or, (2) a found perpetuated location?

ACCEPTED FOUND PERPETUATED LOCATION.

D) Describe any material discrepancy between the location of the corner as restored or reestablished and the location of that corner as previously restored or reestablished by distance and direction. Show the discrepancy on the plan view drawing under (a), above. Show the distances between the corner as previously restored or reestablished and (1) the corner as restored or reestablished, and (2) to at least 4 of the witness monuments shown on the drawing in (a), above.

(E) Was the corner reestablished through lost corner proportionate methods? If so, show the method, including the directions and distances to other public land survey corners used as evidence or used for proportioning the corner location.

I, Donald Barnes, hereby certify that the corner points as identified by the corner code index were, in a field survey on, November 29, 1990, established, re-established, monumented, re-monumented, recovered or restored as expressed below and in conformance with the regulations and rules as required in the current manual of survey instructions of the United States Department of Interior, Bureau of Land Management.


seal

COUNTY SURVEYOR FILING DATA

Date of computer entry _____

Date microfilmed _____

Number of included sheets _____

CORNER CODE

AFFIX YOUR LAND SURVEYOR SEAL

J 23