

U.S. PUBLIC LAND SURVEY MONUMENT RECORD

For Public Land Survey Corners in the

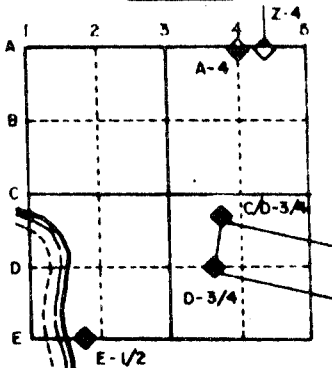
T. 2 N., R. 12 E

CORNER CODE INDEX

	2	3	4	5	6	7	8	9	10	11	12	13	14	15	16	17	18	19	20	21	22	23	24	25	
A																									
B																									
C	6	5	4	3	2																				
D																									
E																									
F																									
G	7	8	9	10	11	12																			
H																									
I																									
J																									
K	18	17	16	15	14	13																			
L																									
M																									
N																									
O																									
P	19	20	21	22	23	24																			
Q																									
R																									
S																									
T	30	29	28	27	26	25																			
U																									
V																									
W																									
X	31	32	33	34	35	36																			
Y																									
Z																									

PLACE MONUMENT SYMBOL (◆) AT PROPER LOCATION ON ABOVE INDEX

EXAMPLE



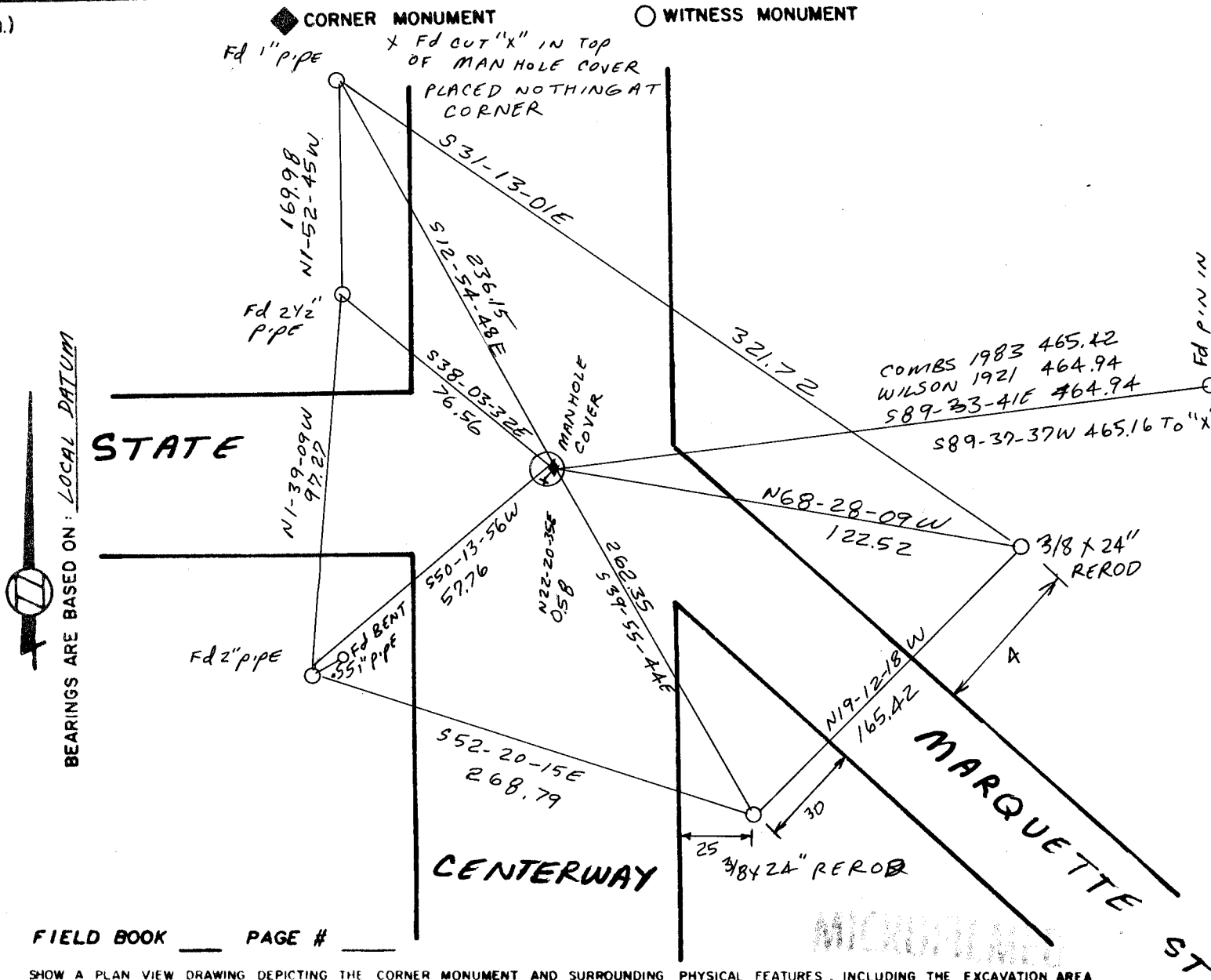
ROCK TWP
ROCK COUNTY WI

IF AVAILABLE
STATE PLANE COORDINATES

North (Y) _____ Eleve. (Z) _____
 East (X) _____ Zone _____
 Hor. Datum _____ Vert. Datum _____

(a)

◆ CORNER MONUMENT ○ WITNESS MONUMENT



SHOW A PLAN VIEW DRAWING DEPICTING THE CORNER MONUMENT AND SURROUNDING PHYSICAL FEATURES, INCLUDING THE EXCAVATION AREA AND DEPTH. THE CORNER MONUMENT SHALL HAVE THE FOLLOWING CHARACTERISTICS: 1) HAVE AT LEAST TWO PREDETERMINED BREAK-OFF POINTS. 2) IF BROKEN, LEAVE A PERMANENTLY MAGNETIZED REMNANT AT THE ORIGINAL POINT. 3) MUST BE EXTENDABLE. 4) THE CAP IS INSCRIBED ROCK COUNTY SURVEY MONUMENT - PENALTY FOR DISTURBING MARKER. 5) OR AN EXISTING CUT LIMESTONE. AN IRON PIPE 1 1/2" x 4'0" (MINIMUM) MAY BE USED IN AREAS WHERE GROUND WATER IS WITHIN ONE FOOT OF THE SURFACE. IF THE CORNER IS OCCUPIED BY AN IMPROVEMENT (MANHOLE, BURIED CABLE, ETC.) ANY DURABLE, DISTINCT MONUMENT MAY BE USED. CORNERS SHALL BE REFERENCED WITH AT LEAST 4 DURABLE WITNESS MONUMENTS. WITNESS MONUMENTS SHALL BE MADE OF CONCRETE, NATURAL STONE, IRON OR OTHER EQUALLY DURABLE MATERIAL, EXCEPT WOOD. DESCRIBE THE CORNER AND THE WITNESS MONUMENTS.

CORNER CODE:
C 21

(b.) Describe any record evidence, monument evidence, occupational evidence, testimonial evidence or any other material evidence you considered, and whether the monument was found or placed.

SEE OTHER SHEETS

(c.) Was the corner restored through acceptance of (1) an obliterated evidence location, or, (2) a found perpetuated location?

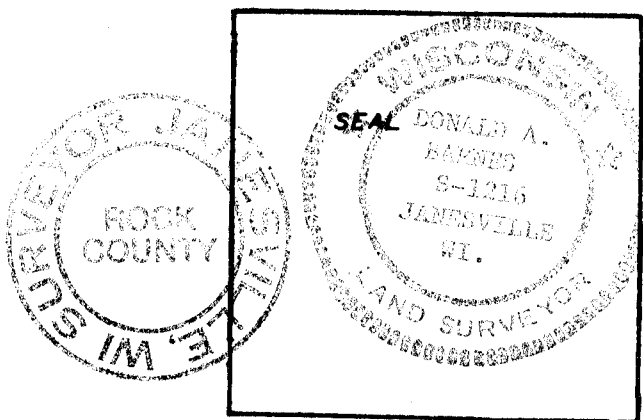
ACCEPTED OBLITERATED EVIDENCE LOCATION.

(d.) Describe any material discrepancy between the location of the corner as restored or reestablished and the location of that corner as previously restored or reestablished by distance and direction. Show the discrepancy on the plan view drawing under (a), above. Show the distances between the corner as previously restored or reestablished and (1) the corner as restored or reestablished, and (2) to at least 4 of the witness monuments shown on the drawing in (a), above.

SEE DRAWING & OTHER SHEETS

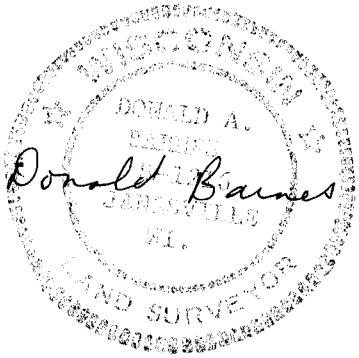
(e.) Was the corner reestablished through lost corner proportionate methods? If so, show the method, including the directions and distances to other public land survey corners used as evidence or used for proportioning in determining the corner location.

I, Donald Barnes, hereby certify that the corner points as identified by the corner code index were, in a field survey on May 11 1989, established, re-established, monumented, re-monumented, recovered or restored as expressed below and in conformance with the regulations and rules as required in the current manual of survey instructions of the United States Department of Interior, Bureau of Land Management.



COUNTY SURVEYOR FILING DATA
Date of Computer Entry _____
Date Received _____
Date Microfilmed _____
Treasurer's Receipt No. _____
Number of Included Sheets 5

AFFIX YOUR LAND SURVEYOR SEAL. CORNER CODE C 21

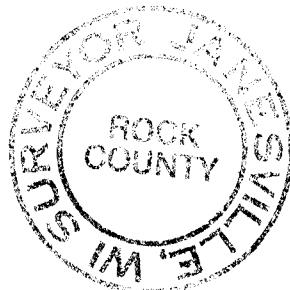
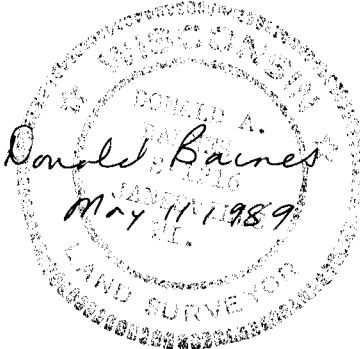


May 11 1989



LOCAL COORDINATES	POINT	DESCRIPTION
244,125.17;1,260,593.61	32	PLACED 3/8" REROD
243,635.20;1,260,581.45	519	PLACED NOTHING $\frac{1}{4}$ CORNER
243,434.02;1,260,749.83	1013	FD PIPE
243,187.94;1,261,008.43	1014	FD BENT 1" PIPE
243,842.36;1,260,608.18	1020	FD PIPE
243,865.37;1,260,528.67	1021	FD PIPE
244,010.54;1,260,524.17	1022	FD PIPE
243,511.83;1,260,539.48	1023	FD 1 1/2" PIPE
243,389.78;1,260,542.80	1024	FD SPIKE
243,189.78;1,260,549.09	1025	FD 1" PIPE
242,981.97;1,260,553.45	1026	FD 1" PIPE
242,931.98;1,260,554.74	1027	FD 1 1/2" PIPE
242,929.43;1,260,644.92	1028	FD PIPE
242,994.17;1,260,824.49	1029	FD 2" PIPE
242,322.24;1,260,570.82	1030	FD 2" PIPE
241,875.05;1,260,582.36	1031	FD 1" PIPE
242,925.45;1,260,302.91	1032	FD PIN
243,631.64;1,261,046.37	1060	FD PIN IN CONCRETE MON
243,567.39;1,259,562.95	1061	FD 2 1/2" PIPE
243,569.22;1,259,622.92	1062	FD BOLT
243,635.37;1,259,560.84	1066	FD 1 1/2" PIPE
242,020.13;1,260,580.03	1147	FD BENT PIPE
242,039.67;1,260,668.26	1148	FD PIPE
244,118.92;1,260,538.69	1153	CURB & PVMT @ WEST SIDE
244,118.21;1,260,600.58	1154	FD BENT PIPE
244,163.86;1,260,599.12	1155	DISK ON TOP OF BRIDGE
243,695.48;1,260,534.25	1156	FD 2 1/2" PIPE
243,598.25;1,260,537.05	1157	FD 2" PIPE
243,634.66;1,260,581.23	1519	FD CUT "X" ON MANHOLE COVER AS PLACED BY RDN COMBS
243,567.90;1,259,579.68	2061	ON LINE BETWEEN 1061 & 1062 @ REC DIST
243,602.89;1,259,578.98	2062	COMPUTED @ REC DIST & AT RT ANGLE
243,592.29;1,260,348.39	3004	FD 2" PIPE
243,588.06;1,260,225.45	3006	FD 2" PIPE
243,657.88;1,260,223.39	3007	FD 1" PIPE
243,659.92;1,260,283.33	3008	FD 1" PIPE
243,590.02;1,260,285.33	3010	FD 2" PIPE
242,315.47;1,260,318.78	3015	FD 1 1/4" PIPE
242,382.24;1,260,569.28	3016	FD 1" PIPE
242,323.45;1,260,615.80	3018	COMPUTED POINT BY PROJECTING PT 3015 & 1030 AT REC DISTANCE
243,589.04;1,260,255.39	3031	MID PT OF 3006 & 3010
243,623.97;1,260,254.37	3032	MID PT OF 3031 & 3039
243,668.68;1,260,535.17	11156	INTERSECTED REC DIST FROM 1021 & 3008
243,598.65;1,260,537.20	11578	COMPUTED POINT. REC DIST FROM 1023 ON LINE WITH 1023 &
243,598.75;1,260,537.28	11579	FD LEANING PIPE. PLUMBED PIPE

- 1865 LOCKE VOL 1 PG 246 FOUND CORNER PRESERVED. SET 3 LIMESTONES WITH CENTER ONE MARKING CORNER. SHOWS A DISTANCE OF 2649.57 TO THE SE CORNER OF SECTION 2. ALSO SHOWS DISTANCES TO STAKES ON THE SOUTH SIDE OF THE HIGHWAY THAT IS THE WEST.
- 1869 RUGER VOL 2 PG 15 FOUND STUMP OF SE BEARING TREE ALSO FOUND LIMESTONE WITH LIMESTONES ON SIDES ON CORNER. SHOWS A DISTANCE OF 2649.9 TO THE SE CORNER OF SECTION 2 AND A DISTANCE OF 5327.85 TO THE WEST QUARTER CORNER OF SECTION 2 AS WELL AS DISTANCES TO CORNERS ALONG THE E/W QUARTER LINE. THE ORIGINAL GOVERNMENT SURVEY DID NOT ESTABLISH THE WEST QUARTER AND RUGER SHOWS THE CORNER IN ROCK RIVER.
- 1877 RUGER VOL 2 PG 40 SEE PLAT OF SECTION 2 FOUND 3 LIMESTONES SET BY LOCKE PUT TOP OF THEM LIMESTONE 14X7X6. PLACED STONES AND PINS ALONG THE SECTION LINE TO THE SOUTH AND NORTH AND THE E/W QUARTER LINE. SHOWS A DISTANCE OF 5197.17 TO THE EAST QUARTER CORNER OF SECTION 1 AND 2649.57.
- 1882 RUGER VOL 2 PG 404 FOUND LIMESTONE ON TOP OF IT LIMESTONE 12X8X2 1/2 AND SURROUNDED BY 4 LIMESTONES. ESTABLISHED THE E/W QUARTER LINE OF SECTION 1 AND PLACED STONES AND RODS ALONG IT. SHOWS A DISTANCE OF 2645.28 TO THE CENTER OF SECTION 1 AND 5213.34 TO THE EAST QUARTER CORNER OF SECTION 1.
- 1883 RUGER VOL 2 PG 379 FOUND CORNER SET BY SELF. STATES THAT AT THE NW CORNER OF THE E 1/2 OF THE SE QUARTER OF SECTION 2 HE FOUND A LIMESTONE AND REPLACED IT WITH A LIMESTONE 11X6X5.
- 1884 RUGER VOL 2 PG 378 FOUND LIMESTONE - SET ON TOP OF IT LIMESTONE 22X15X6 POINT UP AND SURROUNDED IT BY 4 LIMESTONES.
- 1877 RUGER SHOWS A DISTANCE OF 2637.03 TO CENTER OF SECTION 1 & 2649.57 TO SW COR OF SEC 1
- 1908 KERCH SHOWS A DISTANCE OF 2657.9 TO THE SW CORNER OF SECTION 1
- 1916 KERCH'S FIELD NOTES STATES THAT HE FOUND A STONE AT THE CORNER & THE DISTANCES TO GAS PIPES AT THE CENTER OF STREET INTERSECTIONS ARE AS FOLLOWS:
- | | |
|------------|---------|
| WASHINGTON | 629.74 |
| TERRACE | 660.57 |
| PEARL | 1002.84 |
- HE ALSO SHOWS A DISTANCE OF 2665.1 TO THE N/S CENTER LINE OF SECTION 2, AT THE INTERSECTION OF THE CENTERLINE OF STATE AND THE N/S QUARTER LINE HE SHOWS AN ANGLE OF 90-41-38. HE ALSO SHOWS AN ANGLE RIGHT FROM THE 1/4 CORNER AT PEARL TO THE INTERSECTION OF THE N/S QUARTER LINE OF SECTION 2 AND CENTER OF STATE ST. THAT ANGLE IS 179-54-45.
- 1935 STATE HIGHWAY PLANS. STATES THAT THE CORNER IS 0.2 EAST OF THE CENTER OF THE ROAD, 2653.0 NORTH OF THE SW CORNER OF SECTION 1, AND 320.4 SOUTH OF THE PI AND THE RIGHT WAY WITHIN THIS 320.4 FEET IS 78. ALSO SHOWS THAT BETWEEN THE WEST QUARTER CORNER AND SW CORNER OF SECTION 1 THE RIGHT OF WAY IS 45 ON THE EAST SIDE AND 42 ON THE WEST SIDE.



4 of 6

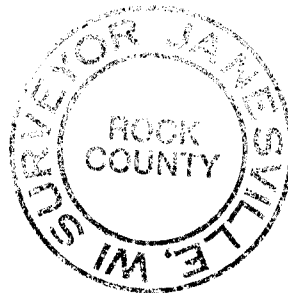
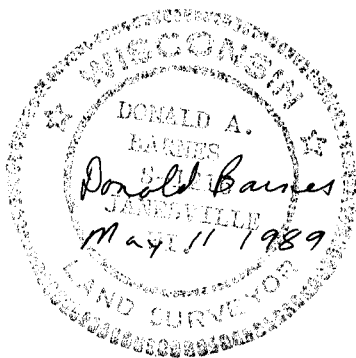
C-21

- 1928 WILSON - OVERLOOK HEIGHTS ADDITION NO. 2 SUBDIVISION. CALLS FOR THE CORNER BUT STATES NOTHING ABOUT IT. SHOWS A DISTANCE OF 1312.20 TO THE SOUTH LINE OF WOLCOTT ST.
- 1929 STATE HIGHWAY PLANS. SHOWS A DISTANCE OF 2869 TO THE NW CORNER OF SECTION 1
- 1937 SUNNY PLAT OF SURVEY. SHOWS A DISTANCE OF 1323.46 FROM THE SW CORNER OF SECTION 1 TO THE E 1/16th CORNER OF THE SW QUARTER OF SECTION 1.
- 1958 BATTERMAN PLAT OF SURVEY STARTS AT THE CORNER BUT STATES NOTHING ABOUT IT. SHOWS THAT THE E/W QUARTER LINE OF SECTION 2 IS NORTH OF STATE STREET AT AN ANGLE OF 2-04-10.
- 1983 COMBS PLAT OF SURVEY PLACED CHISELED "X" ON MANHOLE COVER. HE DID NOT FILE A U.S. PUBLIC LAND SURVEY MONUMENT RECORD OR AN EXPLANATION OF HOW IS ESTABLISHED IT. HE FOUND A CONCRETE MONUMENT TO THE EAST THAT WILSON PLACED FOR OVERLOOK HEIGHTS ADDITION NO. 2 SUBDIVISION. WILSON'S RECORD DISTANCE IS 464.94 AND COMB'S FIELD NOTES SHOWED A DISTANCE OF 465.42. COMBS ANGLE AT THE W 1/4 CORNER TO THIS MONUMENT IS 92-18-07 AND WILSON'S ANGLE IS 92-18-45.

I DID NOT ACCEPT THE CUT "X". THE CORNER THAT I ESTABLISHED IS IN HARMONY WITH ALMOST ALL OF THE FOUND MONUMENTS. I BELIEVE THE MOST COMPELLING REASONS FOR THIS LOCATION IS THE HARMONY BETWEEN THE EAST/WEST DISTANCE BETWEEN POINTS 1060,2062, AND THE 1/4 CORNER AS COMPARED WITH WILSON AND KERCH'S DISTANCES. ANOTHER MAJOR REASON IS THE DISTANCE FROM THE 1/4 CORNER TO POINT 3018. THIS IS THE SAME AS WILSON'S RECORD DISTANCE. ALSO DOT'S 1935 HWY PLANS CALL FOR THE CORNER TO BE .2 EAST OF THE CENTER OF THE PAVEMENT. THE CORNER AS ESTABLISHED IS .2 EAST OF THE CENTER OF THE PAVEMENT. THE FOLLOWING INFORMATION DEMONSTRATES THE HARMONY WITH OTHER FOUND MONUMENTS.

LINE	REC DISTANCE	COMPUTED
1/4 TO 1060	WILSON 464.94	464.94
1/4 TO SOUTH LINE	WILSON 1312.20	1312.20
1/4 TO 2062	WILSON 1003.02	1002.99
" "	KERCH 1002.84	" "
1026-11578 COMPUTED INTERSECTION	616.85	616.90
1026-11579 BENT IP	616.85	617.10

1/4 TO 3018 LINE		OFF SET DIST
11578	45	45.19
11579 BENT PIPE	"	45.11
1023	"	45.18
1024	"	45.06
1025	"	44.01
1026	"	45.09
1027	"	45.11
3016	"	44.97
1028	45	44.97



1/4 TO 2062 LINE		OFF SET DIST
11578	35	35.10
11579		35.00
3010		35.69
3006		35.64
1062		35.07
1061		34.97
1066		33.05
3007		34.21
3008	35	34.31

1/4 TO 2013 LINE		OFF SET DIST
1013	30	29.92
10144	30	29.95

LINE 519 TO A POINT 45 EAST OF 1022		OFF SET DIST.
--	--	---------------

1022	45	45.00
1021	45	45.23
1154	34	34.89
1020	33	33.48
11579	45	45.33
11578	45	45.42
11156	45	45.16

ANGLE 2013/1/4-3018	45-00-00	45-58-40
ANGLE 3018-1/4-2062	89-33-30	89-39-16
ANGLE 45 OFF PT 1022	89-33-30	89-32-04
@ 1/4 TO 1060	92-18-14	92-18-32

THE FOUND AND LEANING PIPE WHICH WAS STRAIGHTENED AND NAMED 11579
BEST FITS A LINE TO POINT 1030. ALL BUT POINT 1025 VARY FROM .03
TO .08' OFF THIS LINE.

