

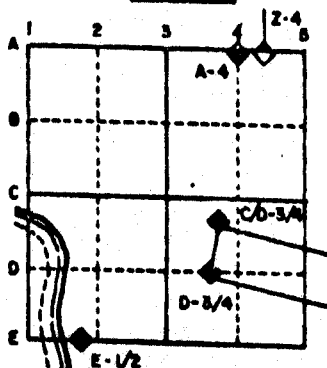
U.S. PUBLIC LAND SURVEY MONUMENT RECORD

For Public Land Survey Corners in the
T. 2 N., R. 12 E.

CORNER CODE INDEX

	1	2	3	4	5	6	7	8	9	10	11	12	13	14	15	16	17	18	19	20	21	22	23	24	25
A																									
B																									
C	6																								
D		5																							
E			4																						
F				3																					
G					2																				
H																									
I																									
J																									
K																									
L																									
M																									
N																									
O																									
P																									
Q																									
R																									
S																									
T																									
U																									
V																									
W																									
X																									
Y																									
Z																									

EXAMPLE



ROCK TWP
ROCK COUNTY WI

IF AVAILABLE
STATE PLANE COORDINATES

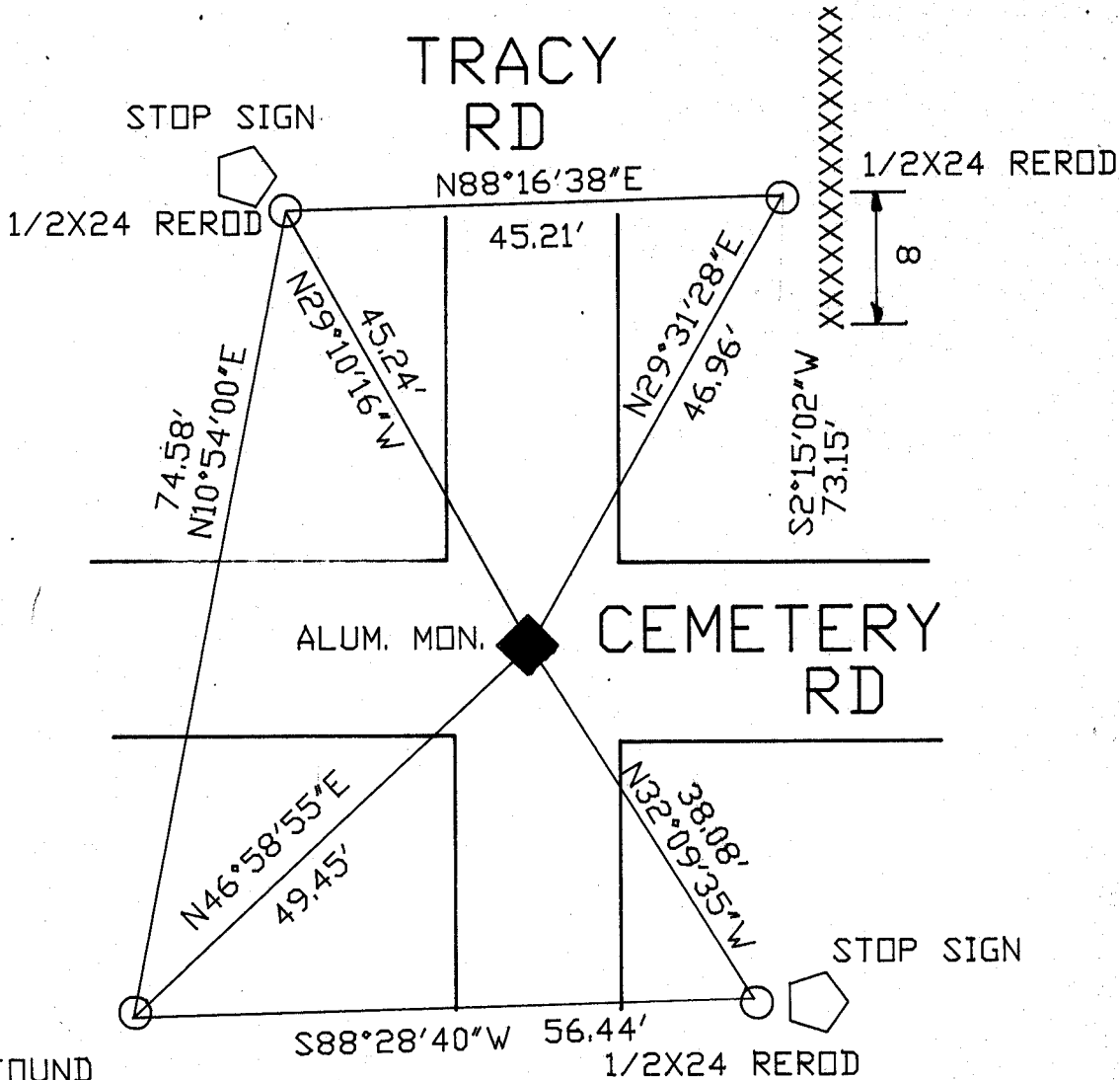
NAD
27 North (Y) 227,604.36 Elevation (Z) _____
East (X) 2,244,933.74 Zone _____
Hor. Datum _____ Vert. Datum _____
HURD 227,604.77
2,244,934.09

PLACE MONUMENT SYMBOL (◈) AT PROPER LOCATION ON ABOVE INDEX

- ◈ CORNER MONUMENT
- WITNESS MONUMENT

TRACY RD

STOP SIGN



MICROFILMED

SHEET ___ OF ___

CORNER CODE: P9

(B) Describe any record evidence, monument evidence, occupational evidence, testimonial evidence or any other material evidence you considered, and whether the monument was found or placed.

1860 RUGER VOL 1 PG 137 PLACED LIMESTONE 12X8X4 AND SURROUNDED BY LIMESTONES.

1962 LEE VOL 4 PG 125 FOUND 2" PIPE, SHOWS REFERENCE TIES AND MONUMENTS. SHOWS SHIMEALL'S DISTANCE OF 2645.10 TO THE SE CORNER OF SECTION 20.

197? BARNES VOL 5 PG 517 SHOWS COORDINATES OF N/S 227,604.77; N/S 2,244,934.09

FOUND 1 1/2" PIPE 0.1' DEEP. REPLACED PIPE WITH ALUMINUM MONUMENT.

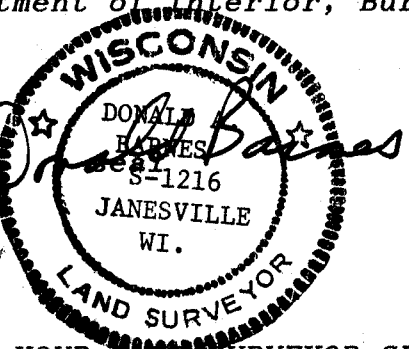
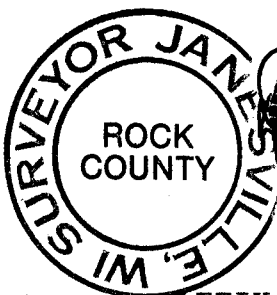
C) Was the corner restored through acceptance of (1) an obliterated evidence location, or, (2) a found perpetuated location?

ACCEPTED FOUND PIPE AS FOUND PERPETUATED LOCATION.

D) Describe any material discrepancy between the location of the corner as restored or reestablished and the location of that corner as previously restored or reestablished by distance and direction. Show the discrepancy on the plan view drawing under (a), above. Show the distances between the corner as previously restored or reestablished and (1) the corner as restored or reestablished, and (2) to at least 4 of the witness monuments shown on the drawing in (a), above.

(E) Was the corner reestablished through lost corner proportionate methods? If so, show the method, including the directions and distances to other public land survey corners used as evidence or used for proportioning the corner location.

I, Donald Barnes, hereby certify that the corner points as identified by the corner code index were, in a field survey on, JUNE 30, 1989, established, re-established, monumented, re-monumented, recovered or restored as expressed below and in conformance with the regulations and rules as required in the current manual of survey instructions of the United States Department of Interior, Bureau of Land Management.



AFFIX YOUR LAND SURVEYOR SEAL

COUNTY SURVEYOR FILING DATA
Date of computer entry _____
Date microfilmed _____
Number of included sheets _____
CORNER CODE

P9