

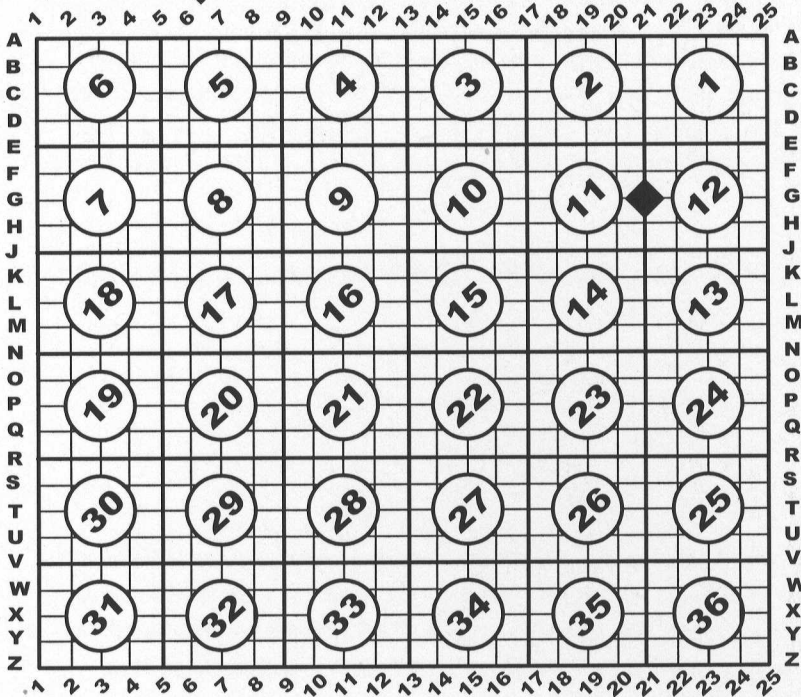
U.S. PUBLIC LAND SURVEY MONUMENT RECORD

For Public Land Survey Corners In:
T. 2 N. - R. 12 E. of the 4th P.M.

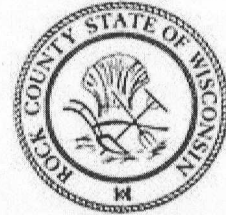
WI. ADMINISTRATIVE CODE
A-E 7.08 REQUIREMENT

CORNER CODE INDEX

(PLACE SYMBOL AT THE PLSS CORNER)



ROCK Twp.
Rock County, WI.



COORDINATES
GNSS DERIVED VIA WISCORS
WISCORS, ROCK DATUM, (NA2011)

NORTHING: 257056.24 ELEV: n/a
EASTING: 491059.35

Vertical Datum: NAVD 88, (If applicable)

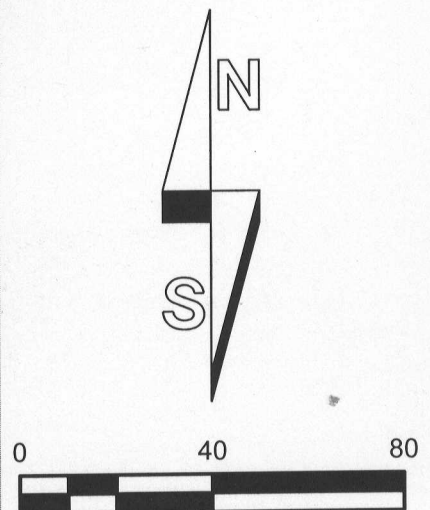
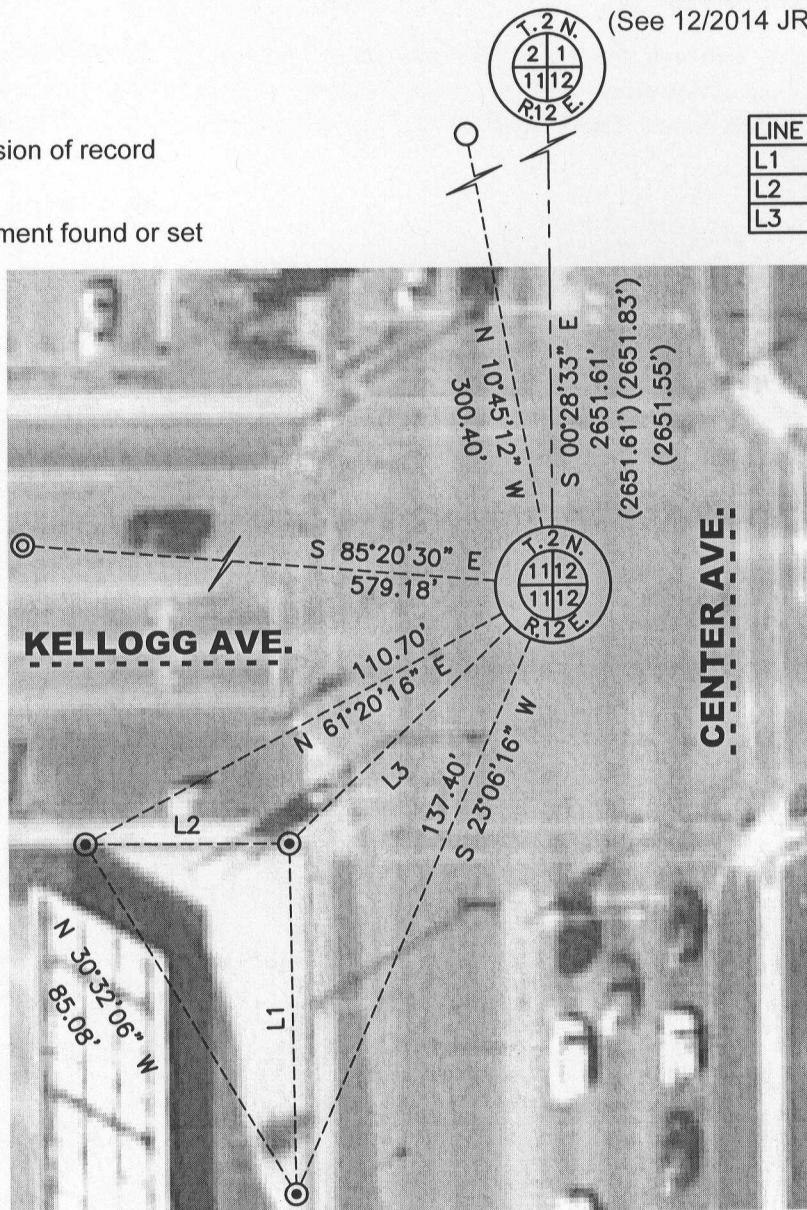
(a) - Legend

- Drill hole found
- Drill hole set
- Iron pipe found
- Previous dimension of record
- No monument found or set

No monument found or set
(See 12/2014 JRH tie-sheet)

LINE TABLE:

LINE	BEARING	DISTANCE
L1	N 00°53'53" W	73.07'
L2	S 89°42'30" E	42.08'
L3	N 45°55'26" E	76.64'



B) Describe any record evidence, monument evidence, occupational evidence, testimonial evidence or any other material evidence you considered, and whether the monument was found or placed.

This location has no surface monument and the last survey record prepared, (1978), pre-dates the most recent intersection reconstruction. I relied exclusively on surveys prepared by Combs & Associates in the northwest quadrant of the intersection, (Combs project 82-126, CSM V. 11, Pgs. 67-68), to recreate the PLSS corner location. The distance to the NE corner of 11-2-12 is in harmony with past surveys. I did not dig for an aluminum monument at the PLSS corner.

This intersection contains multiple utilities, traffic signals, pull boxes, etc. in some/all quadrants. I did not set a PLSS corner, show six ties to the location and provide WISCRS, Rock Datum, (NA2011), coordinates. Three ties are drill holes set in a retaining wall in the SW quadrant of the intersection. Setting the PLSS surface monument was traffic prohibitive and rebar ties were problematic given the amount of nearby buried utilities.

C) Was the corner restored through acceptance of (1) an obliterated evidence location, or, (2) a found perpetuated location?

Found perpetuated location.

D) Describe any material discrepancy between the location of the corner as restored or reestablished and the location of that corner as previously restored or reestablished by distance and direction. Show the discrepancy on the plan view drawing under (a), above. Show the distances between the corner as previously restored or reestablished and (1) the corner as restored or reestablished, and (2) to at least 4 of the witness monuments shown on the drawing in (a), above.

I did not find a discrepancy between the corner restored and a previously documented corner location. *Discrepancy* being defined as *disagreeing* with a corner location, *not* as noting dimensional differences between current/former tie sheets due to measuring methods. The current and *most recent* tie-sheet dimensions filed for the corner are noted.

(E) Was the corner reestablished through lost corner proportionate methods? If so, show the method, including the directions and distances to other public land survey corners used as evidence or used for proportioning the corner location.

N/A

I, **Jason R. Houle**, hereby certify that the corner location as identified by the corner code index was determined by me under my direction and control and that this U.S. Public Land Survey Monument Record is correct and complete to the best of my knowledge and belief.

CORNER CODE: G-21
(A.E. 7.08 REQUIREMENT)

