

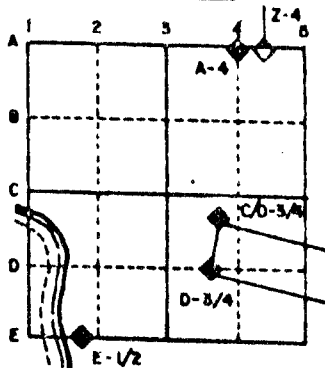
U.S. PUBLIC LAND SURVEY MONUMENT RECORD

For Public Land Survey Corners in the
T. 2 N., R. 2 E.

CORNER CODE INDEX

	1	2	3	4	5	6	7	8	9	10	11	12	13	14	15	16	17	18	19	20	21	22	23	24	25
A																									
B																									
C	6																								
D																									
E																									
F																									
G	7																								
H																									
I																									
J																									
K																									
L	18																								
M																									
N																									
O																									
P	19																								
Q																									
R																									
S																									
T	30																								
U																									
V																									
W																									
X	31																								
Y																									
Z																									

EXAMPLE



ROCK TWP
ROCK COUNTY WI

IF AVAILABLE
STATE PLANE COORDINATES

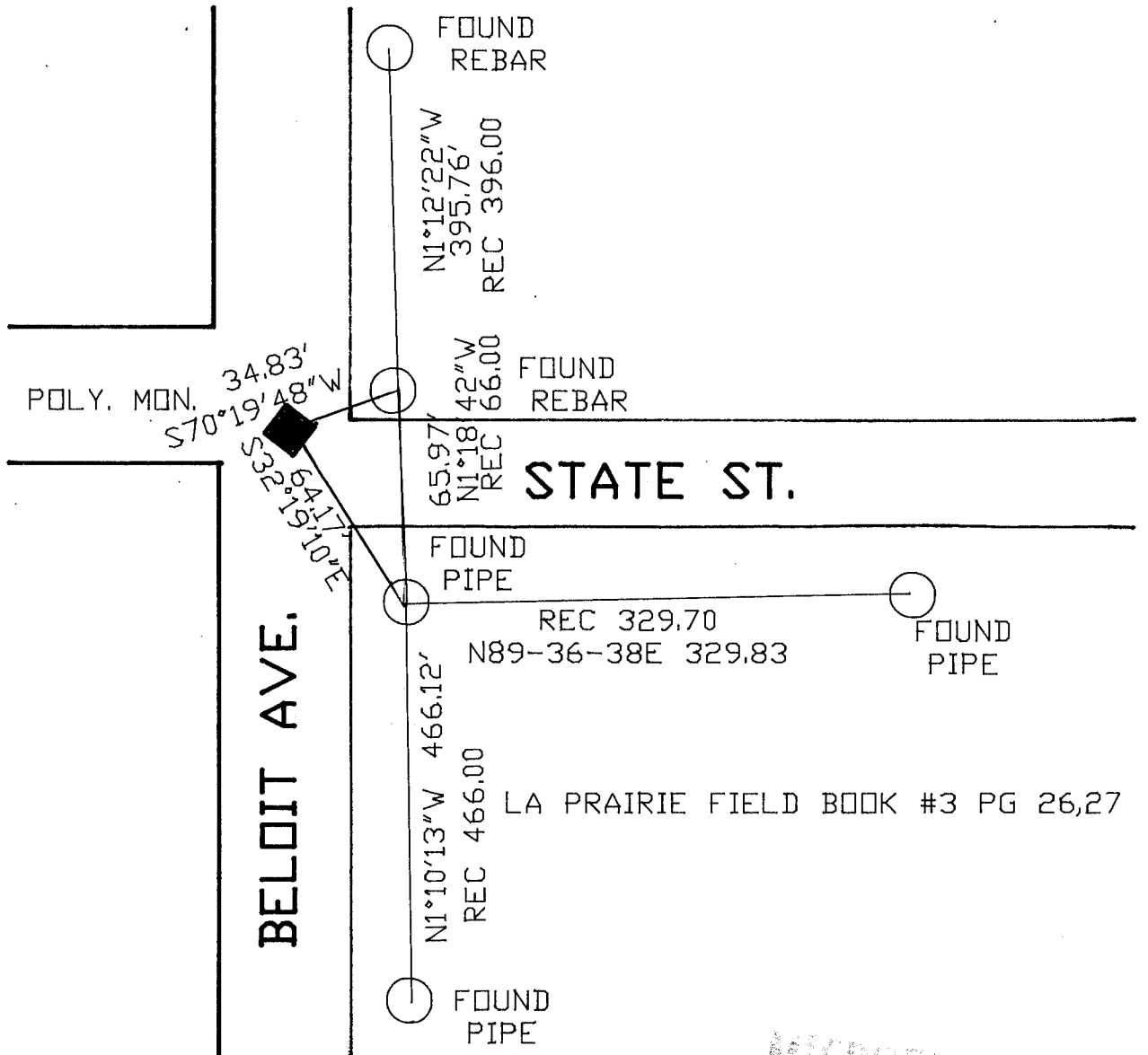
NAD
27 North (Y) 243,598.86 Eleve. (Z) _____
East (X) 2,265,795.23 Zone _____
Hor. Datum _____ Vert. Datum _____

PLACE MONUMENT SYMBOL (◆) AT PROPER
LOCATION ON ABOVE INDEX

LA PRAIRIE PROJECT
243,599.20
2,265,794.96

◆ CORNER MONUMENT
○ WITNESS MONUMENT
Poly Mon

BEARINGS ARE BASED ON: ASSUMED



MICROFILMED

SHEET ___ OF ___

CORNER CODE: C 25

(B) Describe any record evidence, monument evidence, occupational evidence, testimonial evidence or any other material evidence you considered, and whether the monument was found or placed.

1835 MULLETT ORIGINAL GOVERNMENT SURVEYOR. FIELD NOTES - SET QUARTER POST IN MOUND. PIT SOUTH 1.32'. MEASURED 2838' TO NE CORNER OF SECTION 1.

1877 RUGER VOL 2 PG 40. SHOWS A DISTANCE OF 2560.14 TO THE CENTER OF SECTION 1.

1882 RUGER VOL 2 PG 404 FOUND LIMESTONE. SET ON TOP OF IT LIMESTONE 10X6X4 1/2 AND PUT AROUND IT 8 SMALL HARDHEADS. SHOWS A DISTANCE OF 2568.06' TO THE CENTER OF SECTION 1. SHOWS A DISTANCE OF 1104.84 TO EASTERN AVE.

1919 BATTERMAN VOL 3 PG 86 FOUND SPIKE. UNDOUBTEDLY SET BY KERCH OVER MONUMENT.

1986 BARNES VOL 6 PG 359. SHOWS DISTANCES TO THE FOLLOWING CORNERS:

NW COR SEC 6	LA PRAIRIE	RUGER 1870	2827.44
CENTER SEC 6	LA PRAIRIE	RUGER 1870	2494.96
INTERSECTION OF 1/4 LINES SEC 6 LA PRAIRIE		N89-35-01E	2499.51
E 1/4 COR SEC 6	LA PRAIRIE	N89-35-01E	5134.50
SW COR SEC 6	LA PRAIRIE	RUGER 1870	2647.92

PLACED POLY MONUMENT.

FOUND POLY MONUMENT.

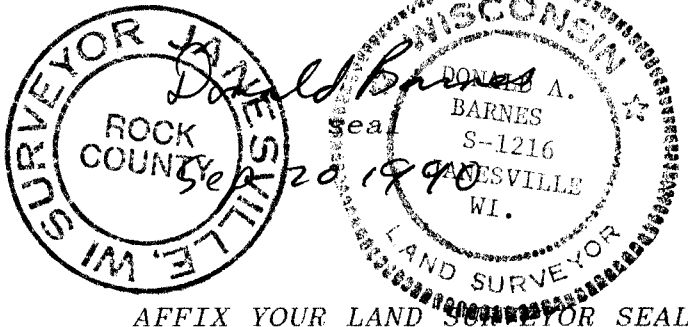
C) Was the corner restored through acceptance of (1) an obliterated evidence location, or, (2) a found perpetuated location?

ACCEPTED POLY. MONUMENT.

D) Describe any material discrepancy between the location of the corner as restored or reestablished and the location of that corner as previously restored or reestablished by distance and direction. Show the discrepancy on the plan view drawing under (a), above. Show the distances between the corner as previously restored or reestablished and (1) the corner as restored or reestablished, and (2) to at least 4 of the witness monuments shown on the drawing in (a), above.

(E) Was the corner reestablished through lost corner proportionate methods? If so, show the method, including the directions and distances to other public land survey corners used as evidence or used for proportioning the corner location.

I, Donald Barnes, hereby certify that the corner points as identified by the corner code index were, in a field survey on, July 18, 1990, established, re-established, monumented, re-monumented, recovered or restored as expressed below and in conformance with the regulations and rules as required in the current manual of survey instructions of the United States Department of Interior, Bureau of Land Management.



AFFIX YOUR LAND SURVEYOR SEAL

COUNTY SURVEYOR FILING DATA

Date of computer entry _____

Date microfilmed _____

Number of included sheets _____

CORNER CODE

C25