

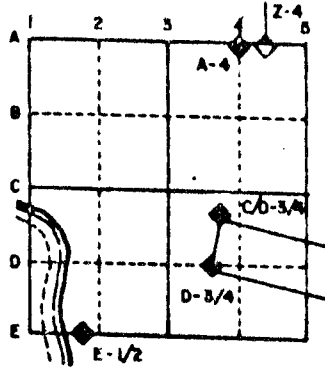
U.S. PUBLIC LAND SURVEY MONUMENT RECORD

For Public Land Survey Corners in the
T. 2 N., R. 12 E.

CORNER CODE INDEX

	1	2	3	4	5	6	7	8	9	10	11	12	13	14	15	16	17	18	19	20	21	22	23	24	25
A																									
B																									
C	6																								
D		5																							
E			4																						
F				3																					
G					2																				
H																									
I																									
J	7																								
K		8																							
L			9																						
M				10																					
N					11																				
O						12																			
P							13																		
Q								14																	
R									15																
S										16															
T											17														
U												18													
V													19												
W														20											
X															21										
Y																22									
Z																	23								
																		24							
																			25						
																				26					
																					27				
																						28			
																							29		
																								30	
																									31
																									32
																									33
																									34
																									35
																									36

EXAMPLE



Rock TWP
ROCK COUNTY WI

IF AVAILABLE
STATE PLANE COORDINATES

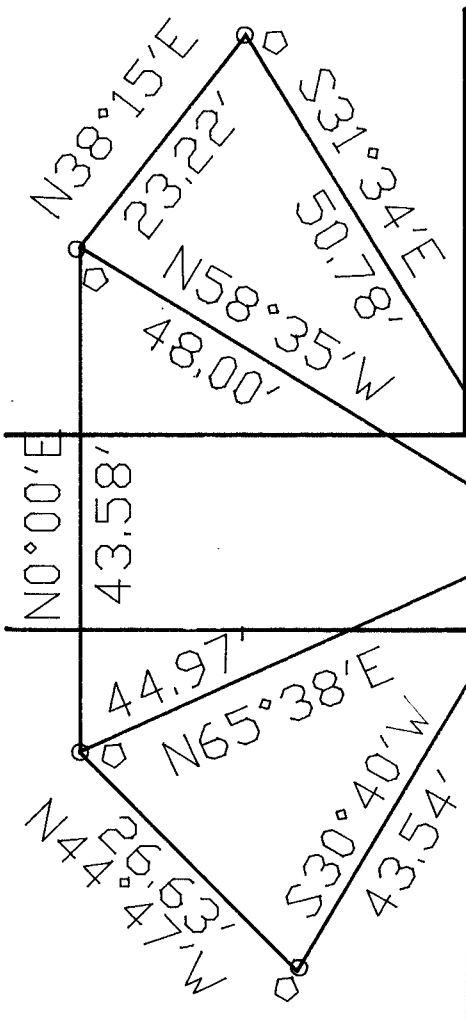
NAP 27 North (Y) 214,498.14 Eleve. (Z) _____
 East (X) 2,266,352.80 zone _____
 Hor. Datum _____ Vert. Datum _____

PLACE MONUMENT SYMBOL (●) AT PROPER LOCATION ON ABOVE INDEX
 LA PRAIRIE TWP
 214,499.04
 2,266,352.79

◆ CORNER MONUMENT

○ WITNESS MONUMENT

BEARINGS ARE BASED ON: ASSUMED



TOWN LINE RD

C.T.H. G

- RIGHT OF WAY POST
- 1" PIPE IN MON. BOX
- @ CENTER OF PAVEMENT
- 3/4"X24" REROD

MICROFILMED

(B) Describe any record evidence, monument evidence, occupational evidence, testimonial evidence or any other material evidence you considered, and whether the monument was found or placed.

- 1876 RUGER VOL 2 PG 216 FOUND MONUMENT. SHOWS 2596.11 TO S 1/4 CORNER OF SECTION 36 AND 2641.65' TO E 1/4 CORNER OF SECTION 36.
- 1881 HOLMES VOL 2 PG 338 FOUND STONE MONUMENT. SHOWS 2646.60 TO W 1/4 CORNER OF SECTION 31 LA PRAIRIE TOWNSHIP AND 2591.16 TO THE S 1/4 CORNER OF SECTION 31.
- 1893 BLEEDORN VOL 2 PG 480 CALLS FOR A MONUMENT. SHOWS 2649.90' TO THE S 1/4 CORNER OF SECTION 31 LA PRAIRIE TOWNSHIP.
- 1936 SUNNY VOL 3 PG 296 FOUND 6X6 CUT STONE MONUMENT 43" LOW. SET S 1/2 X 3' CONCRETE FENCE POST ON TOP 3'0" LONG. PLACED 1 1/2X7 IRON PIPE MONUMENT, CAPPED ON TOP FLUSH WITH BLACK TOP PAVEMENT AND REFERENCED SAME.
- 1948 VOL 6 PG 367 SHIMEALL FIELD NOES.
- 1960 BATTERMAN JR. VOL 4 PG 57 SHOWS REFERENCE TIES.
- 1979 BARNES VOL 5 PG 576 SHOWS THE FOLLOWING DISTANCES:
TO N 1/4 CORNER OF SEC 1 N89-44-36E 2638.43
RUGER 2596.11
BATTERMAN 2637.97
ORIGINAL 2640
- 1984 BARNES VOL 6 PG 316. PLACED ALUMINUM MONUMENT AT CORNER. DOT COORDINATES N/S 214,498.03;E/W 2,266,352.37
- 1985 BARNES VOL 6 PG 335 SHOWS THE FOLLOWING DISTANCES:
TO E 1/4 COR SEC 36 RUGER 2641.65
S 1/4 COR SEC 36 RUGER 2596.11
SHIMMEALL 2594
- 1989 BARNES VOL 6 PG 397 SHOWS THE FOLLOWING DISTANCES:
TO E 1/4 COR SEC 36 N2-00-30W 2645.08
RUGER 2641.65
S 1/4 COR SEC 36 S89-01E 2594.32
SHIMEALL 2594.23
RUGER 2596.11
ORIGINAL 2640
ORIGINAL
PLAT 2671.02

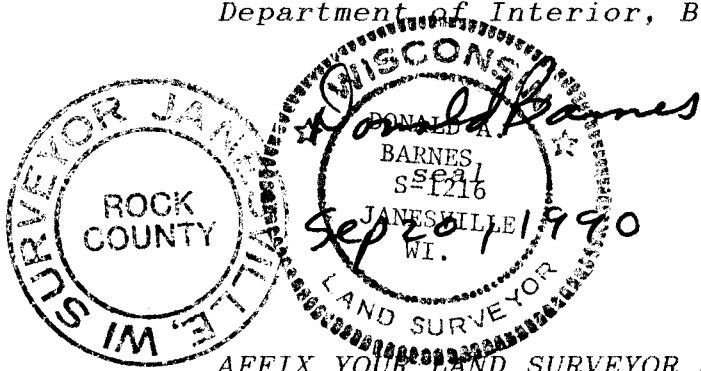
FOUND ALUMINUM MONUMENT.

C) Was the corner restored through acceptance of (1) an obliterated evidence location, or, (2) a found perpetuated location?

ACCEPTED FOUND MONUMENT.

D) Describe any material discrepancy between the location of the corner as restored or reestablished and the location of that corner as previously restored or reestablished by distance and direction. Show the discrepancy on the plan view drawing under (a), above. Show the distances between the corner as previously restored or reestablished and (1) the corner as restored or reestablished, and (2) to at least 4 of the witness monuments shown on the drawing in (a), above.

I, Donald Barnes, hereby certify that the corner points as identified by the corner code index were, in a field survey on, July 20, 1990, established, re-established, monumented, re-monumented, recovered or restored as expressed below and in conformance with the regulations and rules as required in the current manual of survey instructions of the United States Department of Interior, Bureau of Land Management.



AFFIX YOUR LAND SURVEYOR SEAL

COUNTY SURVEYOR FILING DATA
Date of computer entry _____
Date microfilmed _____
Number of included sheets _____
CORNER CODE

2 25