

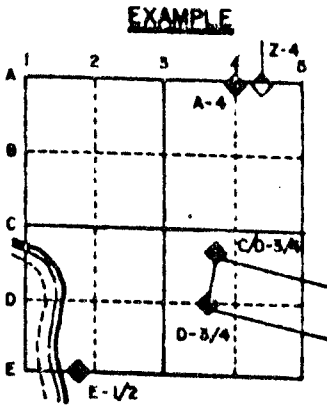
U.S. PUBLIC LAND SURVEY MONUMENT RECORD

For Public Land Survey Corners in the

T. 2 N., R. 13 E.

CORNER CODE INDEX

	1	2	3	4	5	6	7	8	9	10	11	12	13	14	15	16	17	18	19	20	21	22	23	24	25
A																									
B																									
C		6																							
D			5																						
E				4																					
F					3																				
G						2																			
H																									
I																									
J																									
K																									
L																									
M																									
N																									
O																									
P																									
Q																									
R																									
S																									
T																									
U																									
V																									
W																									
X																									
Y																									
Z																									



ROCK TWP
ROCK COUNTY WI

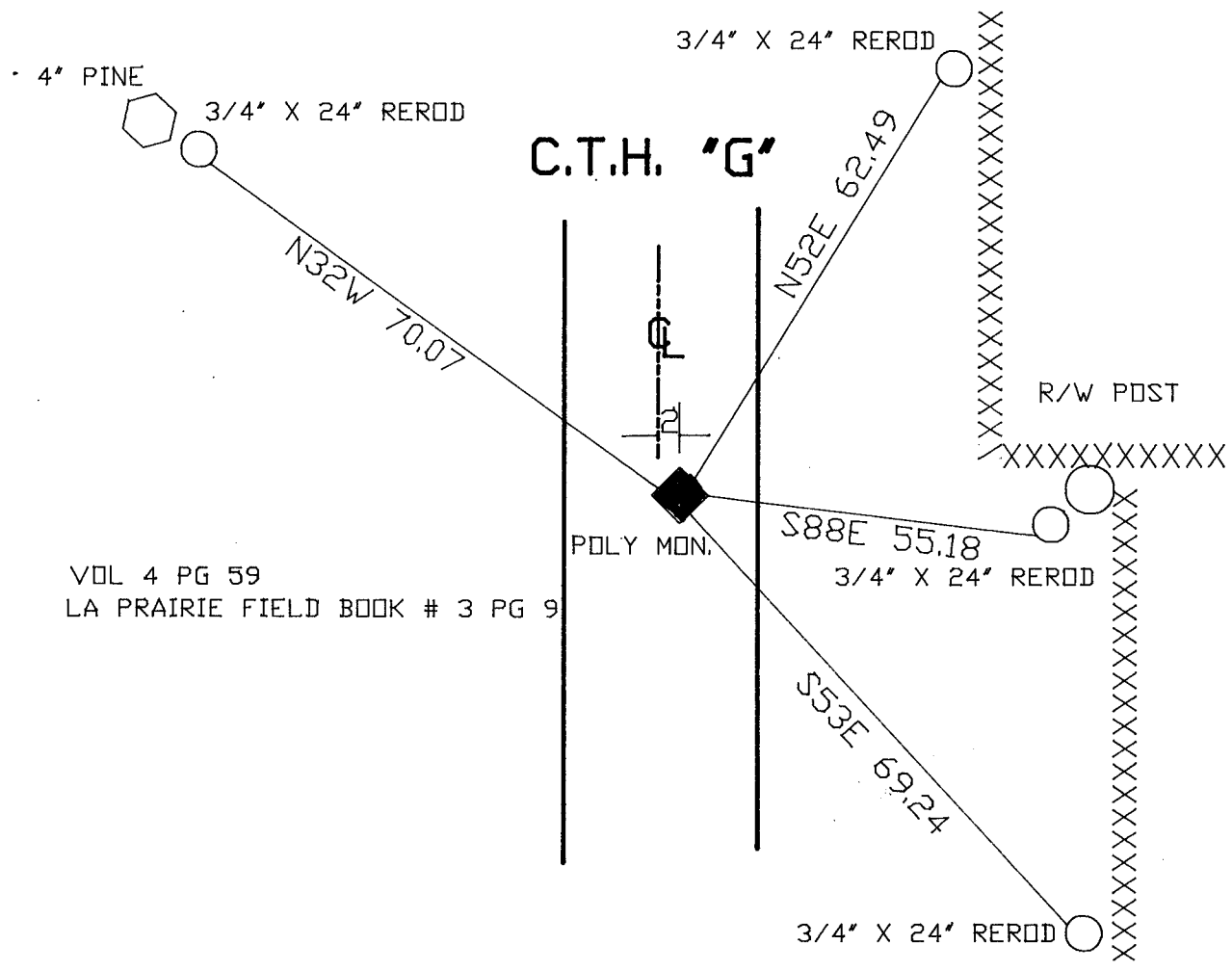
IF AVAILABLE
STATE PLANE COORDINATES

NAD North (Y) 225,089.46 Elev. (Z) 819.8
27 East (X) 2,266,093.22 Zone _____
Hor. Datum _____ Vert. Datum _____
LA PRAIRIE PROJ.
225,090.30
2,266,093.12

PLACE MONUMENT SYMBOL (◆) AT PROPER LOCATION ON ABOVE INDEX

◆ CORNER MONUMENT ○ WITNESS MONUMENT

BEARINGS ARE BASED ON: ASSUMED



VOL 4 PG 59
LA PRAIRIE FIELD BOOK # 3 PG 9

.(B) Describe any record evidence, monument evidence, occupational evidence, testimonial evidence or any other material evidence you considered, and whether the monument was found or placed.

1836 LYON. ORIGINAL GOVERNMENT SURVEYOR. FIELD NOTES - SET POST CORNER TO SECTIONS 24 & 25 IN MOUND. PIT BEARING SOUTH 3.3'

1866 LOCKE VOL 1 PG 253 FOUND REMAINS OF STAKE. SET STAKE. SHOWS 2632.74 TO W 1/4 COR SEC 19 LA PRAIRIE TOWNSHIP

1920 BATTERMAN VOL 3 PG 95 IRON ROD? SHOWS A DISTANCE OF 2582.2(?) TO THE S 1/4 COR SEC 24.

1936 SUNNY VOL 3 PG 295 FOUND 6X6 CUT STONE MONUMENT 12" LOW. SET 1 1/2" IRON PIPE MONUMENT, CAPPED. REFERENCED SAME.

1960 BATTERMAN VOL 4 PG 59 REFERENCED SAME.

1989 BARNES VOL 6 PG 394. N/S 225,089.08; E/W 2,266,093.19; TOWNSHIP PROJECT N/S 225,090.30 E/W 2,266,093.12 SHOWS THE FOLLOWING DISTANCE

TO E 1/4 COR SEC 24	S0-36-41E	2639.06
	RUGER 1871	2640
	BARNES 1985	2639/02
S 1/4 COR SEC 24	S89-35-44E	2516.24
E 1/4 COR SEC 25	S0-40-03E	2663.15
	RUGER 1871	2653.20
	BARNES 1985	2663.17

FOUND POLY MONUMENT.

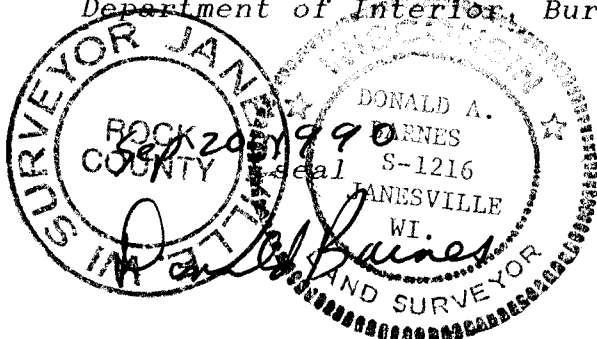
C) Was the corner restored through acceptance of (1) an obliterated evidence location, or, (2) a found perpetuated location?

ACCEPTED FOUND MONUMENT.

D) Describe any material discrepancy between the location of the corner as restored or reestablished and the location of that corner as previously restored or reestablished by distance and direction. Show the discrepancy on the plan view drawing under (a), above. Show the distances between the corner as previously restored or reestablished and (1) the corner as restored or reestablished, and (2) to at least 4 of the witness monuments shown on the drawing in (a), above.

(E) Was the corner reestablished through lost corner proportionate methods? If so, show the method, including the directions and distances to other public land survey corners used as evidence or used for proportioning the corner location.

I, Donald Barnes, hereby certify that the corner points as identified by the corner code index were, in a field survey on, July 20, 1990, established, re-established, monumented, re-monumented, recovered or restored as expressed below and in conformance with the regulations and rules as required in the current manual of survey instructions of the United States Department of Interior, Bureau of Land Management.



AFFIX YOUR LAND SURVEYOR SEAL

COUNTY SURVEYOR FILING DATA

Date of computer entry _____

Date microfilmed _____

Number of included sheets _____

CORNER CODE

R 25