

U.S. PUBLIC LAND SURVEY MONUMENT RECORD

For Public Land Survey Corners in:

WI ADMINISTRATIVE CODE A-E 7.08 REQUIREMENT

T. 2N., R. 12E

CORNER CODE INDEX

A	1	2	3	4	5	6	7	8	9	10	11	12	13	14	15	16	17	18	19	20	21	22	23	24	25
B																									
C	6																								
D																									
E																									
F																									
G	7																								
H																									
J																									
K																									
L	18																								
M																									
N																									
O																									
P	19																								
Q																									
R																									
S																									
T	30																								
U																									
V																									
W																									
X	31																								
Y																									
Z																									

ROCK TWP
ROCK COUNTY WI

IF AVAILABLE
ROCK COUNTY COORDINATES PREFERRED

North _____ Elev. _____

East _____

Hor. Datum _____ Vert. Datum _____

LATITUDE _____ ELLIPS. HT. _____

LONGITUDE _____

GPS (X) _____ TRAVERSE (X) _____

BASED ON THE FOLLOWING CONTROL:

PLACE MONUMENT SYMBOL AT PROPER LOCATION ON ABOVE INDEX

CORNER MONUMENT

WITNESS MONUMENT

BEARINGS ARE BASED ON: _____

FIELD BOOK _____ PAGE # _____

SHEET 1 OF 2

SHOW A PLAN VIEW DRAWING DEPICTING THE CORNER MONUMENT AND SURROUNDING PHYSICAL FEATURES, INCLUDING THE EXCAVATION AREA AND DEPTH.

PLANNING & ZONING COMMITTEE ADOPTED THE ABOVE FORM ON 12/2/1982

CORNER CODE P-25

RO580

(B) Describe any record evidence, monument evidence, occupational evidence, testimonial evidence or any other material evidence you considered, and whether the monument was found or placed.

- 1835 MULETT NORTH ALONG EAST SIDE OF SEC 24.
2640 SET QUARTER SECTION POST IN MOUND. PIT BEARING SOUTH 5.
3333 ARMY TRAIL CROSSING N.W.
- 1866 LOCKE VOL 1 PG 253 FOUND POST & MOUND-SET STAKE. 2645.28 TO SW COR SEC 19 & 5277.36' TO E 1/4 COR SEC 19
- 1871 RUGER REMONUMENTATION. FD LIMESTONE. 2628.45 TO NW COR SEC 19 & 2640 TO SW COR SEC 19. PLACED CUT LIMESTONE.
- 1920 BATTERMAN ANGLE OF 89-02-20 @ SE COR SEC 24 FROM S 1/4 COR SEC 24 TO E 1/4 COR SEC 24.
- 1936 SUNNY VOL 3 PG 295 FD 6X6 STONE MONUMENT 22" LOW SET 1 1/2" IRON PIPE, CAPPED ON TOP. REFERENCED SAME. CALLS FOR 2639.00 TO SW COR SEC 19.
- 1960 BATTERMAN VOL 4 PG 59 REFERENCED CORNER WITH PIPES BUT STATES NOTHING ABOUT MONUMENT.
- 1989 BARNES VOL 6 PG 394 SHOWS RECORD DISTANCES. ANGLE OF 88-59-03 @ SE COR SEC 24 FROM S 1/4 COR SEC 24 TO E 1/4 COR SEC 24.

FOUND 1" PIPE IN MONUMENT BOX 1' EAST OF CENTER OF PAVEMENT. TOP OF BOX IS 0.5' BELOW PAVEMENT SURFACE. TERRAIN INDICATES LARGE FILL AREA.

(C) Was the corner restored through acceptance of (1) an obliterated evidence location, or, (2) a found perpetuated location?

ACCEPTED FOUND MONUMENT.

(D) Describe any material discrepancy between the location of the corner as restored or reestablished and the location of that corner as previously restored or reestablished by distance and direction. Show the discrepancy on the plan view drawing under (a), above. Show the distances between the corner as previously restored or reestablished and (1) the corner as restored or reestablished, and (2) to at least 4 of the witness monuments shown on the drawing in (a), above.

(E) Was the corner reestablished through lost corner proportionate methods? If so, show the method, including the directions and distances to other public land survey corners used as evidence or used for proportioning the corner location.

I, Donald Barnes, hereby certify that the corner location as identified by the corner code index was determined by me under by direction and control and that this U.S. Public Land Survey Monument Record is correct and complete to the best of my knowledge and belief.

seal

Number of included sheets 1

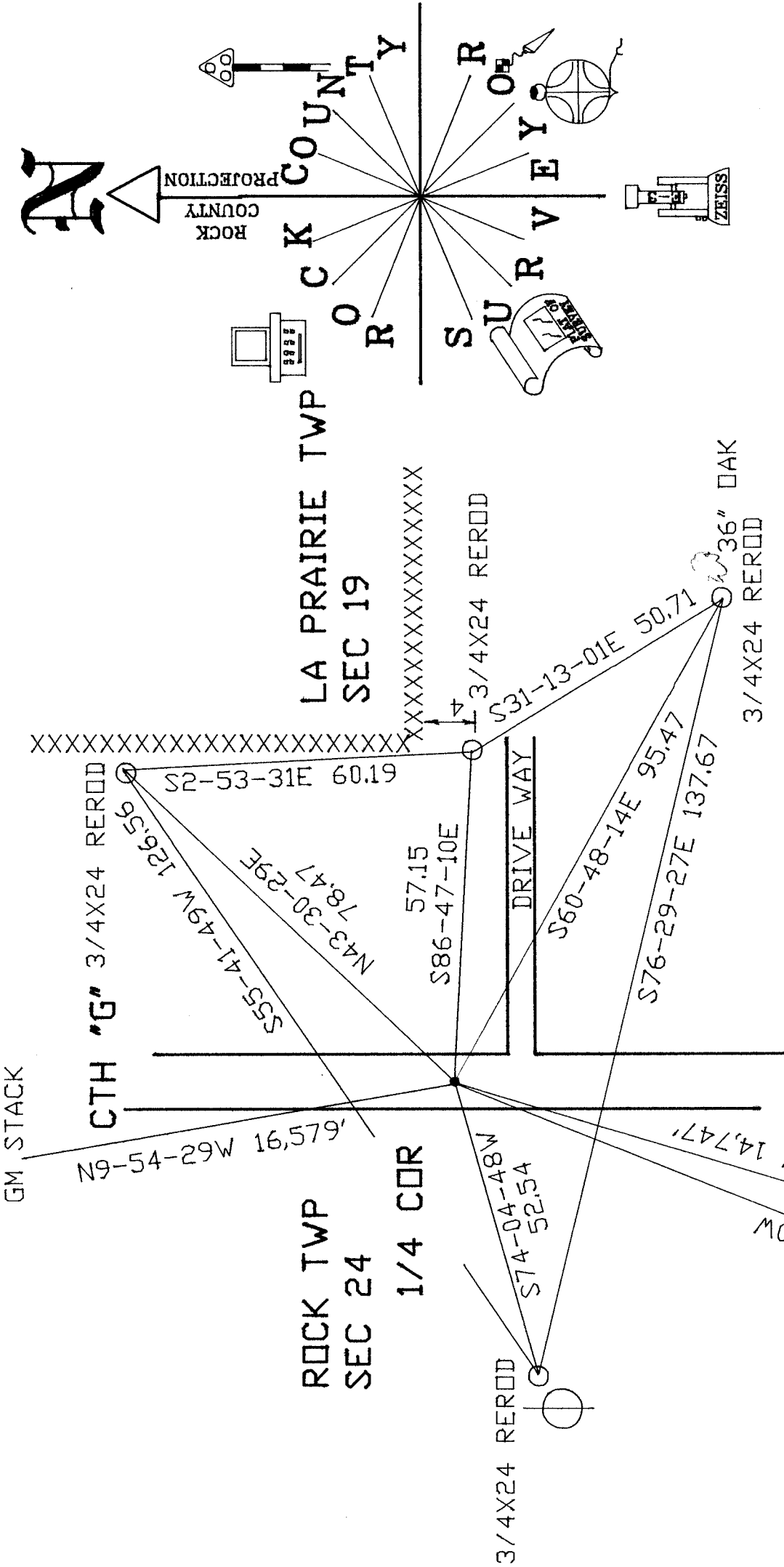
emboss

Donald Barnes
Feb 5, 1999

A-E 7.08 REQUIREMENT

CORNER CODE

P-25



LA PRAIRIE F.B. #3 PG 62
 FD 1" PIPE IN MON. BOX
 TOP OF MON. BOX
 IS 0.5' BELOW PVMT SURFACE
 1' EAST OF CENTER
 OF PVMT.

D. J. Williams
 FEB 5, 1999

EMBOSSSED SEAL

WPL POWER STACKS