

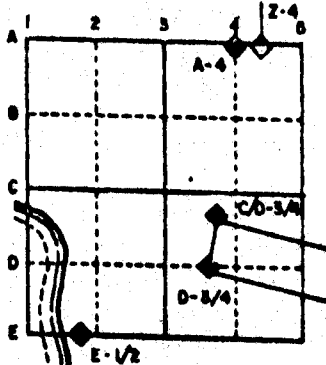
U.S. PUBLIC LAND SURVEY MONUMENT RECORD

For Public Land Survey Corners in the
T. 2 N., R. 12 E.

CORNER CODE INDEX

	1	2	3	4	5	6	7	8	9	10	11	12	13	14	15	16	17	18	19	20	21	22	23	24	25
A																									
B																									
C	6																								
D		5																							
E			4																						
F				3																					
G					2																				
H	7																								
I		8																							
J			9																						
K				10																					
L					11																				
M						12																			
N	18																								
O		17																							
P			16																						
Q				15																					
R					14																				
S						13																			
T	19																								
U		20																							
V			21																						
W				22																					
X					23																				
Y						24																			
Z	30																								
		29																							
			28																						
				27																					
					26																				
						25																			
	31																								
		32																							
			33																						
				34																					
					35																				
						36																			

EXAMPLE



ROCK TWP
ROCK COUNTY WI

IF AVAILABLE STATE PLANE COORDINATES

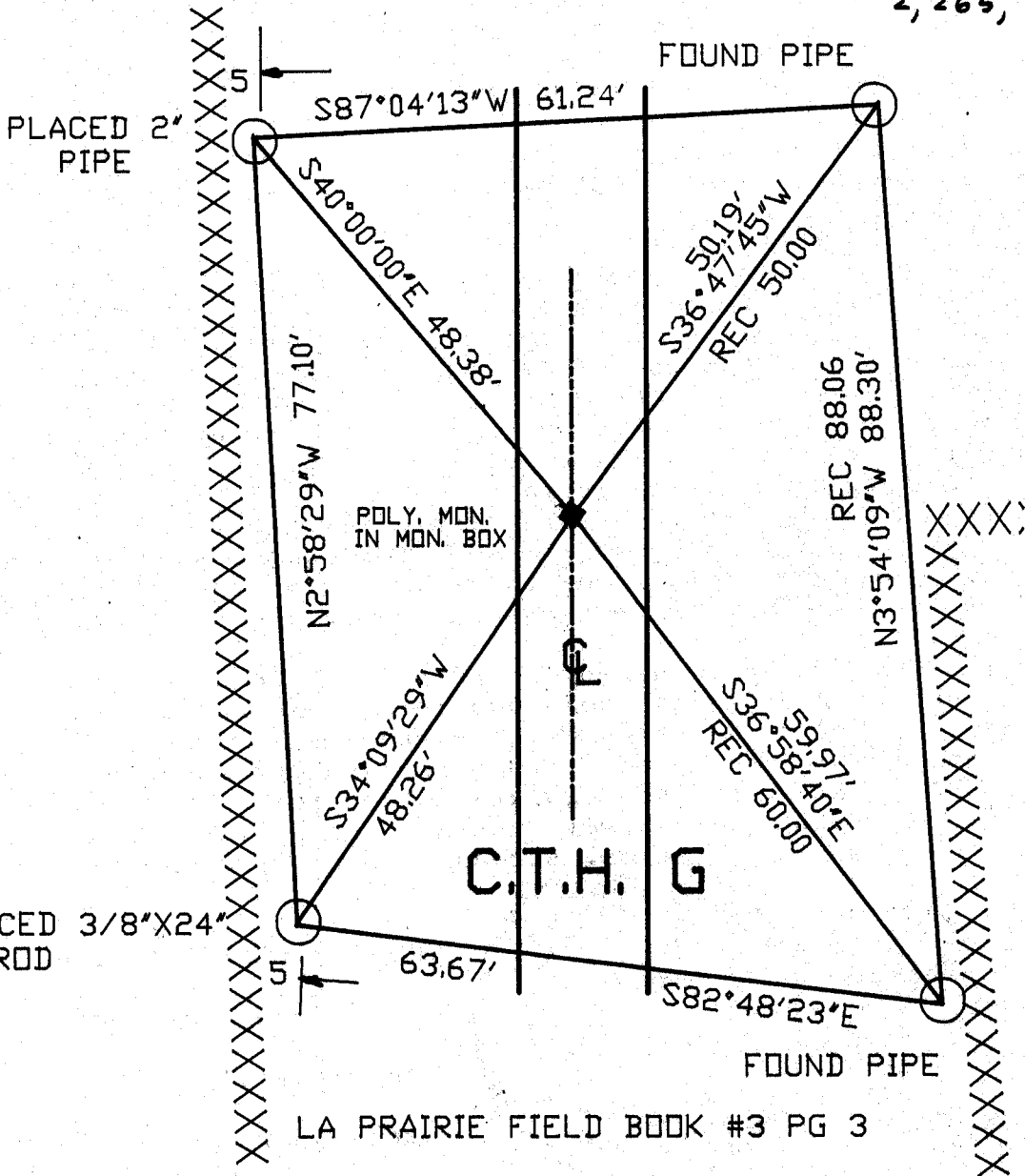
NAD 29 North (Y) 235,652,96 Eleve. (Z) _____
East (X) 2,265,952,66 Zone _____
Hor. Datum _____ Vert. Datum _____
HURD 235,653,86 LA PRAIRIE PROJECT 235,653,62
2,265,953,48 2,265,952,65

PLACE MONUMENT SYMBOL (●) AT PROPER
LOCATION ON ABOVE INDEX

◆ CORNER MONUMENT

○ WITNESS MONUMENT

S.T.H 235,653,20
2,265,952.30



BEARINGS ARE BASED ON: ASSUMED

LA PRAIRIE FIELD BOOK #3 PG 3

MICROFILMED
SHEET ___ OF ___

CORNER CODE: J 25

(B) Describe any record evidence, monument evidence, occupational evidence, testimonial evidence or any other material evidence you considered, and whether the monument was found or placed.

- 1833 MULLETT ORIGINAL GOVERNMENT SURVEYOR. FIELD NOTES - SET POST CORNER SECTIONS 13 & 24 IN MOUND. PIT SOUTH 1.98'.
1836 LYON ORIGINAL GOVERNMENT SURVEYOR. FIELD NOTES - EAST BETWEEN SECTIONS 12 & 13. INTERSECTED RANGE LINE 54.78' NORTH OF POST. MEASURED 2545.62 TO S 1/4 CORNER OF SECTION 12.
1869 LEE VOL 2 PG 4 FOUND OLD STAKE. SHOWS A DISTANCE OF 2564.10 TO S 1/4 CORNER OF SEC 12 AND 2653.20 TO E 1/4 CORNER OF SECTION 13.
1871 RUGER LA PRAIRIE TOWNSHIP REMONUMENTATION FIELD NOTES. SOUTH ALONG THE SW LINE OF SECTION 7. 2647.26' INTERSECTED SOUTH BOUNDARY 1.65' EAST OF CORNER. FOUND STAKE SURROUNDED BY 3 LIMESTONES AT CORNER. MEASURED 2654.52 TO W 1/4 CORNER OF SECTION 18 AND 2443.98' TO THE S 1/4 CORNER OF SECTION 7.
1936 SUNNY VOL 3 PG 294 FOUND 6X6 HARD HEAD. SET 1 1/2"X14" IRON PIPE WITH CAP ON TOP. SHOWS TIES.
1960 BATTERMAN VOL 4 PG 60 SHOWS REFERENCE TIES.
1968 BATTERMAN JR. VOL 4 PG 387. SHOWS N89-44-30W 24444.36 TO N 1/4 CORNER OF SECTION 18 LA PRAIRIE TOWNSHIP.
19?? HURD VOL 5 PG 517 N/S 235,653.86; E/W 2,265,953.48
1989 BARNES VOL 6 PG 395 COORDINATES N/S 235,652.85; E/W 2,265,952.87; TOWNSHIP PROJECT N/S 235,653.62; E/W 2,265,952.65 DOT-N/S 235,653.20; E/W 2,265,952.30. SHOWS THE FOLLOWING DISTANCES:

TO E 1/4 COR SEC 13 RUGER 1871	2654.52
BARNES 1986	2653.41
HURD	2653.36
NO-46-29W	2653.37

FOUND POLY MONUMENT IN MONUMENT BOX.

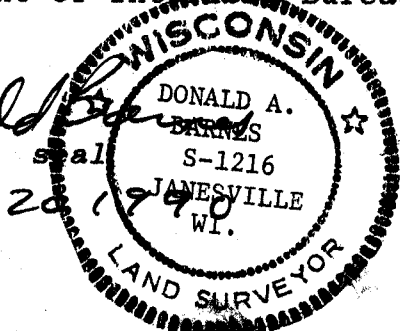
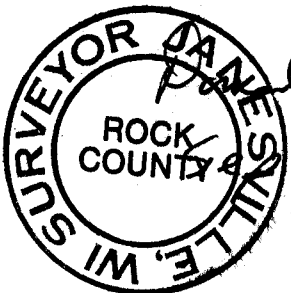
C) Was the corner restored through acceptance of (1) an obliterated evidence location, or, (2) a found perpetuated location?

ACCEPTED FOUND MONUMENT.

D) Describe any material discrepancy between the location of the corner as restored or reestablished and the location of that corner as previously restored or reestablished by distance and direction. Show the discrepancy on the plan view drawing under (a), above. Show the distances between the corner as previously restored or reestablished and (1) the corner as restored or reestablished, and (2) to at least 4 of the witness monuments shown on the drawing in (a), above.

(E) Was the corner reestablished through lost corner proportionate methods? If so, show the method, including the directions and distances to other public land survey corners used as evidence or used for proportioning the corner location.

I, Donald Barnes, hereby certify that the corner points as identified by the corner code index were, in a field survey on, July 18, 1990, established, re-established, monumented, re-monumented, recovered or restored as expressed below and in conformance with the regulations and rules as required in the current manual of survey instructions of the United States Department of Interior Bureau of Land Management.



COUNTY SURVEYOR FILING DATA

Date of computer entry _____

Date microfilmed _____

Number of included sheets _____

CORNER CODE

AFFIX YOUR LAND SURVEYOR SEAL

J 25