

U.S. PUBLIC LAND SURVEY MONUMENT RECORD

For Public Land Survey Corners in:

WI ADMINISTRATIVE CODE A-E 7.08 REQUIREMENT

T. 4 N., R. 10 E

CORNER CODE INDEX

A	1	2	3	4	5	6	7	8	9	10	11	12	13	14	15	16	17	18	19	20	21	22	23	24	25
B																									
C	6																								
D																									
E																									
F																									
G	1																								
H																									
I																									
J																									
K																									
L	18																								
M																									
N																									
O																									
P	19																								
Q																									
R																									
S	30																								
T																									
U																									
V																									
W																									
X	31																								
Y																									
Z																									

UNION TWP

ROCK COUNTY WI

IF AVAILABLE
ROCK COUNTY COORDINATES PREFERRED

North _____ Elev. _____

East _____


Hor. Datum _____ Vert. Datum _____

LATITUDE _____ ELLIPS. HT. _____

LONGITUDE _____

GPS (X) _____ TRAVERSE (X) _____

BASED ON THE FOLLOWING CONTROL:

PLACE MONUMENT SYMBOL  AT PROPER LOCATION ON ABOVE INDEX

 CORNER MONUMENT

 WITNESS MONUMENT

(a)

BEARINGS ARE BASED ON:

FIELD BOOK _____ PAGE # _____

SHEET 1 OF 2

SHOW A PLAN VIEW DRAWING DEPICTING THE CORNER MONUMENT AND SURROUNDING PHYSICAL FEATURES, INCLUDING THE EXCAVATION AREA AND DEPTH.

PLANNING & ZONING COMMITTEE ADOPTED THE ABOVE FORM ON 12/2/1982

CORNER CODE N13(1)

UN567

(B) Describe any record evidence, monument evidence, occupational evidence, testimonial evidence or any other material evidence you considered, and whether the monument was found or placed.

1870 RUGER REMONUMENTATION PG 93 SOUTH ON EAST LINE OF SE 1/4 SEC 16 ON A VAR 6-15 OFFSET EAST 3.96' AT 2656.17' INTERSECTED SOUTH BOUNDARY LINE 7.26 EAST OF COR. FOUND OLD STAKE AT COR. CORRECTED VAR 6-11
PG 94 WEST ON SOUTH LINE SE 1/4 SEC 16 ON A VAR 7-00 OFF SET NORTH 7.92', OFFSET NORTH 1.32', OFFSET SOUTH 6.6' AT 2663.10 INTERSECTED 1/4 LINE 6.6' NORTH OF 1/4 COR. FD REMAINS OF OLD STAKE AT COR. FD STUMPS OF BEARING TREES. STAKE CORRECT. CORRECTED VAR 7-05
PG 96 NORTH ON EAST LINE OF NE 1/4 SEC 21 ON A VAR 7-00 AT 2658.64 INTERSECTED NORTH BOUNDARY LINE 1.98' EAST OF COR. CORRECTED VAR 7-02
PG 97 EAST ON NORTH LINE OF NW 1/4 SEC 22 ON A VAR 6-35. OFFSET NORTH 12.54' AT 2635.38 INTERSECTED 1/4 LINE 6.6' SOUTH OF 1/4 COR. FOUND STUMPS OF BEARING TREES & ESTABLISHED COR. FROM THEM. CORRECTED VAR 7-00
1890 BLEEDORN VOL 2 PG 430 GALLS FOR MON 2657.16 TO E 1/4 COR SEC 16.
1957 BATTERMAN VOL 3 PG 516 FD CUT LIMESTONE 2664.81 TO E 1/4 COR SEC 16.
1982 BARNES VOL 6 PG 288 SHOWS RUGER 1870 VAR 7-05 2663.10 FROM N 1/4 COR SEC 21 TO NE COR SEC 21 & RUEGER 2658.65 TO E 1/4 COR SEC 21
1991 BARNES N-13 FD CUT LIMESTONE & REFERENCED SAME. PLACED GARSONITE POST NEAR STONE.

FOUND CUT LIMESTONE & REFERENCE PIPES. ALSO FOUND PIN ON SE COR OF STONE. PIN IS ABOUT 0.3' ABOVE THE GROUND.

C) Was the corner restored through acceptance of (1) an obliterated evidence location, or, (2) a found perpetuated location?

ACCEPTED FOUND STONE.

D) Describe any material discrepancy between the location of the corner as restored or reestablished and the location of that corner as previously restored or reestablished by distance and direction. Show the discrepancy on the plan view drawing under (a), above. Show the distances between the corner as previously restored or reestablished and (1) the corner as restored or reestablished, and (2) to at least 4 of the witness monuments shown on the drawing in (a), above.

SEE MAP FOR DISCREPANCY WITH FOUND PIN.

(E) Was the corner reestablished through lost corner proportionate methods? If so, show the method, including the directions and distances to other public land survey corners used as evidence or used for proportioning the corner location.

I, Donald Barnes, hereby certify that the corner location as identified by the corner code index was determined by me under my direction and control and that this U.S. Public Land Survey Monument Record is correct and complete to the best of my knowledge and belief.

Seal

Donald Barnes

Emboss

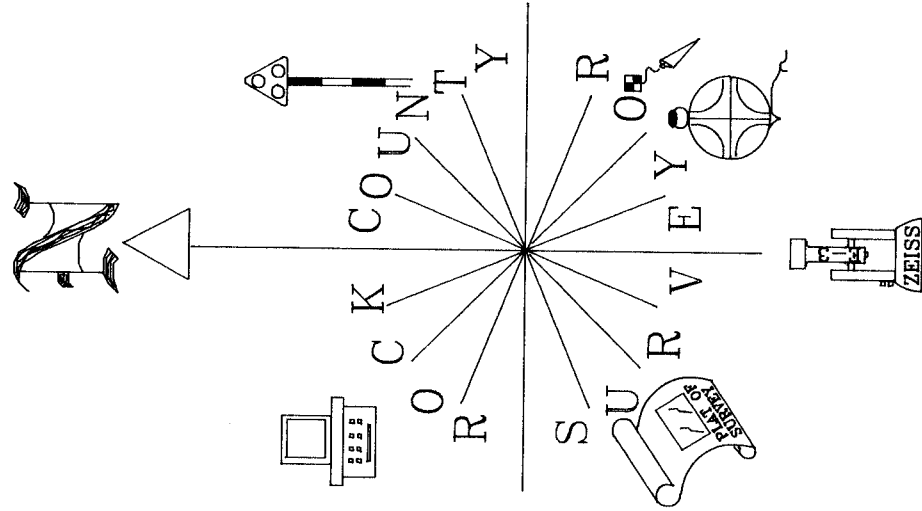
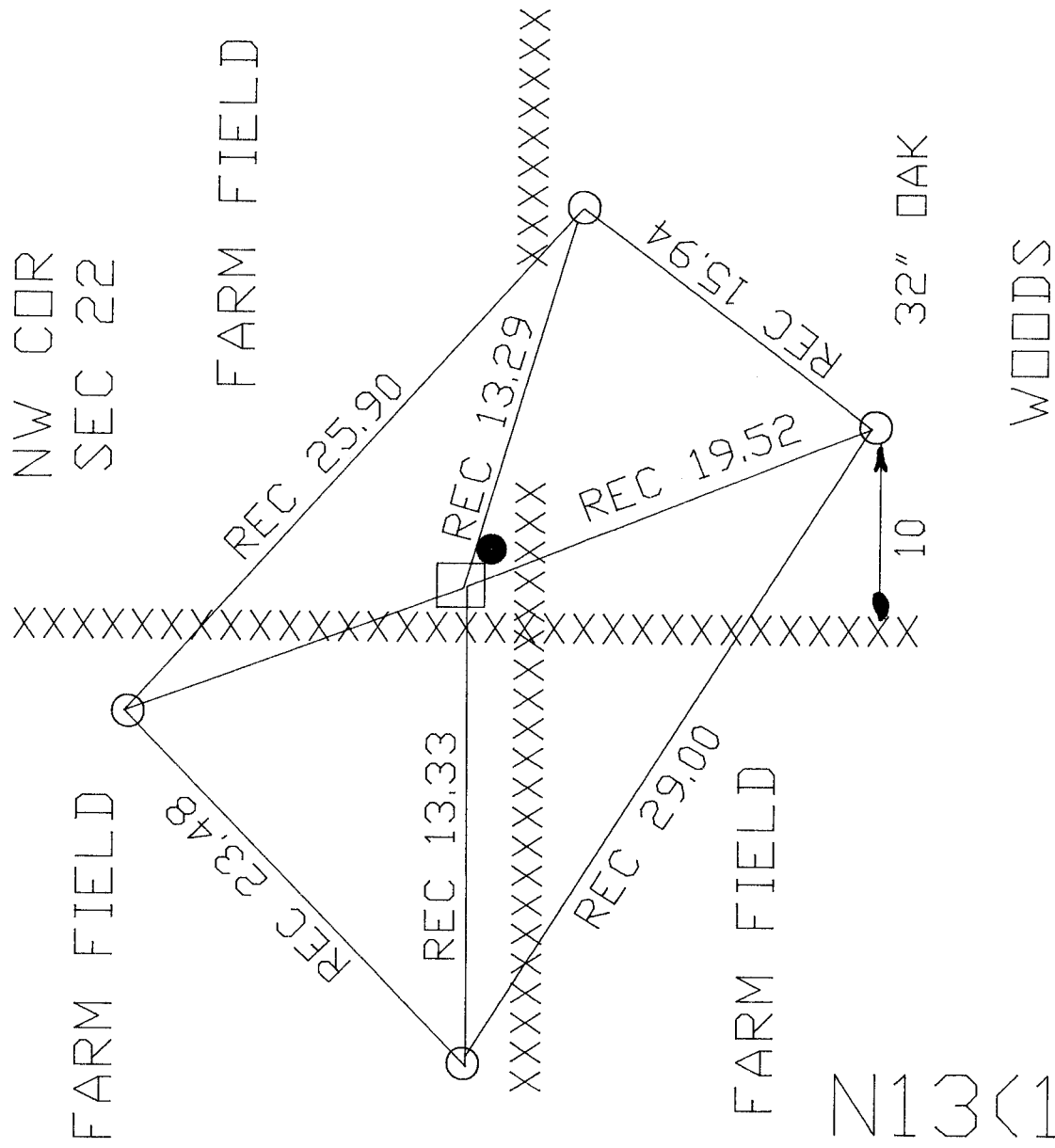
05/08/00

Number of included sheets 1

CORNER CODE N13(1)

A-E 7.08 REQUIREMENT

Donald Barnes
05/08/00



OBSERVATION SHEET

- FD 3/4X24 REROD WITH CAP
- FD CUT LIMESTONE ABOUT 0.2' DEEP
- FD 1 1/2" PIN ABOUT 0.5 ABOVE GROUND.

N13<1>