

# U.S. PUBLIC LAND SURVEY MONUMENT RECORD

For Public Land Survey Corners in:

WI ADMINISTRATIVE CODE A-E 7.08 REQUIREMENT

T. 4 N., R. 10 E

### CORNER CODE INDEX

A	2	3	4	5	6	7	8	9	10	11	12	13	14	15	16	17	18	19	20	21	22	23	24	25
B																								
C	6													3										1
D																								
E																								
F																								
G	1													10										12
H																								
I																								
J																								
K																								
L	18													15										13
M																								
N																								
O																								
P	19													22										24
Q																								
R																								
S																								
T	30													27										25
U																								
V																								
W																								
X	31													34										30
Y																								
Z																								

UNION TWP

ROCK COUNTY WI

IF AVAILABLE  
ROCK COUNTY COORDINATES PREFERRED

North \_\_\_\_\_ Elev. \_\_\_\_\_

East \_\_\_\_\_


Hor. Datum \_\_\_\_\_ Vert. Datum \_\_\_\_\_

LATITUDE \_\_\_\_\_ ELLIPS. HT. \_\_\_\_\_

LONGITUDE \_\_\_\_\_

GPS (X) \_\_\_\_\_ TRAVERSE (X) \_\_\_\_\_

BASED ON THE FOLLOWING CONTROL:

PLACE MONUMENT SYMBOL  AT PROPER LOCATION ON ABOVE INDEX

 CORNER MONUMENT

 WITNESS MONUMENT

(a)

BEARINGS ARE BASED ON:

FIELD BOOK \_\_\_\_\_ PAGE # \_\_\_\_\_

SHEET 1 OF 2

SHOW A PLAN VIEW DRAWING DEPICTING THE CORNER MONUMENT AND SURROUNDING PHYSICAL FEATURES, INCLUDING THE EXCAVATION AREA AND DEPTH.

PLANNING & ZONING COMMITTEE ADOPTED THE ABOVE FORM ON 12/2/1982

CORNER CODE N 15(1)

UN568

*(B) Describe any record evidence, monument evidence, occupational evidence, testimonial evidence or any other material evidence you considered, and whether the monument was found or placed.*

- 1870 RUGER REMONUMENTATION PG 97 EAST ON NORTH LINE OF NW 1/4 SEC 22 A VAR 6-35 OFFSET NORTH 12.54' AT 2635.38 INTERSECTED 1/4 LINE 6.6' SOUTH OF 1/4 COR. FD STUMPS OF BEARING TREES & ESTABLISHED 1/4 COR FROM THEM CORRECTED VAR 7-00  
PG 98 WEST ON NORTH LINE OF NE 1/4 SEC 22 ON A VAR 6-30 OFFSET NORTH 1.32' OFFSET NORTH 20.46' OFFSET NORTH 6.6' AT 2634.72' INTERSECTED 1/4 LINE 13.2' NORTH OF 1/4 COR. ESTABLISHED 1/4 COR FROM STUMPS OF BEARING TREES. CORRECTED VAR 6-10
- 1924 ? VOL 3 PG 124 TIES STATES NOTHING ABOUT MONUMENT SHOWS ON CENTER LINE OF RD. & REFERENCED SAME.
- 1976 BARNES VOL 5 PG 222 DUG & FD NO MONUMENT. GROUND ON BOTH SIDES OF RD INDICATES A CUT FOR ROAD CONSTRUCTION. SET W-1-BERNSTEN ALUM. MON. AT OLD CENTER LINE OF RD & ON LINE WITH FENCE TO THE EAST. SEE COUNTY SURVEY RECORDS VOL 3 PG 124. REFERENCED SAME.
- 1994 BARNES N-15 FD PK & REFERENCED SAME

**FD PK & REFERENCE PIPES**

*C) Was the corner restored through acceptance of (1) an obliterated evidence location, or, (2) a found perpetuated location?*

ACCEPTED FOUND PK.

*D) Describe any material discrepancy between the location of the corner as restored or reestablished and the location of that corner as previously restored or reestablished by distance and direction. Show the discrepancy on the plan view drawing under (a), above. Show the distances between the corner as previously restored or reestablished and (1) the corner as restored or reestablished, and (2) to at least 4 of the witness monuments shown on the drawing in (a), above.*

*(E) Was the corner reestablished through lost corner proportionate methods? If so, show the method, including the directions and distances to other public land survey corners used as evidence or used for proportioning the corner location.*

I, Donald Barnes, hereby certify that the corner location as identified by the corner code index was determined by me under my direction and control and that this U.S. Public Land Survey Monument Record is correct and complete to the best of my knowledge and belief.

Seal

Number of included sheets 1

Emboss

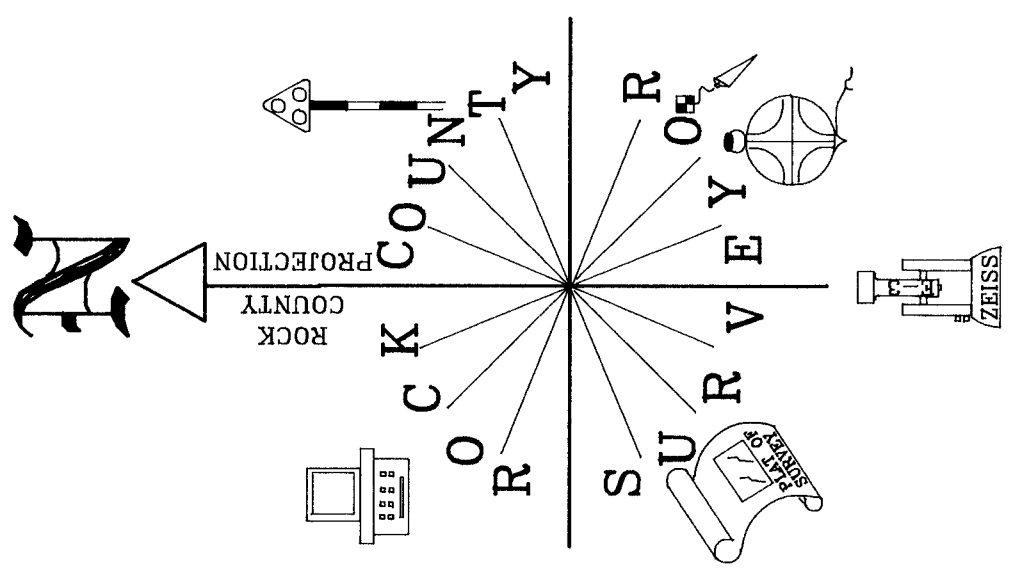
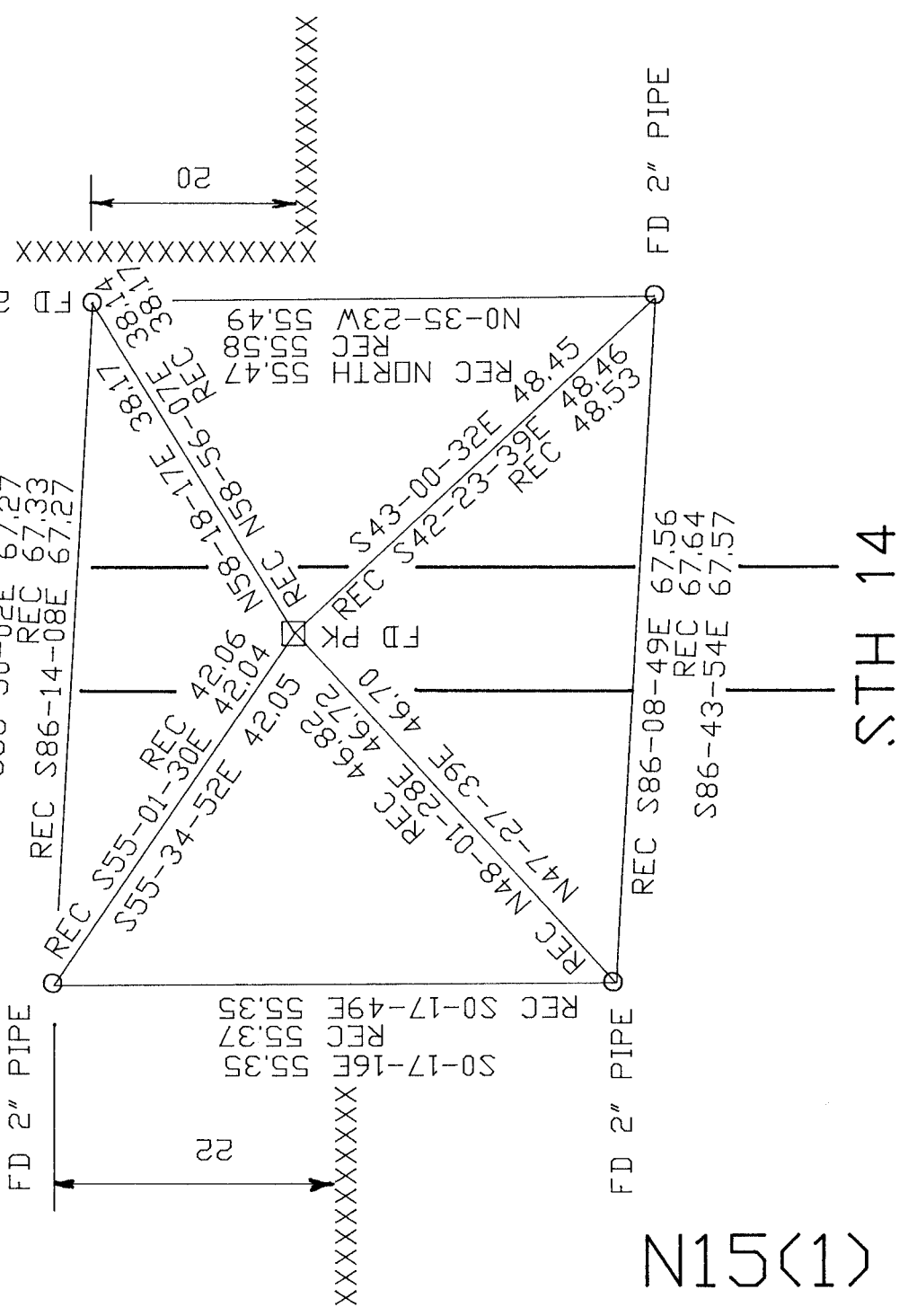
Donald Barnes  
05/08/00

CORNER CODE N-15(1)

A-E 7.08 REQUIREMENT

Donald Barnes  
05/08/00

S 1/4 COR  
SEC 15



OBSERVATION SHEET