

Paper weight-110# (minimum)

ack nonfading ink required

U.S. PUBLIC LAND SURVEY MONUMENT RECORD

For Public Land Survey Corners In:

WI ADMINISTRATIVE CODE A-E 7.08 REQUIREMENT

T. 4 N. R. 10 E. 4th P.M.

REV 10/23/2004

USMONREC.DWG

CORNER CODE INDEX

UNION

TWP

ROCK COUNTY WI

IF AVAILABLE

ROCK COUNTY COORDINATES PREFERRED

1	2	3	4	5	6	7	8	9	10	11	12	13	14	15	16	17	18	19	20	21	22	23	24	25	
A																									A
B																									B
C	6																								C
D																									D
E																									E
F																									F
G	7																								G
H																									H
I																									I
J																									J
K																									K
L	18																								L
M																									M
N																									N
O																									O
P																									P
Q	19																								Q
R																									R
S																									S
T																									T
U																									U
V																									V
W																									W
X																									X
Y																									Y
Z																									Z

North _____ Elev. _____

East _____

Hor. Datum _____ Vert. Datum _____

LATITUDE _____ ELLIPS. HT. _____

LONGITUDE _____

NAD83(91) _____ NETWORK ADJ. YR 2010

GPS (X) _____ TRAVERSE (X) X

BASED ON THE FOLLOWING CONTROL:

1 2 3 4 5 6 7 8 9 10 11 12 13 14 15 16 17 18 19 20 21 22 23 24 25
PLACE MONUMENT SYMBOL AT PROPER LOCATION ON ABOVE INDEX

CORNER MONUMENT

WITNESS MONUMENT

(a)

BEARINGS ARE BASED ON: ROCK COUNTY PROJECTION

FIELD BOOK _____ PAGE # _____

OR OBSERVATION SHEET _____

SHEET 1 OF 3

SHOW A PLAN VIEW DRAWING DEPICTING THE CORNER MONUMENT AND SURROUNDING PHYSICAL FEATURES, INCLUDING THE EXCAVATION AREA AND DEPTH.

PLANNING & ZONING COMMITTEE ADOPTED THIS FORM ON 12/2/1982

CORNER CODE E-17(1)

UN558 E1/4CORSEC15

(B) Describe any record evidence, monument evidence, occupational evidence, testimonial evidence or any other material evidence you considered, and whether the monument was found or placed.

1833 HARRISON (NOV 6TH) T4N R10E 4TH MER NORTH
BETWEEN SECS 14 & 15

1127.28 BURR O 24
2640.00 QUARTER SEC COR {BURR O 12 S69E 25.74';
BURR O 12 N73W 39.6'; BURR O 12 & BURR O
12} MARKED
3475.56 ROAD & W TO DOUGHERTY S
4047.12 BURR O 18
4719.00 ENTER THE SW ARM OF PRAIRIE
5280 COR TO SECS 10,11,14,15 SET A POST &
RAISED A MOUND LAND LEVEL 2ND RATE
TIMBER ?? BURR O. MOSTLY SCRUBS, GRASS, &
WEEDS.

1870 RUGER AUG REMON-100 SOUTH ON EAST LINE OF
NE 1/4 SEC 15 ON A VAR 6-50; OFFSET EAST 20.46'
AT

2665.08 INTERSECTED QUARTER LINE 15.18' EAST OF
QUARTER CORNER. FOUND REMAINS OF BOTH
BEARING STUMPS AND ESTABLISHED QUARTER
CORNER FROM THEM. COR VAR 6-57'
SOUTH ON EAST LINE OF SE 1/4 SEC 15
ON A VAR 7-00' OFFSET WEST 5.94'
OFFSET EAST 15.18' OFFSET EAST 31.02'
AT

2671.68 INTERSECTED SOUTH BOUNDARY LINE 27.72'
EAST OF CORNER. COR VAR 7-16

1970 BATTERMAN VOL 4 PG 440 SET MON BOX OVER CUT STONE
7/10/70 & REFERENCED. NOTE: BOX TAKEN OUT BY COUNTY
HWY DEPT. FB #152 PG 38 DATED 7/10/70. NOTE IN INK:
TAKEN OUT BY COUNTY HWY DEP AS OF 1-1-74. PAGE HAS
ALL REFERENCE PIPES AS SHOWN IN VOL 4 PG 440.
DISTANCE TO NORTH REFERENCE PIPE IS 28.24 AND THE
DISTANCE TO THE FIRST NORTHERN REFERENCE PIPE ON
LINE WITH OTHER 2 NORTHERN REFERENCE PIPES IS 40.00
AND NOT 50.00 AS SHOWN IN RECORDS. THE БЕЛОИТ
RECORD SHOWS A PIPE THAT IS 28.24 NORTH OF THE
SECTION CORNER. [THE 28.24 DISTANCE IS SHOWN ON
COMBS L-17 AS 28.17'. I BELIEVE HE FD THE PIPE AND HIS
STATEMENT THE 50' DIMENSION WAS IN ERROR IS
INCORRECT BECAUSE THE PIPE WAS NOT SHOWN ON THE
JANESVILLE RECORD.]

1974 SCHROEDER CSM VOL 3 PG 297 STATES NOTHING ABOUT
MON. SET PIPE 33.00 NORTH OF SEC COR ON SEC LINE.

1987 SCHROEDER #12785 STATES NOTHING ABOUT MON. WEST
2616.00 TO PK @ CEN OF SEC 15, NO-17W TO N 1/4 COR
SEC 15. ANGLE 90-17-XX @ CEN SEC 15 FROM N 1/4 COR
SEC 15 TO E 1/4 COR SEC 15

1988 COMBS #12526 WEST 2616.0 TO N/S 1/4 LINE.

2009 COMBS L-17 SET R/R SPIKE AT THE INTERSECTION OF A
STRAIGHT LINE EXTENDED, FROM THE W 1/4 COR OF SEC
15-4-10, TO A POINT 33 FEET SOUTH OF AN IRON PIPE
FOUND NEAR THE SE CORNER OF COMBS SURVEY #88-
240, AT A DISTANCE OF 57.88 FEET FROM THE NW
REFERENCE PIPE OF COUNTY SURVEYOR RECORDS, VOL 4
PG 440. I BELIEVE THE 50 FOOT DIMENSION SHOWN TO
THE 1ST REFERENCE MONUMENT ON COUNTY SURVEYOR
RECORD VOL 4 PG 440 TO BE WRONG. REFERENCED SAME
FD NW, N, & SE REFERENCE PIPES.

2009 COMBS CSM VOL 33 PG 35 SET R/R SPIKE. NO-15-05E
2671.91 TO CUT STONE @ NE COR SEC 15 & NB9-27-37W

Donald J. Barnes
Emboss

4/09/2012

SHEET 1 OF 3

CORNER CODE L-17(1)

UN558 E1/4CORSEC15

5264.47 TO CUT LS @ W 1/4 COR SEC 15. NO-15-05W 33.00 TO LOT COR.

CALLS FOR 402.68 [REC 403.0] FROM SCHROEDER'S LOT COR TO PIPE ON R/W LINE.

2009 COMBS #16188 FD R/R SPIKE NO-15-05E TO FD CUT STONE @ NE COR SEC 15 & S89-25-37W 5264.47 TO W 1/4 COR SEC 15

FD R/R SPIKE COMBS SET IN 2009 & REFERENCE MONUMENTS. THE 1970 BATTERMAN DISTANCE OF 28.24 TO THE NORTHERN PIPE IS SHOWN ONLY IN THE BELDIT RECORDS. FB #152 PG 38 DATED 7/10/70 CALLS FOR 28.24. THE FIELD BOOK CALLS FOR 40.00 AND NOT 50.00 AS IN RECORDS. I FOUND ALL 3 REFERENCE PIPES. THE AREA NEAR THE R/W PIPE & BATTERMAN'S REFERENCE PIPE APPEARS TO BE DISTURBED BY THE INSTALLATION OF THE TELEPHONE PED. COMBS CALLS FOR THE DISTANCE FROM SCHROEDER'S LOT PIPE TO THIS LOT PIPE ON THE R/W LINE TO BE SHORT BY 0.32'. THIS SUPPORTS THE DISTURBANCE OF THE 2 PIPES NEAR THE PED. THE FOUND PIPE N3-22-48W 28.17 OF THE CUT LS WAS DISTURBED SINCE I FOUND IT IN THE FALL OF 2011.

DUG & FD CUT LS 1' 3" BELOW PVMT SURFACE. SET ALUM RISERS ON TOP OF LS. PLACED 2 MAGNETS ON TOP OF L.S. NEAR PVMT CENTER & ON LINE WITH N/S FENCE.

C) Was the corner restored through acceptance of (1) an obliterated evidence location, or, (2) a found perpetuated location?

ACCEPTED POSITION OF THE CUT LIMESTONE.

D) Describe any material discrepancy between the location of the corner as restored or reestablished and the location of that corner as previously restored or reestablished by distance and direction. Show the discrepancy on the plan view drawing under (a), above. Show the distances between the corner as previously restored or reestablished and (1) the corner as restored or reestablished, and (2) to at least 4 of the witness monuments shown on the drawing in (a), above.

DISCREPANCY IS SHOWN IN DRAWING. THE CUT LS IS S18-40-09W 0.12' FROM THE FD R/R SPIKE.

(E) Was the corner reestablished through lost corner proportionate methods? If so, show the method, including the directions and distances to other public land survey corners used as evidence or used for proportioning the corner location.

I, **Donald Barnes**, hereby certify that the corner location as identified by the corner code index was determined by me under my direction and control and that this U.S. Public Land Survey Monument Record is correct and complete to the best of my knowledge and belief.



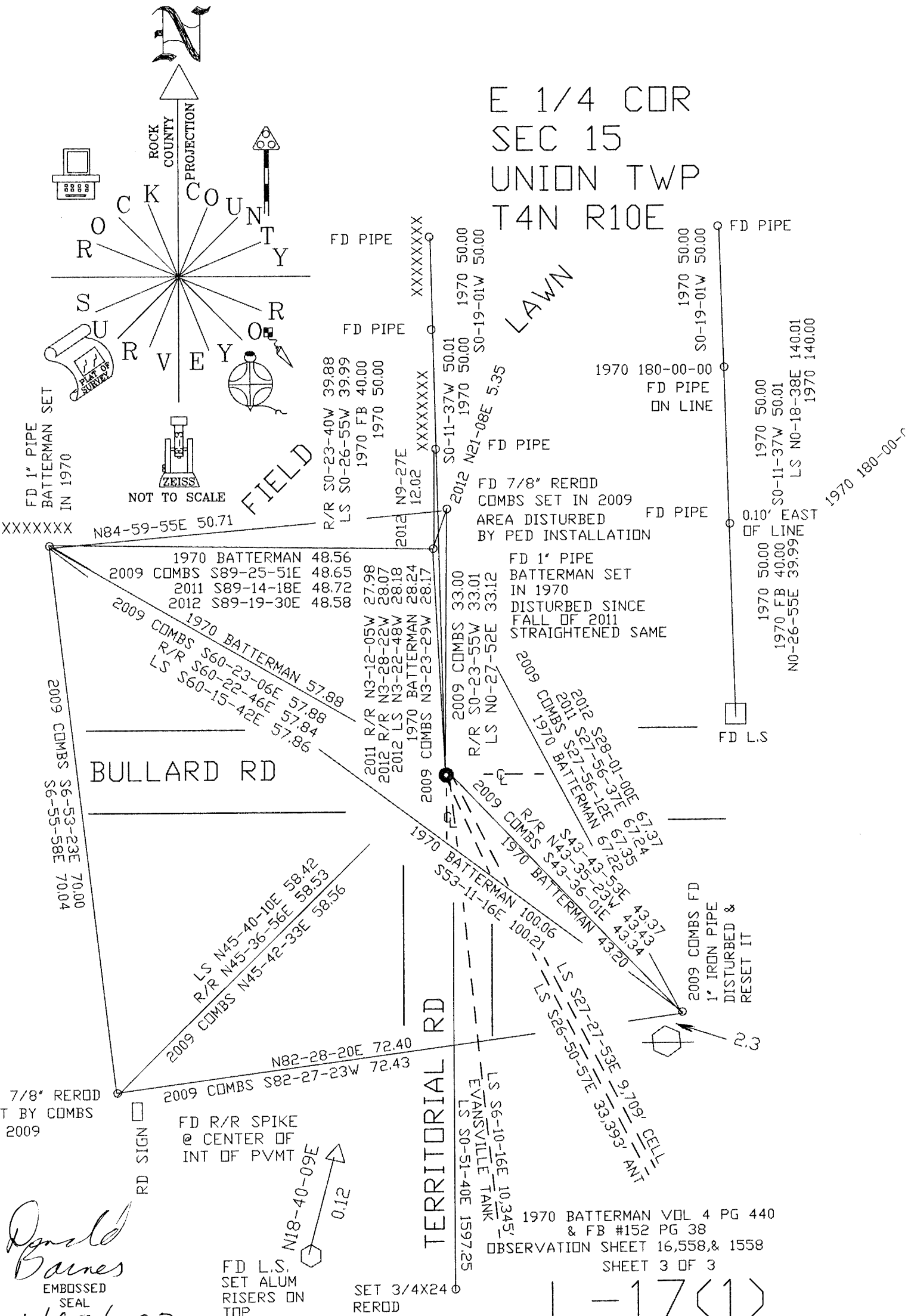
SHEET 2 OF 3

4/09/2012

CORNER CODE L-17(1)

A.E. 7.08 REQUIREMENT

E 1/4 COR
SEC 15
UNION TWP
T4N R10E



Donald Barnes
EMBOSSED SEAL
4/09/2012

SET 3/4X24 REROD

L-17(1)