

# U.S. PUBLIC LAND SURVEY MONUMENT RECORD

For Public Land Survey Corners In: WI ADMINISTRATIVE CODE A-E 7.08 REQUIREMENT

T. 1 N. - R. 10 E. of the 4th P.M.

### CORNER CODE INDEX

(PLACE "◆" SYMBOL AT PROPER PLSS CORNER LOCATION)

A	1	2	3	4	5	6	7	8	9	10	11	12	13	14	15	16	17	18	19	20	21	22	23	24	25	A
B																										B
C	6						5					4					3				2	◆	1			C
D																										D
E																										E
F																										F
G	7						8					9					10				11		12			G
H																										H
J																										J
K																										K
L	18						17					16					15				14		13			L
M																										M
N																										N
O																										O
P	19						20					21					22				23		24			P
Q																										Q
R																										R
S																										S
T	30						29					28					27				26		25			T
U																										U
V																										V
W																										W
X	31						32					33					34				35		36			X
Y																										Y
Z																										Z
	1	2	3	4	5	6	7	8	9	10	11	12	13	14	15	16	17	18	19	20	21	22	23	24	25	

AVON TWP  
ROCK COUNTY WI

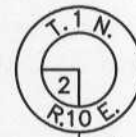
### COORDINATES

(GNSS DERIVED VIA WISCORS)

NORTHING: 231228.43      ELEV: N/A  
EASTING: 427367.04

Hor. Datum: WCCS-ROCK, (NA2011)

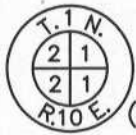
Vertical Datum: NAVD 88, (If applicable)



Cast iron monument found \_\_\_\_\_

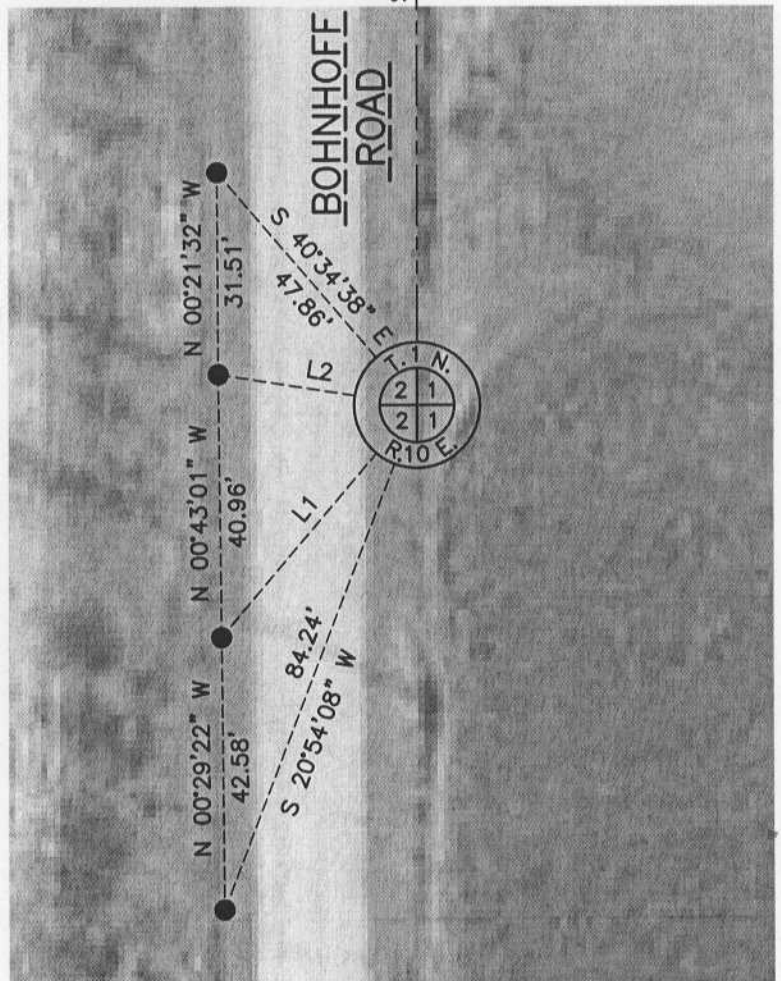
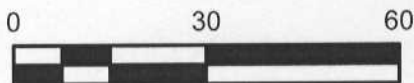
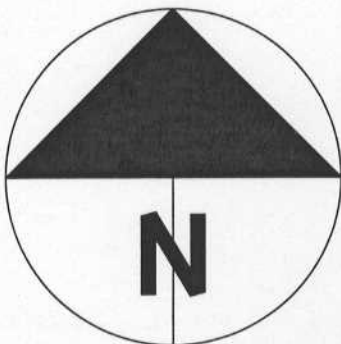
**(a) LEGEND**

● - 3/4" x 24" REBAR SET W/RED CAP SET



— ALUMINUM MONUMENT SET WITH CAP  
(Replaces a broken aluminum monument surveyed in same location)

LINE	BEARING	DISTANCE
L1	S 40°06'19" W	47.22'
L2	N 81°06'10" W	31.31'



***B) Describe any record evidence, monument evidence, occupational evidence, testimonial evidence or any other material evidence you considered, and whether the monument was found or placed.***

I found the aluminum monument, (broken @ break off point), per the V. 5, Pg. 212 record, (Barnes – 1976). In addition, I found an undocumented pipe, (not shown & 3.5' south of the broken aluminum), along with other monuments to the North from past surveys. Within themselves, the broken aluminum, documented NE corner of Section 2 and other monuments check within expected tolerances. Additional fieldwork and analysis of past computations may or may not lead to the corner location computed to the south; my preliminary work indicates that may be the case. However, any computations are not equivalent to finding the original corner and the Barnes corner has been used and accepted for 30 years, +/- . Given the aluminum has been used on several past surveys, I accept its location. I set a new Berntsten aluminum monument in its place at-grade.

***C) Was the corner restored through acceptance of (1) an obliterated evidence location, or, (2) a found perpetuated location?***

Found perpetuated location.

***D) Describe any material discrepancy between the location of the corner as restored or reestablished and the location of that corner as previously restored or reestablished by distance and direction. Show the discrepancy on the plan view drawing under (a), above. Show the distances between the corner as previously restored or reestablished and (1) the corner as restored or reestablished, and (2) to at least 4 of the witness monuments shown on the drawing in (a), above.***

I did not find a discrepancy between the corner restored and the previously documented corner location, (1976). A pipe of unknown origin exists 3.5', +/-, south of the monument. Additionally, analysis of the SE and NE corners of section 2 may or may not, upon further fieldwork and verification, result in the corner being computed south of its current location. Given the passage of time, acceptance of the aluminum monument and lack of an original corner, I accept the aluminum monument.

***(E) Was the corner reestablished through lost corner proportionate methods? If so, show the method, including the directions and distances to other public land survey corners used as evidence or used for proportioning the corner location.***

N/A

*I, Jason R. Houle, hereby certify that the corner location as identified by the corner code index was determined by me under my direction and control and that this U.S. Public Land Survey Monument Record is correct and complete to the best of my knowledge and belief.*

**CORNER CODE: C-21  
(A.E. 7.08 REQUIREMENT)**

