

U.S. PUBLIC LAND SURVEY MONUMENT RECORD

For Public Land Survey Corners in:
T. 1 N., R. 10 E

WI ADMINISTRATIVE CODE A-E 7.08 REQUIREMENT

CORNER CODE INDEX

A	1	2	3	4	5	6	7	8	9	10	11	12	13	14	15	16	17	18	19	20	21	22	23	24	25
B	6	5	4	3	2	1																			
C	1	8	9	10	11	12																			
D	18	11	10	15	14	13																			
E	19	20	21	22	23	24																			
F	30	29	28	27	26	25																			
G	31	32	33	34	35	36																			
H																									
I																									
J																									
K																									
L																									
M																									
N																									

AVON TWP

ROCK COUNTY WI

IF AVAILABLE
ROCK COUNTY COORDINATES PREFERRED

North _____ Elev. _____

East _____

Hor. Datum _____ Vert. Datum _____

LATITUDE _____ ELLIPS. HT. _____

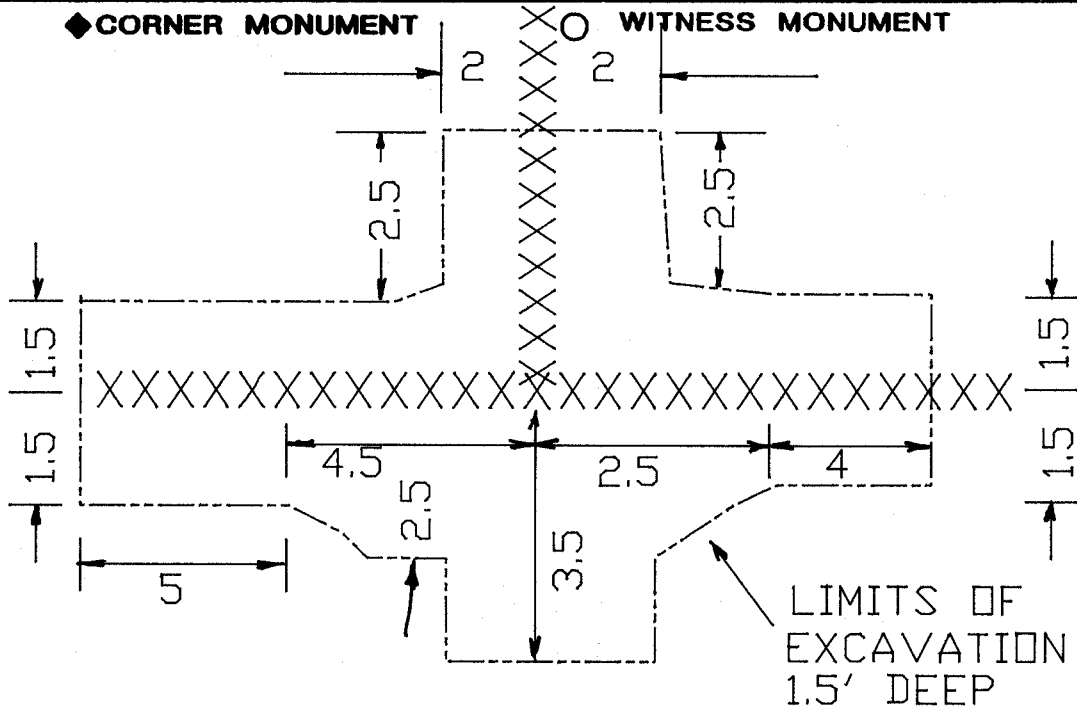
LONGITUDE _____

GPS (X) _____ TRAVERSE (X) _____

BASED ON THE FOLLOWING CONTROL:

PLACE MONUMENT SYMBOL  AT PROPER LOCATION ON ABOVE INDEX

BEARINGS ARE BASED ON: ASSUMED



FB #2 PG 64
FENCE INTERSECTION IS
S0-05-15E 1329.6 OF
W 1/4 COR SEC 24

W 1/16TH OF
SW 1/4 OF SEC
24

FIELD BOOK 2 PAGE # 64

SHEET 1 OF 2

SHOW A PLAN VIEW DRAWING DEPICTING THE CORNER MONUMENT AND SURROUNDING PHYSICAL FEATURES, INCLUDING THE EXCAVATION AREA AND DEPTH.

PLANNING & ZONING COMMITTEE ADOPTED THE ABOVE FORM ON 12/2/1982

CORNER CODE Q-21

(B) Describe any record evidence, monument evidence, occupational evidence, testimonial evidence or any other material evidence you considered, and whether the monument was found or placed.

1870 RUGER VOL 2 PG 48 SET HH 14X9X7 & SURROUNDED IT WITH 3 LIMESTONES & 1 HARDHEAD STONE.

DUG 1.5' DEEP & FOUND NOTHING. THERE WERE NO STONES. FIELD WAS GOOD DEEP BLACK DIRT. UNLESS STONE WAS REMOVED IT SHOULD HAVE BEEN THERE.

C) Was the corner restored through acceptance of (1) an obliterated evidence location, or, (2) a found perpetuated location?

NO. DID NOT RESTORE CORNER.

D) Describe any material discrepancy between the location of the corner as restored or reestablished and the location of that corner as previously restored or reestablished by distance and direction. Show the discrepancy on the plan view drawing under (a), above. Show the distances between the corner as previously restored or reestablished and (1) the corner as restored or reestablished, and (2) to at least 4 of the witness monuments shown on the drawing in (a), above.

(E) Was the corner reestablished through lost corner proportionate methods? If so, show the method, including the directions and distances to other public land survey corners used as evidence or used for proportioning the corner location.

I, Donald Barnes, hereby certify that the corner location as identified by the corner code index was determined by me under my direction and control and that this U.S. Public Land Survey Monument Record is correct and complete to the best of my knowledge and belief.

Donald Barnes
Seal

APR. 16, 1998

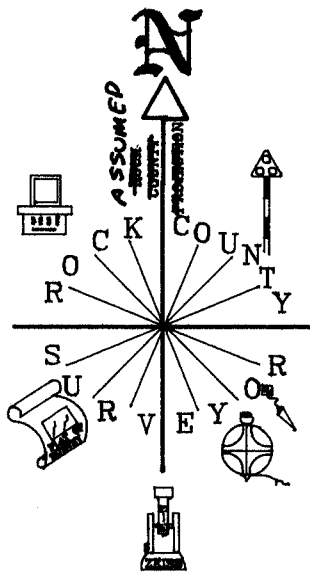
Number of included sheets _____

emboss

CORNER CODE

A-E 7.08 REQUIREMENT

Q 21



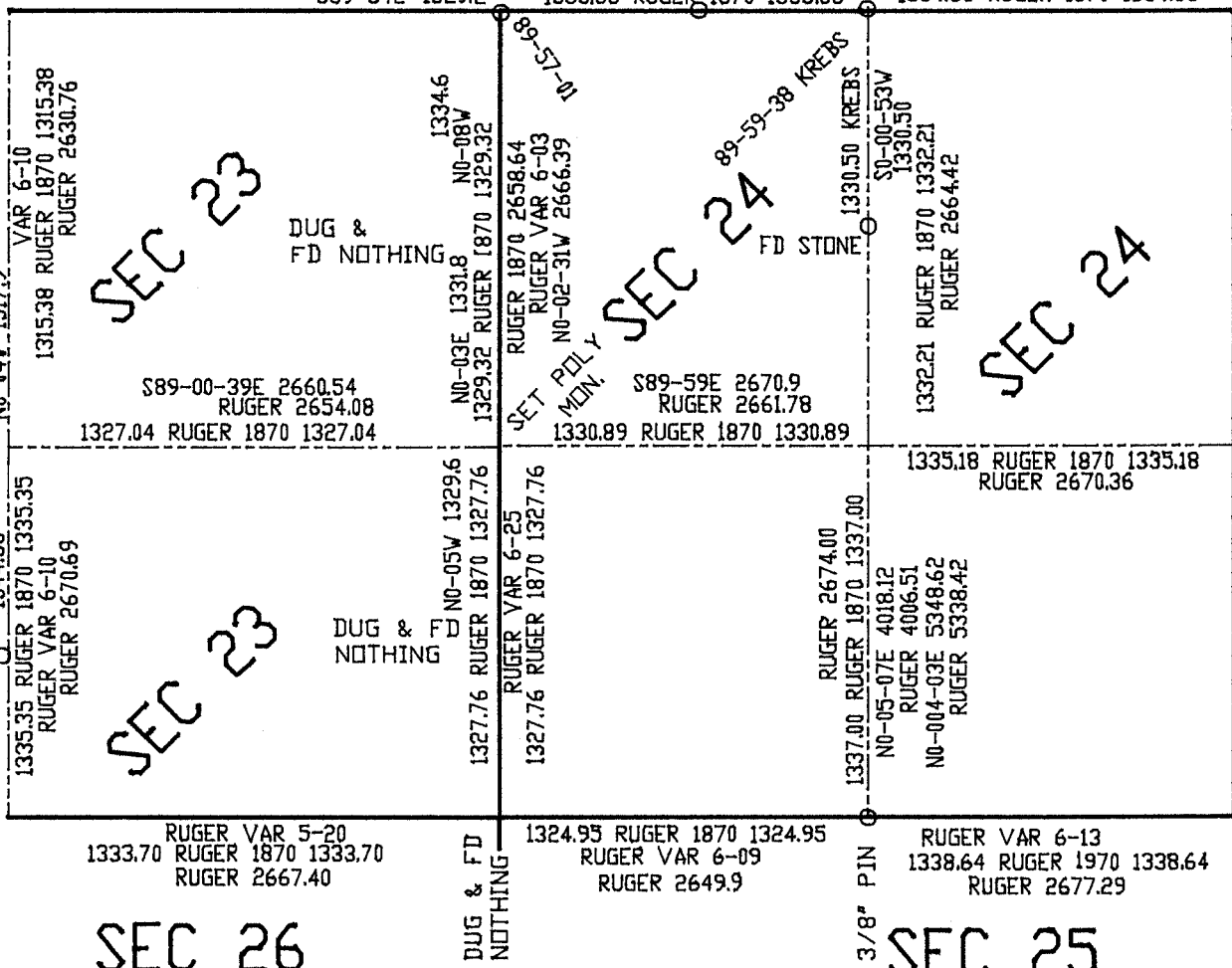
SEC 14

RUGER 2655.84
 RUGER 1871 VAR 5-22
 1327.92 RUGER 1871 1327.92
 1327.92 RUGER 1870 1327.92 VAR 5-32
 S89-34E 1329.2

S89-59-30E 2675.22
 1337.46 1337.76
 S89-59-32E S89-59-28E
 KREBS 2675.22
 1337.41 KREBS 1337.76
 1337.43 LEE 1974 1337.92
 RUGER 2667.72
 RUGER VAR 5-58
 1333.86 RUGER 1870 1333.86

SEC 13

LEE 1974 2675.35
 RUGER VAR 6-15
 RUGER 2668.72
 1334.36 RUGER 1870 1334.36



Donald Barnes
 April 16, 1998