

# U.S. PUBLIC LAND SURVEY MONUMENT RECORD

For Public Land Survey Corners in:

WI ADMINISTRATIVE CODE A-E 7.08 REQUIREMENT

T. 1N., R. 10E

CORNER CODE INDEX

A	1	2	3	4	5	6	7	8	9	10	11	12	13	14	15	16	17	18	19	20	21	22	23	24	25
B	6	5	4	3	2	1																			
C																									
D																									
E																									
F	1	8	9	10	11	12																			
G																									
H																									
I	18	17	16	15	14	13																			
J																									
K																									
L																									
M																									
N																									
O																									
P	19	20	21	22	23	24																			
Q																									
R																									
S																									
T	30	29	28	27	26	25																			
U																									
V																									
W																									
X	31	32	33	34	35	36																			
Y																									
Z																									

AVON TWP  
ROCK COUNTY WI

IF AVAILABLE  
ROCK COUNTY COORDINATES PREFERRED

North \_\_\_\_\_ Elev. \_\_\_\_\_

East \_\_\_\_\_

Hor. Datum \_\_\_\_\_ Vert. Datum \_\_\_\_\_

LATITUDE \_\_\_\_\_ ELLIPS. HT. \_\_\_\_\_

LONGITUDE \_\_\_\_\_

GPS (X) \_\_\_\_\_ TRAVERSE (X) \_\_\_\_\_

BASED ON THE FOLLOWING CONTROL:

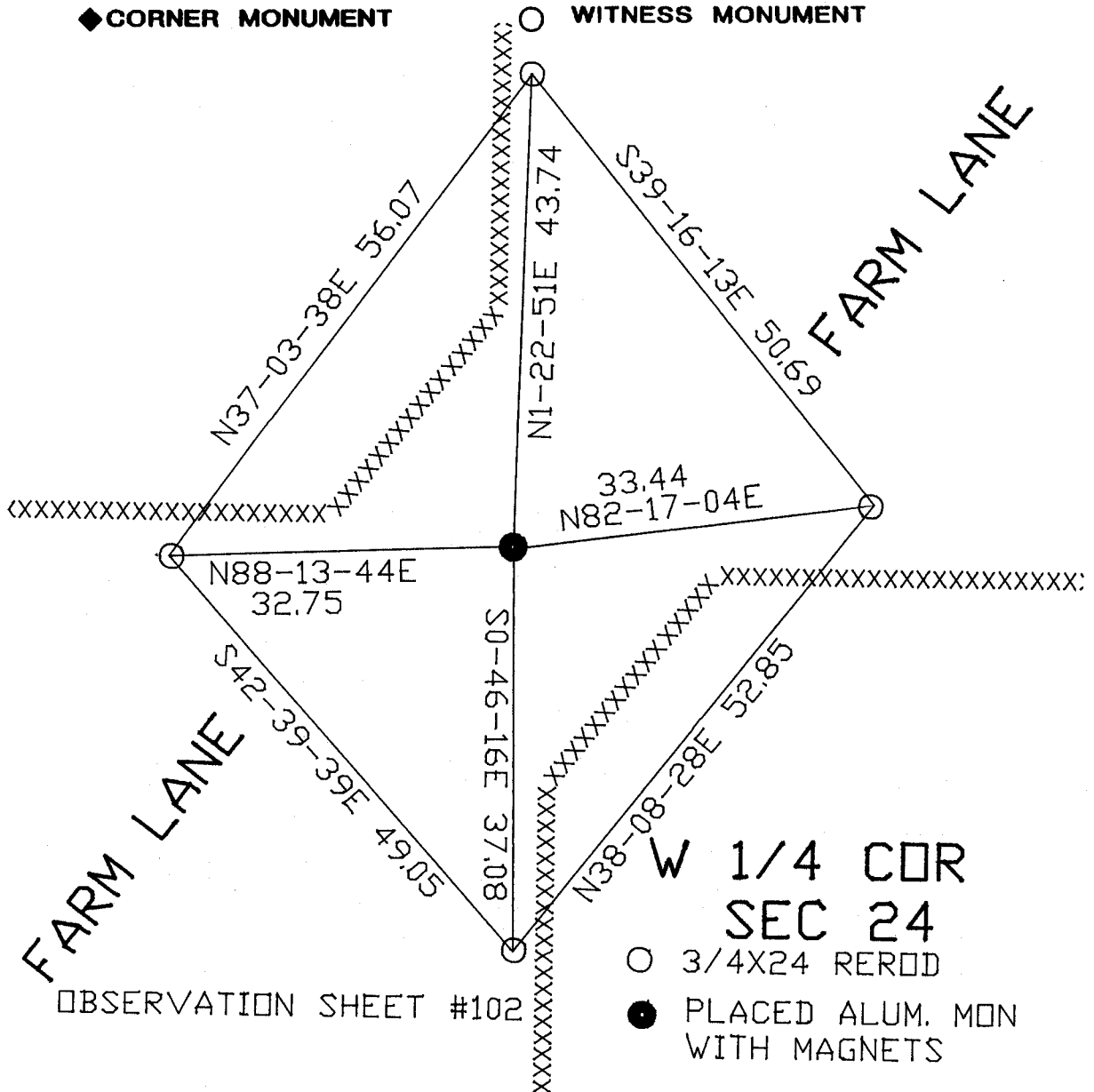
PLACE MONUMENT SYMBOL  $\blacklozenge$  AT PROPER LOCATION ON ABOVE INDEX

$\blacklozenge$  CORNER MONUMENT

$\circ$  WITNESS MONUMENT

(a)

BEARINGS ARE BASED ON: ASSUMED



$\circ$  3/4X24 REROD

$\blacklozenge$  PLACED ALUM. MON WITH MAGNETS

FIELD BOOK \_\_\_\_\_ PAGE # \_\_\_\_\_

SHEET 1 OF 2

SHOW A PLAN VIEW DRAWING DEPICTING THE CORNER MONUMENT AND SURROUNDING PHYSICAL FEATURES, INCLUDING THE EXCAVATION AREA AND DEPTH.

PLANNING & ZONING COMMITTEE ADOPTED THE ABOVE FORM ON 12/2/1982

CORNER CODE p21

AV579

(B) Describe any record evidence, monument evidence, occupational evidence, testimonial evidence or any other material evidence you considered, and whether the monument was found or placed.

1834 HARRISON NORTH BETWEEN SEC 23 & 24

2310 BUR OAK 14 & LEAVE MARSH

2640 QUARTER SEC COR.

BUR OAK 12 S29W 25.08'

BUR OAK 10 N52W 16.5'

3057.12 BUR OAK 18

4785 NORTH & NE EXT. OF MARSH

5016 LEAVE SAME CRS S & SE

5280 COR SEC 12,14,23, 24

BUR OAK 12 S61E 48.48'

BUR OAK 10 N79E 15.18'

BUR OAK 12 S65W 46.2'

BUR OAK 10 N73W 42.9

1870 RUGER VOL 2 PG 48 FOUND OLD STAKE & STUMPS OF BEARING TREES. SET HARDHEAD STONE 16X14X8 SURROUNDED IT WITH SEVERAL SMALL HARD HEADSTONE. CALLS FOR 1330.89 TO 1/16TH COR TO EAST, 1329.32 TO 1/16TH COR TO NORTH, & 1327.76 TO 1/16TH COR TO SOUTH.

1870 RUGER VOL 2 PG 49 REFERS TO SEC 24 AVON PG 31(48). CALLS FOR 1327.04 TO 1/16TH COR TO WEST & 2654.08 TO CENTER OF SEC 23, 1327.76 TO 1/16H COR TO SOUTH, & 1329.33 TO 1/16TH COR TO NORTH.

DUG & FOUND BED ROCK AT SURFACE. APPEARS THAT THE TOP SOIL WAS WORN AWAY SINCE IT WAS A FARM ENTRANCE. PLACED ALUMINUM MON WITH MAGNETS ON THE SIDE. ACCEPTED INTERSECTION OF FENCES AS LOCATION OF THE 1/4 CORNER. THIS IS HARMONY WITH RECORD DISTANCES AND OCCUPATION LINES.

C) Was the corner restored through acceptance of (1) an obliterated evidence location, or, (2) a found perpetuated location?  
RESTORED CORNER THROUGH ACCEPTANCE OF OBLITERATED EVIDENCE LOCATION.

D) Describe any material discrepancy between the location of the corner as restored or reestablished and the location of that corner as previously restored or reestablished by distance and direction. Show the discrepancy on the plan view drawing under (a), above. Show the distances between the corner as previously restored or reestablished and (1) the corner as restored or reestablished, and (2) to at least 4 of the witness monuments shown on the drawing in (a), above.

(E) Was the corner reestablished through lost corner proportionate methods? If so, show the method, including the directions and distances to other public land survey corners used as evidence or used for proportioning the corner location.

I, Donald Barnes, hereby certify that the corner location as identified by the corner code index was determined by me under my direction and control and that this U.S. Public Land Survey Monument Record is correct and complete to the best of my knowledge and belief.

*Donald Barnes*  
April 16, 1998

Number of included sheets \_\_\_\_\_

emboss

CORNER CODE

A-E 7.08 REQUIREMENT

P 21

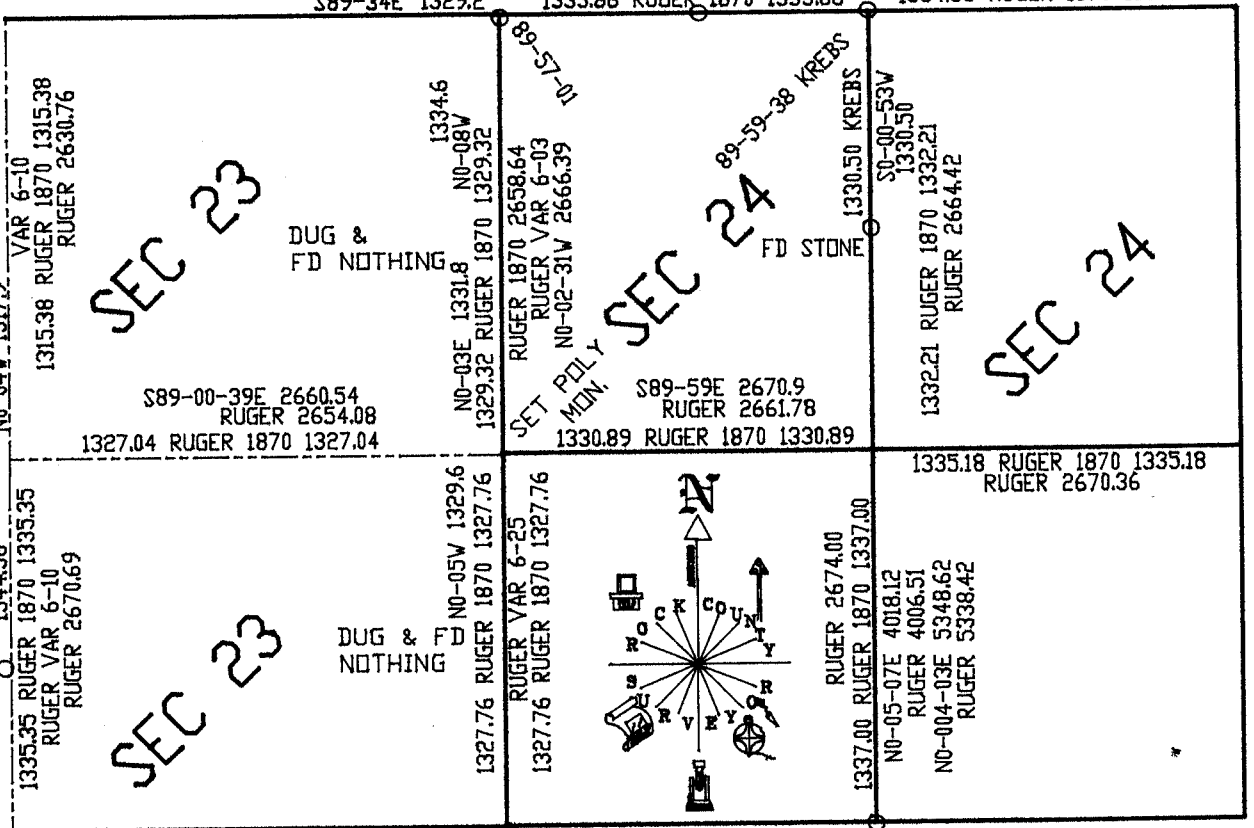
SEC 14

RUGER 2655.84  
RUGER 1871 VAR 5-22  
1327.92 RUGER 1871 1327.92  
1327.92 RUGER 1870 1327.92 VAR 5-32  
S89-34E 1329.2

S89-59-30E 2675.22  
1337.46 1337.76  
S89-59-32E S89-59-28E  
KREBS 2675.22  
1337.41 KREBS 1337.76  
1337.43 LEE 1974 1337.92  
RUGER 2667.72  
RUGER VAR 5-58  
1333.86 RUGER 1870 1333.86

SEC 13

LEE 1974 2675.35  
RUGER VAR 6-15  
RUGER 2668.72  
ALUM 1334.36 RUGER 1870 1334.36



Donald Barnes  
April 16, 1998

SEC 26

SEC 25