

U.S. PUBLIC LAND SURVEY MONUMENT RECORD

For Public Land Survey Corners in:

WI ADMINISTRATIVE CODE A-E 7.08 REQUIREMENT

T. 1N., R. 10E

CORNER CODE INDEX

A	1	2	3	4	5	6	7	8	9	10	11	12	13	14	15	16	17	18	19	20	21	22	23	24	25
B																									
C	6																								
D																									
E																									
F	1																								
G		8																							
H																									
J																									
K	18																								
L		11																							
M																									
N																									
O	19																								
P		20																							
Q																									
R																									
S	30																								
T		29																							
U																									
V																									
W																									
X	31																								
Y		32																							
Z																									

PLACE MONUMENT SYMBOL AT PROPER LOCATION ON ABOVE INDEX

Avon TWP

ROCK COUNTY WI

IF AVAILABLE
ROCK COUNTY COORDINATES PREFERRED

North 223, 237.56 Elev. _____

East 427, 315.66

Hor. Datum _____ Vert. Datum _____

LATITUDE _____ ELLIPS. HT. _____

LONGITUDE _____

GPS (X) _____ TRAVERSE (X) _____

BASED ON THE FOLLOWING CONTROL:

NEWARK TWP PROJ.

CORNER MONUMENT

WITNESS MONUMENT

(a)

BEARINGS ARE BASED ON:

OBSERVATION SHEET 40

FIELD BOOK _____ PAGE # _____

SHEET 1 OF 34

SHOW A PLAN VIEW DRAWING DEPICTING THE CORNER MONUMENT AND SURROUNDING PHYSICAL FEATURES, INCLUDING THE EXCAVATION AREA AND DEPTH.

PLANNING & ZONING COMMITTEE ADOPTED THE ABOVE FORM ON 12/2/1982

CORNER CODE V-21

AV551

(B) Describe any record evidence, monument evidence, occupational evidence, testimonial evidence or any other material evidence you considered, and whether the monument was found or placed.

1834 HARRISON NORTH BETWEEN SECS 13 & 14

902.88 W.O. 18

2640 QUARTER SEC COR BUR O 12 S10W 26.4' BURR O 18
BURR O 12, BURR O 18

2910.6 BURR O 12

5280 COR TO SEC 11,12,13,14 BURR O 12 S22E 4.62',
BURR O 12 S25W 7.26', BURR O 10 N41E 31.68'
BURR O 10 S45W 15.84'

EAST BETWEEN SECS 12 & 13

2640 TEMPY 1/4 P & ENTER MARSH

5306.4 INT. E BDY. 13.2' S OF P. LAND 1ST 1/2 LEVEL 2ND RATE
TIMBER BURR O, 2ND 1/2 LEVEL & WET 3RD RATE

WEST COR. WEST BET 12 & 13

2653.2 QUARTER SEC COR. BURR O 12 N47E 59.4', BURR O
12 N80W 231' BURR O 12, BURR O 12 } MARKED

5306.4 SEC COR.

NORTH BETWEEN SECS 11 & 12

198 LEAVE TIMBER & ENTER MARSH

2178 LEAVE MARSH & TIMBER THE WESTERN EXTREMITY OF
POINT OF TIMBER

2640 LEAVE SAME SET QUARTER SEC COR BURR O 18 S25E
118.8'

3960 BEND OF BROOK EASTERLY

5280 COR TO 12,11,12 RED DA 18 S89W 483.12, BURR O 8
N72W 363'

EAST ON RANDOM BETWEEN SEC 11 & 14

2640 TEMPY 1/4 P

3432 ENTER MARSH BEARING N.W.

3630 SPRING CRS N.W.

5148 LEAVE MARSH

5266.8 INT. E. BDY 33' N OF P. LAND 1ST 1/2 SAME AS BEFORE
2ND 1/2 LEVEL & WET 3RD RATE

WEST COR WEST

2633.4 QUARTER SEC COR {BUR O 12 N18E 29.7', BURR O 10
S51W 44.22'} BURR O 12, BURR O 10} MARKED

5266.8 INT. SEC LINE

1871 RUGER VOL 2 PG 65 FD OLD STAKE & STUMPS OF SE BT, SW &
NW BT. DROVE STAKE DEEP & SET LS 11X10X4 ON TOP OF IT.

1871 RUGER VOL 2 PG 73 & 74 FD L.S. & STUMPS OF NW, SW & SE
BTS. SEC SEC 12 AVON PG40 VAR 5-55 2649.90' TO W 1/4
COR SEC 13

1974 LEE VOL 5 PG 44 STATES NOTHING 2642.54 TO N 1/4 COR SEC
14 & 2652.26 TO E 1/4 COR SEC 14

1974 KIENBAUM MAP#57 COR ON LINE & PRORATED FROM SE COR
& E 1/4 COR SEC 14. (SET NOTHING) 2652.26 TO E 1/4 COR
SEC 14, 2642.54 TO N 1/4 COR SEC 14, ANGLE 91-52-25 FROM
E 1/4 COR TO N 1/4 COR SEC 14 @ NE COR SEC 14, ANGLE 89-
15-35 FROM NE COR SEC 14 TO CENTER SEC 14 @ N 1/4 COR
SEC 14, ANGLE 88-13-50 FROM GEN. SEC 14 TO NE COR SEC
14 @ E 1/4 COR SEC 14

1977 BARNES VOL 5 PG 240 FD BROKEN L.S. 10X11X4 & REF.
SAME

SOUTH FENCE LINE AND REF. PIPE IS GONE. FENCE INT. HAS BEEN
REMOVED. SET POLY MON. FROM 3 FD REFERENCE TIES.

Donald Barnes

6-17-03

SHEET 1 OF 3 J
CORNER CODE 4-21

AV551

C) Was the corner restored through acceptance of (1) an obliterated evidence location, or, (2) a found perpetuated location?

ACCEPTED OBLITERATED EVIDENCE LOCATION.

D) Describe any material discrepancy between the location of the corner as restored or reestablished and the location of that corner as previously restored or reestablished by distance and direction. Show the discrepancy on the plan view drawing under (a), above. Show the distances between the corner as previously restored or reestablished and (1) the corner as restored or reestablished, and (2) to at least 4 of the witness monuments shown on the drawing in (a), above.

NONE

(E) Was the corner reestablished through lost corner proportionate methods? If so, show the method, including the directions and distances to other public land survey corners used as evidence or used for proportioning the corner location.

NO

I, **Donald Barnes**, hereby certify that the corner location as identified by the corner code index was determined by me under my direction and control and that this U.S. Public Land Survey Monument Record is correct and complete to the best of my knowledge and belief.

Seal
Donald Barnes

Emboss

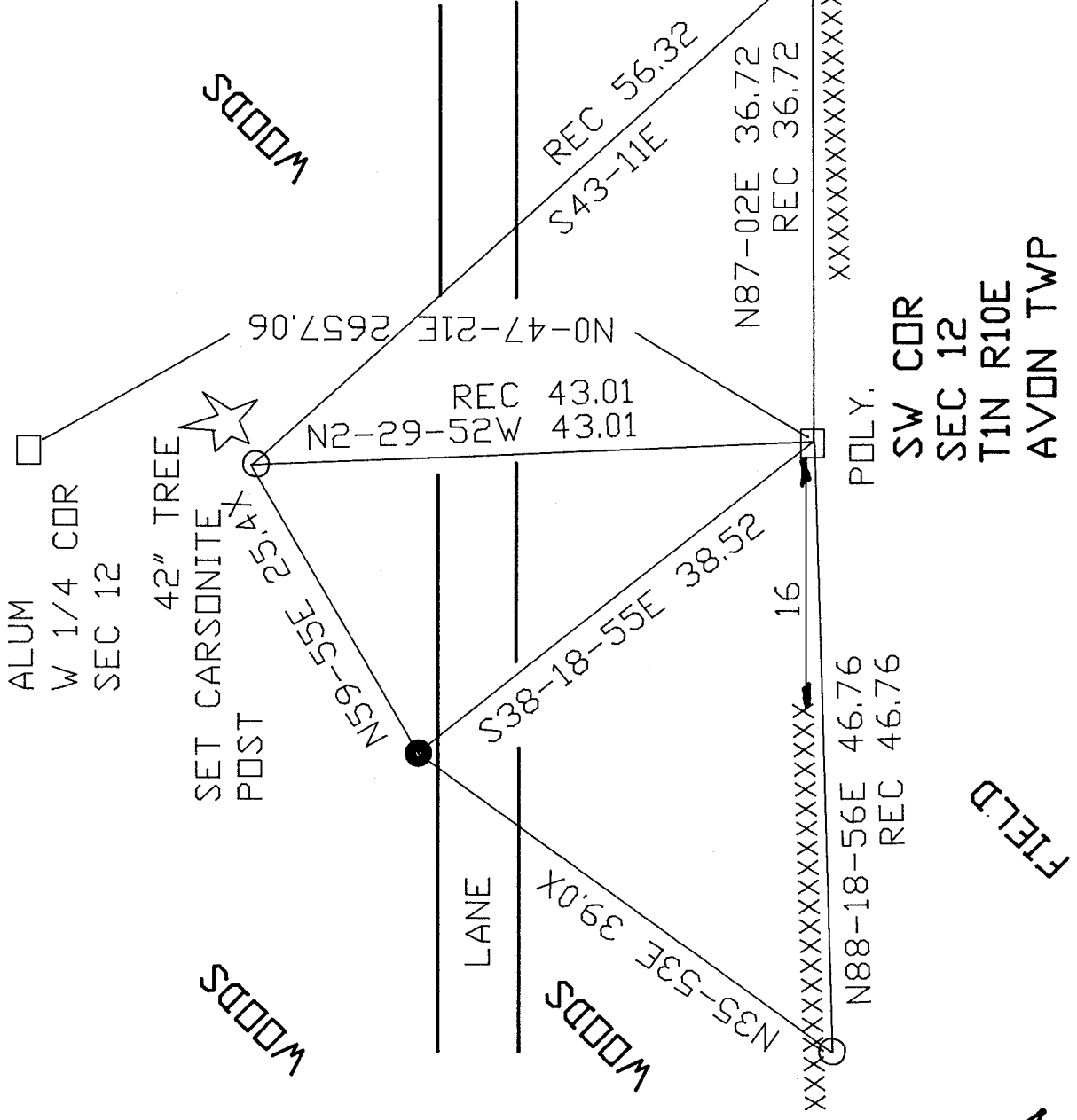
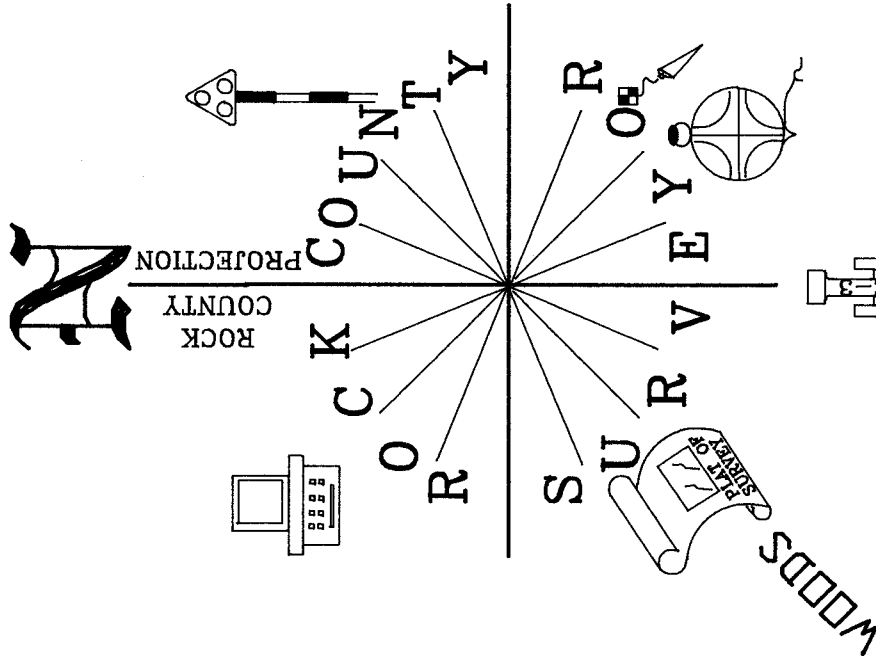
6-17-03

SHEET 2 OF 3

CORNER CODE

J
E-21

A.E. 7.08 REQUIREMENT



NOT TO SCALE
 OLD TIES VOL 5 PG 240
 OBSERVATION SHEET #551
 ● SET 3/4X24 REROD/
 ○ PLASTIC CAP
 ○ FD 1 1/2" PIPE

ALUM
 W 1/4 COR
 SEC 12

42" TREE
 SET CARSONITE
 POST

WOODS

WOODS

LANE

WOODS

SW COR
 SEC 12
 TIN R10E
 AVON TWP

FIELD

SHEET 3 OF 4

EMBOSSSED SEAL
Donald Barnes
 6-17-03

J - 21

