

# U.S. PUBLIC LAND SURVEY MONUMENT RECORD

For Public Land Survey Corners In:

WI ADMINISTRATIVE CODE A-E 7.08 REQUIREMENT

T. 1 N. R. 10 E. 4th P.M.

REV 10/23/2004

USMONREC.DWG

### CORNER CODE INDEX

Avon TWP

ROCK COUNTY WI

IF AVAILABLE  
ROCK COUNTY COORDINATES PREFERRED

A	1	2	3	4	5	6	7	8	9	10	11	12	13	14	15	16	17	18	19	20	21	22	23	24	25	A
B		6	4	5								4			3					2					1	B
C																										C
D																										D
E																										E
F																										F
G																										G
H																										H
J																										J
K																										K
L																										L
M																										M
N																										N
O																										O
P																										P
Q																										Q
R																										R
S																										S
T																										T
U																										U
V																										V
W																										W
X																										X
Y																										Y
Z																										Z

North \_\_\_\_\_ Elev. \_\_\_\_\_

East \_\_\_\_\_

Hor. Datum \_\_\_\_\_ Vert. Datum \_\_\_\_\_

LATITUDE \_\_\_\_\_ ELLIPS. HT. \_\_\_\_\_

LONGITUDE \_\_\_\_\_

NAD83(91) \_\_\_\_\_ NETWORK ADJ. YR \_\_\_\_\_

GPS (X) \_\_\_\_\_ TRAVERSE (X) \_\_\_\_\_

BASED ON THE FOLLOWING CONTROL:

PLACE MONUMENT SYMBOL  AT PROPER LOCATION ON ABOVE INDEX

CORNER MONUMENT

WITNESS MONUMENT

BEARINGS ARE BASED ON: \_\_\_\_\_

FIELD BOOK \_\_\_\_\_ PAGE # \_\_\_\_\_

SHEET 1 OF 4

SHOW A PLAN VIEW DRAWING DEPICTING THE CORNER MONUMENT AND SURROUNDING PHYSICAL FEATURES, INCLUDING THE EXCAVATION AREA AND DEPTH.

PLANNING & ZONING COMMITTEE ADOPTED THIS FORM ON 12/2/1982

CORNER CODE C-5

AV515

(B) Describe any record evidence, monument evidence, occupational evidence, testimonial evidence or any other material evidence you considered, and whether the monument was found or placed.

- 1834 HARRISON NORTH BET 5 & 6  
19.8 LEAVE CREEK?  
528 LEAVE BOTTOM  
810.48 RED O 12  
1463.88 W.O. 24  
2572.68 BUR OAK 12  
2640 QUARTER SEC COR. BURR OAK 20 NB2E 38.28'  
BURR OAK 12 S86W 50.82' BURR OAK 20 BURR  
OAK 12 } MARKED  
2904 BURR OAK 12  
4006.86 BURR OAK 10  
4664.22 INT. N BDY 96.36' EAST OF POST { BURR OAK 18  
S26W 36.3' WHITE OAK 18 S63E 69.3' LAND  
ROLLING 2<sup>ND</sup> RATE WITH BURR & WHITE OAK TIMBER  
JAN 31 1834
- 1847 TN ROAD RECORDS BK 1 PG 8 COMMENCING AT THE 1/4 POST  
31 CH 39 LKS [2071.74'] SOUTH OF THE NORTHWEST CORNER  
OF TOWN 1 RANGE 10; THENCE RUNNING EAST ON THE 1/4  
LINE TO THE 1/4 POST ON THE EAST LINE OF SEC 6 THENCE N  
68 1/2 E 73 CH [4818']; THENCE N61E 28 CH AND 60 LKS  
[1887.60] TO THE NORTH LINE OF THE TOWN SAME COURSE IN  
TOWN 2 RANGE 10, 4 CH AND 80 LKS [316.8'] THENCE N81 1/2  
E 37 CH AND 50 LKS [2475']; THENCE S75E 11 CH [726'] TO  
THE TOWN LINE; THENCE EAST ON THE TOWN LINE TO THE  
NORTH EAST COR OF SEC 4; THENCE EAST ON THE TOWN LINE  
TO THE NORTHEAST COR OF TOWN 1 RANGE 10. "" THE  
ABOVE DESCRIBED LINE BE THE CENTER LINE OF A PUBLIC  
HIGHWAY OF 4 RODS [66'] IN WIDTH AS FAR AS THE NORTH  
LINE OF THE TOWN AT A POINT 17 CHAINS [1122'] FROM THE  
NORTH WEST COR OF SEC 4 AND WE FURTHER ORDER THAT  
THE NORTH LINE OF SAID TOWN BE THE CENTRE LINE OF A  
HIGHWAY OF WHICH TWO ROADS IN WIDTH IS TO BE TAKEN  
FROM THE SAID TOWN OF AVON COMMENCING 11 CHAINS AND  
4 LKS [728.64'] WEST FROM THE NORTH EAST COR OF TOWN 1  
RANGE 10
- 1852 MC VEAN VOL 1 PG 13 5349.96 TO W 1/4 COR SEC 6  
1853 MC VEAN VOL 1 PG 18 CALLS FOR VAR 5-0 5289.9' TO E 1/4  
COR SEC 5. STATES NOTHING ABOUT E 1/4 COR MON.  
1870 RUGER VOL 2 PG 26 VAR 6-17 5376.52 TO W 1/4 COR SEC 6,  
2657.32 TO CENTER OF SEC 6  
1976 BARNES VOL 5 PG 160 FD PK/PAINTED X. REFERENCED  
SAME. TIES IN SPRING VALLEY FIELD BK 1 PG 34  
1978 BARNES VOL 5 PG 478 SET ALUM. MON.  
1981 LEE CSM VOL 10 PG 297 ALUM. MON. 2673.70 TO SW COR  
SEC 5  
1991 TALARCZYK CSM VOL 15 PG 343 2673.69 SW COR SEC 5,  
SOUTH 33.00 TO PIPE ON EAST LINE OF SE 1/4 LINE. ANGLE  
90-01-21 @ E 1/4 COR SEC 6 FROM SE COR SEC 6 TO 1/16<sup>TH</sup>  
COR WHICH IS 1333.33'  
1992 KARNs CSM VOL 15 PG 380 FD ROCK COUNTY MON.

Donald Barnes

6-06-05

SHEET 1 OF 4  
CORNER CODE C-5

AV515

FD ALUM. MON. & SW AND SE REFERENCE PIPES.

C) Was the corner restored through acceptance of (1) an obliterated evidence location, or, (2) a found perpetuated location?

ACCEPTED FD PERPETUATED LOCATION. IN HARMONY WITH TIES & 1/16<sup>TH</sup> CORNERS TO THE WEST AND SW COR SEC 5.

E) Was the corner reestablished through lost corner proportionate methods? If so, show the method, including the directions and distances to other public land survey corners used as evidence or used for proportioning the corner location.

I, **Donald Barnes**, hereby certify that the corner location as identified by the corner code index was determined by me under my direction and control and that this U.S. Public Land Survey Monument Record is correct and complete to the best of my knowledge and belief.

Seal  
*Donald Barnes*

Emboss

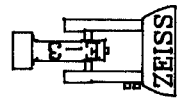
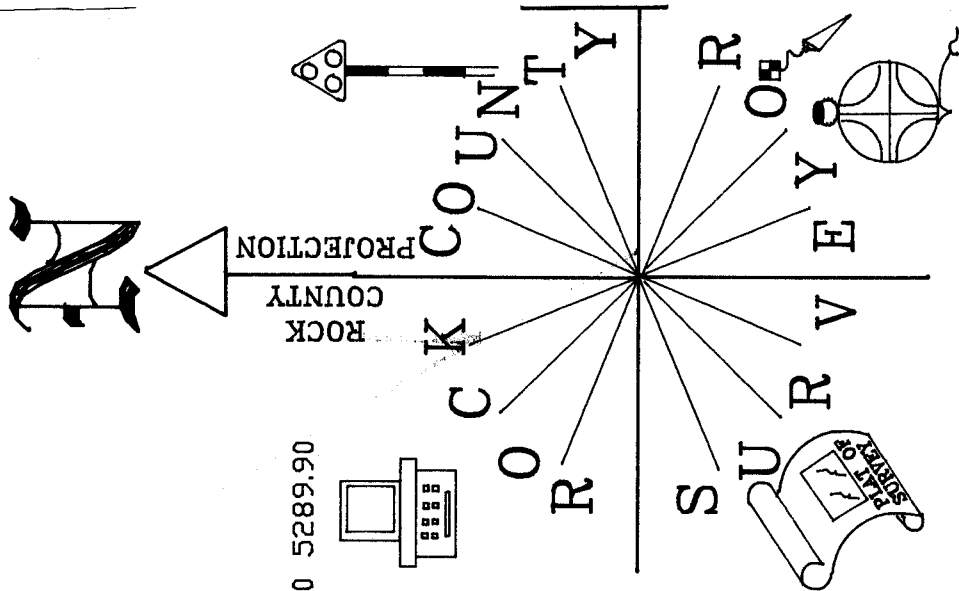
6-06-2005

SHEET 2 OF 4

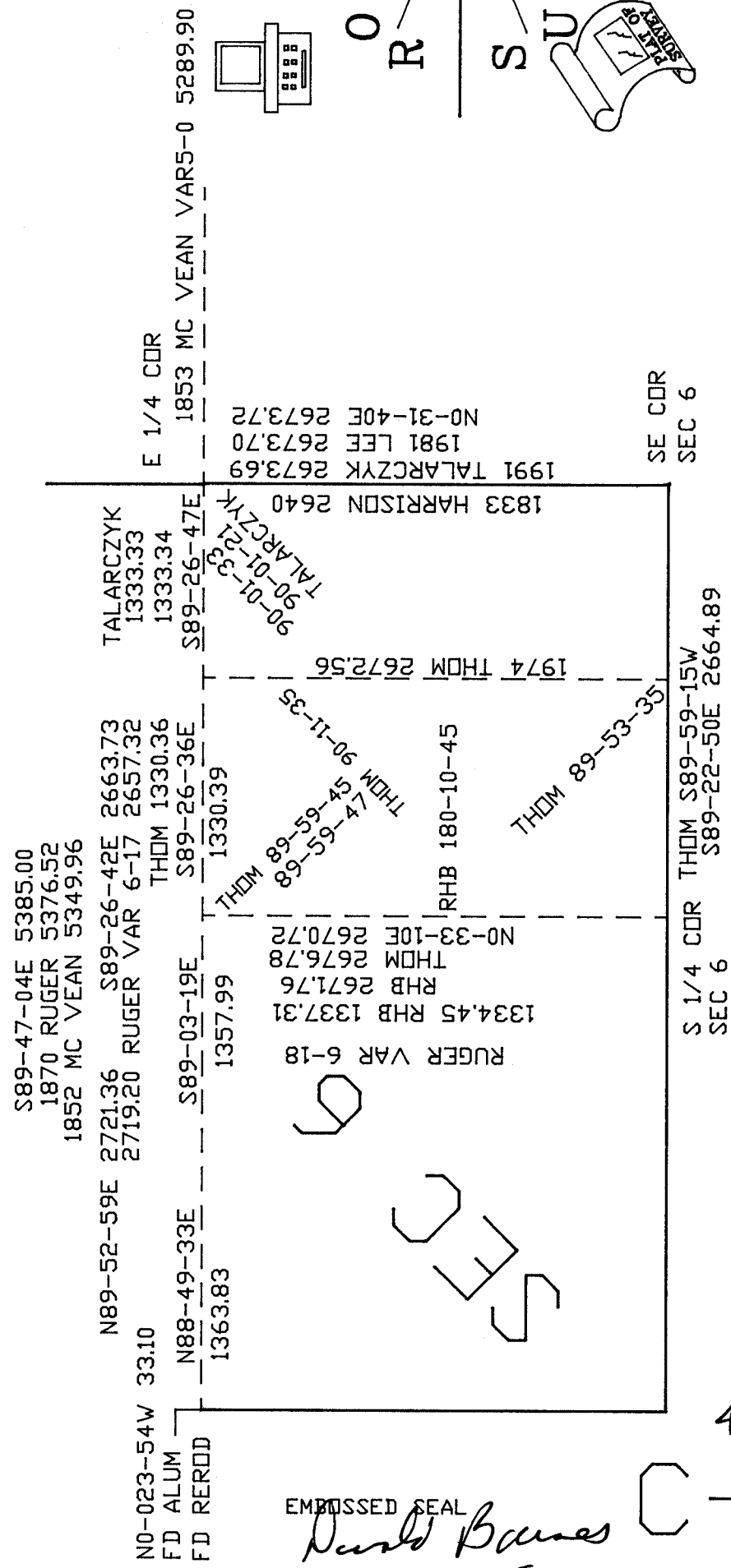
CORNER CODE **C-5**

A.E. 7.08 REQUIREMENT





NOT TO SCALE  
 NEW OBSERVATION SHEETS &  
 OLD TRAVERSE OBSERVATIONS



EMBOSSED SEAL

*David Barnes*  
 6-26-2005

4054  
 C-5