

Paper weight-110# (minimum)

Black nonfading ink required

U.S. PUBLIC LAND SURVEY MONUMENT RECORD

For Public Land Survey Corners In:
T. 4 N. R. 10 E. 4th P.M.
CORNER CODE INDEX

WI ADMINISTRATIVE CODE A-E 7.08 REQUIREMENT
REV 10/23/2004 USMONREC.DWG

UNION TWP
ROCK COUNTY WI

IF AVAILABLE
ROCK COUNTY COORDINATES PREFERRED

A	1	2	3	4	5	6	7	8	9	10	11	12	13	14	15	16	17	18	19	20	21	22	23	24	25	A	
B		6	4	5											3					2						1	B
C																											C
D																											D
E																											E
F																											F
G																											G
H																											H
J																											J
K																											K
L																											L
M																											M
N																											N
O																											O
P																											P
Q																											Q
R																											R
S																											S
T																											T
U																											U
V																											V
W																											W
X																											X
Y																											Y
Z																											Z

North _____ Elev. _____

East _____

Hor. Datum _____ Vert. Datum _____

LATITUDE _____ ELLIPS. HT. _____

LONGITUDE _____

NAD83(91) _____ NETWORK ADJ. YR 2010 _____

GPS (X) _____ TRAVERSE (X) X

BASED ON THE FOLLOWING CONTROL:

PLACE MONUMENT SYMBOL AT PROPER LOCATION ON ABOVE INDEX

CORNER MONUMENT WITNESS MONUMENT

(a) BEARINGS ARE BASED ON: ROCK COUNTY PROJECTION

FIELD BOOK _____ PAGE # _____
OR OBSERVATION SHEET _____

SHEET 1 OF 3

SHOW A PLAN VIEW DRAWING DEPICTING THE CORNER MONUMENT AND SURROUNDING PHYSICAL FEATURES, INCLUDING THE EXCAVATION AREA AND DEPTH.

PLANNING & ZONING COMMITTEE ADOPTED THIS FORM ON 12/2/1982

CORNER CODE C-5

UN515 W1/4CORSEC5

(B) Describe any record evidence, monument evidence, occupational evidence, testimonial evidence or any other material evidence you considered, and whether the monument was found or placed.

1833 HARRISON (NOV 10TH) T4N T10E 4TH MER NORTH BET
SECS 5 & 6

1582.02 BURR O 12

2640.00 QUARTER SEC. CO {BURR O 10 S74W 9.24';
BURR O 12 N53E 23.76' BURR O 10 & BURR O
12} MARKED

5205.42 INT. N. BDY 184.80 W OF P BURR O 12 S68W
39.60'; BURR O 14 S40E 59.40' LAND SAME AS
BEFORE

1856 CHURCH VOL 1 PG 61 STATES NOTHING ABOUT MON. VAR
7-30 2755.50? TO CENTER OF SEC 5 & VAR 7-30 5481.96
TO E 1/4 COR SEC 5.

1856 CHURCH VOL 1 PG 83 STATES NOTHING ABOUT MON.
2640.00 TO CENTER OF SEC 6 & 5392.20 TO W 1/4 COR SEC
6.

1870 RUGER AUG REMON-119 SOUTH ON WEST LINE OF NW
1/4 SEC 5 ON A VAR 6-45; OFFSET EAST
11.22' AT

2544.46 INTERSECTED QUARTER LINE 20.13' EAST OF
QUARTER CORNER. FOUND EAST BEARING TREE
AND REMAINS OF STUMP OF WEST BEARING TREE.
ESTABLISHED CORNER FROM THEM. COR VAR 6-
34'

SOUTH ON WEST LINE OF SW 1/4 SEC 5
ON A VAR 6-30; OFFSET WEST 8.58' AT

2665.74 INTERSECTED SOUTH BOUNDARY LINE 27.72'
WEST OF CORNER. FOUND OLD STAKE AT
CORNER. COR VAR 6-55

1976 BARNES VOL5 PG 137 DUG 2.0' DEEP FD CUT STONE 8
1/2X6X18. SET 24" BERNSTSEN W-1-B MON. & REF SAME.
CORNER ON EAST PVMT EDGE OF CROCKER RD & SOUTH
SIDE OF HOLT RD.

1978 BARNES VOL 5 PG 407 REPLACED BROKE ALUM. MON. WITH
10" ALUM MON.

1978 SCHNEEBERGER CSM VOL 8 PG 23 ALUM. MON. 2672.46
TO ALUM @ SW COR SEC 5

1996 COMBS GSM VOL 19 PG 470 & 473 ALUM MON 2672.55 TO
SE COR SEC 6

2001 COMBS GSM VOL 24 PG 377 ALUM MON 2672.55 TO FD
ALUM @ SE COR SEC 6

2002 LATHROP CSM VOL 25 PG 355 ALUM 2672.21 TO ALUM @ SE
COR SEC 6.

2008 COMBS BK32 PG 846 "DREAMVIEW LE - RISCH ESTATES"
ALUM. MON. 2672.53 TO ALUM @ SE COR SEC 6

2009 COMBS GSM VOL 33 PG 163 ALUM MON.

2011 DALSING CSM PRELIM FD ALUM. MON N01-49-29E 2551.59
TO CUT STONE @ NW COR SEC 5, N88-55-14E 2711.23 TO
CENTER OF SEC 5; N88-55-14E 5523.93 TO CUT STONE @ E
1/4 COR SEC 5.

FD ALUM. 0.2' DEEP; 1.6' NORTH OF SOUTH PVMT EDGE PROJECTED
FROM EAST; 5.7 EAST OF N/S POLE LINES PROJECTED FROM
SOUTH; ON LINE WITH N/S FENCE TO THE NORTH. I ALSO FOUND
THE SOUTHEASTERLY AND NORTH EAST REFERENCE PIPES.

SEAL

Emboss

SHEET 1 OF 3

Ronald
Barnes
May 27, 2011

CORNER CODE C-5

UN515 W1/4CORSEC5

C) Was the corner restored through acceptance of (1) an obliterated evidence location, or, (2) a found perpetuated location?

ACCEPTED FD ALUM. MON.

D) Describe any material discrepancy between the location of the corner as restored or reestablished and the location of that corner as previously restored or reestablished by distance and direction. Show the discrepancy on the plan view drawing under (a), above. Show the distances between the corner as previously restored or reestablished and (1) the corner as restored or reestablished, and (2) to at least 4 of the witness monuments shown on the drawing in (a), above.

NONE

(E) Was the corner reestablished through lost corner proportionate methods? If so, show the method, including the directions and distances to other public land survey corners used as evidence or used for proportioning the corner location.

NO

I, **Donald Barnes**, hereby certify that the corner location as identified by the corner code index was determined by me under my direction and control and that this U.S. Public Land Survey Monument Record is correct and complete to the best of my knowledge and belief.

Donald Barnes

SEAL

SHEET 2 OF 3

Emboss

May 27, 2011

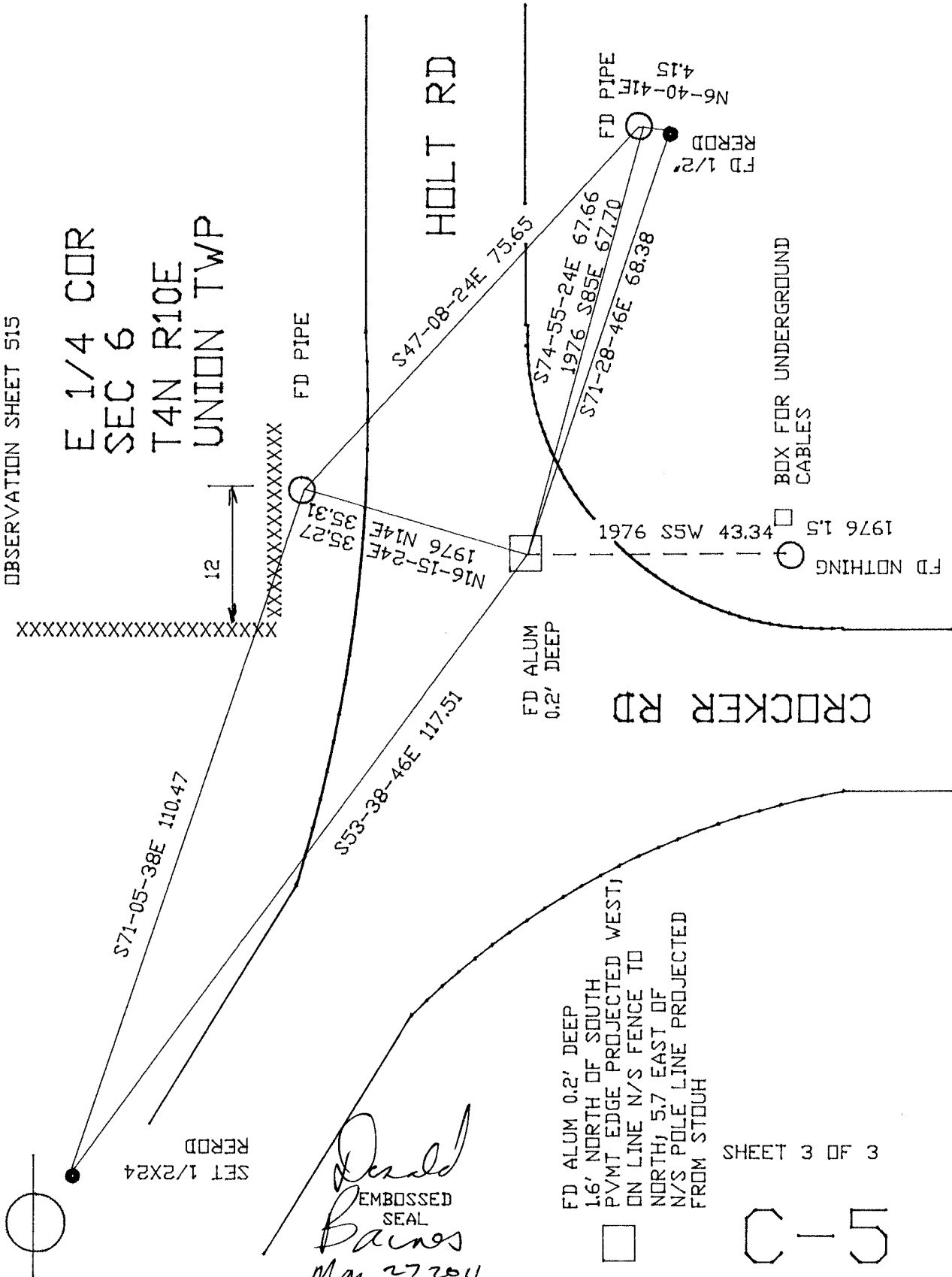
CORNER CODE

C-5

A.E. 7.08 REQUIREMENT

1976 BARNES VOL 5 PG 137
OBSERVATION SHEET 515

E 1/4 COR
SEC 6
T4N R10E
UNION TWP



Donald Barnes
EMBOSSSED SEAL
May 27, 2011

FD ALUM 0.2' DEEP
1.6' NORTH OF SOUTH
PVMT EDGE PROJECTED WEST
ON LINE N/S FENCE TO
NORTH; 5.7 EAST OF
N/S POLE LINE PROJECTED
FROM STOUH

SHEET 3 OF 3

C-5