

# U.S. PUBLIC LAND SURVEY MONUMENT RECORD

For Public Land Survey Corners in the

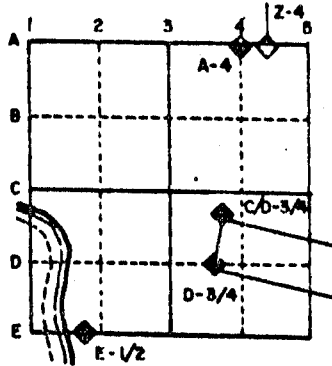
T. / N., R. / O E.

## CORNER CODE INDEX

	1	2	3	4	5	6	7	8	9	10	11	12	13	14	15	16	17	18	19	20	21	22	23	24	25
A																									
B																									
C																									
D																									
E																									
F																									
G																									
H																									
I																									
J																									
K																									
L																									
M																									
N																									
O																									
P																									
Q																									
R																									
S																									
T																									
U																									
V																									
W																									
X																									
Y																									
Z																									

PLACE MONUMENT SYMBOL (◆) AT PROPER LOCATION ON ABOVE INDEX

### EXAMPLE



AVON TWP  
ROCK COUNTY WI

IF AVAILABLE  
STATE PLANE COORDINATES

North (Y) \_\_\_\_\_ Eleve. (Z) \_\_\_\_\_  
 East (X) \_\_\_\_\_ Zone \_\_\_\_\_  
 Hor. Datum \_\_\_\_\_ Vert. Datum \_\_\_\_\_

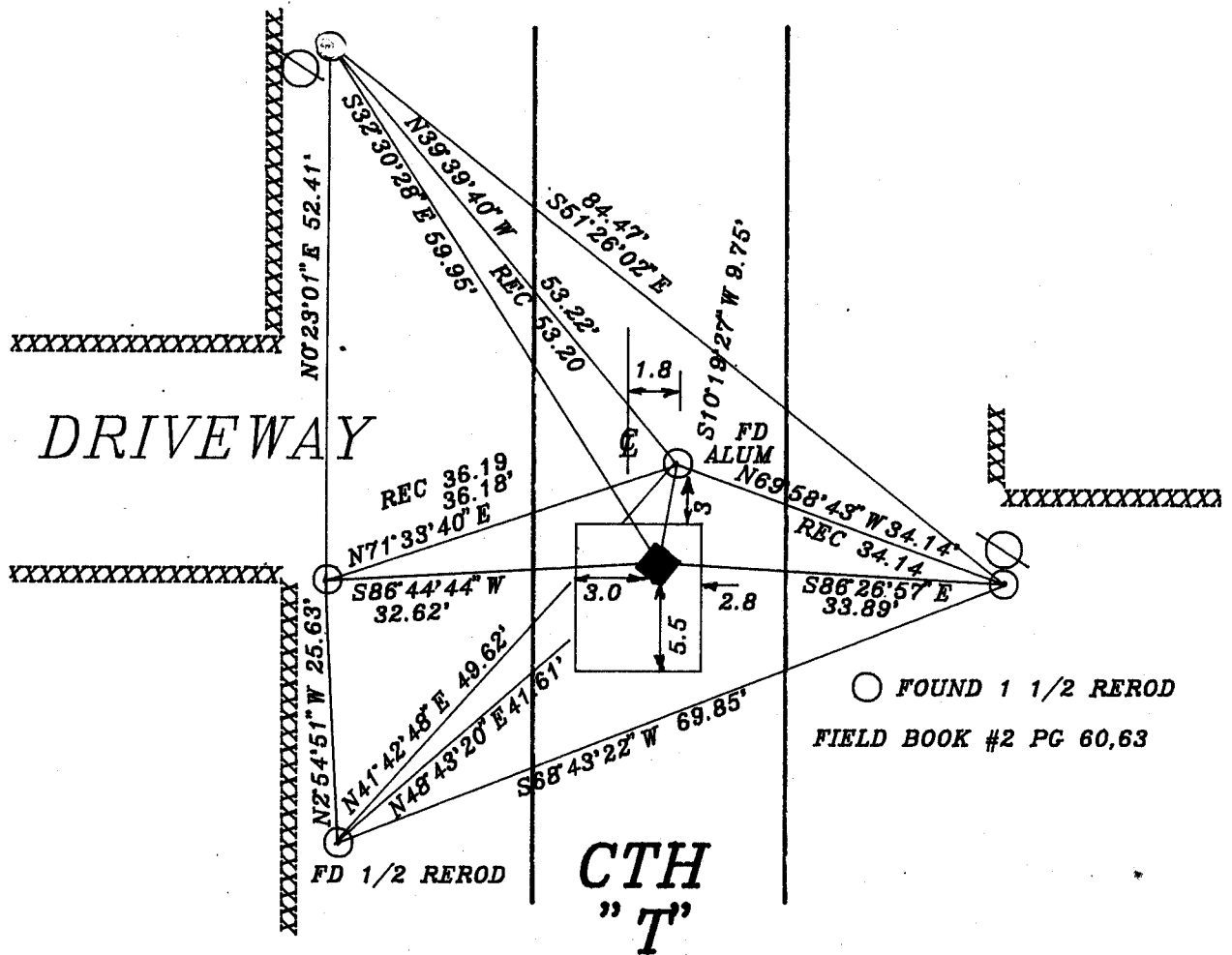
c.)

◆ CORNER MONUMENT

○ WITNESS MONUMENT

MICROFILMED

BEARINGS ARE BASED ON:



○ FOUND 1 1/2 REROD  
FIELD BOOK #2 PG 60,63

SHEET \_\_\_ OF \_\_\_

CORNER CODE: 61

(B) Describe any record evidence, monument evidence, occupational evidence, testimonial evidence or any other material evidence you considered, and whether the monument was found or placed.

- 1833 MULETT ORIGINAL GOVERNMENT SURVEYOR. SET A POST FOR 1/4 SECTION CORNER IN (RAISED) A MOUND. CALLS FOR 2640 TO NE CORNER OF SECTION 12 AND 2640 TO SE CORNER OF SECTION 12.
- 1851 HIGHWAY RECORDS BOOK 1 PG 17. COMMENCING AT THE QUARTER STAKE SEC 7 T1 RANGE E RUNNING NORTH TO THE TOWN LINE OF THE ABOVE MENTIONED TOWNS AND THE SAID LINES ABOVE DESCRIBED BE THE CENTRE OF THE SAID HIGHWAY AND ....."
- 1856 HIGHWAY RECORDS BOOK 1 PG 28."... THENCE RUNNING NORTH ON SAID COUNTY LINE TO INTERSECT THE COUNTY LINE ROAD ON WEST LINE OF SECTION 7 AND THAT THE SAID LINE ABOVE DESCRIBED BE THE CENTER LINE OF SAID HIGHWAY....."
- 1852 McVEAN VOL 1 PG 9 USED TO SUBDIVIDE SECTION 7. CALLS FOR 2665.74 TO THE CENTER OF SECTION 7, 2634.72 TO NW CORNER OF SECTION 7, AND 2641.98 TO THE SW CORNER OF SECTION 7.
- 1978 TALARCZYK TIES. SET ALUMINUM MONUMENT BY PROPORTIONATE MEASUREMENT AND EXISTING PHYSICAL EVIDENCE.

DUG AND FOUND NOTHING. FOUND ALUMINUM MONUMENT THAT TALARCZYK PLACED.

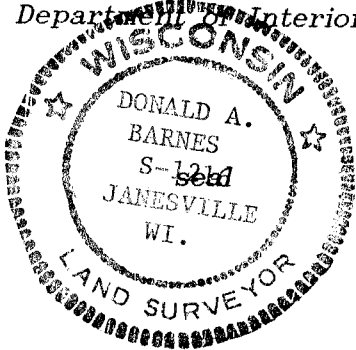
C) Was the corner restored through acceptance of (1) an obliterated evidence location, or, (2) a found perpetuated location?

ACCEPTED OBLITERATED EVIDENCE LOCATION. I USED THE CENTER OF THE PAVEMENT AS CALLED FOR IN THE OLD ROAD RECORDS AND THE PRORATION OF McVEAN'S DISTANCE FROM THE SW CORNER OF SECTION 7 WHICH IS IN HARMONY WITH THE E/W FENCE ON THE EAST AND WEST SIDE OF THE ROAD. THE PRORATION DISTANCE COMPUTED BY USING McVEAN'S RECORD DISTANCE FROM THE NE TO SE CORNERS OF SECTION 7 IS 2648.64 AND THE PRORATION DISTANCE USING HIS RECORD DISTANCE FROM THE SE TO SW CORNERS OF SECTION 7 IS 2648.44. I USED THE MEAN OF 2648.54.

D) Describe any material discrepancy between the location of the corner as restored or reestablished and the location of that corner as previously restored or reestablished by distance and direction. Show the discrepancy on the plan view drawing under (a), above. Show the distances between the corner as previously restored or reestablished and (1) the corner as restored or reestablished, and (2) to at least 4 of the witness monuments shown on the drawing in (a), above.

THE ORIGINAL GOVERNMENT PLAT AND FIELD NOTES CALL FOR A COMMON CORNER WITH THE E 1/4 CORNER OF SECTION 12. I DID NOT ACCEPT TALARCZYK'S ALUMINUM MONUMENT BECAUSE THERE IS NO JOG AT THE SW CORNER OF SECTION 7 AS HE CALLS FOR. HIS PLACEMENT OF THE EAST 1/4 CORNER OF SECTION 12 CALLS FOR PROPORTIONATE MEASUREMENT.

I, Donald Barnes, hereby certify that the corner points as identified by the corner code index were, in a field survey on, MAY 11, 1992, established, re-established, monumented, re-monumented, recovered or restored as expressed below and in conformance with the regulations and rules as required in the current manual of survey instructions of the United States Department of Interior, Bureau of Land Management.



COUNTY SURVEYOR FILING DATA

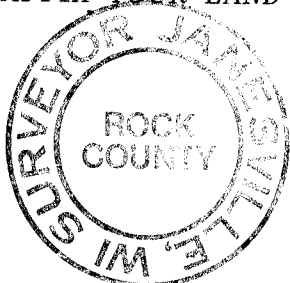
Date of computer entry \_\_\_\_\_

Date microfilmed \_\_\_\_\_

Number of included sheets \_\_\_\_\_

CORNER CODE

AFFIX YOUR LAND SURVEYOR SEAL



61