

PUBLIC LAND SURVEY MONUMENT RECORD

For Public Land Survey Corners in the

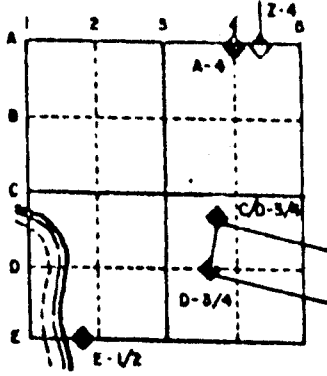
T. 1 N., R. 10 E.

CORNER CODE INDEX

	1	2	3	4	5	6	7	8	9	10	11	12	13	14	15	16	17	18	19	20	21	22	23	24	25
A																									
B																									
C																									
D																									
E																									
F																									
G																									
H																									
I																									
J																									
K																									
L																									
M																									
N																									
O																									
P																									
Q																									
R																									
S																									
T																									
U																									
V																									
W																									
X																									
Y																									
Z																									

PLACE MONUMENT SYMBOL (◆) AT PROPER LOCATION ON ABOVE INDEX

EXAMPLE



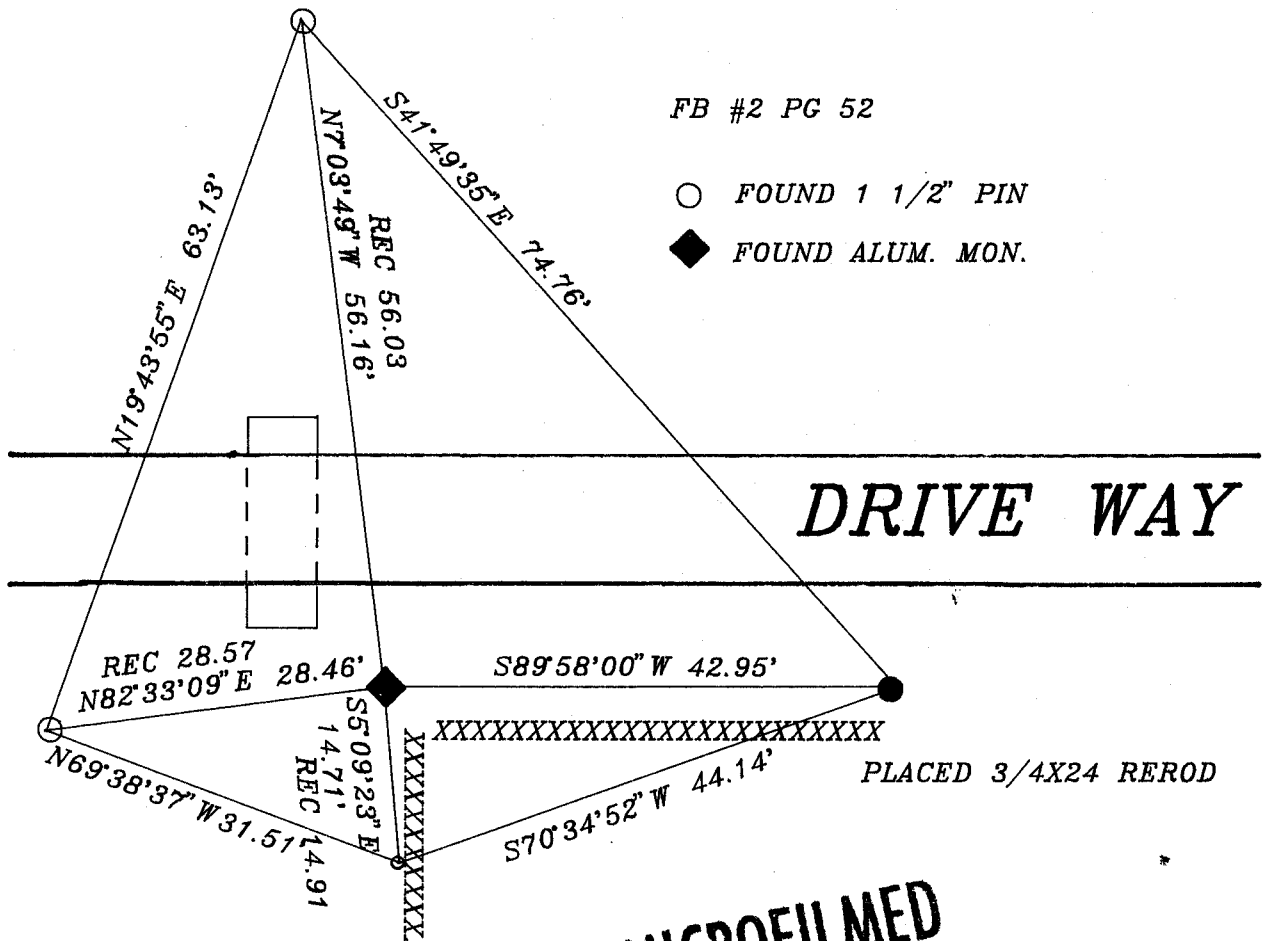
AVON TWP
ROCK COUNTY WI

IF AVAILABLE
STATE PLANE COORDINATES

North (Y) _____ Eleve. (Z) _____
 East (X) _____ Zone _____
 Hor. Datum _____ Vert. Datum _____

◆ CORNER MONUMENT ○ WITNESS MONUMENT

BEARINGS ARE BASED ON: ASSUMED



MICROFILMED

SHEET ___ OF ___

CORNER CODE: X /

(B) Describe any record evidence, monument evidence, occupational evidence, testimonial evidence or any other material evidence you considered, and whether the monument was found or placed.

1833 HARRISON ORIGINAL SURVEYOR. SET A POST COR TO 1/4 SECTION ON A SMALL ISLAND OF WILLOWS. FR. WH. A WILLOW 8 INCHES BEARS N60W 118.8' DIST.

1932 SUNNY VOL 3 PG 216 CALLS FOR 2649.5 TO THE SW CORNER OF SECTION 31 AND 2649.5 TO THE FENCE INTERSECTION AT THE NW CORNER OF SECTION 31. STATES NOTHING ABOUT FINDING OR ESTABLISHING THE CORNER BUT USED THIS LOCATION TO ESTABLISH THE CENTER OF SECTION 31.

1978 TALARCZYK SECTION CORNER TIE. CORNER SET BY PROPORTIONATE MEASUREMENT & EXISTING PHYSICAL EVIDENCE. PLACED ALUMINUM MONUMENT.

FOUND ALUMINUM MONUMENT. IT IS IN HARMONY WITH SUNNY'S PIPE AT THE CENTER OF SECTION 31.

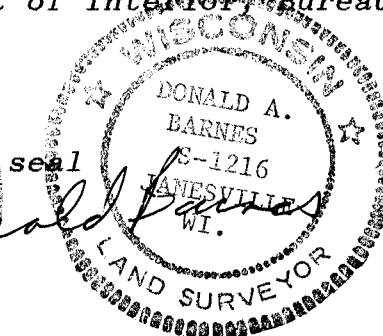
C) Was the corner restored through acceptance of (1) an obliterated evidence location, or, (2) a found perpetuated location?

ACCEPTED FOUND MONUMENT.

D) Describe any material discrepancy between the location of the corner as restored or reestablished and the location of that corner as previously restored or reestablished by distance and direction. Show the discrepancy on the plan view drawing under (a), above. Show the distances between the corner as previously restored or reestablished and (1) the corner as restored or reestablished, and (2) to at least 4 of the witness monuments shown on the drawing in (a), above.

(E) Was the corner reestablished through lost corner proportionate methods? If so, show the method, including the directions and distances to other public land survey corners used as evidence or used for proportioning the corner location.

I, Donald Barnes, hereby certify that the corner points as identified by the corner code index were, in a field survey on, December 16, 1991, established, re-established, monumented, re-monumented, recovered or restored as expressed below and in conformance with the regulations and rules as required in the current manual of survey instructions of the United States Department of Interior, Bureau of Land Management.



COUNTY SURVEYOR FILING DATA

Date of computer entry _____

Date microfilmed _____

Number of included sheets _____
CORNER CODE

AFFIX YOUR LAND SURVEYOR SEAL

X/