

Paper weight-110# (minimum)

Black nonfading ink required

U.S. PUBLIC LAND SURVEY MONUMENT RECORD

For Public Land Survey Corners In:
T. 4 N. R. 10 E. 4th P.M.
CORNER CODE INDEX

WI ADMINISTRATIVE CODE A-E 7.08 REQUIREMENT
REV 10/23/2004 USMONREC.DWG

UNION TWP

ROCK COUNTY WI

IF AVAILABLE
ROCK COUNTY COORDINATES PREFERRED

A	1	2	3	4	5	6	7	8	9	10	11	12	13	14	15	16	17	18	19	20	21	22	23	24	25	A
B			6				5					4				3				2				1		B
C																										C
D																										D
E																										E
F																										F
G																										G
H																										H
J																										J
K																										K
L																										L
M																										M
N																										N
O																										O
P																										P
Q																										Q
R																										R
S																										S
T																										T
U																										U
V																										V
W																										W
X																										X
Y																										Y
Z																										Z

PLACE MONUMENT SYMBOL AT PROPER LOCATION ON ABOVE INDEX

North _____ Elev. _____

East _____

Hor. Datum _____ Vert. Datum _____

LATITUDE _____ ELLIPS. HT. _____

LONGITUDE _____

NAD83(91) _____ NETWORK ADJ. YR 2010 _____

GPS (X) _____ TRAVERSE (X)

BASED ON THE FOLLOWING CONTROL:

CORNER MONUMENT

WITNESS MONUMENT

(a)

ROCK COUNTY PROJECTION
BEARINGS ARE BASED ON: _____

FIELD BOOK _____ PAGE # _____
OR OBSERVATION SHEET _____

SHEET 1 OF 3

SHOW A PLAN VIEW DRAWING DEPICTING THE CORNER MONUMENT AND SURROUNDING PHYSICAL FEATURES, INCLUDING THE EXCAVATION AREA AND DEPTH.

PLANNING & ZONING COMMITTEE ADOPTED THIS FORM ON 12/2/1982

CORNER CODE X-5

UN615 W1/4CORSEC32

(B) Describe any record evidence, monument evidence, occupational evidence, testimonial evidence or any other material evidence you considered, and whether the monument was found or placed.

1833 HARRISON T4N T10E 4TH MER

NORTH BET SECS 31 & 32

1980.00 LEAVE TIMBER & ENTER PRAIRE

2640.00 QUARTER SEC COR. {SET POST & RAISED A MOUND OF EARTH & SODS

5280.00 COR TO SECS 29,30,31,32 SET A POST & RAISED A MOUND OF EARTH & SODS LAND 1ST 1/2 ROLLING 2ND RATE TIMBER W.O. & BURR O. GROWTH GRUBS, GRASS, & WEEDS LAST 1/2 ROLLING 1ST RATE PRAIRIE WITH GROWTH OF GRASS & WEEDS

1867 LOCKE VOL 1 PG 302 & #5241FD OLD STAKE - SET W.O. STAKE SURROUNDED BY 2 LIMESTONES & 1 HARD HEAD. VAR7-30 TO E 1/4 COR SEC 32. USED TO SUBDIVIDE SEC 32.

1870 RUGER AUG REMON-79 SOUTH ON WEST LINE OF NW 1/4 SEC 32 ON A VAZR 7-15 AT

2644.62 INTERSECTED QUARTER LINE 2.64' EAST OF QUARTER CORNER. FOUND STAKE SURROUNDED BY 4 LIMESTONES. COR VAR 7-11

SOUTH ON WEST LINE OF SW 1/4 SEC 32 ON A VAR 6-16' OFFSET WEST 5.44'

OFFSET WEST 5.94' OFFSET EAST 9.57' AT

2644.62 INTERSECTED SOUTH BOUNDARY LINE 11.88' WEST OF CORNER. FOUND STUMPS OF BOTH BEARING TREES AND ESTABLISHED CORNER FROM THEM. COR VAR 6-29

1890 BLEEDORN VOL 2 PG 440 MON. USED TO SUBDIVIDE SEC 31. VAR 5-15 2640.99 TO CENTER OF SEC 31 & 2649.90 TO MON @ NE COR SEC 31

1900 BROWN VOL 2 PG 518 MON. USED TO SUBDIVIDE SEC 32. 2629.44 TO GEN OF SEC 32, & 5326.53 TO MON @ E 1/4 COR SEC 32

1940 SUNNY #5235 FD STONE MON. WEST 909.6 TO POB A PIPE.

1977 BARNES VOL 5 PG 307 FD CUT STONE 1' DEEP

1977 BARNES VOL 5 PG 311 FD CUT LIMESTONE 1' DEEP. REFERENCED SAME.

1978 BARNES VOL 5 PG 407 SET 4" ALUM ON CUT STONE.

1981 COMBS #12964 FD ALUM. MON. WEST FROM ALUM MON @ E 1/4 SEC 31. E 1/4 COR SEC 31 TO SE COR SEC 31 IS SO -08-50W 2647.26'

1986 SCHROEDER GSM VOL 12 PG 390 FD ALUM @ E 1/4 COR SEC 31 & W 1/4 COR SEC 31. STATES NOTHING FOR MON @ CALL OF CENTER OF SEC 31. CENTER OF SEC 31 TOWARDS E 1/4 COR SEC 31 66.00 THENCE 2571.40 TO E 1/4 COR SEC 31

1986 COMBS GSM VOL 12 PG 395 ALUM. MON USED FOR LINE 3028.50 FROM W 1/4 COR SEC 31 TOWARDS ALUM @ E 1/4 COR SEC 31

1989 SCHROEDER GSM VOL 13 PG 453 STATES NOTHING ABOUT MON. W 1/4 COR TOWARDS E 1/4 COR SEC 32 2652.50

1994 COMBS GSM VOL 18 PG 22 ALUM. 2637.40 TO CENTER OF SEC 31.

2002 COMBS GSM VOL 25 PG 46 FD ALUM. 5267.80 TO FD IRON PIN @ E 1/4 COR EC 32

2004 COMBS GSM VOL 28 PG 7 ALUM. 2637.40 TO R/R SPIKE @ CENTER OF SEC 31 & 5665.90 TO ALUM @ W 1/4 COR SEC 31

2009 KARNS #16230 ROCK COUNTY SEC COR. S89-45-07W TO W 1/4 COR SEC 31 & S00-06-16E TO SE COR SEC 31.

BEAL
Ronald Barnes
Emboss

SHEET 1 OF 3

Sep 21, 2011

CORNER CODE X-5

UN615 W1/4CORSEC32

FD ALUM & REFERENCE MONUMENTS.

C) Was the corner restored through acceptance of (1) an obliterated evidence location, or, (2) a found perpetuated location?

ACCEPTED FD ALUM., WHICH PERPETUATES THE CUT LIMESTONE.

D) Describe any material discrepancy between the location of the corner as restored or reestablished and the location of that corner as previously restored or reestablished by distance and direction. Show the discrepancy on the plan view drawing under (a), above. Show the distances between the corner as previously restored or reestablished and (1) the corner as restored or reestablished, and (2) to at least 4 of the witness monuments shown on the drawing in (a), above.

NONE

(E) Was the corner reestablished through lost corner proportionate methods? If so, show the method, including the directions and distances to other public land survey corners used as evidence or used for proportioning the corner location.

NO

I, **Donald Barnes**, hereby certify that the corner location as identified by the corner code index was determined by me under my direction and control and that this U.S. Public Land Survey Monument Record is correct and complete to the best of my knowledge and belief.

Donald
SEAL

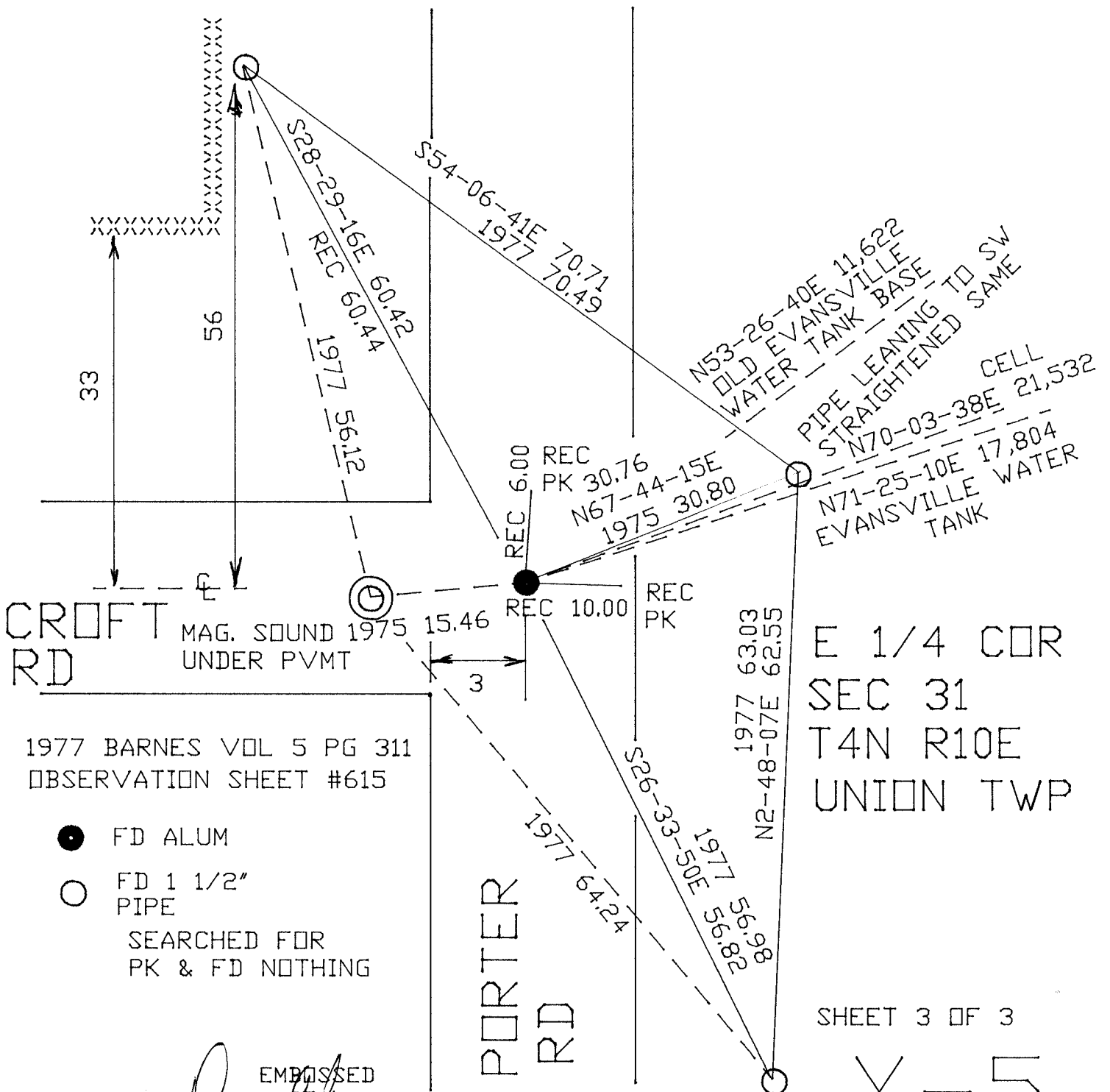
Barnes
Emboss

Sep 21, 2011

SHEET 2 OF 3

CORNER CODE **X-5**

A.E. 7.08 REQUIREMENT



1977 BARNES VOL 5 PG 311
OBSERVATION SHEET #615

- FD ALUM
- FD 1 1/2" PIPE
- SEARCHED FOR
PK & FD NOTHING

Donald Barnes
EMBOSSSED SEAL

Sept 2011

E 1/4 COR
SEC 31
T4N R10E
UNION TWP

SHEET 3 OF 3

X-5