

U.S. PUBLIC LAND SURVEY MONUMENT RECORD

For Public Land Survey Corners in the

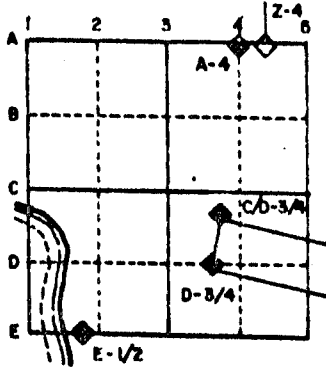
T. 1 N., R. 10 E.

CORNER CODE INDEX

	1	2	3	4	5	6	7	8	9	10	11	12	13	14	15	16	17	18	19	20	21	22	23	24	25
A																									
B																									
C																									
D																									
E																									
F																									
G																									
H																									
I																									
J																									
K																									
L																									
M																									
N																									
O																									
P																									
Q																									
R																									
S																									
T																									
U																									
V																									
W																									
X																									
Y																									
Z																									

PLACE MONUMENT SYMBOL (◆) AT PROPER LOCATION ON ABOVE INDEX

EXAMPLE



Avon TWP
ROCK COUNTY WI

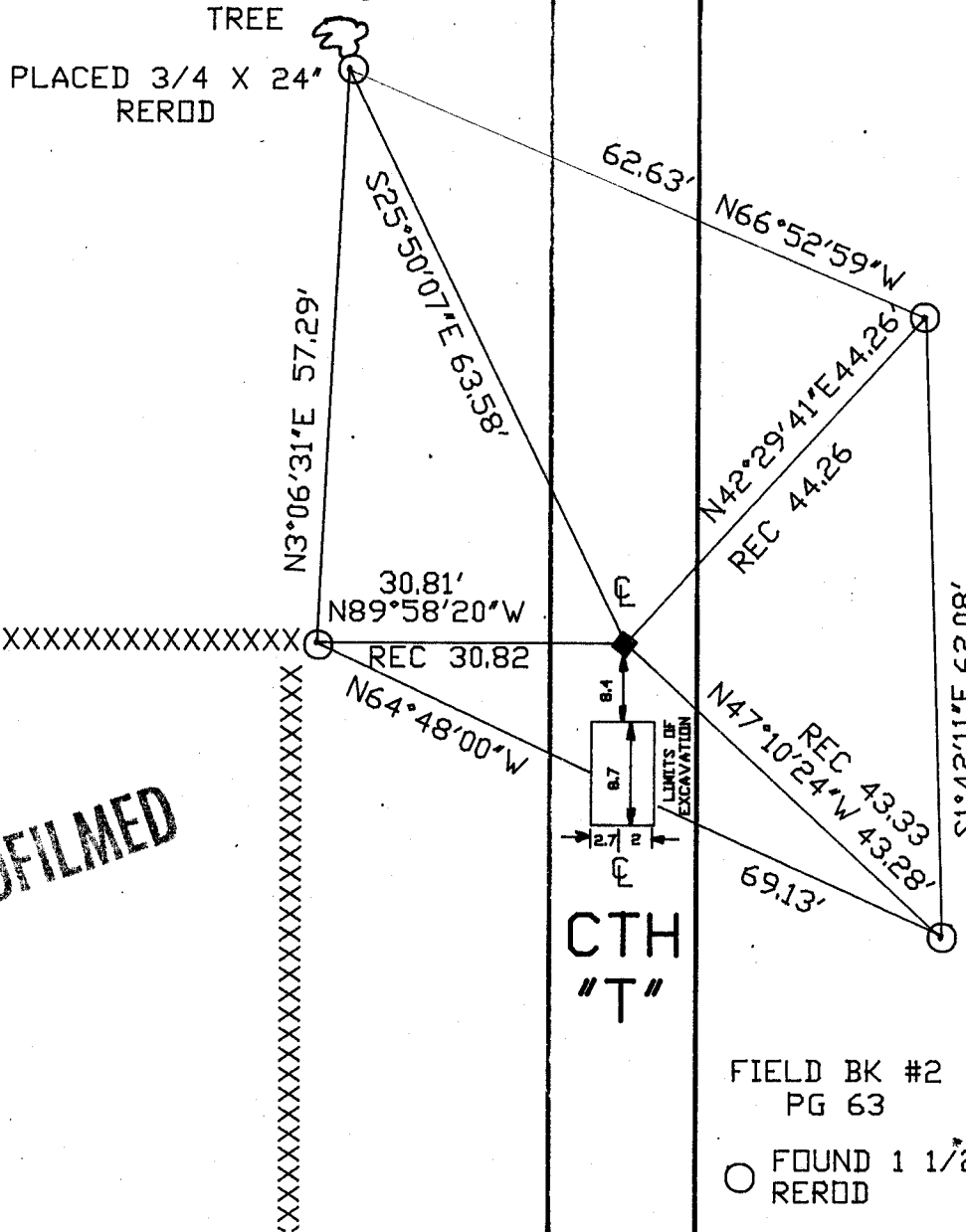
IF AVAILABLE STATE PLANE COORDINATES

North (Y) _____ Eleve. (Z) _____
 East (X) _____ Zone _____
 Hor. Datum _____ Vert. Datum _____

c.)

◆ CORNER MONUMENT

○ WITNESS MONUMENT



BEARINGS ARE BASED ON: ASSUMED

MICROFILMED

SHEET _____ OF _____

CORNER CODE: E/

(B) Describe any record evidence, monument evidence, occupational evidence, testimonial evidence or any other material evidence you considered, and whether the monument was found or placed.

1833 MULLETT ORIGINAL GOVERNMENT SURVEYOR SET POS FOR CORNER TO SECTION 1 & 12. RAISED A MOUND OF EARTH COVERED WITH SODS 3 FEET SQUARE AND 3 FEET HIGH. CALLS FOR 260 TO SE CORNER OF SECTION 12 AND 2640 TO E 1/4 CORNER OF SECTION 1.

1837 ORIGINAL SURVEYOR. 1878 STATE OF WISCONSIN SIGNED AND SEALED COPY OF FIELD NOTES. 5364.48' INTERSECTED EAST BOUNDARY 17.16' NORTH OF POST.

1834 HARRISON ORIGINAL GOVERNMENT SURVEYOR INTERSECTED WEST BOUNDARY 9.9' SOUTH OF POST. CALLS FOR 2647.26 TO S 1/4 CORNER OF SECTION 6.

1852 McVEAN VOL 1 PG 9 USED TO SURVEY SECTION 7. CALLS FOR 2685.54 TO S 1/4 CORNER OF SECTION 6 AND 2634.72 TO W 1/4 CORNER OF SECTION 7.

1856 HIGHWAY RECORDS BOOK 1 PG 17. "COMMENCING AT THE QUARTER STAKE SEC 7 T1 RANGE E RUNNING NORTH TO THE TOWN LINE OF THE ABOVE MENTIONED TOWNS AND THE SAID LINES ABOVE DESCRIBED BE THE CENTRE OF THE SAID HIGHWAY..."

1977 TALARCZYK TIE SHEET. CORNER SET BY PROPORTIONATE MEASUREMENT & EXISTING PHYSICAL EVIDENCE. SET CAST ALUMINUM MONUMENT.

1978 BARNES VOL 5 PG 476. STATED THAT THE GREEN COUNTY SURVEYOR DUG, FOUND NOTHING AND SET AN ALUMINUM MONUMENT. CALLS FOR 2680.56 TO THE W 1/4 CORNER OF SECTION 6 & 1329 TO A E/W FENCE THAT IS ON THE EAST SIDE OF THE ROAD WHICH IS SOUTH OF THE CORNER.

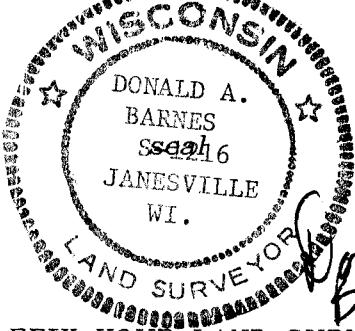
FOUND ALUMINUM MONUMENT. DUG AND FOUND NOTHING AT THE LOCATION SHOWN ON THE SKETCH.

C) Was the corner restored through acceptance of (1) an obliterated evidence location, or, (2) a found perpetuated location?

THE ORIGINAL GOVERNMENT PLAT AND FIELD NOTES CALLS FOR THE NW CORNER OF SECTION 7 AND THE NE CORNER OF SECTION 12 T1N R9E TO BE COMMON CORNERS. THE FIELD NOTES DO NOT CALL FOR THE PLACEMENT OF A CLOSING POST AND THE PLAT DOES NOT SHOW A JOG DISTANCE. ACCEPTED FOUND ALUMINUM MONUMENT. THIS LOCATION IS IN HARMONY WITH McVEAN'S DISTANCES ALONG THE NORTH LINE OF SECTION 7.

D) Describe any material discrepancy between the location of the corner as restored or reestablished and the location of that corner as previously restored or reestablished by distance and direction. Show the discrepancy on the plan view drawing under (a), above. Show the distances between the corner as previously restored or reestablished and (1) the corner as restored or reestablished, and (2) to at least 4 of the witness monuments shown on the drawing in (a), above.

I, Donald Barnes, hereby certify that the corner points as identified by the corner code index were, in a field survey on, MAY 11, 1992, established, re-established, monumented, re-monumented, recovered or restored as expressed below and in conformance with the regulations and rules as required in the current manual of survey instructions of the United States Department of Interior, Bureau of Land Management.



COUNTY SURVEYOR FILING DATA

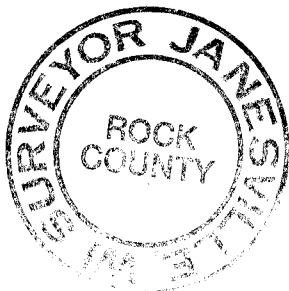
Date of computer entry _____

Date microfilmed _____

Number of included sheets _____

CORNER CODE

AFFIX YOUR LAND SURVEYOR SEAL



E/