

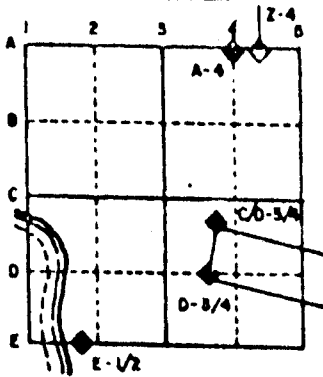
U.S. PUBLIC LAND SURVEY MONUMENT RECORD

For Public Land Survey Corners in the
 T. 1 N., R. 10 E.
CORNER CODE INDEX

	1	2	3	4	5	6	7	8	9	10	11	12	13	14	15	16	17	18	19	20	21	22	23	24	25
A																									
B																									
C	6																								
D		5																							
E			4																						
F				3																					
G					2																				
H																									
I	7																								
J		8																							
K			9																						
L				10																					
M					11																				
N						12																			
O	16																								
P		17																							
Q			18																						
R				19																					
S					20																				
T						21																			
U							22																		
V								23																	
W									24																
X	29																								
Y		30																							
Z			31																						

PLACE MONUMENT SYMBOL (◆) AT PROPER LOCATION ON ABOVE INDEX

EXAMPLE



AVON TWP
 ROCK COUNTY WI

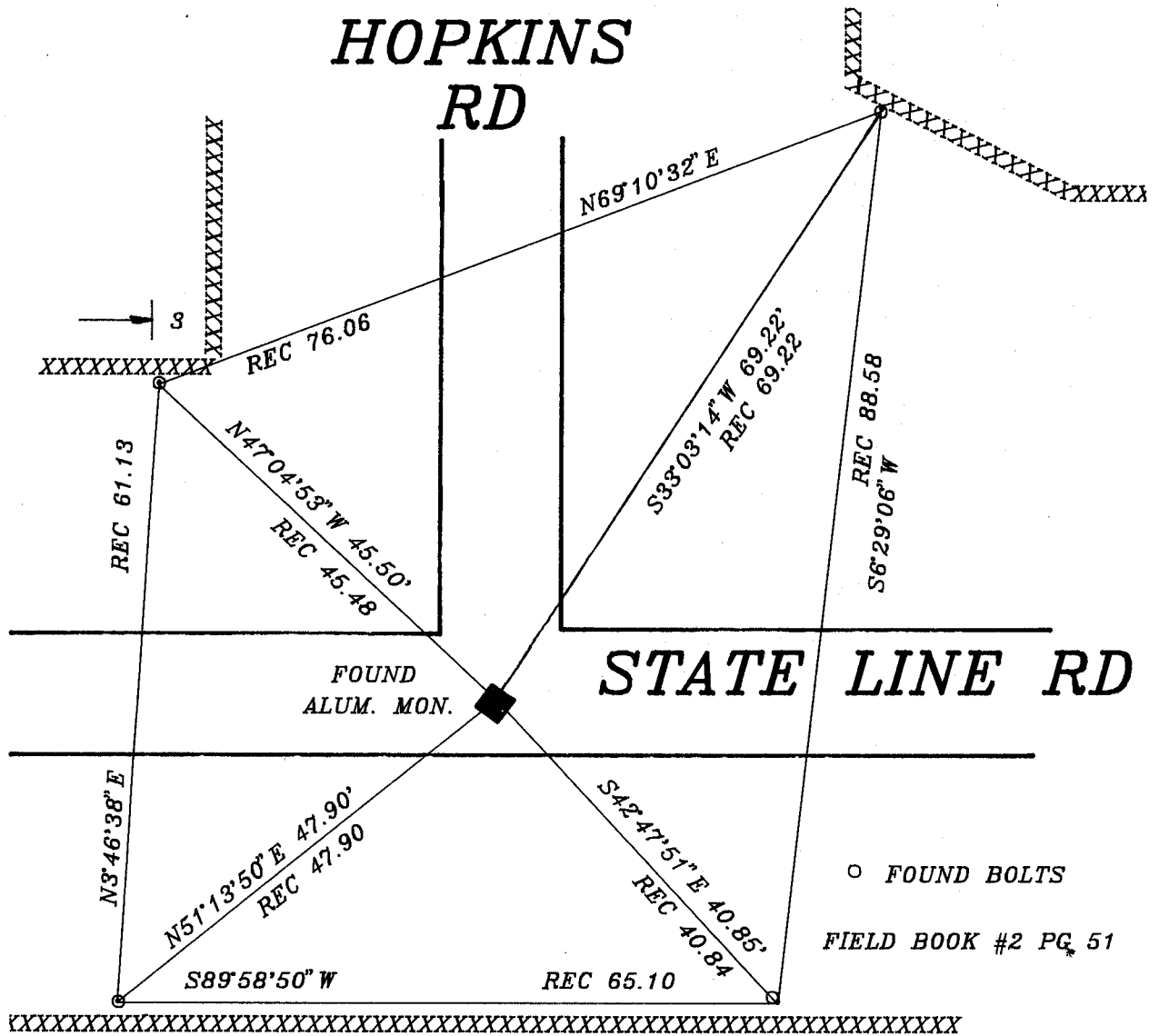
IF AVAILABLE
 STATE PLANE COORDINATES

North (Y) _____ Elev. (Z) _____
 East (X) _____ Zone _____
 Hor. Datum _____ Vert. Datum _____

◆ CORNER MONUMENT ○ WITNESS MONUMENT

HOPKINS RD

BEARINGS ARE BASED ON: ASSUMED



MICROFILMED

SHEET ___ OF ___

CORNER CODE: 25

(B) Describe any record evidence, monument evidence, occupational evidence, testimonial evidence or any other material evidence you considered, and whether the monument was found or placed.

1833 LYONS SET POST FOR CORNER TO SECTIONS 31&32. RED ELM 7 N63E 10.56', BLACK OAK 16 N77W 54.12.

18?? RUGER VOL 2 PG 247 FOUND NE BT AND STUMP OF NW BT. SET SANDSTONE 17X11X4 AND PUT SMALL STONES AROUND IT. CALLS FOR 2641.48 TO W 1/4 CORNER AND 2635.22 TO SOUTH QUARTER CORNER OF SECTION 32.

1981 BARNES VOL 6 PG 174 DUG 1.5 DEEP AND FOND BED ROCK. PLACED CORNER ON LINE WITH S 1/4 31 AND NE CORNER SECTION 21 T29N R10E AT RECORD DISTANCE FROM THE NE CORNER OF SECTION 21.

1981 BARNES VOL 6 PG 169. 2636.02 TO S 1/4 CORNER SECTION, 2638.00 TO S 1/4 CORNER, AND 2649.49 TO E 1/4 CORNER OF SECTION 31.

1981 MAP #00114 FOUND CUT STONE 1964. CALLS FOR 672 TO NE CORNER OF SECTION 21.

FOUND ALUMINUM MONUMENT. ADDED CAP.

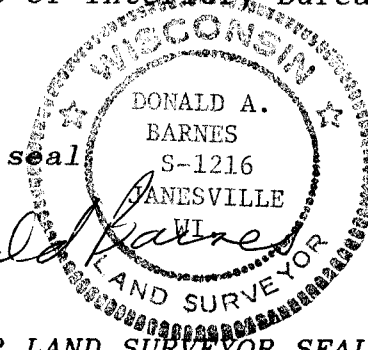
C) Was the corner restored through acceptance of (1) an obliterated evidence location, or, (2) a found perpetuated location?

ACCEPTED FOUND MONUMENT.

D) Describe any material discrepancy between the location of the corner as restored or reestablished and the location of that corner as previously restored or reestablished by distance and direction. Show the discrepancy on the plan view drawing under (a), above. Show the distances between the corner as previously restored or reestablished and (1) the corner as restored or reestablished, and (2) to at least 4 of the witness monuments shown on the drawing in (a), above.

(E) Was the corner reestablished through lost corner proportionate methods? If so, show the method, including the directions and distances to other public land survey corners used as evidence or used for proportioning the corner location.

I, Donald Barnes, hereby certify that the corner points as identified by the corner code index were, in a field survey on, December 11, 1991, established, re-established, monumented, re-monumented, recovered or restored as expressed below and in conformance with the regulations and rules as required in the current manual of survey instructions of the United States Department of Interior, Bureau of Land Management.



COUNTY SURVEYOR FILING DATA

Date of computer entry _____

Date microfilmed _____

Number of included sheets _____
CORNER CODE

AFFIX YOUR LAND SURVEYOR SEAL