

U.S. PUBLIC LAND SURVEY MONUMENT RECORD

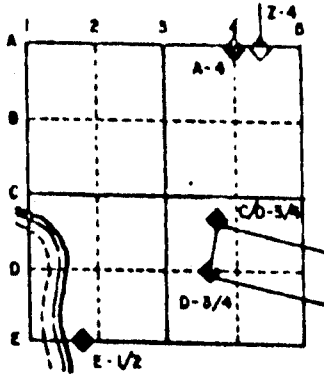
For Public Land Survey Corners in the
T. 1 N., R. 10 E.

CORNER CODE INDEX

1	2	3	4	5	6	7	8	9	10	11	12	13	14	15	16	17	18	19	20	21	22	23	24	25
A																								
B																								
C	6	5	4	3	2																			
D																								
E																								
F																								
G	7	8	9	10	11	12																		
H																								
I																								
J	16	17	18	19	20	21	22	23	24															
K																								
L																								
M																								
N																								
O																								
P	19	20	21	22	23	24																		
Q																								
R																								
S																								
T	30	29	28	27	26	25																		
U																								
V																								
W																								
X																								
Y																								
Z																								

PLACE MONUMENT SYMBOL (◆) AT PROPER LOCATION ON ABOVE INDEX

EXAMPLE



AVON TWP
ROCK COUNTY WI

IF AVAILABLE
STATE PLANE COORDINATES

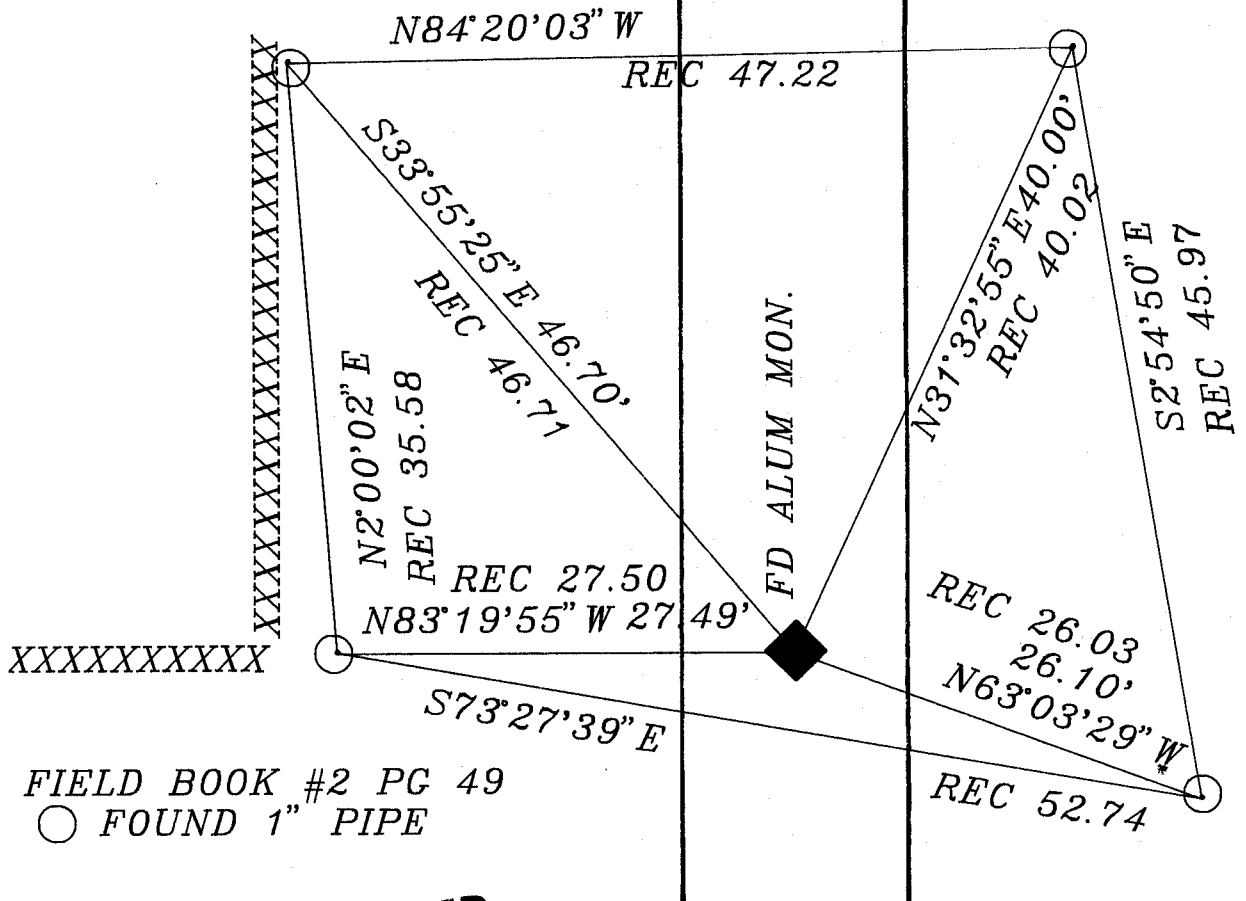
North (Y) _____ Eleve. (Z) _____
 East (X) _____ Zone _____
 Hor. Datum _____ Vert. Datum _____

◆ CORNER MONUMENT

○ WITNESS MONUMENT

HOPKINS RD

BEARINGS ARE BASED ON: ASSUMED



FIELD BOOK #2 PG 49
○ FOUND 1" PIPE

MICROFILMED

SHEET ___ OF ___

CORNER CODE: V5

(B) Describe any record evidence, monument evidence, occupational evidence, testimonial evidence or any other material evidence you considered, and whether the monument was found or placed.

1833 HARRISON ORIGINAL SURVEYOR. SET COR TO SECS 29,30,31,32. POST & RAISED A MOUND. CALLS FOR 2608.65 TO THE S 1/4 CORNER OF SECTION 29 AND 2640 TO THE S 1/4 CORNER OF SECTION 30.

1878 RUGER VOL 2 PG 247 PLACED LIMESTONE 16X4X2 2 1/2 & PUT HH STONES ON E & W. CALLS FOR 2614.59 TO N 1/4 COR AND 2671.68 TO W 1/4 CORNERS OF SECTION 32. VARIANCE SHOWS THAT THE CORNER IS NOT ON LINE WITH THE NE AND SE CORNERS OF SECTION 31 BUT IS ON LINE WITH THE N 1/4 CORNER AND NE CORNERS OF SECTION 32.

1972 LEE VOL 4 PG 563. WPL DUG AND FOUND BROKEN LIMESTONE STANDING UPRIGHT WITH HH ON E & W. REFERENCED CORNER.

FOUND ALUMINUM MONUMENT AND REFERENCE MONUMENTS. ADDED CAP.

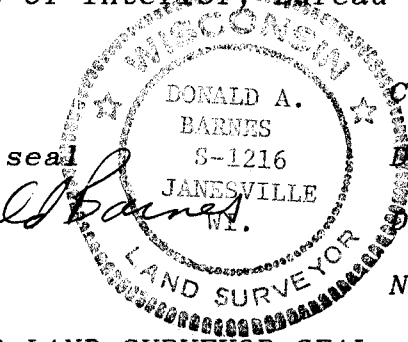
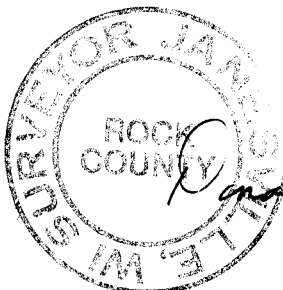
C) Was the corner restored through acceptance of (1) an obliterated evidence location, or, (2) a found perpetuated location?

ACCEPTED FOUND MONUMENT.

D) Describe any material discrepancy between the location of the corner as restored or reestablished and the location of that corner as previously restored or reestablished by distance and direction. Show the discrepancy on the plan view drawing under (a), above. Show the distances between the corner as previously restored or reestablished and (1) the corner as restored or reestablished, and (2) to at least 4 of the witness monuments shown on the drawing in (a), above.

(E) Was the corner reestablished through lost corner proportionate methods? If so, show the method, including the directions and distances to other public land survey corners used as evidence or used for proportioning the corner location.

I, Donald Barnes, hereby certify that the corner points as identified by the corner code index were, in a field survey on, December 16, 1991, established, re-established, monumented, re-monumented, recovered or restored as expressed below and in conformance with the regulations and rules as required in the current manual of survey instructions of the United States Department of Interior Bureau of Land Management.



COUNTY SURVEYOR FILING DATA

Date of computer entry _____

Date microfilmed _____

Number of included sheets _____
CORNER CODE

AFFIX YOUR LAND SURVEYOR SEAL