

U.S. PUBLIC LAND SURVEY MONUMENT RECORD

For Public Land Survey Corners in:

WI ADMINISTRATIVE CODE A-E 7.08 REQUIREMENT

T. 1N., R. 10E

CORNER CODE INDEX

A	1	2	3	4	5	6	7	8	9	10	11	12	13	14	15	16	17	18	19	20	21	22	23	24	25
B	6																								
C		5																							
D																									
E																									
F	1	8																							
G																									
H																									
I																									
J																									
K	13	11																							
L																									
M	18	17	16																						
N																									
O																									
P	19	20	21	22																					
Q																									
R																									
S	30	29	28	27	26																				
T																									
U																									
V																									
W																									
X	31	32	33	34	35																				
Y																									
Z																									

AVON TWP

ROCK COUNTY WI

IF AVAILABLE
ROCK COUNTY COORDINATES PREFERRED

North _____ Elev. _____

East _____

Hor. Datum _____ Vert. Datum _____


LATITUDE $42^{\circ}30'48.44127''$ ELLIPS. HT. _____

LONGITUDE $89^{\circ}17'50.64696''$ 633.24'

GPS (X) TRAVERSE (X) _____

BASED ON THE FOLLOWING CONTROL:

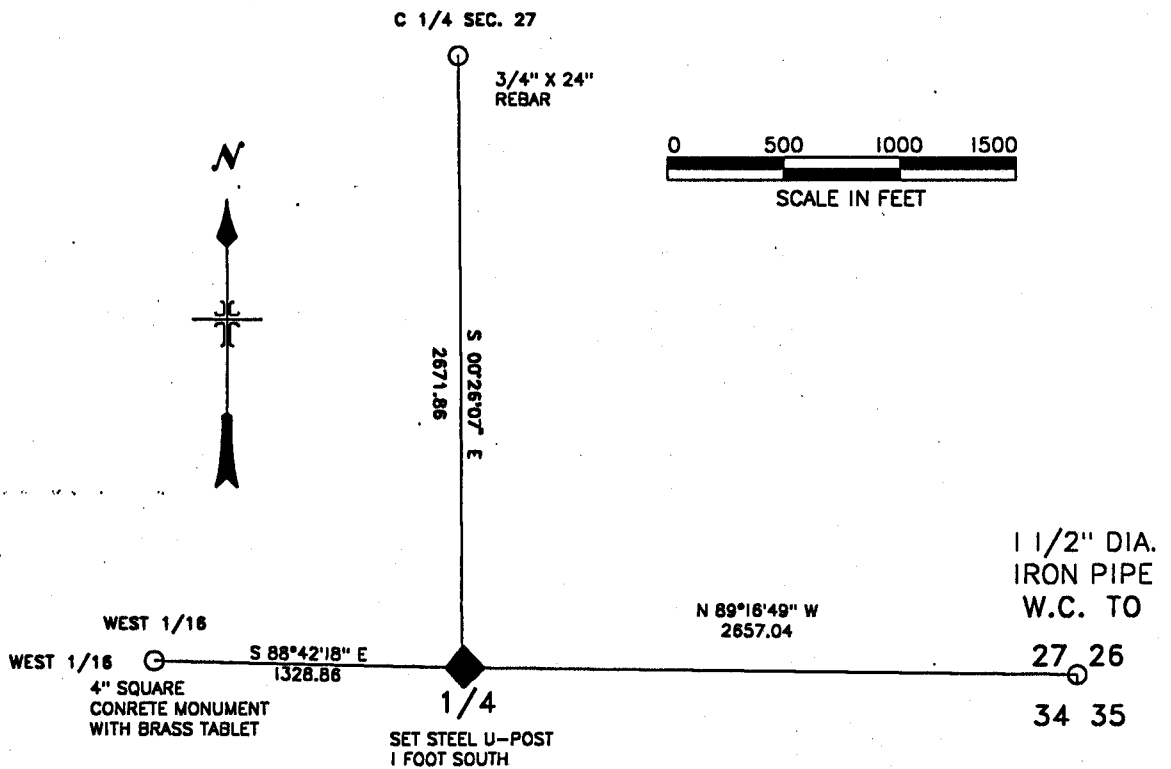
Avon Azimuth Mark-GPS 312A

PLACE MONUMENT SYMBOL  AT PROPER LOCATION ON ABOVE INDEX

 CORNER MONUMENT

 WITNESS MONUMENT

BEARINGS ARE BASED ON: WIS. STATE GRADE NA83 1991



FIELD BOOK _____ PAGE # _____

SHEET 1 OF 1

SHOW A PLAN VIEW DRAWING DEPICTING THE CORNER MONUMENT AND SURROUNDING PHYSICAL FEATURES, INCLUDING THE EXCAVATION AREA AND DEPTH.

PLANNING & ZONING COMMITTEE ADOPTED THE ABOVE FORM ON 12/2/1982

CORNER CODE V-15

(B) Describe any record evidence, monument evidence, occupational evidence, testimonial evidence or any other material evidence you considered, and whether the monument was found or placed.

Recovered 3/4" diameter pin as recovered by Hugh Lee, RLS #790 in 1967. It appears Lee had set it by proportionate measure.

C) Was the corner restored through acceptance of (1) an obliterated evidence location, or, (2) a found perpetuated location?

Found perpetuated loaction.

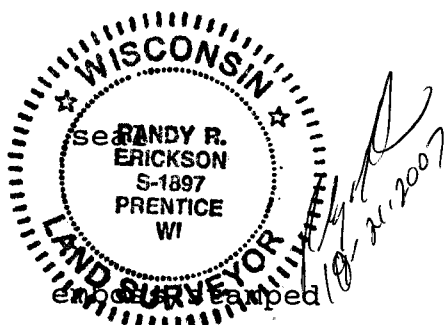
D) Describe any material discrepancy between the location of the corner as restored or reestablished and the location of that corner as previously restored or reestablished by distance and direction. Show the discrepancy on the plan view drawing under (a), above. Show the distances between the corner as previously restored or reestablished and (1) the corner as restored or reestablished, and (2) to at least 4 of the witness monuments shown on the drawing in (a), above.

none

(E) Was the corner reestablished through lost corner proportionate methods? If so, show the method, including the directions and distances to other public land survey corners used as evidence or used for proportioning the corner location.

N/A

I, Randy Erickson, hereby certify that the corner location as identified by the corner code index was determined by me under by direction and control and that this U.S. Public Land Survey Monument Record is correct and complete to the best of my knowledge and belief.



Number of included sheets _____

CORNER CODE

A-E 7.08 REQUIREMENT

V-15