

U.S. PUBLIC LAND SURVEY MONUMENT RECORD

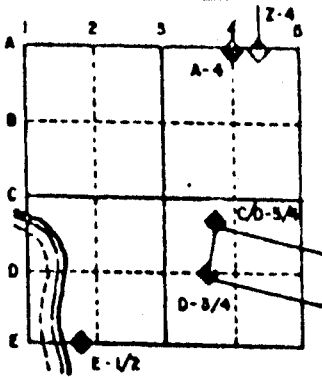
For Public Land Survey Corners in the
T. 1 N., R. 10 E.

CORNER CODE INDEX

	1	2	3	4	5	6	7	8	9	10	11	12	13	14	15	16	17	18	19	20	21	22	23	24	25	
A																										
B																										
C																										
D																										
E																										
F																										
G																										
H																										
I																										
J																										
K																										
L																										
M																										
N																										
O																										
P																										
Q																										
R																										
S																										
T																										
U																										
V																										
W																										
X																										
Y																										
Z																										

PLACE MONUMENT SYMBOL (◆) AT PROPER LOCATION ON ABOVE INDEX

EXAMPLE



Avon TWP
ROCK COUNTY WI

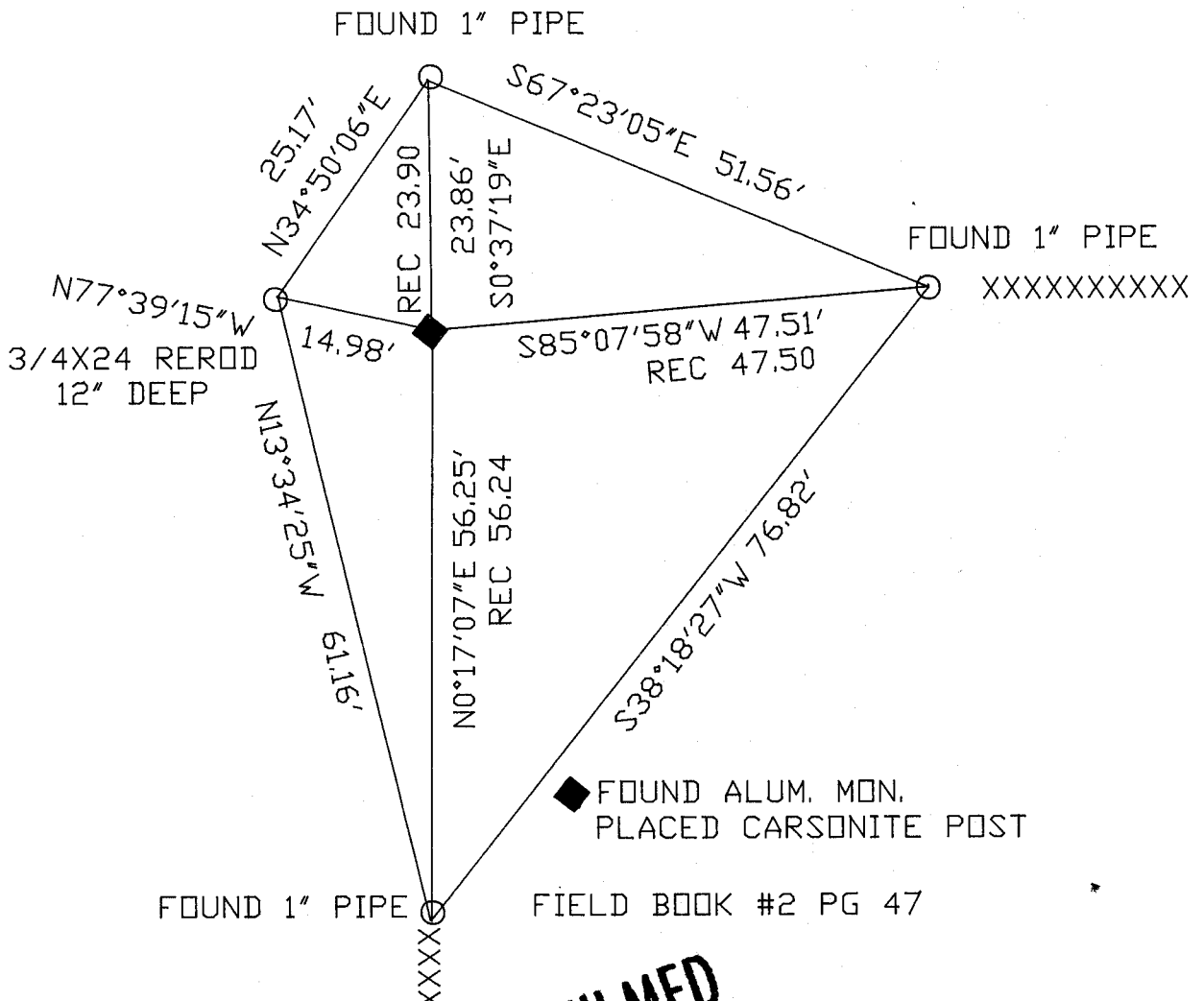
IF AVAILABLE
STATE PLANE COORDINATES

North (Y) _____ Eleve. (Z) _____
 East (X) _____ Zone _____
 Hor. Datum _____ Vert. Datum _____

◆ CORNER MONUMENT

○ WITNESS MONUMENT

BEARINGS ARE BASED ON: ASSUMED



MICROFILMED

SHEET ___ OF ___

CORNER CODE: V /

(B) Describe any record evidence, monument evidence, occupational evidence, testimonial evidence or any other material evidence you considered, and whether the monument was found or placed.

1833 HARRISON ORIGINAL SURVEY SET A POST FOR COR TO SEC 25 X 36 (T1N R9E) FR. WH. A BURR OAK 12 BEARS S7W 42.9' AND A BURR OAK 18 INCHES BEARS S25W 361.02.

1932 SUNNY VOL 3 PG 216 SHOWS A FENCE INTERSECTION WITH A DISTANCE OF 5299.0 TO THE SW CORNER OF SECTION 31 AND 2649.5 TO A POINT THAT HE USED TO ESTABLISH THE E/W 1/4 LINE OF SECTION 31.

1975 BICKEL PLAT OF SURVEY. MAPS SHOWS 2653.34 TO THE W 1/4 CORNER OF SECTION 30 AND 5289.62 TO NE CORNER OF SECTION 31. ALSO CALLS FOR AN ANGLE OF 91-08-58 AT THE NW CORNER OF SECTION 31 FROM THE W 1/4 CORNER OF SECTION 30 TO THE NE CORNER OF SECTION 31. DOES NOT STATE THE TYPE OF MONUMENT THAT HE FOUND OR PLACED.

1978 TALARCZYK (GREEN COUNTY TIE SHEET) CALLS FOR CAST ALUMINUM MONUMENT. SHOWS 3 REFERENCE TIES. STATES THAT THE CORNER WAS SET BY PROPORTIONATE MEASUREMENT & EXISTING PHYSICAL EVIDENCE.

TALARCZYK REVIEWED HIS FIELD NOTES AND TOLD ME THAT HE FOUND NOTHING AND PLACED A ALUMINUM MONUMENT. FOUND ALUMINUM MONUMENT IN LINE WITH E/W FENCE AND N/S FENCE. PLACED CARSONITE NEXT TO MONUMENT. THE ANGLE FROM THE W 1/4 CORNER OF SECTION 30 TO THE NE CORNER OF SECTION 31 AT THE NW CORNER OF SECTION 31 IS 91-05-16 AND THE ANGLE FROM THE NW CORNER OF SECTION 31 TO THE NE CORNER OF SECTION 31 AT THE INTERSECTION POINT OF THE BICKEL'S RECORD DISTANCES IS 91-09-27. THIS INTERSECTION POINT ALSO PLACES THE W 1/4 CORNER OF SECTION 30 ON LINE WITH THE NW CORNER OF SECTION 30 AS BICKEL CALLS FOR. ALSO THE ANGLE FROM THIS INTERSECTION POINT TO THE E 1/4 CORNER OF SECTION 30 AT THE NE CORNER OF SECTION 31 IS 88-33-38. THESE ANGLES ARE MORE IN HARMONY WITH BICKELS RECORD ANGLES AT THE INTERSECTION POINT THAN THE FOUND MONUMENT.

SEARCHED AND FOUND NOTHING AT THE INTERSECTION OF BICKEL'S DISTANCES.

C) Was the corner restored through acceptance of (1) an obliterated evidence location, or, (2) a found perpetuated location?

ACCEPTED FOUND MONUMENT.

D) Describe any material discrepancy between the location of the corner as restored or reestablished and the location of that corner as previously restored or reestablished by distance and direction. Show the discrepancy on the plan view drawing under (a), above. Show the distances between the corner as previously restored or reestablished and (1) the corner as restored or reestablished, and (2) to at least 4 of the witness monuments shown on the drawing in (a), above.

BICKEL'S MAP INDICATES THAT EITHER HIS MAP IS IN ERROR OR THIS MONUMENT IS NOT THE LOCATION THAT HE USED.

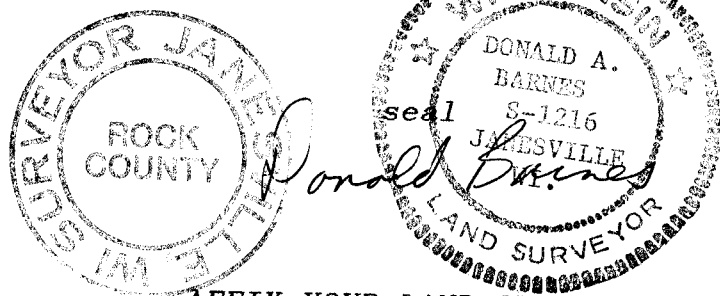
I, Donald Barnes, hereby certify that the corner points as identified by the corner code index were, in a field survey on, DECEMBER 10, 1991, established, re-established, monumented, re-monumented, recovered or restored as expressed below and in conformance with the regulations and rules as required in the current manual of survey instructions of the United States Department of Interior Bureau of Land Management.

COUNTY SURVEYOR FILING DATA

Date of computer entry _____

Date microfilmed _____

Number of included sheets _____
CORNER CODE



AFFIX YOUR LAND SURVEYOR SEAL