

**U.S. PUBLIC LAND SURVEY MONUMENT RECORD**

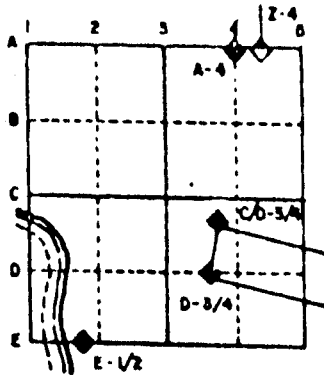
For Public Land Survey Corners in the  
T. 1 N., R. 10 E.

**CORNER CODE INDEX**

	1	2	3	4	5	6	7	8	9	10	11	12	13	14	15	16	17	18	19	20	21	22	23	24	25
A																									
B																									
C	6																								
D		5																							
E			4																						
F				3																					
G					2																				
H	7																								
I		8																							
J			9																						
K				10																					
L					11																				
M						12																			
N	16																								
O		17																							
P			18																						
Q				19																					
R					20																				
S						21																			
T							22																		
U								23																	
V									24																
W										25															
X	30	29	28	27	26	25																			
Y																									
Z																									

PLACE MONUMENT SYMBOL (◆) AT PROPER LOCATION ON ABOVE INDEX

**EXAMPLE**

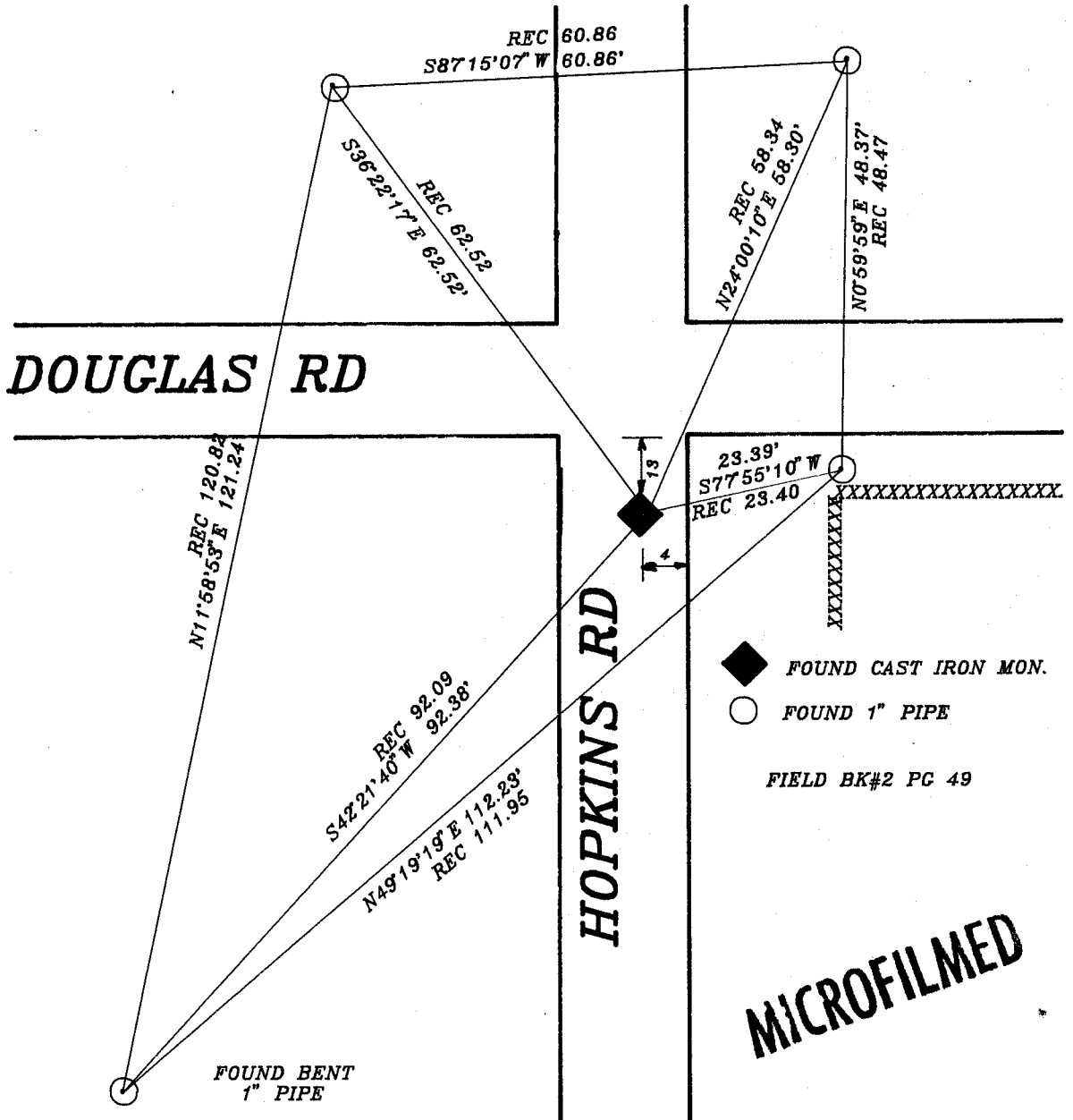


AVON TWP  
ROCK COUNTY WI

IF AVAILABLE  
STATE PLANE COORDINATES

North (Y) \_\_\_\_\_ Eleve. (Z) \_\_\_\_\_  
 East (X) \_\_\_\_\_ Zone \_\_\_\_\_  
 Hor. Datum \_\_\_\_\_ Vert. Datum \_\_\_\_\_

◆ CORNER MONUMENT      ○ WITNESS MONUMENT



**MICROFILMED**

(B) Describe any record evidence, monument evidence, occupational evidence, testimonial evidence or any other material evidence you considered, and whether the monument was found or placed.

1833 HARRISON ORIGINAL SURVEYOR. SET POST FOR 1/4 SEC. CORNER. POST & RAISED MOUND. CALLS FOR 2640 TO THE NE AND SE CORNERS OF SECTION 30.

1972 LEE VOL 4 PG 563 PLACED CAST IRON MONUMENT AND REFERENCED SAME. STATES NOTHING ABOUT HOW HE ESTABLISHED THE CORNER.

1972 LEE VOL 4 PG 583 SHOWS TIES AS MAPPED ON PG 563.

1975 BICKEL PLAT OF SURVEY. CALLS FOR 5255.79 TO THE E 1/4 CORNER OF SECTION 29, 2669.86 TO THE SE CORNER, 2669.86 TO THE NE CORNER, AND 2664.54 TO THE CENTER OF SECTION 30. ALSO CALLS FOR AN ANGLE OF 88-44-40 FROM THE CENTER TO THE NE CORNERS OF SECTION 30 AND 91-15-20 FROM THE SE CORNER TO THE CENTER OF SECTION 30.

FOUND CAST IRON MONUMENT. ALL ANGLES AND DISTANCES ARE IN HARMONY WITH BICKELS.

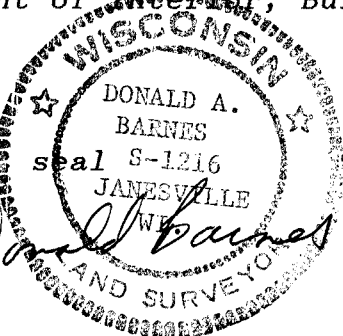
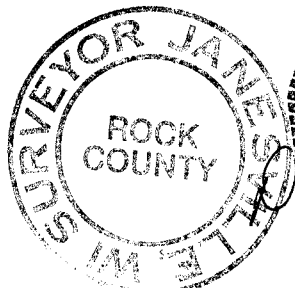
C) Was the corner restored through acceptance of (1) an obliterated evidence location, or, (2) a found perpetuated location?

ACCEPTED FOUND MONUMENT.

D) Describe any material discrepancy between the location of the corner as restored or reestablished and the location of that corner as previously restored or reestablished by distance and direction. Show the discrepancy on the plan view drawing under (a), above. Show the distances between the corner as previously restored or reestablished and (1) the corner as restored or reestablished, and (2) to at least 4 of the witness monuments shown on the drawing in (a), above.

(E) Was the corner reestablished through lost corner proportionate methods? If so, show the method, including the directions and distances to other public land survey corners used as evidence or used for proportioning the corner location.

I, Donald Barnes, hereby certify that the corner points as identified by the corner code index were, in a field survey on, December 16, 1991, established, re-established, monumented, re-monumented, recovered or restored as expressed below and in conformance with the regulations and rules as required in the current manual of survey instructions of the United States Department of Interior, Bureau of Land Management.



COUNTY SURVEYOR FILING DATA

Date of computer entry \_\_\_\_\_

Date microfilmed \_\_\_\_\_

Number of included sheets \_\_\_\_\_  
CORNER CODE

AFFIX YOUR LAND SURVEYOR SEAL