

U.S. PUBLIC LAND SURVEY MONUMENT RECORD

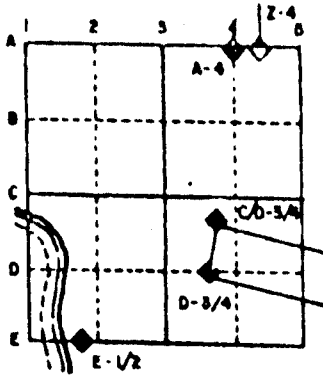
For Public Land Survey Corners in the
T. 1 N., R. 10 E.

CORNER CODE INDEX

	1	2	3	4	5	6	7	8	9	10	11	12	13	14	15	16	17	18	19	20	21	22	23	24	25
A																									
B																									
C	6																								
D		5																							
E			4																						
F				3																					
G					2																				
H																									
I																									
J	7																								
K		8																							
L			9																						
M				10																					
N					11																				
O						12																			
P							13																		
Q								14																	
R									15																
S										16															
T											17														
U												18													
V													19												
W														20											
X															21										
Y																22									
Z																	23								
																		24							
																			25						
																				26					
																					27				
																						28			
																							29		
																								30	
																									31
																									32
																									33
																									34
																									35
																									36

PLACE MONUMENT SYMBOL (◆) AT PROPER LOCATION ON ABOVE INDEX

EXAMPLE



Avon TWP
ROCK COUNTY WI

IF AVAILABLE
STATE PLANE COORDINATES

North (Y) _____ Eleve. (Z) _____
 East (X) _____ Zone _____
 Hor. Datum _____ Vert. Datum _____

◆ CORNER MONUMENT

○ WITNESS MONUMENT

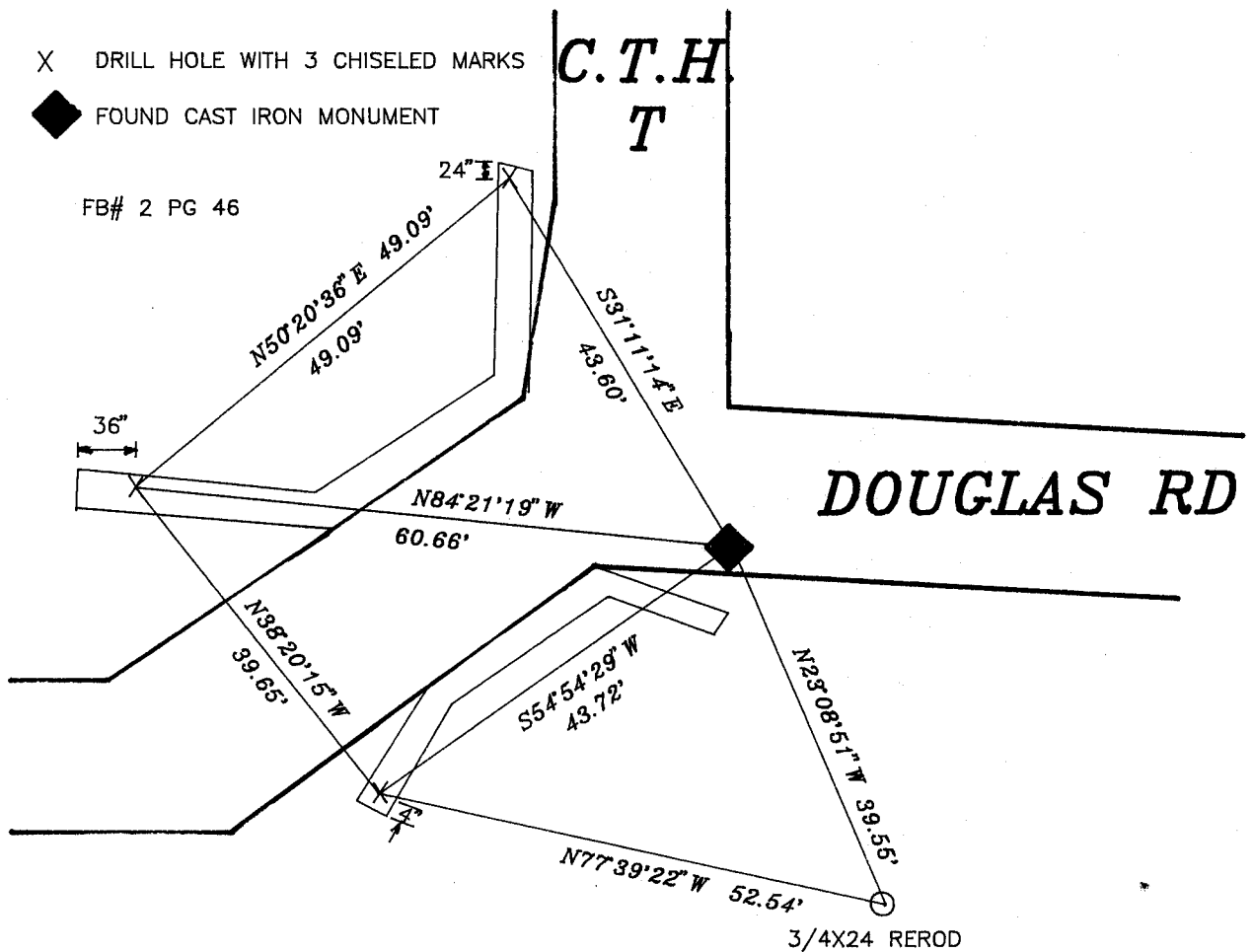
- X DRILL HOLE WITH 3 CHISELED MARKS
- ◆ FOUND CAST IRON MONUMENT

FB# 2 PG 46

C.T.H.
T

DOUGLAS RD

BEARINGS ARE BASED ON: ASSUMED



MICROFILMED

SHEET ___ OF ___

CORNER CODE: T1

(B) Describe any record evidence, monument evidence, occupational evidence, testimonial evidence or any other material evidence you considered, and whether the monument was found or placed.

1833 HARRISON. ORIGINAL SURVEYOR. SET A POST FOR COR TO 1/4 SEC IN MARSH. IMPRACTICABLE TO ESTABLISH COR. WATER DEEP AND TIMBER DISTANT. CALLS FOR 2640 TO NW AND SW CORNERS OF SECTION 30.

1972 LEE VOL 4 PG 583 PLACED CAST IRON MONUMENT AND REFERENCED SAME.

1975 BICKEL PLAT OF SURVEY. CALLS FOR A MONUMENT AND SHOWS THAT IT IS ON LINE AND MIDWAY BETWEEN THE NW AND SW CORNERS OF SECTION 30. ESTABLISHED AND MONUMENTED THE CENTER OF SECTION 30 AND THE S 1/16TH CORNER OF THE NW 1/4 OF SECTION 30. HIS ANGLE FROM THE NW TO THE CENTER OF SECTION 30 IS 90-58-22.

1978 TALARCZYK GREEN COUNTY CORNER TIE. CORNER SET BY PROPORTIONATE MEASUREMENT & EXISTING PHYSICAL EVIDENCE. CALLS FOR CAST ALUMINUM MONUMENT.

TALARCZYK REVIEWED HIS FIELD NOTES AND TOLD ME THAT HE FOUND A CAST IRON MONUMENT. FOUND CAST IRON MONUMENT THAT IS IN HARMONY WITH THE CENTER AND 1/16TH CORNERS OF SECTION 30. THE MONUMENT IS NOT IN HARMONY WITH BICKEL'S OTHER CALL DISTANCES AND ANGLES. THE MONUMENT IS 1.40' OFF LINE WITH THE NW AND SW CORNERS OF SECTION 30. IT IS .10 OFF LINE WITH THE INTERSECTION OF BICKELS DISTANCES TO THE NW AND SE CORNERS OF SECTION 30 AND THE NW CORNER OF SECTION 30. SEARCHED AND FOUND NOTHING AT THE MID POINT OF THE NW CORNER OF SECTION 30 AND THAT INTERSECTION POINT. SINCE THE CAST IRON MONUMENT IS ON LINE WITH THE FOUND MONUMENTS AT THE 1/16TH CORNER AND CENTER OF SECTION 30, THIS IS THE MONUMENT THAT BICKEL PLACED OR USED BUT IS NOT THE COMPUTED POSITION THAT HE USED FOR HIS SURVEY.

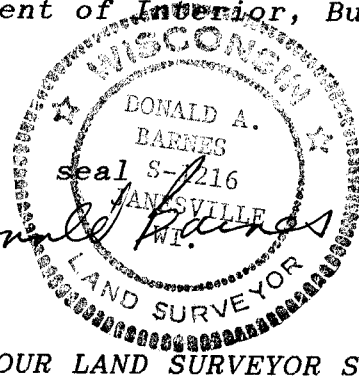
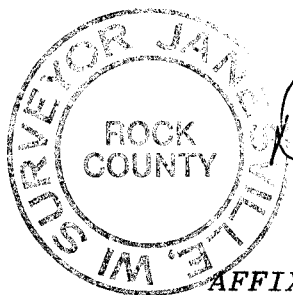
MONUMENT IS ON LINE WITH THE PIN FOUND AT THE S 1/16TH CORNER OF THE NW 1/4 OF SECTION 30 AND THE CENTER OF SECTION 30.

C) Was the corner restored through acceptance of (1) an obliterated evidence location, or, (2) a found perpetuated location?

ACCEPTED FOUND CORNER.

D) Describe any material discrepancy between the location of the corner as restored or reestablished and the location of that corner as previously restored or reestablished by distance and direction. Show the discrepancy on the plan view drawing under (a), above. Show the distances between the corner as previously restored or reestablished and (1) the corner as restored or reestablished, and (2) to at least 4 of the witness monuments shown on the drawing in (a), above.

I, Donald Barnes, hereby certify that the corner points as identified by the corner code index were, in a field survey on, DECEMBER 10, 1991, established, re-established, monumented, re-monumented, recovered or restored as expressed below and in conformance with the regulations and rules as required in the current manual of survey instructions of the United States Department of Interior, Bureau of Land Management.



COUNTY SURVEYOR FILING DATA

Date of computer entry _____

Date microfilmed _____

Number of included sheets _____
CORNER CODE

AFFIX YOUR LAND SURVEYOR SEAL

T/