

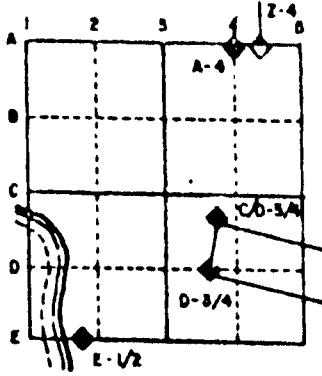
**U.S. PUBLIC LAND SURVEY MONUMENT RECORD**

For Public Land Survey Corners in the  
T. 1 N., R. 10 E.

**CORNER CODE INDEX**

	1	2	3	4	5	6	7	8	9	10	11	12	13	14	15	16	17	18	19	20	21	22	23	24	25
A																									
B																									
C	6	5	4	3	2																				
D																									
E																									
F																									
G	7	8	9	10	11	12																			
H																									
I																									
J																									
K	16	17	18	15	14	13																			
L																									
M																									
N																									
O																									
P	19	20	21	22	23	24																			
Q																									
R																									
S																									
T	30	29	28	27	26	25																			
U																									
V																									
W																									
X																									
Y																									
Z																									

**EXAMPLE**



AVON TWP  
ROCK COUNTY WI

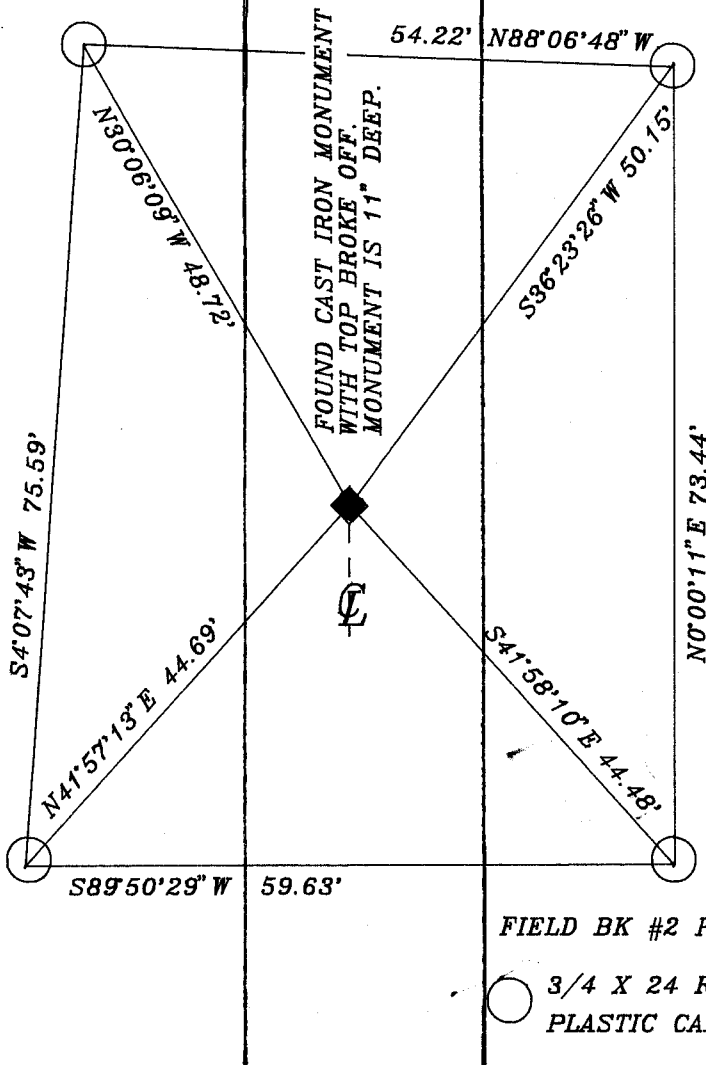
IF AVAILABLE  
STATE PLANE COORDINATES

North (Y) \_\_\_\_\_ Elev. (Z) \_\_\_\_\_  
 East (X) \_\_\_\_\_ Zone \_\_\_\_\_  
 Hor. Datum \_\_\_\_\_ Vert. Datum \_\_\_\_\_

PLACE MONUMENT SYMBOL (◆) AT PROPER  
LOCATION ON ABOVE INDEX

◆ CORNER MONUMENT      ○ WITNESS MONUMENT

**C.T.H.  
T**



BEARINGS ARE BASED ON: ASSUMED

**MICROFILMED**

FIELD BK #2 PG 52  
○ 3/4 X 24 REROD WITH PLASTIC CAP.

SHEET \_\_\_ OF \_\_\_

CORNER CODE: R1

(B) Describe any record evidence, monument evidence, occupational evidence, testimonial evidence or any other material evidence you considered, and whether the monument was found or placed.

1833 HARRISON. SET POST FOR COR TO SECTIONS 24 & 25 (T1N R9E) IN WEST EDGE OF BOTTOM. FROM WHICH A RED OAK 12" BEARS S19W 200.64' AND A BURR OAK 12" BEARS N26W 297'. CALLS FOR 5217.30 TO THE NE CORNER OF SECTION 30.

1972 LEE VOL 4 PG 563 PLACED CAST IRON MONUMENT. DOES NOT STATE WHAT HE FOUND OR HOW HE ESTABLISHED THE CORNER.

1975 BICKEL PLAT OF SURVEY CALLS FOR 5262.71 TO THE NE CORNER OF SECTION 30 AND 2653.34 TO THE W 1/4 CORNER OF SECTION 30 AND AN ANGLE OF 89-12-13 BETWEEN THOSE TWO CORNERS.

1978 TALARCZYK TOLD ME THAT HE FOUND A CAST IRON MONUMENT. A SECTION CORNER TIE SHEET IS ON FILE.

FOUND CAST IRON MONUMENT WITH THE TOP BROKE OFF. MONUMENT IS ABOUT 11" DEEP. TALARCZYK'S REFERENCE PIPES WERE DESTROYED.

THE CAST IRON MONUMENT IS 5265.77 TO THE NE CORNER AND 2648.90 TO THE W 1/4 CORNER OF SECTION 30. THE ANGLE TO THOSE CORNERS IS 89-11-57.

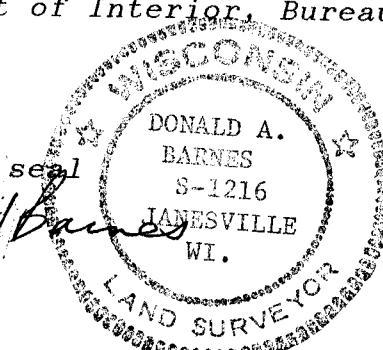
C) Was the corner restored through acceptance of (1) an obliterated evidence location, or, (2) a found perpetuated location?

ACCEPTED FOUND PERPETUATED LOCATION.

D) Describe any material discrepancy between the location of the corner as restored or reestablished and the location of that corner as previously restored or reestablished by distance and direction. Show the discrepancy on the plan view drawing under (a), above. Show the distances between the corner as previously restored or reestablished and (1) the corner as restored or reestablished, and (2) to at least 4 of the witness monuments shown on the drawing in (a), above.

(E) Was the corner reestablished through lost corner proportionate methods? If so, show the method, including the directions and distances to other public land survey corners used as evidence or used for proportioning the corner location.

I, Donald Barnes, hereby certify that the corner points as identified by the corner code index were, in a field survey on, December 16, 1991, established, re-established, monumented, re-monumented, recovered or restored as expressed below and in conformance with the regulations and rules as required in the current manual of survey instructions of the United States Department of Interior, Bureau of Land Management.



COUNTY SURVEYOR FILING DATA

Date of computer entry \_\_\_\_\_

Date microfilmed \_\_\_\_\_

Number of included sheets \_\_\_\_\_  
CORNER CODE

AFFIX YOUR LAND SURVEYOR SEAL