

U.S. PUBLIC LAND SURVEY MONUMENT RECORD

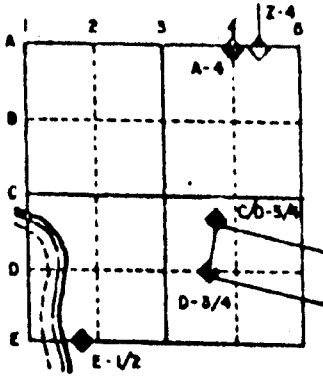
For Public Land Survey Corners in the
T. 1 N., R. 10 E.

CORNER CODE INDEX

	1	2	3	4	5	6	7	8	9	10	11	12	13	14	15	16	17	18	19	20	21	22	23	24	25
A																									
B																									
C																									
D																									
E																									
F																									
G																									
H																									
I																									
J																									
K																									
L																									
M																									
N																									
O																									
P																									
Q																									
R																									
S																									
T																									
U																									
V																									
W																									
X																									
Y																									
Z																									

PLACE MONUMENT SYMBOL (◆) AT PROPER LOCATION ON ABOVE INDEX

EXAMPLE



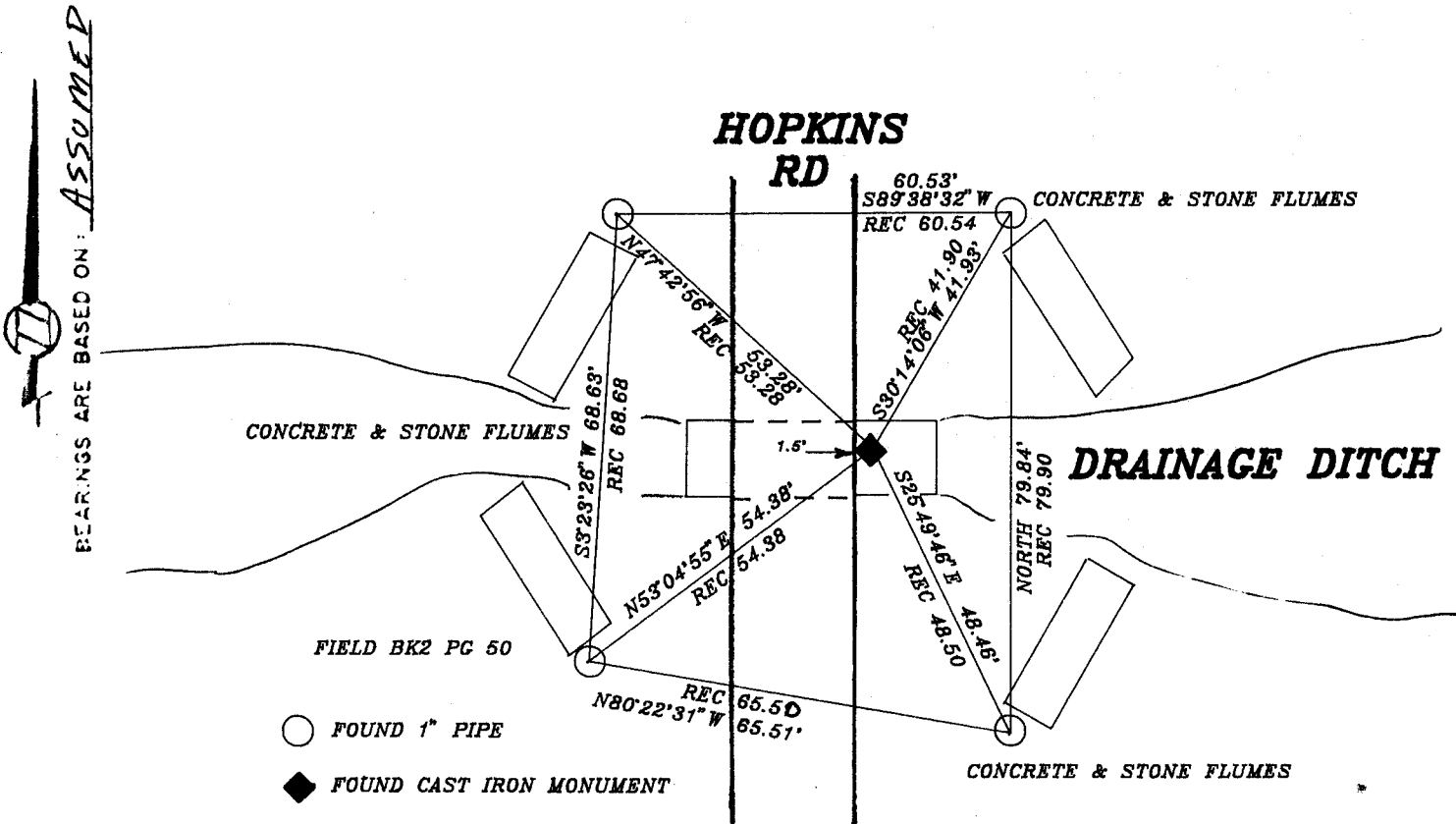
AVON _____ TWP
ROCK COUNTY WI

IF AVAILABLE
STATE PLANE COORDINATES

North (Y) _____ Eleve. (Z) _____
 East (X) _____ Zone _____
 Hor. Datum _____ Vert. Datum _____

◆ CORNER MONUMENT

○ WITNESS MONUMENT



MICROFILMED

SHEET _____ OF _____

CORNER CODE: R5

(B) Describe any record evidence, monument evidence, occupational evidence, testimonial evidence or any other material evidence you considered, and whether the monument was found or placed.

1833 HARRISON SET POST FOR COR TO SECS 19,20,29,20. POST & RAISED MOUND. CALLS FOR 2613.60 TO N 1/4 CORNER OF SECTION 29 AND 5217.30 TO NW CORNER OF SECTION 30.

1864 LOCKE VOL 1 PG 225 FOUND STAKE AND PLACED 12X7X5 LIMESTONE. CALLS FOR 2648.25 TO W 1/4 CORNER, 5274.06 TO SE CORNER, AND 2637.03 TO S 1/4 CORNER OF SECTION 20.

1972 LEE VOL 4 PG 563 & 583 PLACED CAST IRON MONUMENT AND REFERENCED SAME. DOES NOT STATE HOW HE ESTABLISHED CORNER.

1975 BICKLE PLAT OF SURVEY FOUND MONUMENT. CALLS FOR 5271.97 TO THE SE CORNER AND 2669.87 TO THE W 1/4 CORNERS OF SECTION 20 AND 2669.86 TO THE E 1/4 CORNER AND 5262.71 TO THE NW CORNERS OF SECTION 30. CALLS FOR AN ANGLE OF 90-54-03 FROM THE E 1/4 CORNER TO THE NW CORNERS OF SECTION 30.

FOUND CAST IRON MONUMENT. MONUMENT IS ABOVE C.M.P.

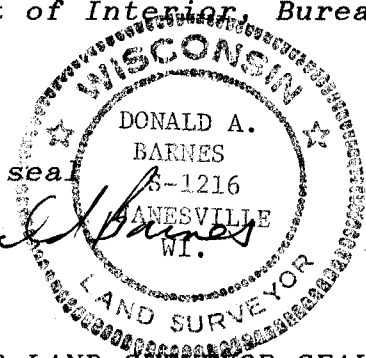
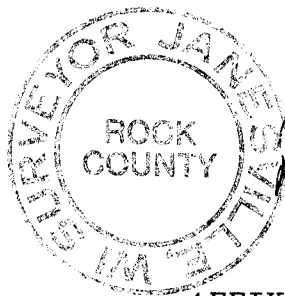
C) Was the corner restored through acceptance of (1) an obliterated evidence location, or, (2) a found perpetuated location?

ACCEPTED FOUND MONUMENT.

D) Describe any material discrepancy between the location of the corner as restored or reestablished and the location of that corner as previously restored or reestablished by distance and direction. Show the discrepancy on the plan view drawing under (a), above. Show the distances between the corner as previously restored or reestablished and (1) the corner as restored or reestablished, and (2) to at least 4 of the witness monuments shown on the drawing in (a), above.

(E) Was the corner reestablished through lost corner proportionate methods? If so, show the method, including the directions and distances to other public land survey corners used as evidence or used for proportioning the corner location.

I, Donald Barnes, hereby certify that the corner points as identified by the corner code index were, in a field survey on, December 16, 1991, established, re-established, monumented, re-monumented, recovered or restored as expressed below and in conformance with the regulations and rules as required in the current manual of survey instructions of the United States Department of Interior, Bureau of Land Management.



COUNTY SURVEYOR FILING DATA

Date of computer entry _____

Date microfilmed _____

Number of included sheets _____
CORNER CODE

AFFIX YOUR LAND SURVEYOR SEAL

R5