

U.S. PUBLIC LAND SURVEY MONUMENT RECORD

For Public Land Survey Corners in:

WI ADMINISTRATIVE CODE A-E 7.08 REQUIREMENT

T. 1 N., R. 10 E

CORNER CODE INDEX

A	1	2	3	4	5	6	7	8	9	10	11	12	13	14	15	16	17	18	19	20	21	22	23	24	25
B																									
C	6																								
D																									
E																									
F																									
G	1																								
H																									
I																									
J																									
K																									
L	18																								
M																									
N																									
O																									
P	19																								
Q																									
R																									
S																									
T																									
U	30																								
V																									
W																									
X	31																								
Y																									
Z																									

AVON TWP
ROCK COUNTY WI

IF AVAILABLE
ROCK COUNTY COORDINATES PREFERRED

North _____ Elev. _____

East _____

Hor. Datum _____ Vert. Datum _____

LATITUDE _____ ELLIPS. HT. _____

LONGITUDE _____

GPS (X) _____ TRAVERSE (X) _____

BASED ON THE FOLLOWING CONTROL:

PLACE MONUMENT SYMBOL AT PROPER LOCATION ON ABOVE INDEX

CORNER MONUMENT

WITNESS MONUMENT

(a)

BEARINGS ARE BASED ON:

FIELD BOOK _____ PAGE # _____

SHEET 1 OF 4

SHOW A PLAN VIEW DRAWING DEPICTING THE CORNER MONUMENT AND SURROUNDING PHYSICAL FEATURES, INCLUDING THE EXCAVATION AREA AND DEPTH.

PLANNING & ZONING COMMITTEE ADOPTED THE ABOVE FORM ON 12/2/1982

CORNER CODE N-5

AV563

(B) Describe any record evidence, monument evidence, occupational evidence, testimonial evidence or any other material evidence you considered, and whether the monument was found or placed.

1833 (MARCH) HARRISON WEST BET SEC 18 & 19 T1N R10E
2640 SET POST & RAISED A MOUND FOR COR TO 1/4 SEC
5214 INT. WEST BDY AT POST LAND &? SAME CLOSED
SUBDIVISION OF THIS TOWNSHIP MARCH 17TH 1833
GEORGE HARRISON.

NORTH BET SEC 19 & 20

2640 SET POST FOR 1/4 SEC CORNER. POST & RAISED
MOUND

5280 COR TO SEC 17,18,19, 20 ON RIGHT BANK OF
SUGAR CR (SEE BELOW) POST & RAISED MOUND.
TIMBER & CREEK BOTTOM SAME AS BEFORE

NOTE: THIS SEC COR IS THE MEANDERING
POST ON EAST LINE BETWEEN SECS 17 & 20
NORTH BET SECS 17 & 18

134.64 INT. SUGAR CRK CRS S.W. SET MEANDERING
POST AND RAISED A MOUND. LAND SAME AS
BEFORE

1834 HARRISON NORTH BET 17 & 18 CONT.

302.28 LEAVE RIVER SET MEANDER POST & ENTER
MARSH. ELM 12 S80W 83.82' & W.O. 20 N45W
300.3'

2640 QUARTER SEC COR RED O 12 N77W 472.56' RED
O 12 MARKED

2970 LEAVE MARSH & ENTER DRY PRAIRIE

5280 COR TO 7,8,17,18 POST & RAISED MOUND. LAND
1ST 1/2 LEVEL & WET 3RD RATE 2ND 1/2 LEVEL DRY
PRAIRIE

EAST ON RAND. BET 17 & 20

400.62' LEAVE RIVER SET ? POST

2640 TMPY 1/4 P & ENTER PRAIRIE

5326.2 INT. E BDY LAND 1ST 1/2 LEVEL 2ND RATE TIMBER B.
& W. O. 2ND 1/2 LEVEL 2ND RATE PRAIRIE

WEST COR WEST

2663.1 QUARTER SEC COR {W.O. 24 S53W 102.3' W.O 12
WEST 41.58'} W.O. 24 W.O. 12

4925.58 SUGAR CRK SET M.P. WILLOW 10 N14E 26.4
5326.2 SEC COR

MEANDER LINE OF SUGAR CRK

N61 1/2 E 337.9' TO M.P. BET 17 & 18

S55 1/2 E 429' SEC 17

S24 1/2 E 128.7' LA M.P BET 17 & 20

1977 BARNES VOL 5 PG 297 ANGLE AT NE COR SEC 18 FROM SE
COR SEC 18 TO N 1/4 COR SEC 18 IS 91-18-55

1977 BARNES VOL 5 PG 303 SET AT DOUBLE PROPORTIONATE
MEASUREMENT WITH THE NE & S 1/4 COR SEC 18, THE S 1/4
COR SEC 17 & THE E 1/4 COR SEC 19. SET ALUM. MON &
324' NORTH OF THE NORTH PVMT EDGE OF THE RD.

2002 BATTERMAN COUNTY COORDINATES ARE 218,510.74 N/S;
405,983.75 E/W

READJUSTED FIELD 1977 OBSERVATIONS AND USED BATTERMAN'S
GPS COORDINATES ON COMMON CORNERS TO CONTROL SURVEY.
ANGLE FROM E 1/4 COR SEC 19 TO N 1/4 COR SEC 19 AT NE COR SEC
19 IS 90-01-07, ANGLE AT NE COR SEC 18 FROM SE COR SEC 18 TO
N 1/4 COR SEC 18 IS 90-58-36 (BATTERMAN 90-58-36). THE
READJUSTMENT OF THE 1977 OBSERVATIONS INDICATE A BUST IN
THE N/S LOCATION AND E/W LOCATION. AN INCORRECT ORIGINAL
GOVERNMENT SURVEY MEASUREMENT WAS USED TO COMPUTE THE
POSITION. ALSO THERE WAS A BUST IN COMPUTING THE ANGLE
FROM THE TRAVERSE TO THE ALUMINUM MONUMENT.

SHEET 1 OF 4

Donald Barnes
April 30 2003

CORNER CODE N-5

AV563

C) Was the corner restored through acceptance of (1) an obliterated evidence location, or, (2) a found perpetuated location?

FD ANGLE COMPUTED FROM TRAVERSE STATION FOR PLACING ALUM MONUMENT WAS INCORRECT. AVON FB #1 PG 57 ANGLE USED WAS 90-35-09 AND IT SHOULD HAVE BEEN 100-35-09. THE DISTANCE 33.76 WAS CORRECT. ALSO AN INCORRECT ORIGINAL GOVERNMENT SURVEY MEASUREMENT WAS USED TO COMPUTE THE POSITION. BECAUSE OF THESE TWO BLUNDERS, I RECOMPUTED THE POSITION OF THE CORNER BASED ON THE U.S. GOVERNMENT RULES FOR A "LOST" CORNER. I PLACED A POLY. MON. AND LEFT THE ALUM IN PLACE. IT APPEARS THAT THE SUGAR RIVER WAS RELOCATED. THE ORIGINAL NOTES STATES THE CORNER IS ON THE RIGHT BANK AND THE RIVER IS 302.28' WIDE. THIS IS NOT CLOSE TO THE CURRENT WIDTH.

D) Describe any material discrepancy between the location of the corner as restored or reestablished and the location of that corner as previously restored or reestablished by distance and direction. Show the discrepancy on the plan view drawing under (a), above. Show the distances between the corner as previously restored or reestablished and (1) the corner as restored or reestablished, and (2) to at least 4 of the witness monuments shown on the drawing in (a), above.

DISCREPANCY IS SHOWN IN THE DRAWING.

(E) Was the corner reestablished through lost corner proportionate methods? If so, show the method, including the directions and distances to other public land survey corners used as evidence or used for proportioning the corner location.

YES.

I, **Donald Barnes**, hereby certify that the corner location as identified by the corner code index was determined by me under my direction and control and that this U.S. Public Land Survey Monument Record is correct and complete to the best of my knowledge and belief.

Seal

Donald Barnes

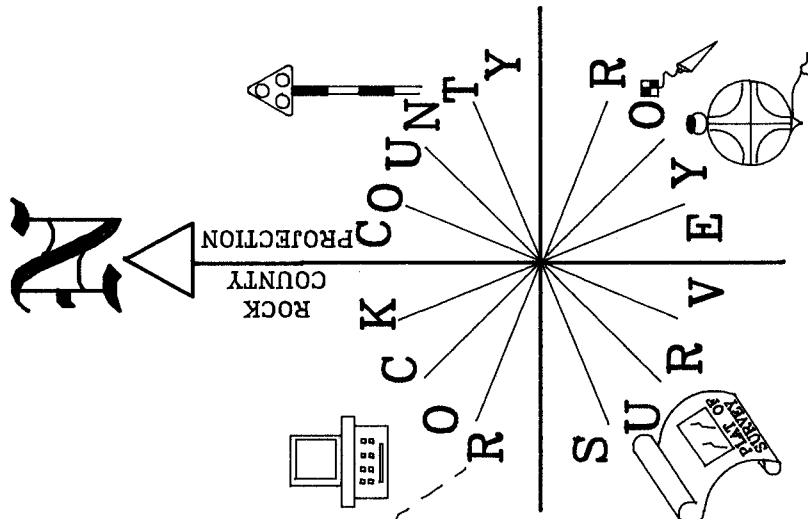
Emboss

April 30, 2003

SHEET 2 OF 4

CORNER CODE **N-5**

A.E. 7.08 REQUIREMENT



NOT TO SCALE
FB#2 PG 76

SUGAR RIVER

SE COR
SEC 18
AVON TWP
T1N R10E

WOODED AND
WET AREA
SE COR SEC 18

- POLY MON. WITH CARSONITE POST
- 3/4X24 REROD/ PLASTIC CAP

BELOIT/NEWARK RD

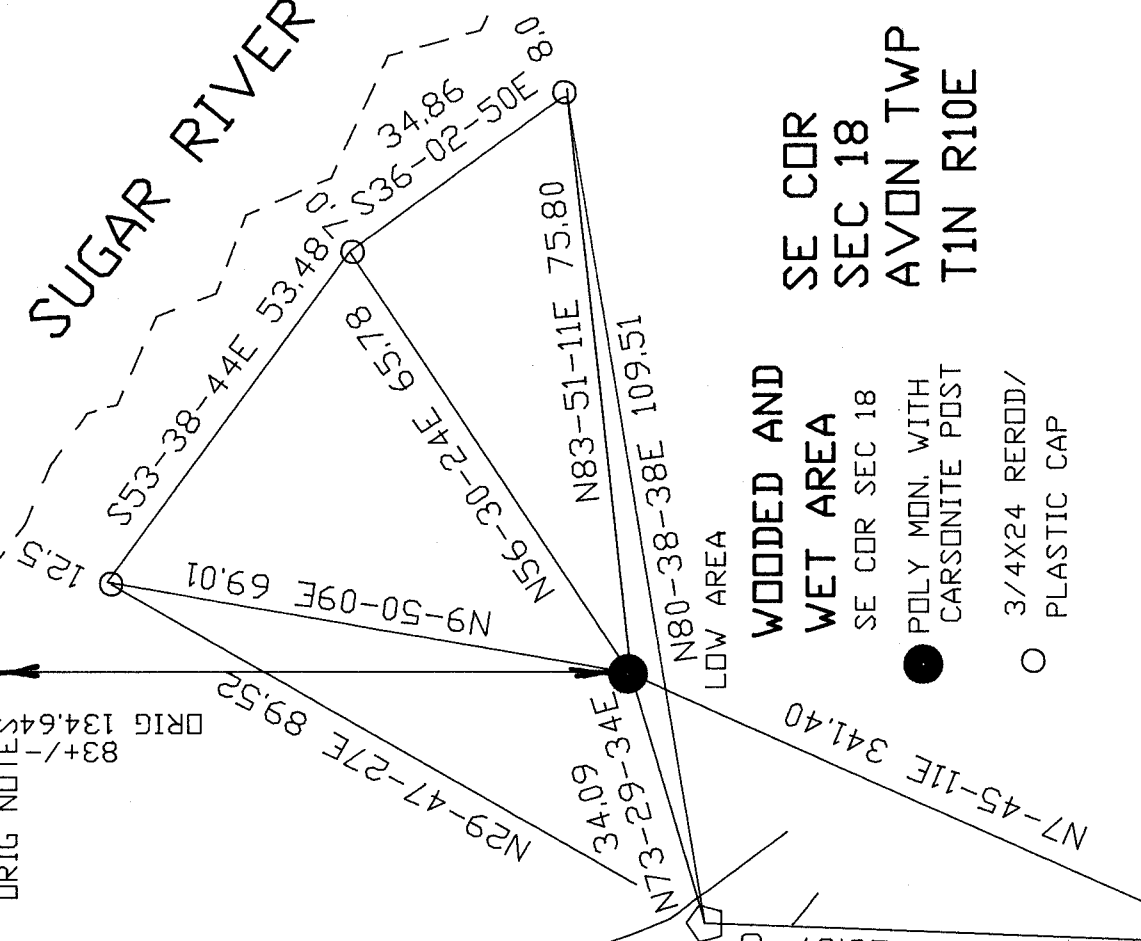
MAG NAIL
0.5' SOUTH
OF NORTH
PVMT EDGE

5 LARGE CMPS

SHEET 3 OF 4

N 1/2

MP
ORIG NOTES
83+/-
DRIG 134.644



Donna U. Brunner
EMBOSSSED
SEAL

APR. 29, 2003

ALUM. MON.
12" ABOVE GROUND

N2-19-49E 328.87

N7-45-11E 341.40

N73-29-34E 34.09

N80-38-38E 109.51

N83-51-11E 75.80

S56-30-24E 65.78

N9-50-09E 69.01

S53-38-44E 53.48

N12-51-11E 12.51

