

Paper weight-110# (minimum)

Black nonfading ink required

U.S. PUBLIC LAND SURVEY MONUMENT RECORD

For Public Land Survey Corners In:
T. 4 N. R. 10 E. 4th P.M.
CORNER CODE INDEX

WI ADMINISTRATIVE CODE A-E 7.08 REQUIREMENT
REV 10/23/2004 USMONREC.DWG

UNION TWP
ROCK COUNTY WI

IF AVAILABLE
ROCK COUNTY COORDINATES PREFERRED

A	1	2	3	4	5	6	7	8	9	10	11	12	13	14	15	16	17	18	19	20	21	22	23	24	25	A
B		6					5					4					3				2				1	B
C																										C
D																										D
E																										E
F																										F
G																										G
H																										H
J																										J
K																										K
L																										L
M																										M
N																										N
O																										O
P																										P
Q																										Q
R																										R
S																										S
T																										T
U																										U
V																										V
W																										W
X																										X
Y																										Y
Z																										Z

North _____ Elev. _____

East _____

Hor. Datum _____ Vert. Datum _____

LATITUDE _____ ELLIPS. HT. _____

LONGITUDE _____

NAD83(91) _____ NETWORK ADJ. YR 2010 _____

GPS (X) _____ TRAVERSE (X) X

BASED ON THE FOLLOWING CONTROL:

◆ CORNER MONUMENT

○ WITNESS MONUMENT

BEARINGS ARE BASED ON: ROCK COUNTY PROJECTION

FIELD BOOK _____ PAGE # _____
OR OBSERVATION SHEET _____

SHEET 1 OF 3

SHOW A PLAN VIEW DRAWING DEPICTING THE CORNER MONUMENT AND SURROUNDING PHYSICAL FEATURES, INCLUDING THE EXCAVATION AREA AND DEPTH.

PLANNING & ZONING COMMITTEE ADOPTED THIS FORM ON 12/2/1982

CORNER CODE L-5

UN555 E1/4CORSEC18

(B) Describe any record evidence, monument evidence, occupational evidence, testimonial evidence or any other material evidence you considered, and whether the monument was found or placed.

- 1833 HARRISON T4N T10E 4TH MER NORTH BET SECS 17 & 18
2640.00 QUARTER SEC COR. SET POST & RAISED
MOUND
4488.00 LEAVE PRAIRIE & ENTER TIMBER
5280.00 COR TO SECS 7,8,17,18 {BURR O. 18 N40W
9.9'; BURR O 18 N42E 27.72'; BURR O 12 S73E
48.18'; BURR O 12 S16W 54.78' LAND 1ST 3/4
OF THE MILE LEVEL 1ST RATE PRAIRIE GROWTH
OF HAZE, GRASS & WEEDS
- 1856 CHURCH VOL 1 PG 59 USED TO SUBDIVIDE SEC 17, VAR7-30
2664.26 TO CENTER OF SEC 17, & 5328.51 TO E 1/4 COR
SEC 17.
- 1861 RUGER VOL 1 PG 166 SET LIMESTONE 18X8X7. VAR 7-49
2640 TO CENTER OF SEC 18, & VAR7-49 5443.68 TO W 1/4
COR SEC 18
- 1870 RUGER AUG 26 REMON-88 NORTH ON EAST LINE OF SE
1/4 SEC 18 ON A VAR 6-50; AT
2647.42 INTERSECTED QUARTER LINE AT QUARTER
CORNER. FOUND LIMESTONE AT CORNER SET BY
SELF IN PREVIOUS SURVEY. AUG 26 1870
NORTH ON EAST LINE OF NE 1/4 SEC 18
ON A VAR 7-23; AT
2650.06 INTERSECTED NORTH BOUNDREY LINE 3.3'
WEST OF CORNER. FOUND STAKE SURROUNDED
BY HARD HEAD STONES AT CORNER SET BY SELF
IN A PREVIOUS SURVEY. COR VAR 7-19
- 1890 BLEEDORN VOL 2 PG 430 MON. USED TO SUBDIVIDE SEC
17
- 1971 LEE VOL 4 PG 504 DUG & FD. NOTHING.
- 1979 BARNES VOL 5 PG 527 FOUND CUT LIMESTONE 0.5' DEEP.
REFERENCED SAME.
- 1979 BARNES VOL 5 PG 528 SO-47-38E 2651.71 TO SE COR SEC
18, N1-07-18W 2656.21 TO NW COR SEC 17, & N89-04-30E
5355.00 TO E 1/4 COR SEC 17

FD REFERENCE MONUMENTS, OLD 1979 TRAVERSE PK, & PK NEAR
CORNER. SINCE THE CUT LIMESTONE IS ONLY ABOUT 0.5' DEEP, I
PLACED A STEEL SURVEY SPIKE AT THE PVMT SURFACE. I PLACED A
CARSONITE POST ON THE WEST SIDE OF THE FD REFERENCE PIPE
AND ON THE EAST SIDE OF THE N/S FENCE.

BEAL
Donald
Himboss
Barnes

OCT 20, 2011

SHEET 1 OF 3

CORNER CODE L-5

UN555 E1/4CORSEC18

C) Was the corner restored through acceptance of (1) an obliterated evidence location, or, (2) a found perpetuated location?

ACCEPTED THE FD CUT LIMESTONE. SINCE THE ORIGINAL TRAVERSE PK WAS 0.3' DEEP AND THE FOUND PK NEAR THE COR WAS ONLY 0.1', I BELIEVE IT WAS NOT PLACED BY ME.

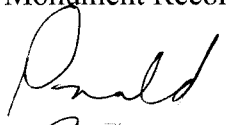

D) Describe any material discrepancy between the location of the corner as restored or reestablished and the location of that corner as previously restored or reestablished by distance and direction. Show the discrepancy on the plan view drawing under (a), above. Show the distances between the corner as previously restored or reestablished and (1) the corner as restored or reestablished, and (2) to at least 4 of the witness monuments shown on the drawing in (a), above.

THE FOUND PK IS S7-44-25E 0.12' FROM THE SURVEY SPIKE. THE SURVEY SPIKE IS IN HARMONY WITH THE DISTANCES TO THE REFERENCE MONUMENTS AND THE OLD PK TRAVERSE POINT. THE RECORD ANGLE AT THE PK TRAVERSE TO THE LIMESTONE IS ALSO IN HARMONY.

(E) Was the corner reestablished through lost corner proportionate methods? If so, show the method, including the directions and distances to other public land survey corners used as evidence or used for proportioning the corner location.

NO

I, **Donald Barnes**, hereby certify that the corner location as identified by the corner code index was determined by me under my direction and control and that this U.S. Public Land Survey Monument Record is correct and complete to the best of my knowledge and belief.


SEAL

Barnes
Humboldt

OCT 20, 2011

SHEET 2 OF 3

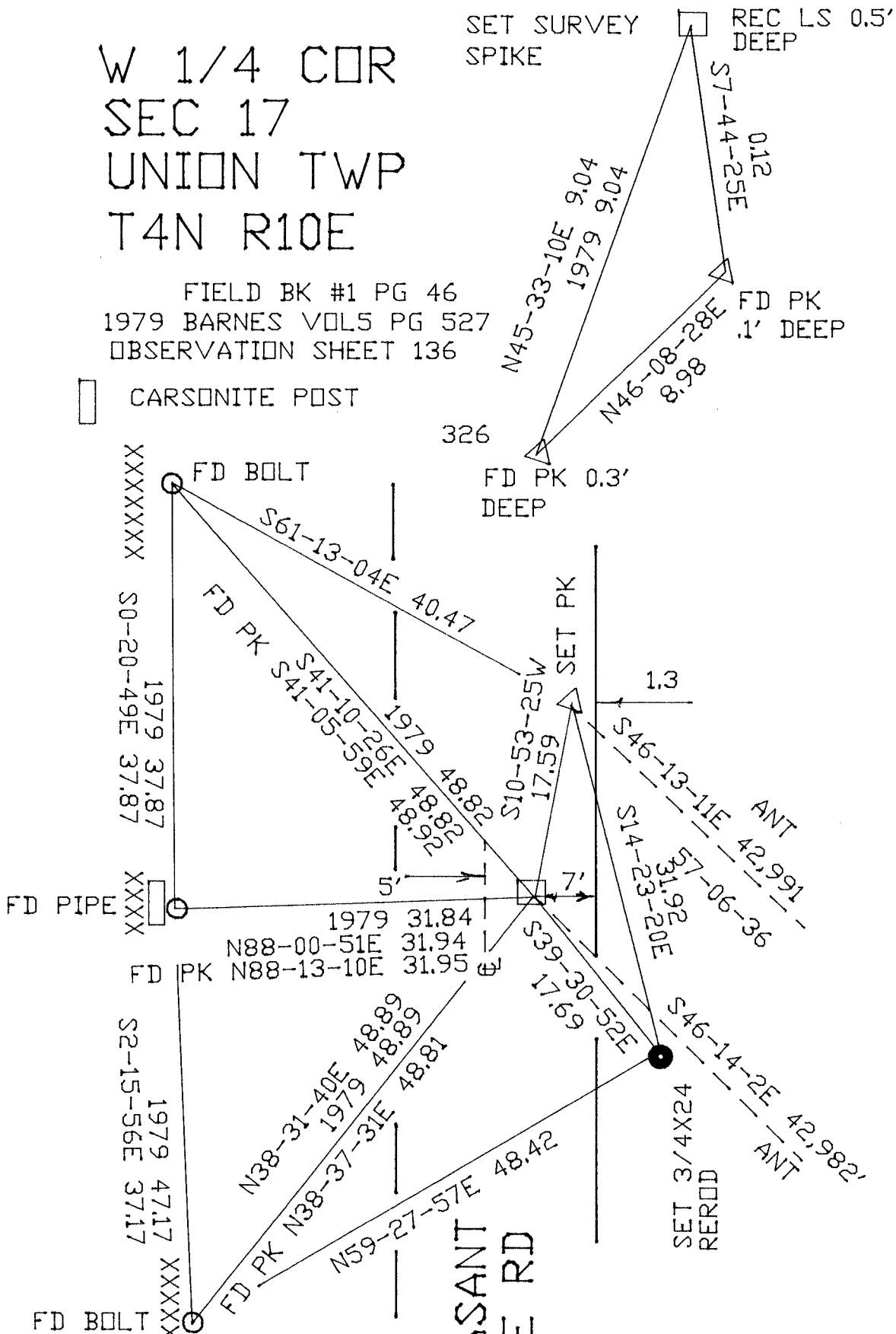
CORNER CODE L-5

A.E. 7.08 REQUIREMENT

W 1/4 COR
 SEC 17
 UNION TWP
 T4N R10E

FIELD BK #1 PG 46
 1979 BARNES VOL5 PG 527
 OBSERVATION SHEET 136

□ CARSONITE POST



Donald Barnes
 EMBOSSED SEAL
 Barnes
 Oct 20, 2011

SHEET 3 OF 3

15