

Paper weight-110# (minimum)

Black nonfading ink required

U.S. PUBLIC LAND SURVEY MONUMENT RECORD

For Public Land Survey Corners In:
T. 4 N. R. 10 E. 4th P.M.
CORNER CODE INDEX

WI ADMINISTRATIVE CODE A-E 7.08 REQUIREMENT
REV 10/23/2004 USMONREC.DWG

UNION TWP

ROCK COUNTY WI

IF AVAILABLE
ROCK COUNTY COORDINATES PREFERRED

A	1	2	3	4	5	6	7	8	9	10	11	12	13	14	15	16	17	18	19	20	21	22	23	24	25	A
B		6				5				4				3				2				1				B
C																										C
D																										D
E																										E
F																										F
G																										G
H																										H
I																										I
J																										J
K																										K
L																										L
M																										M
N																										N
O																										O
P																										P
Q																										Q
R																										R
S																										S
T																										T
U																										U
V																										V
W																										W
X																										X
Y																										Y
Z																										Z

North _____ Elev. _____

East _____

Hor. Datum _____ Vert. Datum _____

LATITUDE _____ ELLIPS. HT. _____

LONGITUDE _____

NAD83(91) _____ NETWORK ADJ. YR 2010

GPS (X) _____ TRAVERSE (X) X

BASED ON THE FOLLOWING CONTROL:

PLACE MONUMENT SYMBOL AT PROPER LOCATION ON ABOVE INDEX

CORNER MONUMENT

WITNESS MONUMENT

(a) BEARINGS ARE BASED ON: ROCK COUNTY PROJECTION

FIELD BOOK _____ PAGE # _____
OR OBSERVATION SHEET _____

SHEET 1 OF 2

SHOW A PLAN VIEW DRAWING DEPICTING THE CORNER MONUMENT AND SURROUNDING PHYSICAL FEATURES, INCLUDING THE EXCAVATION AREA AND DEPTH.

PLANNING & ZONING COMMITTEE ADOPTED THIS FORM ON 12/2/1982

CORNER CODE G-3

UN4534 GEN 7

(B) Describe any record evidence, monument evidence, occupational evidence, testimonial evidence or any other material evidence you considered, and whether the monument was found or placed.

- 1863 LOCKE VOL 1 PG 193 STATES NOTHING ABOUT MON.
2630.10 TO N & S 1/4 CORNERS, 2729.10 TO W 1/4 COR &
2632.08 TO E 1/4 COR
- 1870 RUGER VOL 2 PG 50 & #5089 SET HH 24X9X8
SURROUNDED IT WITH 4 HH. VAR 7-05 2756.16 TO STONE
MON SET BY SELF @ W 1/4 COR SEC 7, VAR 5-31 2631.75 TO
STONE MON @ N 1/4 COR SEC 7
- 1904 KERCH VOL 3 PG 21 FD HH STONE 24X9X8 SURROUNDED BY
HH STONES. 2597.60 TO MON @ E 1/4 COR SEC 7,
NORTHERLY 1319.8 TO FD HH STONE 24X9X8. PLACED
SEVERAL GAS PIPES ON 1/4 LINE BETWEEN CENTER & E 1/4
COR SEC 7
- 1912 KERCH VOL 3 PG 70 FD STONE SET BY RUGER. 2762.9 TO
MON @ W 1/4 COR SEC 7. PLACED GAS PIPE 2049.55 ON
E/W 1/4 LINE BETWEEN CENTER & W 1/4 COR SEC 7. FD COR
SET BY RUGER. SET GAS PIPE SURROUNDED BY HH @ S
1/16TH COR OF NW 1/4 SEC 7. CENTER TO S 1/16TH COR IS
1336.2
- 1982 BARNES VOL 6 PG 273 FD HH N89-52-48W 2762.33 TO
STONE
- 1982 BARNES VOL 6 PG 274 FD HH OF REC. SET CARSONITE
POST. N89-52-48W 2048.98 (KERCH 2049.55) TO FD IP,
N89-52-48W 2762.22 TO AMENDED COR @ W 1/4 COR SEC
7, & 2738.73 TO FD ALUM MON NEAR W 1/4 COR SEC 7
- 1982 COMBS CSM VOL 11 PG 26 FD STONE. USED ALUM @ W 1/4
COR SEC 7 FOR LINE.
- 1998 COMBS #8112 STONE MON. @ N 1/4 COR SEC 7 SO-13-52W
2639.06 TO STONE MON @ GEN OF SEC 4. FROM GEN OF
SEC 4 SO-13-52W 703.85 TO PIN ON NORTH R/W LINE OF
BROOKLYN EVANSVILLE RD.

FD HH OF RECORD & CARSONITE POST.

C) Was the corner restored through acceptance of (1) an obliterated evidence location, or, (2) a found perpetuated location?

FOUND PERPETUATED LOCATION AS ESTABLISHED BY RUGER.

D) Describe any material discrepancy between the location of the corner as restored or reestablished and the location of that corner as previously restored or reestablished by distance and direction. Show the discrepancy on the plan view drawing under (a), above. Show the distances between the corner as previously restored or reestablished and (1) the corner as restored or reestablished, and (2) to at least 4 of the witness monuments shown on the drawing in (a), above.

IT APPEARS LOCKE DID NOT ESTABLISH THE CENTER OF SECTION @ THE INTERSECTION OF THE 1/4 LINES. THE FD HH THAT RUGER PLACED IS 2.85' WITH IN THE N/S 1/4 LINE & 0.95 THE E/W 1/4 LINE. LOCKE DISTANCE INTIGATES HE ESTABLISHED HIS CORNER MIDWAY FROM THE N & S 1/4 CORNERS.

(E) Was the corner reestablished through lost corner proportionate methods? If so, show the method, including the directions and distances to other public land survey corners used as evidence or used for proportioning the corner location.

I, **Donald Barnes**, hereby certify that the corner location as identified by the corner code index was determined by me under my direction and control and that this U.S. Public Land Survey Monument Record is correct and complete to the best of my knowledge and belief.

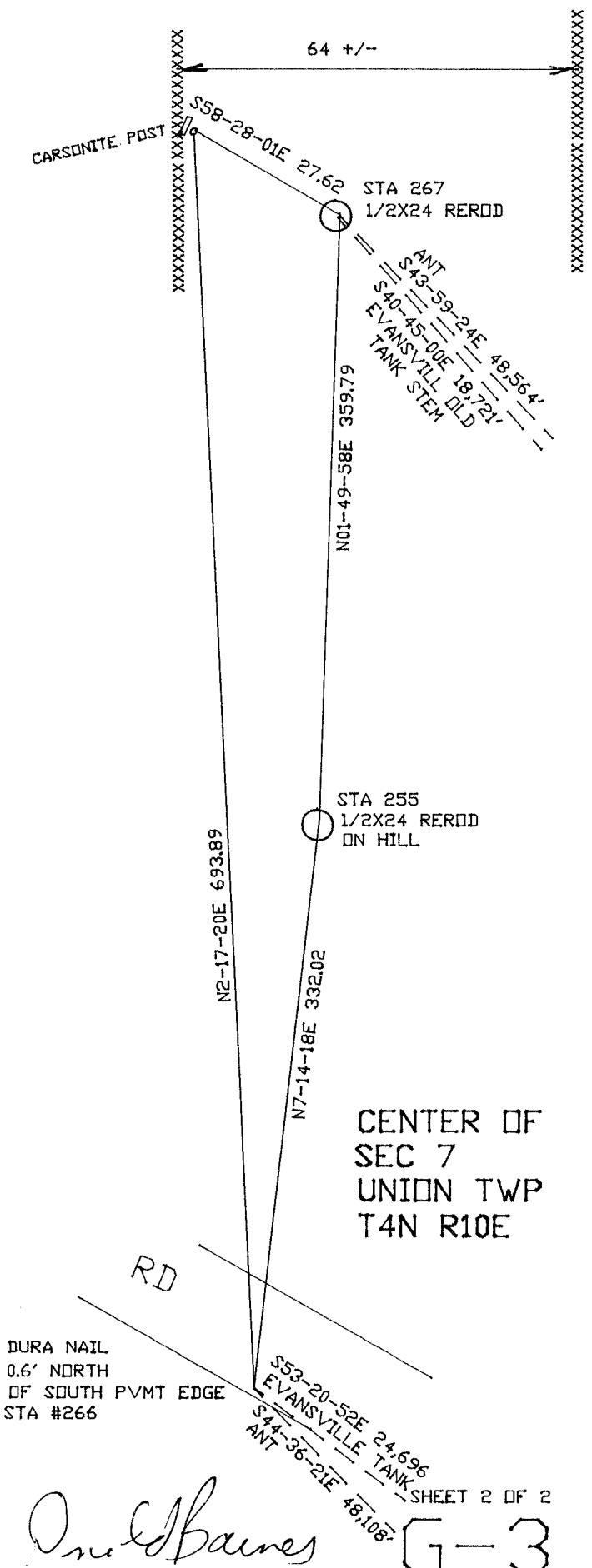
SEAL

SHEET 1 OF 2

Emboss
Donald Barnes
Aug 16, 2011

CORNER CODE G-3
A.E. 7.08 REQUIREMENT

OBERVATION
SHEET 267



SHEET 2 OF 2
G-3

Orlando Baines
Aug 16 2011