

Paper weight-110# (minimum)

Black nonfading ink required

U.S. PUBLIC LAND SURVEY MONUMENT RECORD

For Public Land Survey Corners In:
T. 4 N. R. 10 E. 4th P.M.
CORNER CODE INDEX

WI ADMINISTRATIVE CODE A-E 7.08 REQUIREMENT
REV 10/23/2004 USMONREC.DWG

UNION TWP
ROCK COUNTY WI

IF AVAILABLE
ROCK COUNTY COORDINATES PREFERRED

A	1	2	3	4	5	6	7	8	9	10	11	12	13	14	15	16	17	18	19	20	21	22	23	24	25	A	
B		6					5					4					3					2				1	B
C																											C
D																											D
E																											E
F																											F
G																											G
H																											H
I																											I
J																											J
K																											K
L																											L
M																											M
N																											N
O																											O
P																											P
Q																											Q
R																											R
S																											S
T																											T
U																											U
V																											V
W																											W
X																											X
Y																											Y
Z																											Z

North _____ Elev. _____

East _____

Hor. Datum _____ Vert. Datum _____

LATITUDE _____ ELLIPS. HT. _____

LONGITUDE _____

NAD83(91) _____ NETWORK ADJ. YR 2010

GPS (X) _____ TRAVERSE (X) X

BASED ON THE FOLLOWING CONTROL:

◆ CORNER MONUMENT

○ WITNESS MONUMENT

BEARINGS ARE BASED ON: --- ROCK COUNTY PROJECTION ---

FIELD BOOK _____ PAGE # _____
OR OBSERVATION SHEET _____

SHEET 1 OF 3

SHOW A PLAN VIEW DRAWING DEPICTING THE CORNER MONUMENT AND SURROUNDING PHYSICAL FEATURES, INCLUDING THE EXCAVATION AREA AND DEPTH.

PLANNING & ZONING COMMITTEE ADOPTED THIS FORM ON 12/2/1982

CORNER CODE 6-1

UN534 W1/4CORSEC7

(B) Describe any record evidence, monument evidence, occupational evidence, testimonial evidence or any other material evidence you considered, and whether the monument was found or placed.

1833 BRINK PG 44 EAST BOUNDARY T4N R9E NORTH ON EAST SIDE OF SECTION 13

2640.00 SET 1/4 SECTION POST IN PRAIRIE MADE A MOUND

2937.00 ROAD FROM MINERAL POINT TO KOSCONONG E&W

4620.00 LEAVE PRAIRIE

5280.00 SET POST FOR CORNER TO SECTIONS 12 & 13 BUR OAK 24 S17E 80.52'; BUR OAK 12 N43E 89.76' LAND ROLLING RICH DRY PRAIRIE. NORTH OF PRAIRIE THINLY TIMBERED WITH BURR OAK NEEDLE ATTRACTED 1-40 WEST

1863 LOCKE VOL 1 PG 193 & 5090 FD STONE ON CORNER. USED TO SUBDIVIDE SEC 7. 2729.1 TO CENTER OF SEC 7 & 5361.18 TO E 1/4 COR SEC 7

1870 RUGER AUG REMON-122 NORTH ON WEST LINE OF SW 1/4 SEC 7 ON A VAR 5-05; AT

2640.00 INTERSECTED QUARTER LINE AT QUARTER CORNER. FOUND STONE AT CORNER AND OLD STAKE UNDER STONE.

NORTH ON WEST LINE OF NW 1/4 SEC 7 ON A VAR 4-55; AT

2630.76 INTERSECTED NORTH BOUNDARY LINE AT CORNER FOUND STONE AT CORNER AND OLD STAKE UNDER STONE. ALSO FOUND STUMPS OF BEARING TREES.

1870 RUGER VOL 2 PG 50 STONE MON SET BY SELF VAR 4-55 2629.44 TO STONE MON @ NW COR SEC 7, VAR 7-05 2756.16 TO HH 24X9X8 SURROUNDED BY 4 HH @ CENTER OF SEC 7

1912 KERCH VOL 3 PG 70 MON PLACED BY HH 2762.9 TO FD STONE SET BY RUGER @ CENTER OF SEC 7. EASTERLY 713.35 TO SET GAS PIPE; THENCE EASTERLY 713.35 TO FD COR BY RUGER-SET GAS PIPE

1977 TALARCZYK #5091 E 1/4 COR SEC 13 T4N R9E CAST ALUM MON & REFERENCED COR. CORNER SET IN PLACE OF STONE FOUND. @ KING RD & CTH T

1977 BARNES VOL 5 PG 366 SET ON LINE WITH E 1/4 SEC 13 (GREEN CO.) & THE NE COR SEC 13 @ SINGLE PROPORTIONATE DIS. SET ALUM MON. REFERENCED SAME. 1' SOUTH OF E/W FENCE LINE ON EAST SIDE OF RD. W 1/16TH COR OF NW 1/4 SEC 7 DUG & FD 4' DEEP ASPHALT RD. DUG 3' MORE & FD NOTHING.

1977 BARNES VOL 5 PG 369 2646.63 TO SW COR SEC 7, 2637.37 TO NW COR SEC 7, & 894.36 NORTHERLY FROM E 1/4 COR SEC 13 COR

1982 BARNES VOL 6 PG 273 ALUM MON. REC DISTANCES. FD IP @ S 1/16TH COR OF NW 1/4 SEC 7, COMBS ALUM NEAR W 1/4 COR SEC 7 N2-10-50E 2637.42 TO ALUM NEAR NW COR SEC 7. ALUM IS 23.24 EASTERLY OF PIPE. FD HH @ CENTER OF SEC 7. S89-52-48E 2048.98 FROM IP @ S 1/16TH COR OF NW 1/4 SEC 7 TO CENTER OF SEC 7.

1982 BARNES VOL6 PG 274 DUG & FD NOTHING. AT AMENDED COR. SET BERNTSEN W-1-C POLYSTYRENE 2' DEEP IN CENTER OF DITCH. SET PART OF CI MON. NEXT TO W-1-C 23.24 TO FD ALUM MON. FROM AMENDED MON TO FD IP IS S89-52-48E 713.15 (KERCH 713.35). FROM AMENDED MON TO HH @ CENTER OF SEC 7 IS N89-52-48W ? 2762.13.

SEAL
Emboss

Donald Barnes
Aug 16, 2011

SHEET 1 OF 3

CORNER CODE G-1

UN534 W1/4CORSEC7

1982 COMBS CSM VOL 11 PG 26 ALUM. USED STONE @ CENTER
OF SEC 7 FOR LINE.
1992 COMBS CSM VOL 16 PG 164 POLY MON. 2647.08 TO ALUM @
SW COR SEC 7
2004 CARROLL CSM VOL 28 PG 22 FD ALUM. 2637.12 TO ALUM @
NW COR SEC 7

FD REFERENCE MONUMENTS & POLY MON IN CENTER OF DITCH ON
WEST SIDE OF RD.

C) Was the corner restored through acceptance of (1) an obliterated evidence location, or, (2) a found perpetuated location?

ACCEPTED FD POLY. MON.

D) Describe any material discrepancy between the location of the corner as restored or reestablished and the location of that corner as previously restored or reestablished by distance and direction. Show the discrepancy on the plan view drawing under (a), above. Show the distances between the corner as previously restored or reestablished and (1) the corner as restored or reestablished, and (2) to at least 4 of the witness monuments shown on the drawing in (a), above.

IN 1977 (VOL 5 PG 366) I SET AN ALUM. AS STATED ABOVE. IN
1982 (VOL 6 PG 274) I SET A POLY MON BASED ON KERCH'S
MONUMENTS THAT I FOUND ON THE E/W 1/4 LINE.

(E) Was the corner reestablished through lost corner proportionate methods? If so, show the method, including the directions and distances to other public land survey corners used as evidence or used for proportioning the corner location.

I, **Donald Barnes**, hereby certify that the corner location as identified by the corner code index was determined by me under my direction and control and that this U.S. Public Land Survey Monument Record is correct and complete to the best of my knowledge and belief.

Donald
SEAL
Barnes
Emboss

SHEET 2 OF 3

Aug 16, 2011

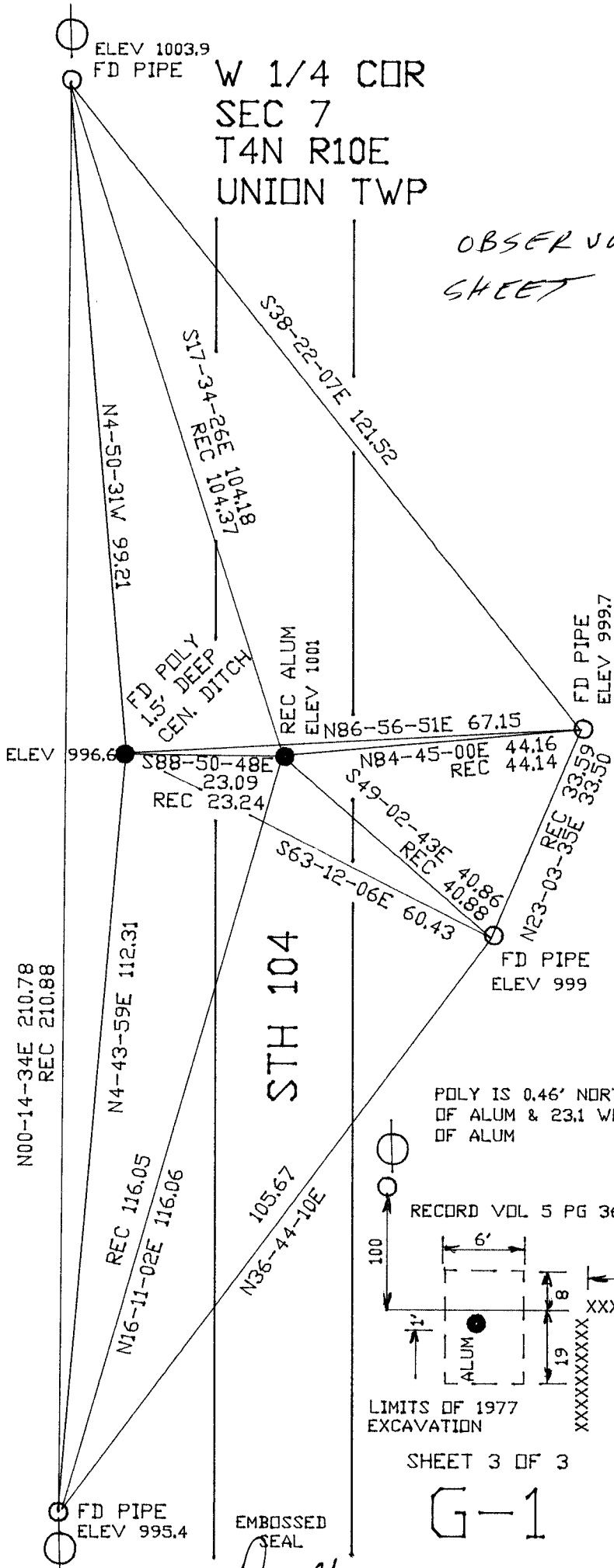
CORNER CODE G-1

A.E. 7.08 REQUIREMENT

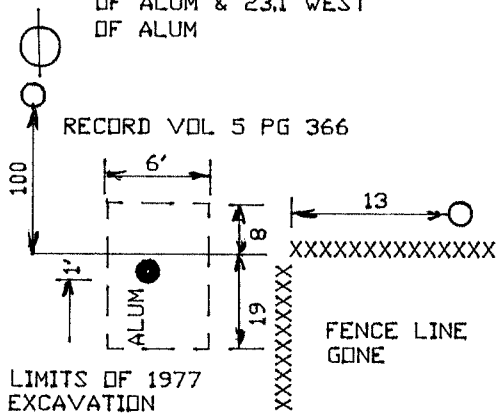
ELEV 1003.9
FD PIPE

W 1/4 COR
SEC 7
T4N R10E
UNION TWP

OBSERVATION
SHEET 892897



POLY IS 0.46' NORTH
OF ALUM & 23.1 WEST
OF ALUM



LIMITS OF 1977
EXCAVATION

SHEET 3 OF 3

G-1

EMBOSSED
SEAL

*Donald
Baimes
Aug 16, 2011*