

Paper weight-110# (minimum)

Black nonfading ink required

# U.S. PUBLIC LAND SURVEY MONUMENT RECORD

For Public Land Survey Corners In:  
T. 4 N. R. 10 E. 4th P.M.  
CORNER CODE INDEX

WI ADMINISTRATIVE CODE A-E 7.08 REQUIREMENT  
REV 10/23/2004 USMONREC.DWG

UNION TWP  
ROCK COUNTY WI

IF AVAILABLE  
ROCK COUNTY COORDINATES PREFERRED

A	1	2	3	4	5	6	7	8	9	10	11	12	13	14	15	16	17	18	19	20	21	22	23	24	25	A
B																										B
C	6					5					4				3					2				1		C
D																										D
E																										E
F	7					8					9				10					11				12		F
G																										G
H																										H
I																										I
J																										J
K	18					17					16				15					14				13		K
L																										L
M																										M
N																										N
O	19					20					21				22					23				24		O
P																										P
Q																										Q
R																										R
S	30					29					28				27					26				25		S
T																										T
U																										U
V																										V
W	31					32					33				34					35				36		W
X																										X
Y																										Y
Z																										Z

North \_\_\_\_\_ Elev. \_\_\_\_\_

East \_\_\_\_\_

Hor. Datum \_\_\_\_\_ Vert. Datum \_\_\_\_\_

LATITUDE \_\_\_\_\_ ELLIPS. HT. \_\_\_\_\_

LONGITUDE \_\_\_\_\_

NAD83(91) \_\_\_\_\_ NETWORK ADJ. YR 2010

GPS (X) \_\_\_\_\_ TRAVERSE (X) X

BASED ON THE FOLLOWING CONTROL:

PLACE MONUMENT SYMBOL  AT PROPER LOCATION ON ABOVE INDEX

CORNER MONUMENT       WITNESS MONUMENT

BEARINGS ARE BASED ON: ROCK COUNTY PROJECTION

FIELD BOOK \_\_\_\_\_ PAGE # \_\_\_\_\_  
OR OBSERVATION SHEET \_\_\_\_\_

SHEET 1 OF 3

SHOW A PLAN VIEW DRAWING DEPICTING THE CORNER MONUMENT AND SURROUNDING PHYSICAL FEATURES, INCLUDING THE EXCAVATION AREA AND DEPTH.

PLANNING & ZONING COMMITTEE ADOPTED THIS FORM ON 12/2/1982

CORNER CODE C-1

UN514 W1/4CORSEC6

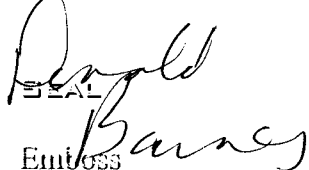
(B) Describe any record evidence, monument evidence, occupational evidence, testimonial evidence or any other material evidence you considered, and whether the monument was found or placed.

- 1833 BRINK (SEP 15TH) PG 46 EAST BOUNDARY T4N R9E  
NORTH ON EAST SIDE OF SECTION 12  
1204.50 BUR OAK 18  
2112.00 ENTER MARSH NE  
2640.00 SET 1/4 SECTION POST BUR OAK 12 S1 1/2E  
570.24' NO OTHER  
4884 LEAVE MARSH  
5280.00 SET POST FOR CORNER TO SECTIONS 1 & 12  
BUR OAK 16 N6W; BUR OAK 16 S28W 116.16'  
FIRST 1/2 LAND ROLLING SECOND RATE BUR  
OAK, HAZEL, RED ROOT & C. MARSH WET ?  
WILLOW  
SEP 15TH 1833
- 1856 CHURCH VOL 1 PG 83 STAKE IN THE MARSH. VAR 5-30  
2661.12 TO NW COR SEC 6, VAR 5-30 5280.00 TO SW COR  
SEC 6, 2752.20 TO CENTER OF SEC 6, 5392.20 TO E 1/4  
COR SEC 6, & VAR 5-30 1704.12 TO NE COR SEC 12 T4N  
R9E.
- 1870 RUGER AUG REMON-124 SOUTH ON WEST LINE OF NW  
1/4 SEC 6 ON A VAR 5-05; AT  
2636.04 INTERSECTED QUARTER LINE 5.28' WEST OF  
QUARTER CORNER. FOUND OLD STAKE AT  
CORNER. COR VAR 5-12  
SOUTH ON WEST LINE OF SW 1/4 SEC 6 ON A  
VAR 4-55; AT  
2660.46 INTERSECTED SOUTH BOUNDARY LINE AT  
CORNER.
- 1977 TALARCZYCK TIE SHEET #7003 E 1/4 COR SEC 12 T4N R9E  
CAST ALUM. MON. REFERENCED SAME. 8.7' WEST OF EAST  
PVMT EDGE. CORNER SET BY PROPORTIONATE  
MEASUREMENT & EXISTING PHYSICAL EVIDENCE.
- 1977 BARNES VOL 5 PG 365 FD CUT LIMESONE 30' DEEP. TOP  
BROKE OFF. REFERENCED SAME. ON LINE WITH E/W FENCE  
LINE TO THE EAST. PKS 10.00 TO THE SE & SW. W 1/16  
COR OF NW 1/4 SEC 6 DUG & FD NOTHING. SET ALUM  
MON.
- 1977 BARNES VOL 5 PG 369 STATES NOTHING ABOUT MON.  
EDM 2640.94 TO NW COR SEC 6, EDM 2667.14 TO SW COR  
SEC 6, & 928.16 TO E 1/4 COR SEC 12, WHICH IS SOUTH  
OF W 1/4 COR SEC 6. ANGLE 179-47-49 @ W1/4 COR SEC  
6 FROM NW COR SEC 6 TO SW COR SEC 6
- 1978 BARNES VOL 5 PG 398 FD PK AS PREVIOUSLY SET. SET  
ALUM. MON.

FD AUM. MON. 0.4' DEEP & 4 REFERENCE PIPES.

C) Was the corner restored through acceptance of (1) an obliterated evidence location, or, (2) a found perpetuated location?

ACCEPTED FD ALUM. MON. IT PERPETUATES THE ORIG GOV STAKE.

  
SEAL  
Embloss

SHEET 1 OF 3

May 27 2011

CORNER CODE C-1

UN514

*D) Describe any material discrepancy between the location of the corner as restored or reestablished and the location of that corner as previously restored or reestablished by distance and direction. Show the discrepancy on the plan view drawing under (a), above. Show the distances between the corner as previously restored or reestablished and (1) the corner as restored or reestablished, and (2) to at least 4 of the witness monuments shown on the drawing in (a), above.*

NONE

*(E) Was the corner reestablished through lost corner proportionate methods? If so, show the method, including the directions and distances to other public land survey corners used as evidence or used for proportioning the corner location.*

NO

I, **Donald Barnes**, hereby certify that the corner location as identified by the corner code index was determined by me under my direction and control and that this U.S. Public Land Survey Monument Record is correct and complete to the best of my knowledge and belief.

  
Donald Barnes  
Emboss

SHEET 2 OF 3

May 23, 2011

CORNER CODE C-1

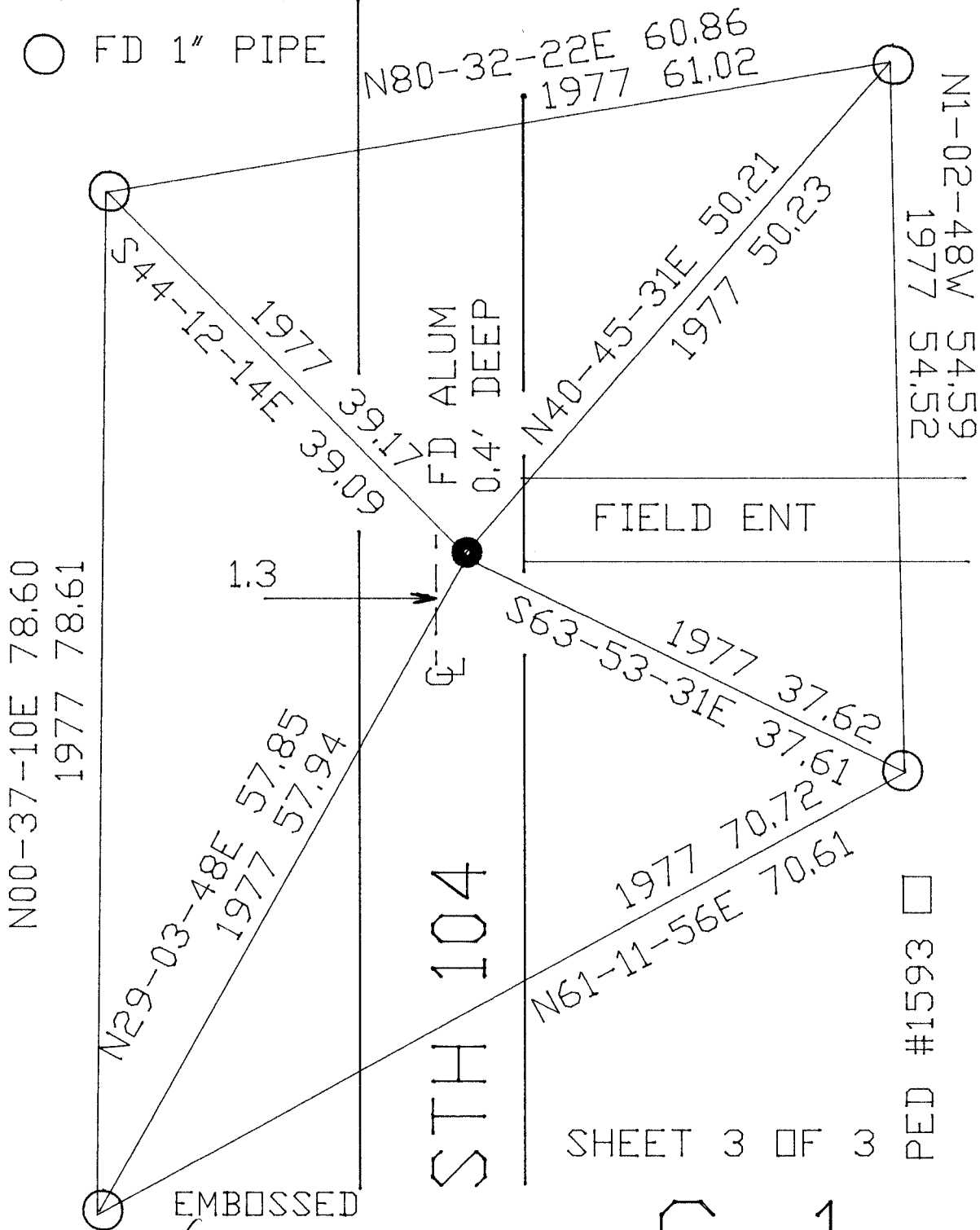
A.E. 7.08 REQUIREMENT

W 1/4 COR  
SEC 6  
T4N R10E  
UNION TWP

1977 BARNES VOL 5 PG 365

OBSERVATION #8

○ FD 1" PIPE



□ 8651# CED

SHEET 3 OF 3

C-1

EMBOSSSED  
SEAL  
*Donnell Barnes*  
May 27, 2011