

U.S. PUBLIC LAND SURVEY MONUMENT RECORD

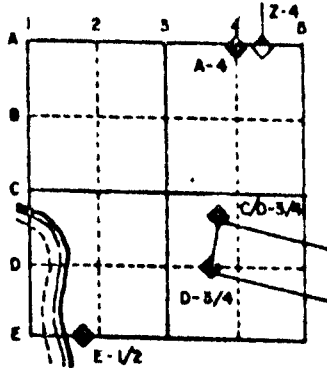
For Public Land Survey Corners in the
T. 2 N., R. 12 E.

CORNER CODE INDEX

1	2	3	4	5	6	7	8	9	10	11	12	13	14	15	16	17	18	19	20	21	22	23	24	25
A																								
B																								
C																								
D																								
E																								
F																								
G																								
H																								
I																								
J																								
K																								
L																								
M																								
N																								
O																								
P																								
Q																								
R																								
S																								
T																								
U																								
V																								
W																								
X																								
Y																								
Z																								

PLACE MONUMENT SYMBOL (◆) AT PROPER LOCATION ON ABOVE INDEX

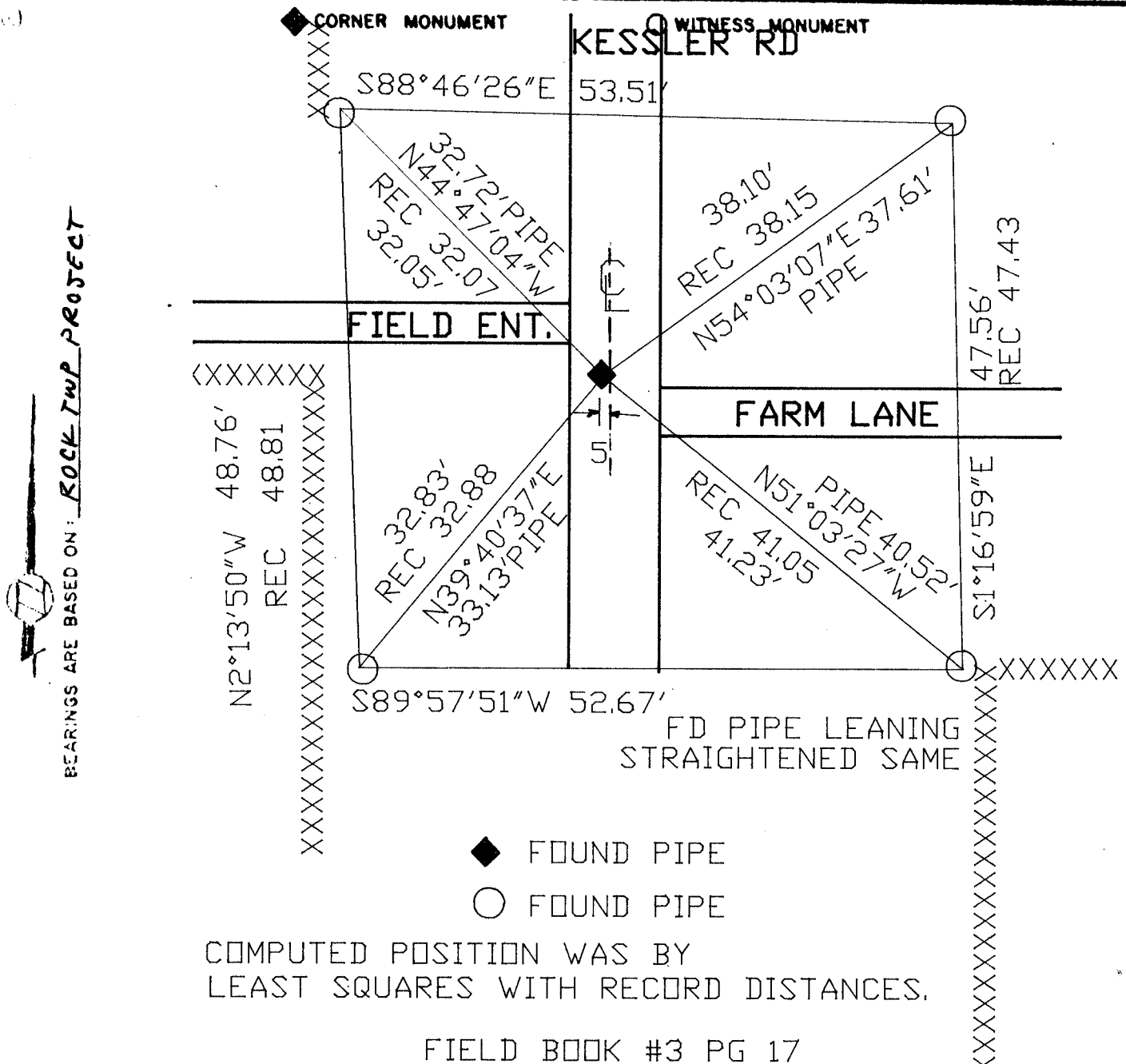
EXAMPLE



ROCK _____ TWP
ROCK COUNTY WI

IF AVAILABLE STATE PLANE COORDINATES

North (Y) _____ Elev. (Z) _____
 East (X) _____ Zone _____
 Hor. Datum _____ Vert. Datum _____



- ◆ FOUND PIPE
- FOUND PIPE

COMPUTED POSITION WAS BY
LEAST SQUARES WITH RECORD DISTANCES.

FIELD BOOK #3 PG 17

MICROFILMED

SHEET _____ OF _____

CORNER CODE: C3

(B) Describe any record evidence, monument evidence, occupational evidence, testimonial evidence or any other material evidence you considered, and whether the monument was found or placed.

1854 McVEAN VOL 1 PG 23 BR O. 10 S89 1/2 2.45, BR O. 9 N24 1/2 E 2.37. SHOWS A DISTANCE OF 2698.74 TO N 1/4 AND 2616.57 TO S 1/4 CORNER OF SECTION 6.

1866 LOCKE VOL 1 PG 265 SET STAKE SURROUNDED BY 2 LIMESTONES AND 1 HARD HEAD. SHOWS THE FOLLOWING DISTANCES IN SECTION 6:
TO W 1/4 2650.56
E 1/4 2656.17
S 1/4 2647.76
N 1/4 2692.31

1974 LEE VOL 5 PG 53 PLACED CENTER OF SECTION BY PRORATION BETWEEN FENCE JUNCTIONS AT E/W 1/4 CORNERS. DOES NOT STATE THE TYPE OF MONUMENT THAT WAS PLACED.
SHOWS THE FOLLOWING DISTANCES IN SECTION 6:
TO W 1/4 2651.43
E 1/4 2656.85
S 1/4 2657.40

1975 SCHROEDER VOL 5 PG 111 STATES THAT CENTER WAS SET BY PRORATION BETWEEN E 1/4 CORNER AND W 1/4 CORNER AND USING LOCKE'S MEASUREMENTS ON THE E & W CENTER LINE. SHOWS THE FOLLOWING DISTANCES IN SECTION 6:
TO W 1/4 2650.92
E 1/4 2656.33

DUG 8' DEEP AND FOUND NOTHING.

C) Was the corner restored through acceptance of (1) an obliterated evidence location, or, (2) a found perpetuated location?

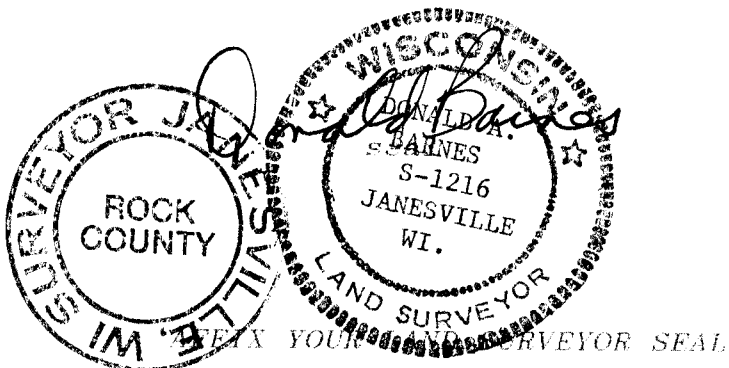
SCHROEDER AND LEE'S POSITION ARE DIFFERENT. THEY ARE IN HARMONY WITH McVEANS PRORATED DISTANCE TO THE N AND S 1/4 CORNERS AND LOCKE'S PRORATED DISTANCES TO THE W AND E 1/4 CORNERS.

D) Describe any material discrepancy between the location of the corner as restored or reestablished and the location of that corner as previously restored or reestablished by distance and direction. Show the discrepancy on the plan view drawing under (a), above. Show the distances between the corner as previously restored or reestablished and (1) the corner as restored or reestablished, and (2) to at least 4 of the witness monuments shown on the drawing in (a), above.

LEE ESTABLISHED THE CENTER OF SECTION IN 1974 AND SCHROEDER ESTABLISHED IN 1975. THESE TWO POSITIONS ARE DIFFERENT AS SHOWN ON THE MAP.

(E) Was the corner reestablished through lost corner proportionate methods? If so, show the method, including the directions and distances to other public land survey corners used as evidence or used for proportioning the corner location.

I, Donald Barnes, hereby certify that the corner points as identified by the corner code index were, in a field survey on, October 3, 1990, established, re-established, monumented, re-monumented, recovered or restored as expressed below and in conformance with the regulations and rules as required in the current manual of survey instructions of the United States Department of Interior, Bureau of Land Management.



COUNTY SURVEYOR FILING DATA

Date of computer entry _____

Date microfilmed _____

Number of included sheets _____
CORNER CODE

C3