

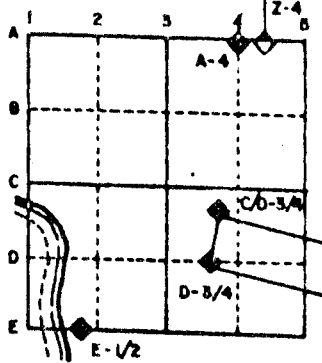
# U.S. PUBLIC LAND SURVEY MONUMENT RECORD

For Public Land Survey Corners in the  
T. 2 N., R. 12 E.

## CORNER CODE INDEX

	1	2	3	4	5	6	7	8	9	10	11	12	13	14	15	16	17	18	19	20	21	22	23	24	25
A	1	2	3	4	5	6	7	8	9	10	11	12	13	14	15	16	17	18	19	20	21	22	23	24	25
B																									
C	6	5	4	3	2																				
D																									
E																									
F																									
G	7	8	9	10	11	12																			
H																									
I																									
J																									
K																									
L	18	17	16	15	14	13																			
M																									
N																									
O																									
P	19	20	21	22	23	24																			
Q																									
R																									
S																									
T	30	29	28	27	26	25																			
U																									
V																									
W																									
X	31	32	33	34	35	36																			
Y																									
Z																									

### EXAMPLE



ROCK TWP  
ROCK COUNTY WI

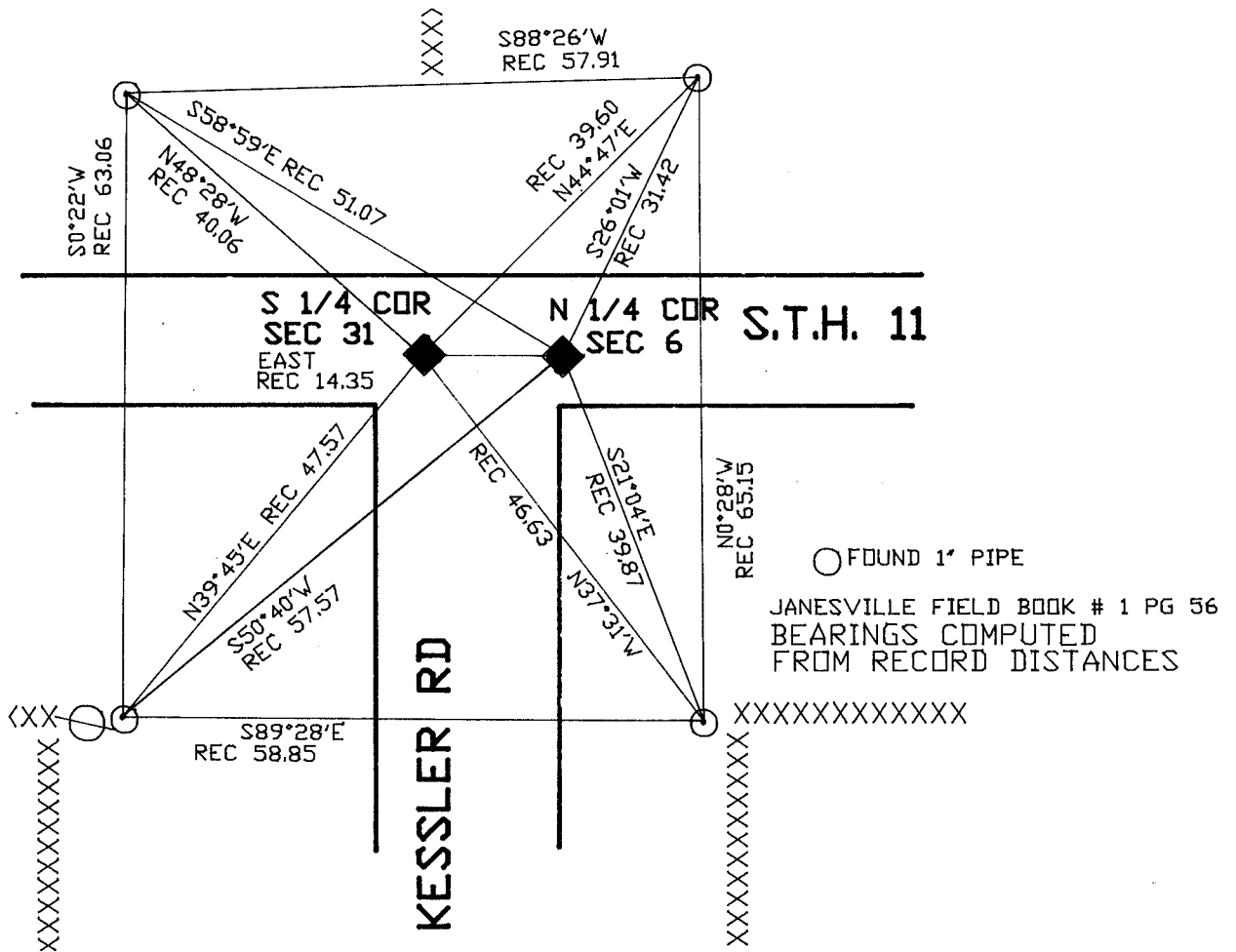
IF AVAILABLE  
STATE PLANE COORDINATES

North (Y) 246,153.40 Elev. (Z) \_\_\_\_\_  
 East (X) 2,236,553.00 Zone \_\_\_\_\_  
 Hor. Datum \_\_\_\_\_ Vert. Datum \_\_\_\_\_

PLACE MONUMENT SYMBOL (◆) AT PROPER LOCATION ON ABOVE INDEX  
 WPL 246,152.39  
 2,236,554.33

◆ CORNER MONUMENT      ○ WITNESS MONUMENT

BEARINGS ARE BASED ON: Assumed



MICROFILMED

SHEET \_\_\_ OF \_\_\_

CORNER CODE: A 3

(B) Describe any record evidence, monument evidence, occupational evidence, testimonial evidence or any other material evidence you considered, and whether the monument was found or placed.

- 1833 HARRISON ORIGINAL GOVERNMENT SURVEYOR. S 1/4 CORNER OF SECTION 31 JANESVILLE TOWNSHIP. SET QUARTER SECTION POST. BUR OAK 8 N89E 110.22', BUR OAK 10 N 12 1/2 W 182.82. SHOWS 2600.4' TO THE NW CORNER OF SECTION 6 AND 2640 TO THE SE CORNER OF SECTION 31 JANESVILLE TOWNSHIP.
- 1854 Mc VEAN VOL 1 PG 23. SHOWS 2698.74 TO CENTER OF SECTION 6 AND 5315.31' TO SOUTH QUARTER CORNER OF SECTION 6.
- 1866 LOCKE FOUND CORNER AS SET BY RUGER AND EAST B.T. RESET STAKE (STAKE SURROUNDED 3 HH) SHOWS 2692.31' TO CENTER OF SECTION 6 AND 5340.06 TO SOUTH QUARTER CORNER OF SECTION 6.
- 1870 RUGER VOL 2 PG 43 SET LIMESTONE 20X11X9 14.36 EAST OF SOUTH QUARTER CORNER OF SECTION 31 JANESVILLE TOWNSHIP. AT SOUTH QUARTER CORNER OF SECTION 31 FOUND CORNER ESTABLISHED BY SELF. SHOWS FROM THE NORTH QUARTER CORNER OF SECTION 6 2629.04 (VAR 6-42) TO THE NW CORNER OF SECTION 6 AND 2652.13 (VAR 6-45) TO THE NE CORNER OF SECTION 6.
- 1933 SUNNY VOL 3 PG 234 SET 1"X36" PIPE IN CONCRETE PAVEMENT 3.8' NORTH OF CENTER OF PAVEMENT. CORNER IS 14.35' EAST OF SOUTH QUARTER CORNER OF SECTION 31 JANESVILLE TOWNSHIP. SHOWS 2629.45 TO NW CORNER OF SECTION 6.
- 1970 BATTERMAN JR. VOL 4 PG 432 FOUND 1" PIPE AT NORTH QUARTER CORNER OF SECTION 6. PIN AT SOUTH QUARTER CORNER OF SECTION 31 AND IS 14.35' WEST OF NORTH QUARTER CORNER. REFERENCED SAME. SHOWS WPL COORDINATES OF N/S 246,152.39;E/W 2,236,554.33
- 1970 D.O.T Z3 FOUND 3/4 " IRON PIN 3.8' NORTH OF CENTER LINE OF PAVEMENT AND EAST OF SOUTH QUARTER CORNER OF SECTION 31.
- 1987 BARNES Z3 (1) FOUND ALL REFERENCE PIPES AS SHOWN IN VOLUME 4 PG 432.  
FOUND PIPE.

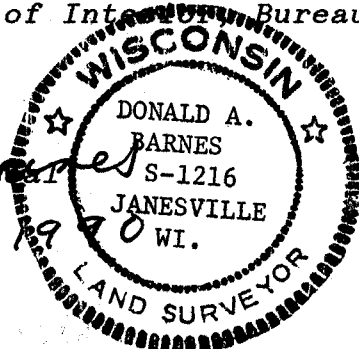
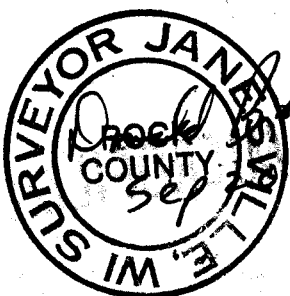
C) Was the corner restored through acceptance of (1) an obliterated evidence location, or, (2) a found perpetuated location?

ACCEPTED FOUND PIPE.

D) Describe any material discrepancy between the location of the corner as restored or reestablished and the location of that corner as previously restored or reestablished by distance and direction. Show the discrepancy on the plan view drawing under (a), above. Show the distances between the corner as previously restored or reestablished and (1) the corner as restored or reestablished, and (2) to at least 4 of the witness monuments shown on the drawing in (a), above.

(E) Was the corner reestablished through lost corner proportionate methods? If so, show the method, including the directions and distances to other public land survey corners used as evidence or used for proportioning the corner location.  
NO

I, Donald Barnes, hereby certify that the corner points as identified by the corner code index were, in a field survey on, July 31, 1980, established, re-established, monumented, re-monumented, recovered or restored as expressed below and in conformance with the regulations and rules as required in the current manual of survey instructions of the United States Department of Interior, Bureau of Land Management.



COUNTY SURVEYOR FILING DATA

Date of computer entry \_\_\_\_\_

Date microfilmed \_\_\_\_\_

Number of included sheets \_\_\_\_\_ A 3