

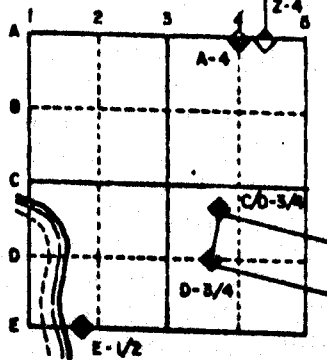
U.S. PUBLIC LAND SURVEY MONUMENT RECORD

For Public Land Survey Corners in the
T. 2 N., R. 12 E.

CORNER CODE INDEX

	1	2	3	4	5	6	7	8	9	10	11	12	13	14	15	16	17	18	19	20	21	22	23	24	25
A																									
B																									
C	6																								
D		5																							
E			4																						
F				3																					
G					2																				
H	7																								
I		6																							
J			5																						
K				4																					
L					3																				
M						2																			
N							1																		
O																									
P	19																								
Q		20																							
R			21																						
S				22																					
T					23																				
U						24																			
V							25																		
W	30																								
X		29																							
Y			28																						
Z				27																					
					26																				
						25																			
							24																		
								23																	
									22																
										21															
											20														
												19													
													18												
														17											
															16										
																15									
																	14								
																		13							
																			12						
																				11					
																					10				
																						9			
																							8		
																								7	
																									6
																									5
																									4
																									3
																									2
																									1

EXAMPLE



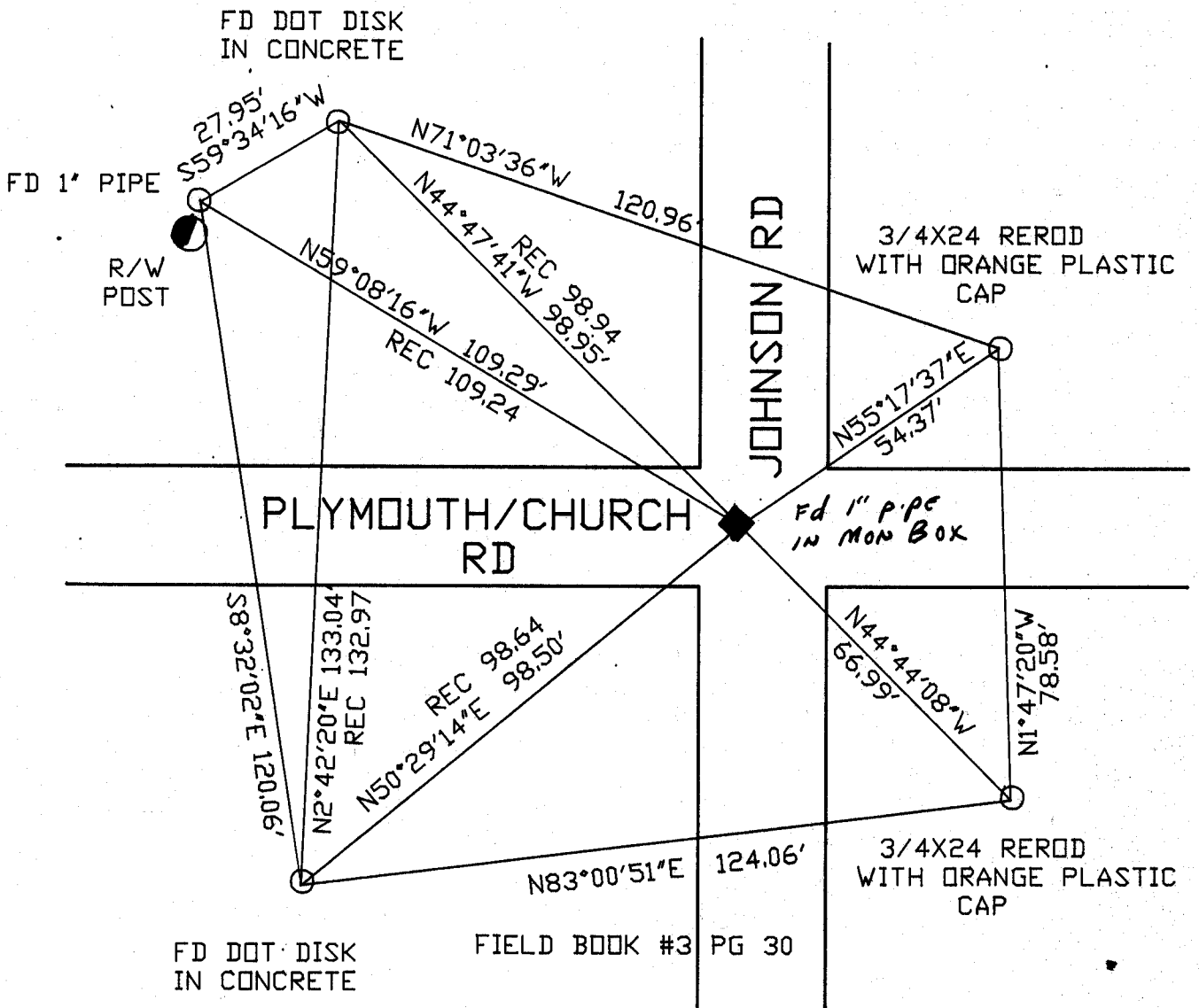
ROCK TWP
ROCK COUNTY WI

IF AVAILABLE
STATE PLANE COORDINATES

NAD _____
 27 North (Y) 219,604.52 Elev. (Z) _____
 East (X) 2,234,412.88 Zone _____
 Hor. Datum _____ Vert. Datum _____
 WPL 219,604.05
2,234,410.54

PLACE MONUMENT SYMBOL (◆) AT PROPER LOCATION ON ABOVE INDEX

c.) ◆ CORNER MONUMENT ○ WITNESS MONUMENT



BEARINGS ARE BASED ON: TWP PROJ.

MICROFILMED

SHEET ___ OF ___

CORNER CODE: V /

(B) Describe any record evidence, monument evidence, occupational evidence, testimonial evidence or any other material evidence you considered, and whether the monument was found or placed.

- 1833 MULLETT ORIGINAL GOVERNMENT SURVEYOR. NORTH ON EAST SIDE SECTION 36. SET POST CORNERS SECTION 25 & 36 WHITE OAK 12 N59W 3.45, WHITE OAK 18 S70W 3.63.
- 1834 HARRISON ORIGINAL GOVERNMENT SURVEYOR. WEST BETWEEN 30 & 31. INT. W. BDY 15.84'S OF P. LAND ROLLING 2ND RATE WITH W.O AND RED O. TIMBER.
- 1852 McVEAN VOL 1 PG 14 STATES NOTHING ABOUT CORNER. SHOWS A DISTANCE OF 2655.18 TO N 1/4 CORNER AND 2642.64 TO E 1/4 CORNER OF SECTION 36 PLYMOUTH TOWNSHIP.
- 1868 LOCKE PLYMOUTH TOWNSHIP REMONUMENTATION FIELD NOTES. SOUTH ON EAST SIDE OF SECTION 25. INTERSECTED SOUTH BOUNDARY AT CORNER. FOUND STONE (SET BY CHURCH) AND WHERE BTs WERE DUG OUT. CORNER IN CENTER OF HIGHWAY. PLACED CUT LIMESTONE.
- 1870 RUGER VOL 2 PG 46 FOUND STONE SET BY LOCKE.
- 1874 RUGER VOL 2 PG 127 FOUND STONE MONUMENT.
- 1965 BATTERMAN VOL 4 PG 222 FOUND CUT STONE MONUMENT (SEE CORNER SECTION 25 PLYMOUTH TWP). REFERENCED SAME.
- 1966 BATTERMAN VOL 4 PG 260 REFERENCED SE CORNER SECTION 25 PLYMOUTH TOWNSHIP.
- 1966 BATTERMAN VOL 4 PG 285 CORNER REFERENCED WITH STATE MONUMENTS. THE REFERENCE MONUMENTS ARE BRASS DISKS IN 8" CONCRETE.
- 1972 LEE VOL 4 PG 577 SHOWS WPL COORDINATES OF N/S 219,604.05; E/W 2,234,410.54
- 1981 BARNES VOL 6 PG 144 SHOWS A BEARING AND DISTANCE FROM NW TO W 1/4 OF SECTION 31 AS N1-37-56W 2658.55, NW TO N 1/4 OF SECTION 31 AS N89-47-31E 2698.41, AND NW TO W1/4 OF SECTION 30 AS N1-22 -22W 2647.21.

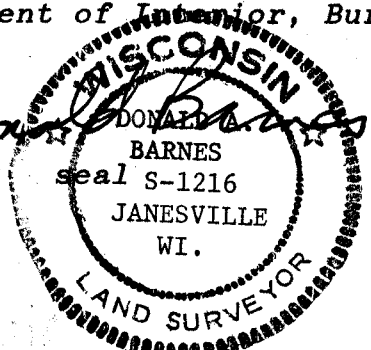
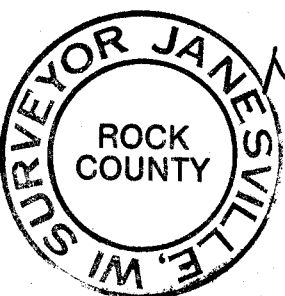
FOUND 1" PIPE IN MONUMENT BOX.

C) Was the corner restored through acceptance of (1) an obliterated evidence location, or, (2) a found perpetuated location?

ACCEPTED FOUND MONUMENT BOX.

D) Describe any material discrepancy between the location of the corner as restored or reestablished and the location of that corner as previously restored or reestablished by distance and direction. Show the discrepancy on the plan view drawing under (a), above. Show the distances between the corner as previously restored or reestablished and (1) the corner as restored or reestablished, and (2) to at least 4 of the witness monuments shown on the drawing in (a), above.

I, Donald Barnes, hereby certify that the corner points as identified by the corner code index were, in a field survey on, August 17, 1989, established, re-established, monumented, re-monumented, recovered or restored as expressed below and in conformance with the regulations and rules as required in the current manual of survey instructions of the United States Department of Interior, Bureau of Land Management.



COUNTY SURVEYOR FILING DATA

Date of computer entry _____

Date microfilmed _____

Number of included sheets _____

CORNER CODE

AFFIX YOUR LAND SURVEYOR SEAL

V /