

U.S. PUBLIC LAND SURVEY MONUMENT RECORD

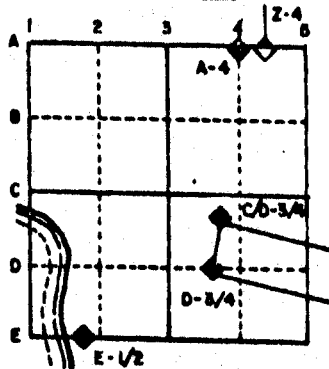
For Public Land Survey Corners in the
T. 2 N., R. 12 E.

CORNER CODE INDEX

	1	2	3	4	5	6	7	8	9	10	11	12	13	14	15	16	17	18	19	20	21	22	23	24	25
A																									
B																									
C																									
D																									
E																									
F																									
G																									
H																									
I																									
J																									
K																									
L																									
M																									
N																									
O																									
P																									
Q																									
R																									
S																									
T	30	29	28	27	26	25																			
U																									
V																									
W																									
X	31	32	33	34	35	36																			
Y																									
Z																									

PLACE MONUMENT SYMBOL (◆) AT PROPER LOCATION ON ABOVE INDEX

EXAMPLE



ROCK TWP
ROCK COUNTY WI

IF AVAILABLE
STATE PLANE COORDINATES

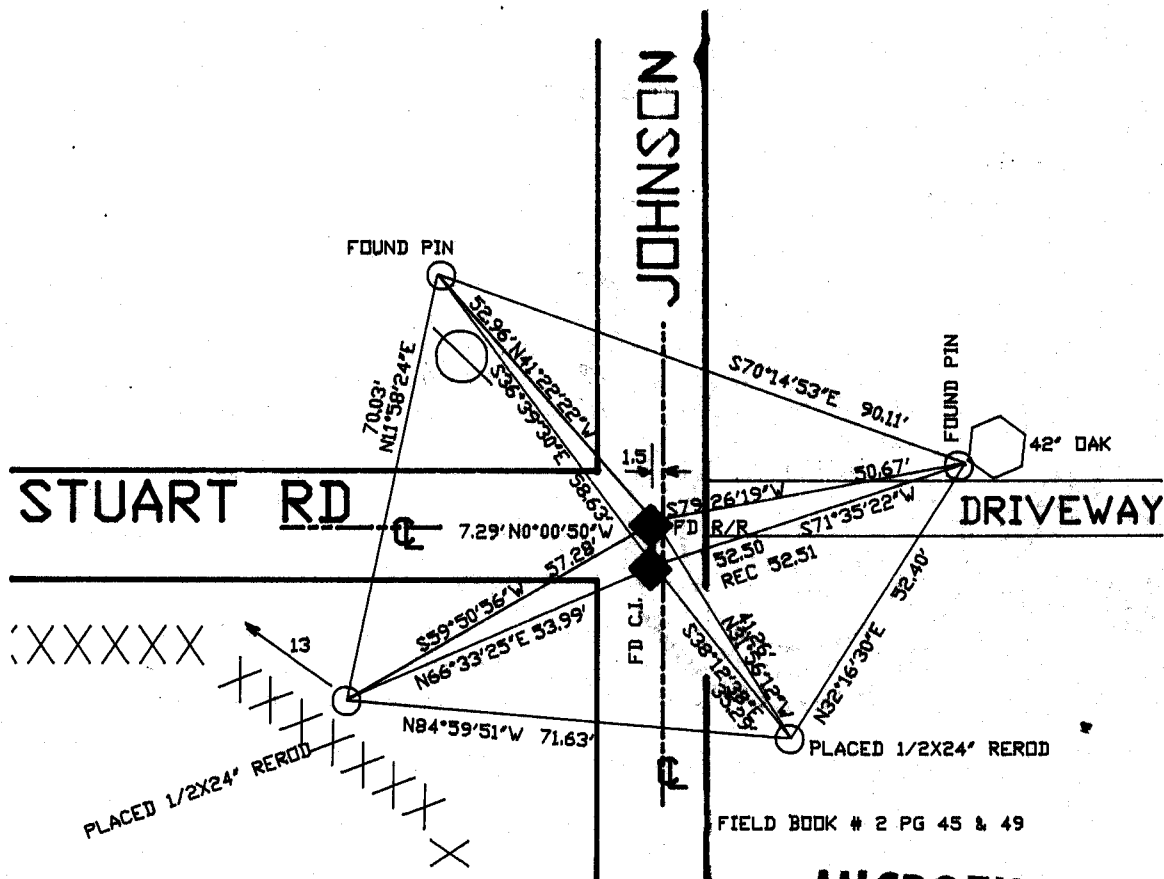
NAP 27 North (Y) 222,250.97 Eleve. (Z) _____
 East (X) 2,234,348.89 Zone _____
 Hor. Datum _____ Vert. Datum _____
 WPL 222,250.40
2,234,347.12

e.)

◆ CORNER MONUMENT

○ WITNESS MONUMENT

BEARINGS ARE BASED ON: ASSUMED



MICROFILMED

SHEET _____ OF _____

CORNER CODE: T1

(B) Describe any record evidence, monument evidence, occupational evidence, testimonial evidence or any other material evidence you considered, and whether the monument was found or placed.

1855 CHURCH VOL 1 PG 31 SHOWS 2716.56 TO CENTER OF SECTION 30.

1868 LOCKE PLYMOUTH TOWNSHIP REMONUMENTATION FIELD NOTES. SOUTH ON EAST SIDE OF SECTION 25. AT 2659.80' INTERSECTED 1/4 LINE 20.46' EAST OF CORNER. FOUND STUMPS OF B.T.S AND OLD STAKE. CORNER 1.3' EAST AND 17.49' SOUTH OF CORNER POST TO FENCE ON WEST SIDE OF LANE RUNNING NORTH. VAR CORRECTED 6-23 1/2. MEASURED 2648.91 TO SE CORNER OF SECTION 25 PLYMOUTH TOWNSHIP.

1959 BATTERMAN JR. VOL 4 PG 12 FOUND CUT STONE MONUMENT. REFERENCED SAME.

1972 LEE VOL 4 PG 577. WPL COORDINATES N/S 222,250.40;E/W 2,234,347.12

N0-20-02E 2658.64 TO NW COR SEC 30, S88-45-07E 5346.67 TO E 1/4 COR SEC 30 AND NORTH 2647.32 TO SW CORNER SECTION 30.

1981 BARNES VOL 6 PG 144. SHOWS THE FOLLOWING DISTANCE;

TO NW COR SEC 30. N1-02-37W 2658.70

LOCKE 1868 2659.80

SW COR SEC 30 N1-22-22W 2647.21

LOCKE 1868 2648.91

FOUND CAST IRON MONUMENT & R/R SPIKE.

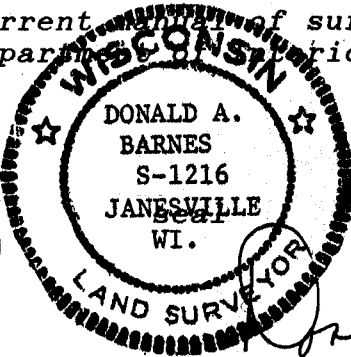
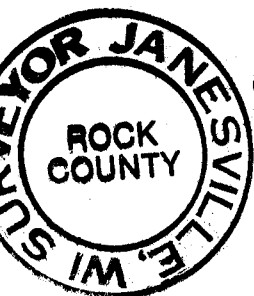
C) Was the corner restored through acceptance of (1) an obliterated evidence location, or, (2) a found perpetuated location?

ACCEPTED FOUND CAST IRON MONUMENT.

D) Describe any material discrepancy between the location of the corner as restored or reestablished and the location of that corner as previously restored or reestablished by distance and direction. Show the discrepancy on the plan view drawing under (a), above. Show the distances between the corner as previously restored or reestablished and (1) the corner as restored or reestablished, and (2) to at least 4 of the witness monuments shown on the drawing in (a), above.

(E) Was the corner reestablished through lost corner proportionate methods? If so, show the method, including the directions and distances to other public land survey corners used as evidence or used for proportioning the corner location.

I, Donald Barnes, hereby certify that the corner points as identified by the corner code index were, in a field survey on, June 23, 1989, established, re-established, monumented, re-monumented, recovered or restored as expressed below and in conformance with the regulations and rules as required in the current manual of survey instructions of the United States Department of the Interior, Bureau of Land Management.



COUNTY SURVEYOR FILING DATA

54920
1990 Date of computer entry _____

Date microfilmed _____

Number of included sheets 11
CORNER CODE

AFFIX YOUR LAND SURVEYOR SEAL