

Paper weight-110# (minimum)

Black nonfading ink required

U.S. PUBLIC LAND SURVEY MONUMENT RECORD

For Public Land Survey Corners In:
T. 4 N. R. 10 E. 4th P.M.

WI ADMINISTRATIVE CODE A-E 7.08 REQUIREMENT
REV 10/23/2004 USMONREC.DWG

CORNER CODE INDEX

UNION TWP

ROCK COUNTY WI

IF AVAILABLE
ROCK COUNTY COORDINATES PREFERRED

A	1	2	3	4	5	6	7	8	9	10	11	12	13	14	15	16	17	18	19	20	21	22	23	24	25	A
B																										B
C																										C
D																										D
E																										E
F																										F
G																										G
H																										H
J																										J
K																										K
L																										L
M																										M
N																										N
O																										O
P																										P
Q																										Q
R																										R
S																										S
T																										T
U																										U
V																										V
W																										W
X																										X
Y																										Y
Z																										Z

North _____ Elev. _____

East _____

Hor. Datum _____ Vert. Datum _____

LATITUDE _____ ELLIPS. HT. _____

LONGITUDE _____

NAD83(91) _____ NETWORK ADJ. YR 2010 _____

GPS (X) _____ TRAVERSE (X) X

BASED ON THE FOLLOWING CONTROL:

PLACE MONUMENT SYMBOL AT PROPER LOCATION ON ABOVE INDEX

CORNER MONUMENT WITNESS MONUMENT

(a) BEARINGS ARE BASED ON: ROCK COUNTY PROJECTION

FIELD BOOK _____ PAGE # _____
OR OBSERVATION SHEET _____

SHEET 1 OF 3

SHOW A PLAN VIEW DRAWING DEPICTING THE CORNER MONUMENT AND SURROUNDING PHYSICAL FEATURES, INCLUDING THE EXCAVATION AREA AND DEPTH.

PLANNING & ZONING COMMITTEE ADOPTED THIS FORM ON 12/2/1982

CORNER CODE P-1

UN574 W1/4CORSEC19

(B) Describe any record evidence, monument evidence, occupational evidence, testimonial evidence or any other material evidence you considered, and whether the monument was found or placed.

- 1833 BRINK PG 43 EAST BOUNDARY T4N R9E NORTH ON EAST SIDE OF SECTION 25
2640.00 SET 1/4 SECTION POST IN PRAIRIE AND MADE MOUND
5280.00 SET POST FOR CORNER TO SECTIONS 24 & 25 IN PRAIRIE MADE A MOUND LAND @C SAME AS LAST MILE. NOTE NEEDLE ATTRACTED 30' WEST.
- 1860 RUGER VOL 1 PG 149 SET HH 12X8X7 SURROUNDED IT BY 4 HH. USED TO SUBDIVIDE SEC 19. 2701.38 ?? OR 2899.38 TO LS 18X8X2 1/2 SURROUNDED BY 4 LS @ CENTER OF SEC 19 & 5347.98?? OR 5545.98 TO SET LIMESTONE 12X6X3 SURROUNDED BY 3 LS @ E 1/4 COR SEC 19. NOTE: COPIED FROM PG 8 BOOK RY RUGER FIELD NOTES. 1/21/1976 DAB. [1576.08 SHOWS AS 1378.08 IN FIELD BOOK. THUS FROM THE CENTER OF SEC 19 TO W 1/4 COR IS 2701.38 & NOT 2899.38. I WOULD TEND TO BELIEVE 1576.08 IS CORRECT BECAUSE OF THE RUGER'S DISTANCES ON THE NORTH & SOUTH SIDE OF THE SECTION. ALSO BIRRENKOTT CALLS FOR 1579.10 WHICH IS CLOSER TO 1576.08 THAN 1378.08.
- 1870 RUGER AUG 25 REMON-86 AUGUST 25 1870 NORTH ON WEST LINE OF SW 1/4 SEC 19 ON A VAR6-10; AT 2602.05 INTERSECTED QUARTER LINE 6.6' WEST OF QUARTER CORNER. FOUND HARD HEAD STONE AT CORNER SET BY SELF IN SURVEY. COR VAR 6-01
NORTH ON WEST LINE OF NW 1/4 SEC 19 ON A VAR 5-50; AT 2601.39 INTERSECTED NORTH BOUNDARY LINE 5.28' EAST OF CORNER. COR VAR 5-57
- 1976 BARNES VOL 5 PG 141 FD CUT STONE. & REFER. SAME. ON LINE WITH E/W FENCE ON EAST SIDE OF RD. SET 8" BERNTSEN W-1-B
- 1976 BARNES FB#1 PG 14 & 16 FD CUT STONE. 0.5' OF SAND BELOW ASPHALT SURFACE, 0.3' CUT LIMESTONE BELOW FILL SAND. 10.00 PK TIES TO NE & NW. TIES ON PG 16.
- 1976 TALARCZYK #6998 E 1/4 COR SEC 25 T4N R9E CORNER SET BY PROPORTIONATE MEASUREMENT & EXISTING PHYSICAL EVIDENCE. ON LINE WITH E/W FENCE ON WEST SIDE OF PVMT, CAST ALUM. MON. IN CTH T.
- 1994 LATHROP GSM VOL 17 PG 403 ALUM S89-57-25E 5557.67 TO ALUM @ E 1/4 COR SEC 19
- 1995 BIRRENKOTT #9211 FD BERNTSEN MON. S89-17-58E 1579.10 TO FD STONE OF RECORD & 2" IRON & 5557.94 TO BRASS CAP MON @ E 1/4 COR SEC 19

FD PK, WHICH DID NOT FIT THE 3 TIES.
USED TIES DISTANCES TO SW & NW REFERENCE PIPES AND 1994 LATHROP'S 5557.67 DISTANCE TO THE E 1/4 COR SEC 19.

BEAL
Barnes

SHEET 1 OF 3

CORNER CODE P-1

OCT 28, 2011

UN574 W1/4CORSEC19

PK IS 309,887.95; 400,291.22 AND THE COMPUTED POSITION IS 309,887.79; 400,291.18. A DIFFERENCE OF N/S 0.16' AND THE E/W DIFFERENCE IS 0.04'. THE INTERSECTION OF THE TIE DISTANCE TO THE SW & SE PIPES IS 309,888.00; 400,291.05. THIS DIFFERENCE WITH THE PK IS 0.05' N/S 0.17'. THE DISTANCE FROM THE E 1/4 COR SEC 19 TO THE PK IS 5557.62, THE COMPUTED POSITION 5557.67, LATHROP'S DISTANCE IS 5557.67', THE INTERSECTION OF THE SW & SE REFERENCE PIPES IS 5557.79, BIRRENKOTT'S 1995 DISTANCE IS 5557.94

C) Was the corner restored through acceptance of (1) an obliterated evidence location, or, (2) a found perpetuated location?

ACCEPTED PERPETUATED CUT LIMESTONE.

D) Describe any material discrepancy between the location of the corner as restored or reestablished and the location of that corner as previously restored or reestablished by distance and direction. Show the discrepancy on the plan view drawing under (a), above. Show the distances between the corner as previously restored or reestablished and (1) the corner as restored or reestablished, and (2) to at least 4 of the witness monuments shown on the drawing in (a), above.

AS SHOWN

(E) Was the corner reestablished through lost corner proportionate methods? If so, show the method, including the directions and distances to other public land survey corners used as evidence or used for proportioning the corner location.

NO

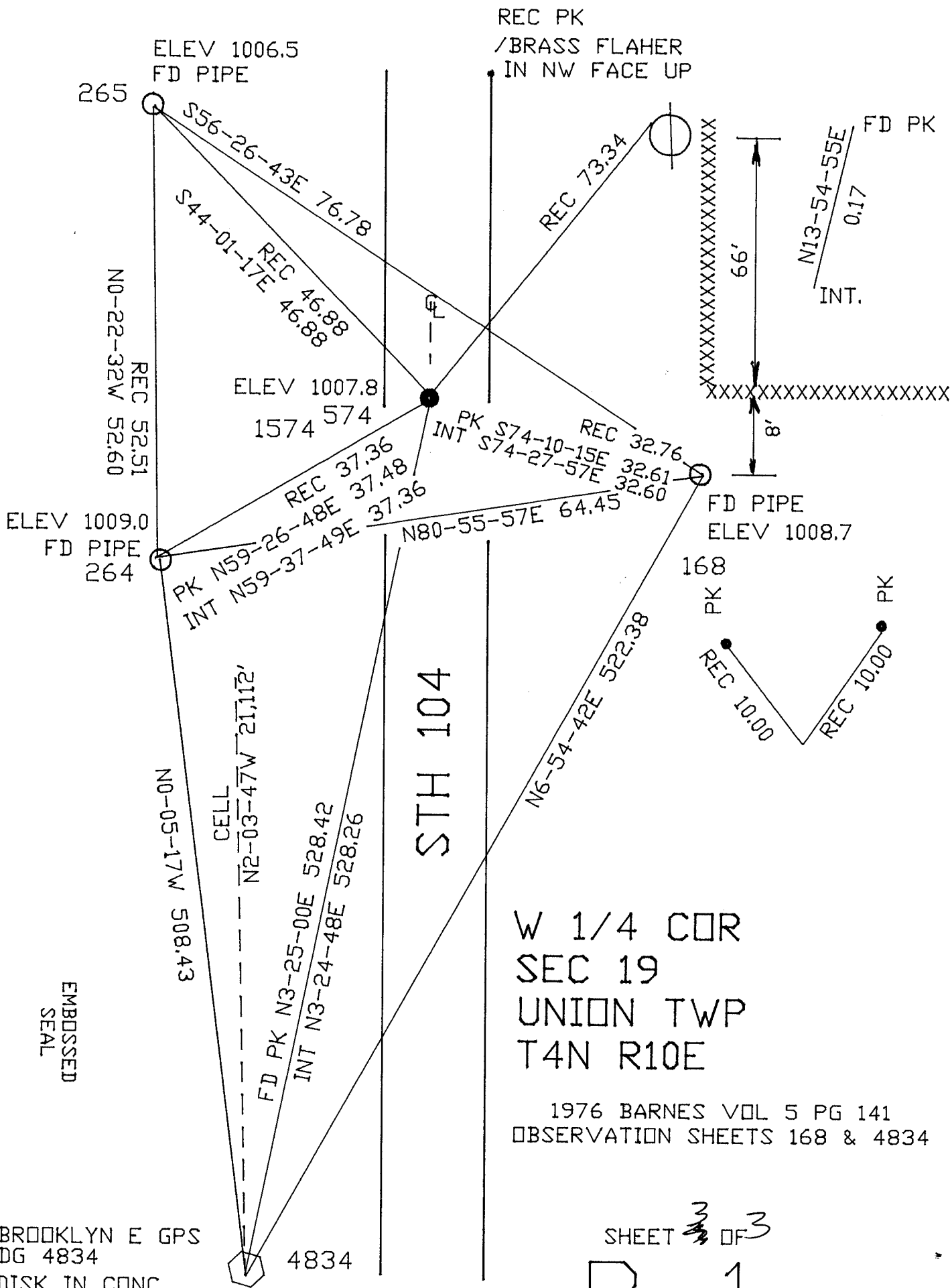
I, **Donald Barnes**, hereby certify that the corner location as identified by the corner code index was determined by me under my direction and control and that this U.S. Public Land Survey Monument Record is correct and complete to the best of my knowledge and belief.

SEAL
Donald
Barnes
OCT 28, 2011

SHEET 2 OF 3

CORNER CODE P-1

A.E. 7.08 REQUIREMENT



BROOKLYN E GPS
 DG 4834
 DISK IN CONC.
 FED NAD83(97) 309,360.48 N/S
 400,259.70' E/W
 NAVD 88 1024.6

SHEET ~~2~~³ OF 3
 P-1

Donald Barnes
 07 24, 2011