

U.S. PUBLIC LAND SURVEY MONUMENT RECORD

For Public Land Survey Corners In:

WISCONSIN ADMINISTRATIVE CODE A-E 7.08 REQUIREMENT

T. 04 N. R. 10 E. 4th P.M.

UNION TWP
ROCK COUNTY WI

CORNER CODE INDEX

A	1	2	3	4	5	6	7	8	9	10	11	12	13	14	15	16	17	18	19	20	21	22	23	24	25	A
B																										B
C																										C
D																										D
E																										E
F																										F
G																										G
H																										H
J																										J
K																										K
L																										L
M																										M
N																										N
O																										O
P																										P
Q																										Q
R																										R
S																										S
T																										T
U																										U
V																										V
W																										W
X																										X
Y																										Y
Z																										Z

IF AVAILABLE
ROCK COUNTY COORDINATES PREFERRED

North _____ Elev. _____

East _____

Hor. Datum _____ Vert. Datum _____

LATITUDE _____

LONGITUDE _____

ELLIPS. HT. _____

NAD83(91) _____ NETWORK ADJ. YR. _____

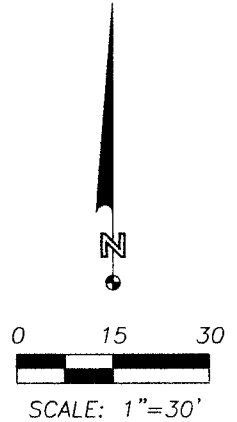
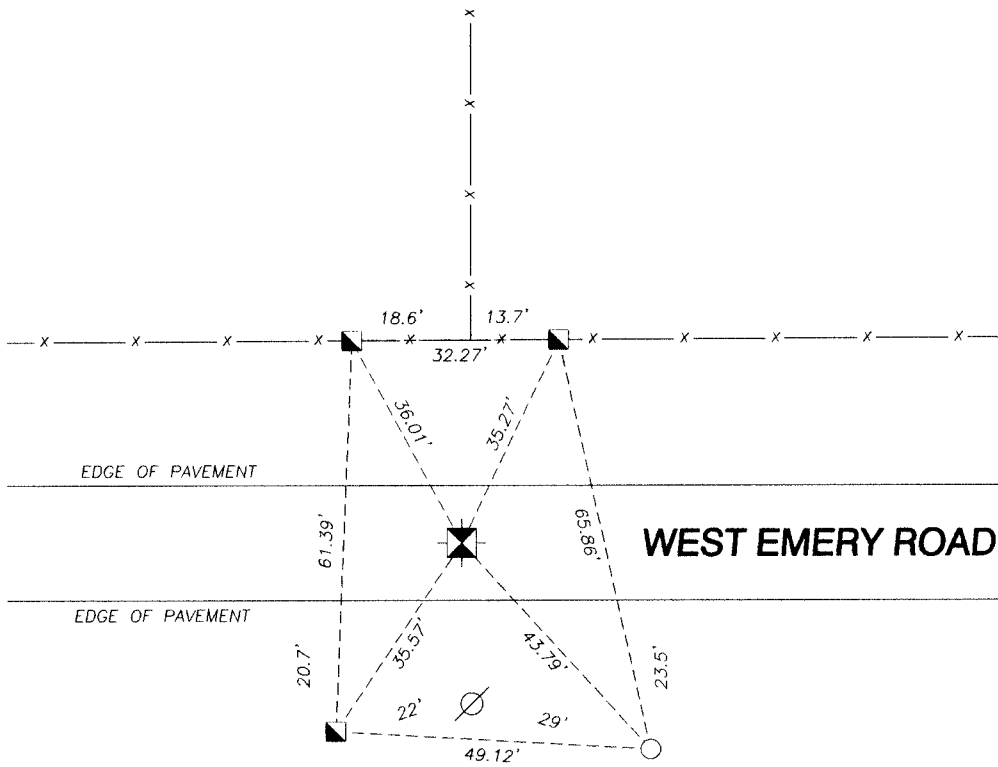
GPS (X) _____ TRAVERSE (X) _____

BASED ON THE FOLLOWING CONTROL:

PLACE MONUMENT SYMBOL AT PROPER LOCATION ON ABOVE INDEX

◆ CORNER MONUMENT ○ WITNESS MONUMENT

(A)



BEARINGS ARE BASED ON:

- LEGEND**
- 1/2" x 18" REBAR SET
 - ◆ 1-1/4" IRON PIPE FOUND
 - ◆ FOUND ALUMINUM MONUMENT
 - 2" BELOW ROAD SURFACE
 - UTILITY POLE
 - X— FENCE

**NORTH 1/4 CORNER
SECTION 19, T. 04 N., R. 10 E.**

FIELD BOOK 1 PAGE # 63

SHEET 1 OF 1

SHOW A PLAN VIEW DRAWING DEPICTING THE CORNER MONUMENT AND SURROUNDING PHYSICAL FEATURES, INCLUDING THE EXCAVATION AREA AND DEPTH.

CORNER CODE 562U

N-03

(B) Describe any record evidence, monument evidence, occupational evidence, testimonial evidence or any other material evidence you considered, and whether the monument was found or placed.

I found an aluminum monument 2 inches below the surface of West Emery Road approximately in line with an occupation fence running North, as well as 3 of the 4 witness monuments as noted on tie sheet filed by the Rock County Surveyor dated March 16, 1976.

This monument is rapidly deteriorating due to the effects of road salt.

(C) Was the corner restored through acceptance of (1) an obliterated evidence location, or, (2) a found perpetuated location?

Found perpetuated location.

(D) Describe any material discrepancy between the location of the corner as restored or reestablished and the location of that corner as previously restored or reestablished by distance and direction. Show the discrepancy on the plan view drawing under (A) above. Show the distances between the corner as previously restored or reestablished and (1) the corner as restored or reestablished, and (2) to at least 4 of the witness monuments shown on the drawing in (A), above.

I measured a distance to an aluminum monument marking the Northwest corner of Section 19, T4N, R10E which matched record distance as noted on Certified Survey Map No. 1891300, Vol. 33, Pages 323-326 prepared by Ron Combs and recorded May 7, 2010.

I accepted the monument location and set 1 additional witness monument as shown.

(E) Was the corner reestablished through lost corner proportionate methods? If so, show the method, including the directions and distance to other public land survey corners used as evidence or used for proportioning the corner location.

No.

I, Steven L. Oftedahl, hereby certify that the corner location as defined by the corner code index was determined by me under my direction and control and that this U.S. Public Land Survey Monument Record is correct and complete to the best of my knowledge and belief.

Steven L. Oftedahl 9-19-2011

SHEET 1 OF 1

CORNER CODE 562U

N-03