

U.S. PUBLIC LAND SURVEY MONUMENT RECORD

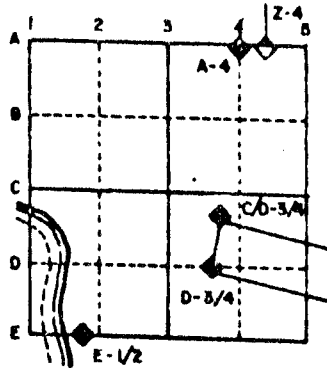
For Public Land Survey Corners in the
T. 2 N., R. 12 E.

CORNER CODE INDEX

	1	2	3	4	5	6	7	8	9	10	11	12	13	14	15	16	17	18	19	20	21	22	23	24	25
A																									
B																									
C	6																								
D		5																							
E			4																						
F				3																					
G					2																				
H																									
I	7																								
J		8																							
K			9																						
L				10																					
M					11																				
N						12																			
O							13																		
P								14																	
Q									15																
R										16															
S											17														
T												18													
U													19												
V														20											
W															21										
X																22									
Y																	23								
Z																		24							
																			25						
																				26					
																					27				
																						28			
																							29		
																								30	
																									31
																									32
																									33
																									34
																									35
																									36

PLACE MONUMENT SYMBOL (◆) AT PROPER LOCATION ON ABOVE INDEX

EXAMPLE



ROCK TWP
ROCK COUNTY WI

IF AVAILABLE STATE PLANE COORDINATES

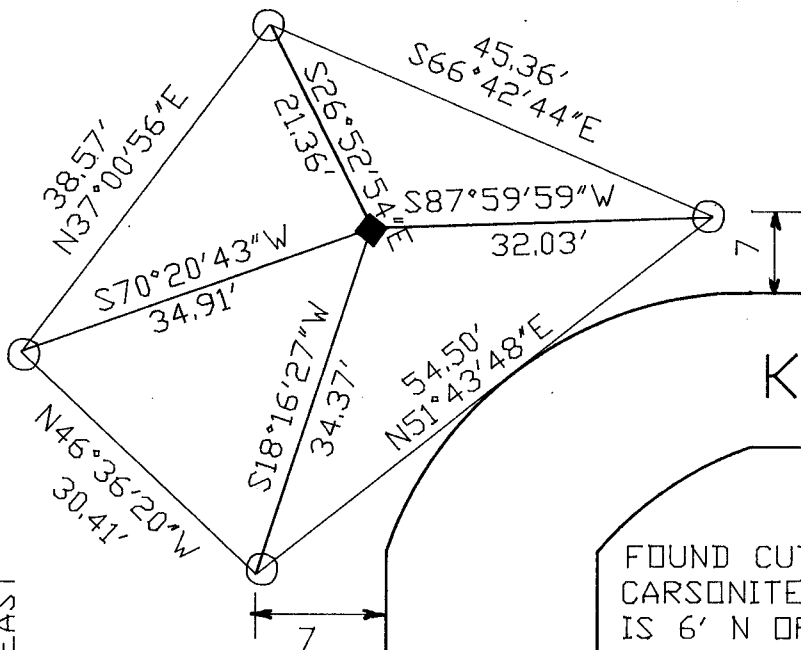
NAD
27 North (Y) 230,207.92 Eleve. (Z) _____
East (X) 2,234,164.81 Zone _____
Hor. Datum _____ Vert. Datum _____
WPL 230,207.03
2,234,164.53

◆ CORNER MONUMENT

○ WITNESS MONUMENT

BEARINGS ARE BASED ON: ASSUMED

10' NORTH OF SOUTH EDGE OF
PVMT PROJECTED FROM THE
EAST



KESSLER RD

FOUND CUT LIMESTONE WITH
CARSONITE POST. STONE
IS 6' N OF SOUTH EDGE
OF PVMT PROJECTED FROM
THE EAST.

3/4"X24 REROD WITH
ORANGE PLASTIC CAP,
ROCK FIELD BOOK #3 PG 24

SHEET ___ OF ___

CORNER CODE: N 1

(B) Describe any record evidence, monument evidence, occupational evidence, testimonial evidence or any other material evidence you considered, and whether the monument was found or placed.

1833 MULLETT ORIGINAL GOVERNMENT SURVEYOR. FIELD NOTES - SET POST CORNER SECTIONS 13 & 24 BUR OAK 8 S4W 2.00 AND BUR OAK 12 N42W 3.00.

1868 LOCKE PLYMOUTH TOWNSHIP REMONUMENTATION FIELD NOTES. NORTH ON EAST LINE OF SECTION 24. SET TEMPORARY 1/4 CORNER AT 2640'. SOUTH AT 2647.92 SET PERMANENT 1/4 CORNER 7.92' NORTH AND 3.63' WEST OF TEMPORARY 1/4 CORNER. CORNER IS ABOUT 2 RODS EAST AND 2 RODS NORTH OF CREEK. SURROUNDED MONUMENT WITH MOUND OF TUSSACKS. VAR 7-30. MEASURED FROM E 1/4 CORNER OF SEC 24 PLYMOUTH TOWNSHIP 2647.92 TO SE CORNER OF SECTION OF 24. PLACED CUT LIMESTONE. 1355.97' FROM E 1/4 CORNER OF SECTION 24 PLYMOUTH TOWNSHIP TO CENTER OF R/R TRACKS THAT ARE TO THE NORTH.

1870 RUGER VOL 2 PG 33 FOUND STONE MONUMENT SET BY LOCKE. SHOWS A DISTANCE OF 2653.20 TO E 1/4 CORNER OF SECTION 13.

1932 SUNNY VOL 3 PG 210 FOUND 6X6X40 CUT STONE MONUMENT 28" ABOVE GROUND. MARKED 13,18,19,24. RESET SAME AND SURROUNDED WITH HARDHEADS. BEARING TREES: 10" WILLOW S8W 47.3', 13" OAK S32-25W 114.4, AND 12" OAK S58W 101.8'

1959 BATTERMAN JR. VOL 4 PG 12. WPL COORDINATES N/S 230,207.03; E/W 2,234,164.53. REFERENCED SAME.

1976 TRUE VOL 5 PG 186 SHOWS 2709.16 TO S 1/4 CORNER OF SECTION 18.

1982 BARNES VOL 6 PG 282. SHOWS S89-06-43E 2660.95 TO SOUTH OF SECTION 13 PLYMOUTH TOWNSHIP AND N0-51-10W 5300.28 TO SW CORNER OF SECTION 24 PLYMOUTH TOWNSHIP.

FOUND CUT LIMESTONE WITH CARSONITE POST.

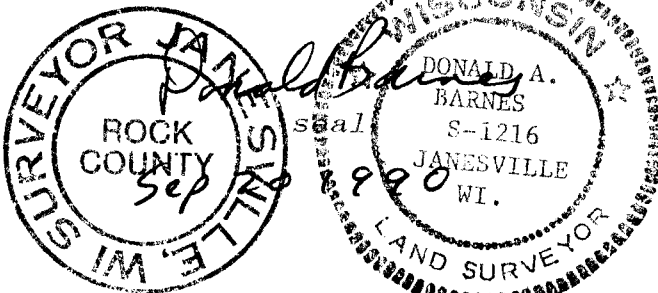
C) Was the corner restored through acceptance of (1) an obliterated evidence location, or, (2) a found perpetuated location?

ACCEPTED FOUND CUT LIMESTONE.

D) Describe any material discrepancy between the location of the corner as restored or reestablished and the location of that corner as previously restored or reestablished by distance and direction. Show the discrepancy on the plan view drawing under (a), above. Show the distances between the corner as previously restored or reestablished and (1) the corner as restored or reestablished, and (2) to at least 4 of the witness monuments shown on the drawing in (a), above.

(E) Was the corner reestablished through lost corner proportionate methods? If so, show the method, including the directions and distances to other public land survey corners used as evidence or used for proportioning the corner location.

I, Donald Barnes, hereby certify that the corner points as identified by the corner code index were, in a field survey on, August 17, 1990, established, re-established, monumented, re-monumented, recovered or restored as expressed below and in conformance with the regulations and rules as required in the current manual of survey instructions of the United States Department of Interior, Bureau of Land Management.



AFFIX YOUR LAND SURVEYOR SEAL

COUNTY SURVEYOR FILING DATA

Date of computer entry _____

Date microfilmed _____

Number of included sheets _____
CORNER CODE

N /