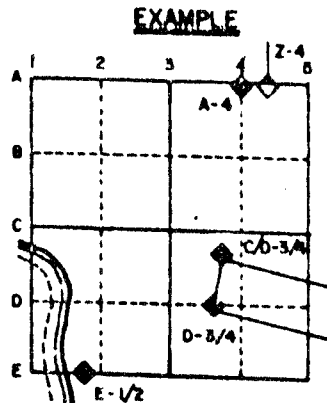


U.S. PUBLIC LAND SURVEY MONUMENT RECORD

For Public Land Survey Corners in the
T. 2 N., R. 12 E.

CORNER CODE INDEX

	1	2	3	4	5	6	7	8	9	10	11	12	13	14	15	16	17	18	19	20	21	22	23	24	25
A																									
B																									
C	6																								
D																									
E																									
F																									
G	7																								
H																									
I																									
J																									
K																									
L	8																								
M																									
N																									
O																									
P	9																								
Q																									
R																									
S																									
T	30																								
U																									
V																									
W																									
X	31																								
Y																									
Z																									



ROCK TWP
ROCK COUNTY WI

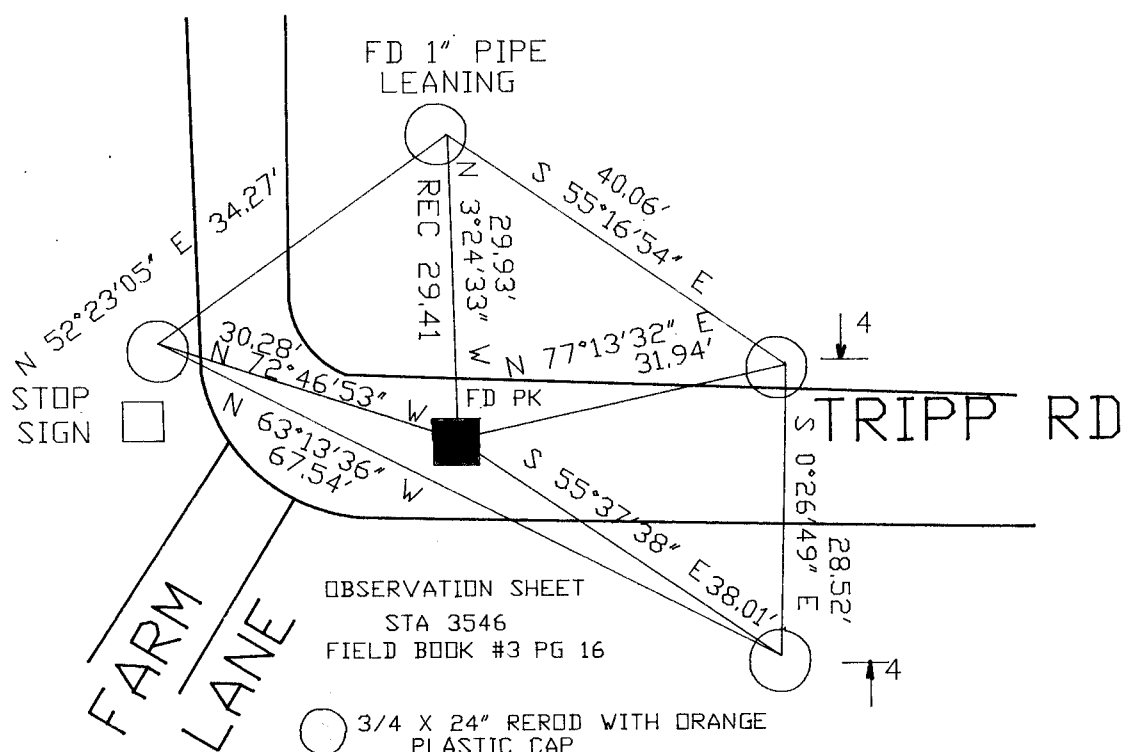
IF AVAILABLE STATE PLANE COORDINATES

NAD 27 North (Y) 232,865.63 Eleve. (Z) _____
 East (X) 2,234,106.25 Zone _____
 Hor. Datum _____ Vert. Datum _____
WPL 232,864.57
2,234,106.58

PLACE MONUMENT SYMBOL (◆) AT PROPER LOCATION ON ABOVE INDEX

◆ CORNER MONUMENT
 ○ WITNESS MONUMENT
 ALUMINUM MONUMENT

BEARINGS ARE BASED ON: TOWNSHIP PROTECT



OBSERVATION SHEET
STA 3546
FIELD BOOK #3 PG 16

○ 3/4 X 24" REROD WITH ORANGE PLASTIC CAP

SHEET ___ OF ___

CORNER CODE: L1

(B) Describe any record evidence, monument evidence, occupational evidence, testimonial evidence or any other material evidence you considered, and whether the monument was found or placed.

- 1833 MULLETT ORIGINAL GOVERNMENT SURVEYOR. FIELD NOTES - NORTH ALONG THE EAST LINE OF SECTION 13. SET QUARTER SECTION POST. BUR OAK 16 S1W 1.50 & BUR OAK 8 N28W 1.44
- 1861 RUGER VOL 1 PG 172 SHOWS A DISTANCE OF 2655.18 TO THE CENTER OF SECTION 13 PLYMOUTH TOWNSHIP.
- 1868 LOCKE PLYMOUTH TOWNSHIP REMONUMENTATION FIELD NOTES. NORTH ON EAST LINE OF SECTION 13. 2654.85' 1/4 LINE 7.59' EAST OF CORNER. FOUND SOUTH B.T. CORNER 3.3' EAST OF CORNER POST TO FENCE RUNNING WEST 2654.52' TO THE NE CORNER OF SECTION 13. PLACED CUT LIMESTONE.
- 1870 RUGER VOL 2 PG 33 SHOWS A STONE MONUMENT THAT WAS SET BY LOCKE. SHOWS A DISTANCE OF 2681.09 TO THE CENTER OF SECTION 13 PLYMOUTH TOWNSHIP.
- 1964 BATTERMAN VOL 4 PG 199 FOUND STONE MONUMENT. SHOWS WPL COORDINATES OF N/S 232,864.67; N/S 2,234,106.58
- 1974 LEE VOL 4 PG 589 DUG AND FOUND CUT STONE REFERENCED WITH TIES AND MONUMENTS. SHOWS A DISTANCE OF 2656.76 TO THE NW CORNER OF SECTION 18.
- 1976 TRUE VOL 5 PG 186 SHOWS A STATE PLANE DISTANCE AND BEARING OF S89-24-28E 2709.94 TO THE CENTER OF SECTION 18.
- 1980 BARNES VOL 6 PG 29. SHOWS N1-03-48W 2654.32 TO THE NW CORNER OF SECTION 18.
- 1982 VOL 6 PG 282 SHOWS RECORD DISTANCE AS PREVIOUSLY STATED.

FOUND PK THAT WAS IN HARMONY WITH REFERENCE MONUMENT AND RECORD DISTANCES. **PLACED ALUMINUM MONUMENT**

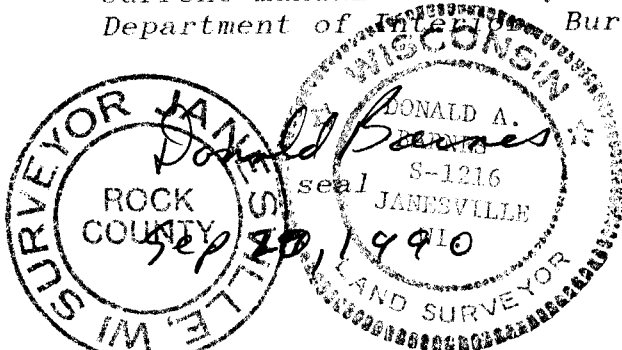
C) Was the corner restored through acceptance of (1) an obliterated evidence location, or, (2) a found perpetuated location?

ACCEPTED FOUND MONUMENT.

D) Describe any material discrepancy between the location of the corner as restored or reestablished and the location of that corner as previously restored or reestablished by distance and direction. Show the discrepancy on the plan view drawing under (a), above. Show the distances between the corner as previously restored or reestablished and (1) the corner as restored or reestablished, and (2) to at least 4 of the witness monuments shown on the drawing in (a), above.

(E) Was the corner reestablished through lost corner proportionate methods? If so, show the method, including the directions and distances to other public land survey corners used as evidence or used for proportioning the corner location.

I, Donald Barnes, hereby certify that the corner points as identified by the corner code index were, in a field survey on, July 19, 1990, established, re-established, monumented, re-monumented, recovered or restored as expressed below and in conformance with the regulations and rules as required in the current manual of survey instructions of the United States Department of the Interior, Bureau of Land Management.



COUNTY SURVEYOR FILING DATA

Date of computer entry _____

Date microfilmed _____

Number of included sheets _____
CORNER CODE

AFFIX YOUR LAND SURVEYOR SEAL

L1