

U.S. PUBLIC LAND SURVEY MONUMENT RECORD

For Public Land Survey Corners In:

WI ADMINISTRATIVE CODE A-E 7.08 REQUIREMENT

T. 1 N. R. 10 E. 4th P.M.

REV 10/23/2004

USMONREC.DWG

CORNER CODE INDEX

1	2	3	4	5	6	7	8	9	10	11	12	13	14	15	16	17	18	19	20	21	22	23	24	25	
A																									A
B																									B
C	6																								C
D																									D
E																									E
F																									F
G	7																								G
H																									H
J																									J
K																									K
L	18																								L
M																									M
N																									N
O																									O
P	19																								P
Q																									Q
R																									R
S																									S
T	30																								T
U																									U
V																									V
W																									W
X	31																								X
Y																									Y
Z																									Z

Avon TWP

ROCK COUNTY WI

IF AVAILABLE
ROCK COUNTY COORDINATES PREFERRED

North _____ Elev. _____

East _____

Hor. Datum _____ Vert. Datum _____

LATITUDE _____ ELLIPS. HT. _____

LONGITUDE _____

NAD83(91) _____ NETWORK ADJ. YR _____

GPS (X) _____ TRAVERSE (X) _____

BASED ON THE FOLLOWING CONTROL:

PLACE MONUMENT SYMBOL AT PROPER LOCATION ON ABOVE INDEX

CORNER MONUMENT

WITNESS MONUMENT

BEARINGS ARE BASED ON: _____

FIELD BOOK _____ PAGE # _____

SHEET 1 OF 3

SHOW A PLAN VIEW DRAWING DEPICTING THE CORNER MONUMENT AND SURROUNDING PHYSICAL FEATURES, INCLUDING THE EXCAVATION AREA AND DEPTH.

PLANNING & ZONING COMMITTEE ADOPTED THIS FORM ON 12/2/1982

CORNER CODE E-7

AV524

(B) Describe any record evidence, monument evidence, occupational evidence, testimonial evidence or any other material evidence you considered, and whether the monument was found or placed.

1834 HARRISON JAN EAST ON RAMD BET 4 & 9
99 ENTER S AREA OF MARSH
792 LEFT SAME CRS N
2640.00 TEMPY 1/4 P
5248.32 INT E BDY 33' N OF P. LAND SAME TIMBER W &
BURR O
COR. WEST
2624.16 QUARTER SEC COR {W.O. 20 N62E 42.9' W.O. 20
S88W 34.32' {W.O. 20 WO. 20} MARKED
5248.32 SEC COR
1853 MC VEAN VOL 1 PG 5 STATES NOTHING ABOUT MON. 2663.76'
TO NW COR SEC 8, 5306.40 VAR 6-0 TO N 1/4 COR SEC 5,
1874 RUGER VOL 2 PG 8 & MAP #41 FD STUMPS OF B.T.S DROVE
NEW STAKE, VAR 3-59 1328.25 TO SET SANDSTONE 18X8X3
@ N 1/16TH COR OF NE 1/4 SEC 8, VAR 3-59 2656.5 TO NE COR
SEC 8, 1320.99 VAR 5-25 TO HH 9X8X6 @ W 1/16TH COR OF
NE 1/4 SEC 8, VAR 5-25 2641.98 TO CEN SEC 8, 5305.74 VAR
5-25 TO S 1/4 COR SEC 8
1992 BARNES MAP #11528 CALLS FOR BEARINGS & DISTANCES IN
SOUTH HALF OF SEC 8 AND FROM CENTER TO W 1/16TH COR
OF NE 1/4 OF SEC 8
1992 BARNES G-007 CENTER OF SEC 5

DUG & FD NOTHING. PLACED ORANGE POLY MON & CARSONITE
POST.

C) Was the corner restored through acceptance of (1) an obliterated evidence location, or, (2) a found perpetuated location?

CORNER RESTORED THROUGH ACCEPTANCE OF OBLITERATED
EVIDENCE LOCATION. THE FENCE INTERSECTION AND ROW OF
TREES TO THE WEST IS IN HARMONY WITH THE RECORD DISTANCES
AND LINE TO THE CORNERS ON THE N/S 1/4 LINE OF SEC 8.

D) Describe any material discrepancy between the location of the corner as restored or reestablished and the location of that corner as previously restored or reestablished by distance and direction. Show the discrepancy on the plan view drawing under (a), above. Show the distances between the corner as previously restored or reestablished and (1) the corner as restored or reestablished, and (2) to at least 4 of the witness monuments shown on the drawing in (a), above.

(E) Was the corner reestablished through lost corner proportionate methods? If so, show the method, including the directions and distances to other public land survey corners used as evidence or used for proportioning the corner location.

I, **Donald Barnes**, hereby certify that the corner location as identified by the corner code index was determined by me under my direction and control and that this U.S. Public Land Survey Monument Record is correct and complete to the best of my knowledge and belief.

Seal

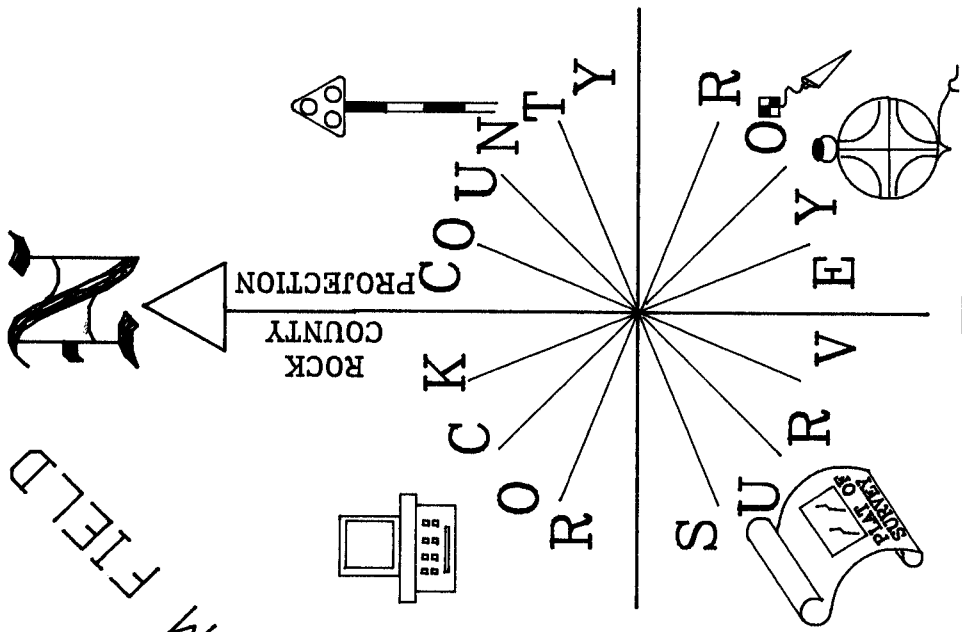
Donald Barnes
Emboss

6-06-2005

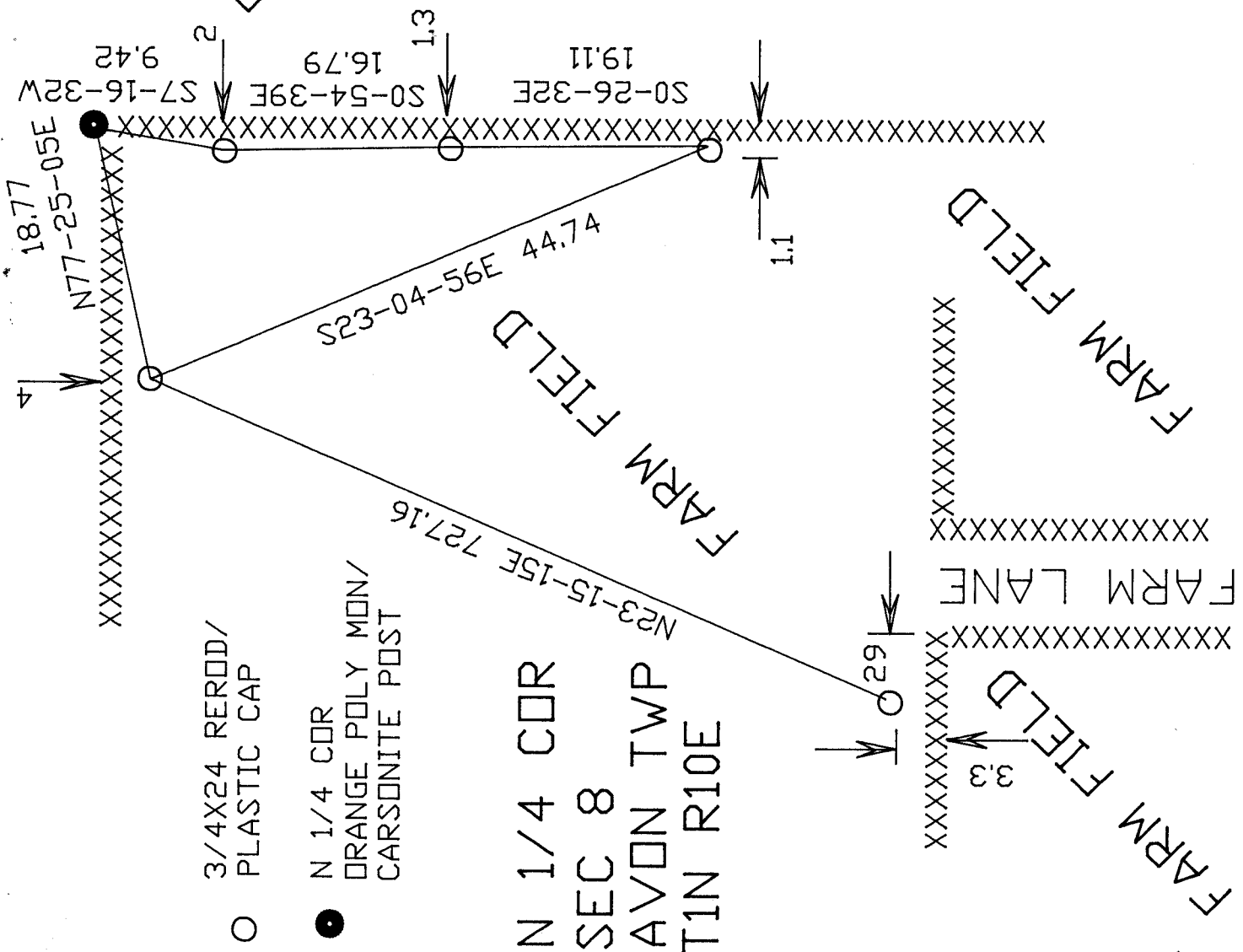
SHEET 1 OF 3

CORNER CODE **E-7**

A.E. 7.08 REQUIREMENT



ZEISS
NOT TO SCALE
OBSERVATION SHEET



- 3/4X24 REROD/
PLASTIC CAP
- N 1/4 COR
ORANGE POLY MON/
CARSONITE POST

N 1/4 COR
SEC 8
AVON TWP
T1N R10E

Donald Haines
EMBOSSSED SEAL
6-06-2005

SHEET 3 OF 3
E-7